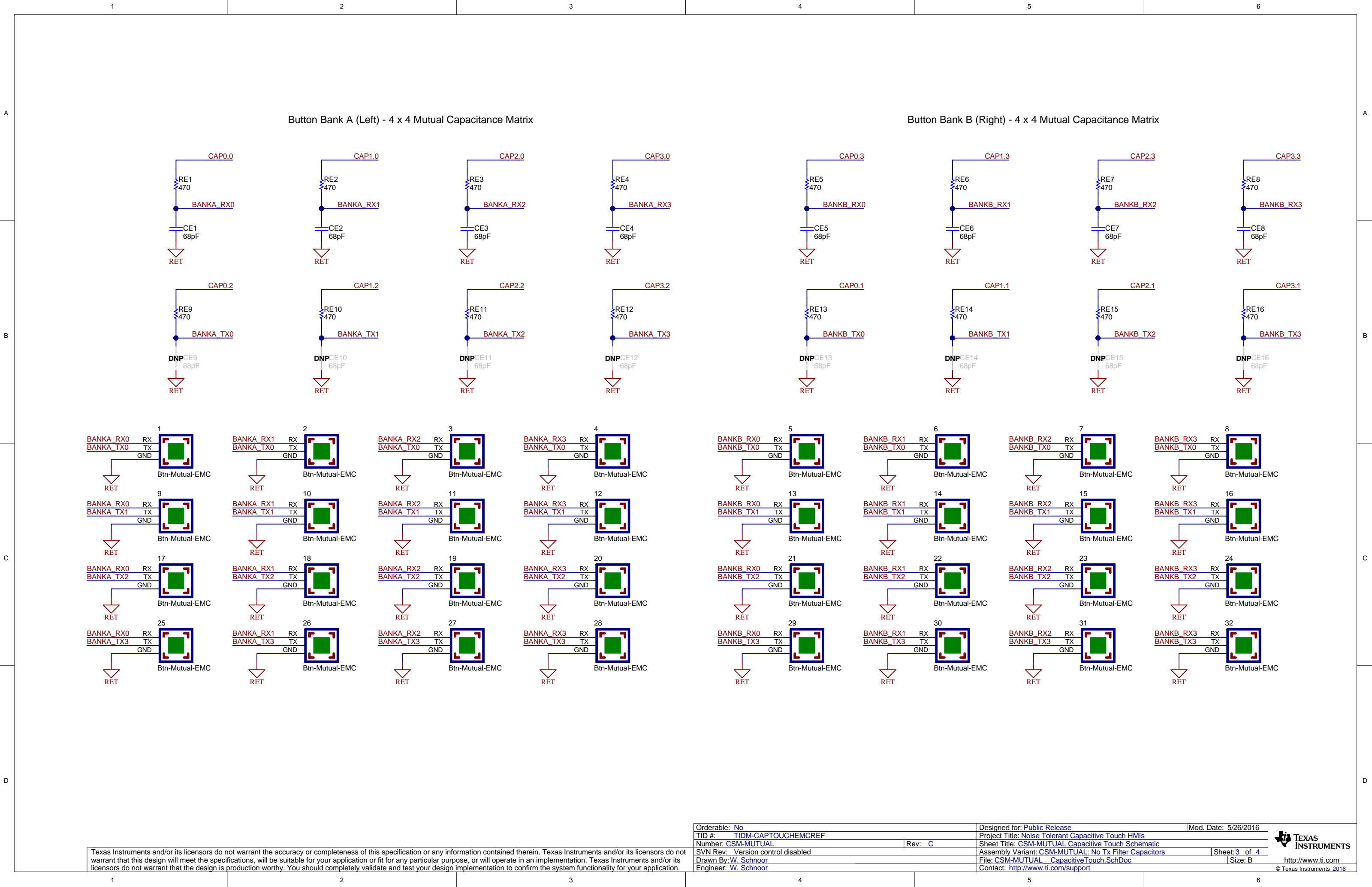
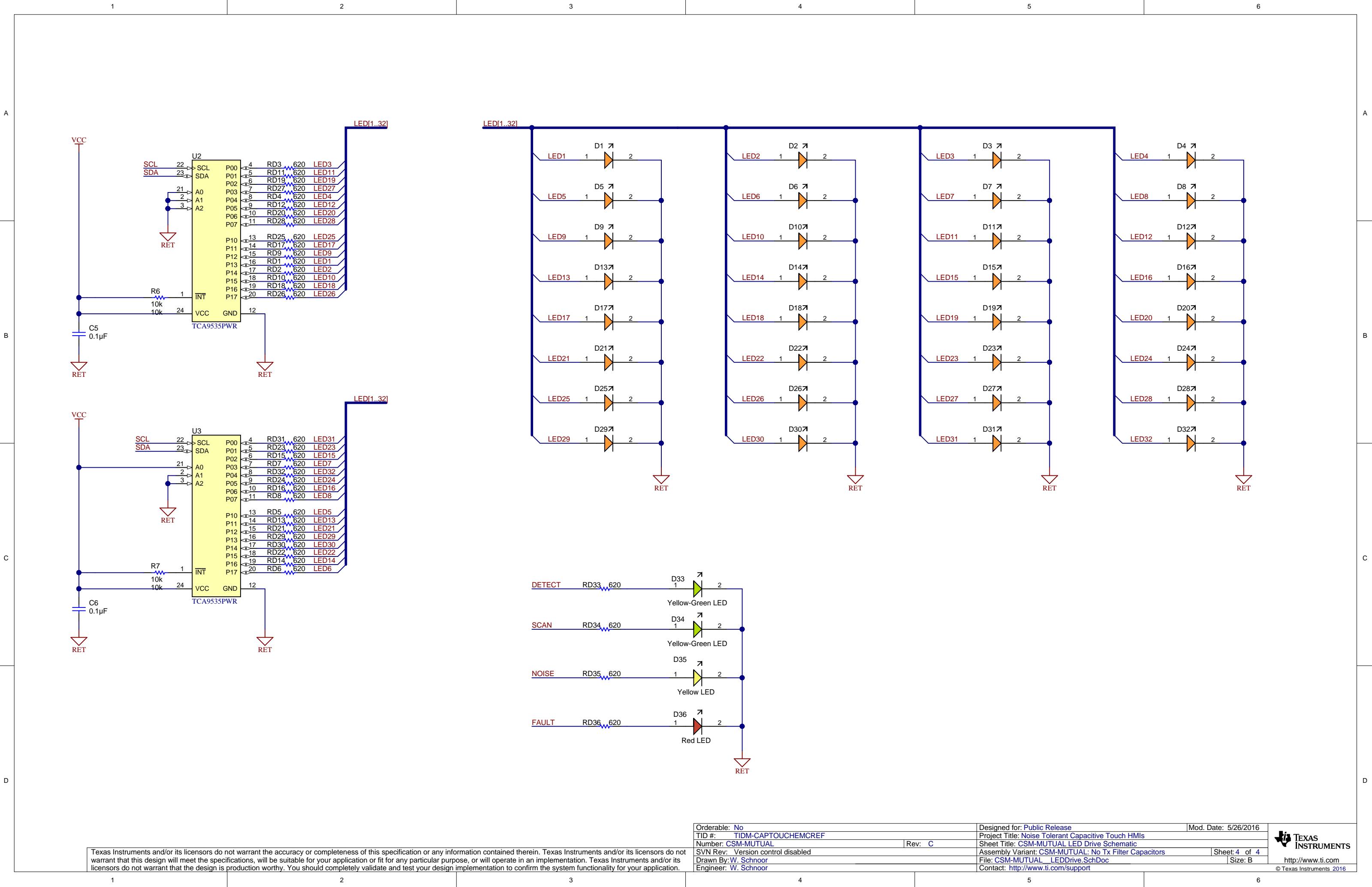


Texas Instruments and/or its licensors do not warrant the accuracy or completeness of this specification or any information contained therein. Texas Instruments and/or its licensors do not warrant that this design will meet the specifications, will be suitable for your application or fit for any particular purpose, or will operate in an implementation. Texas Instruments and/or its licensors do not warrant that the design is production worthy. You should completely validate and test your design implementation to confirm the system functionality for your application.

Orderable: No	Designed for: Public Release	Mod. Date: 5/26/2016
TID #: TIDM-CAPTOUCHEMCREF	Project Title: Noise Tolerant Capacitive Touch HMI's	
Number: CSM-MUTUAL	Rev: C	Sheet Title: CSM-MUTUAL MCU Schematic
SVN Rev: Version control disabled	Assembly Variant: CSM-MUTUAL: No Tx Filter Capacitors	Sheet: 2 of 4
Drawn By: W. Schnoor	File: CSM-MUTUAL_MCU.SchDoc	Size: B
Engineer: W. Schnoor	Contact: http://www.ti.com/support	



Texas Instruments and/or its licensors do not warrant the accuracy or completeness of this specification or any information contained therein. Texas Instruments and/or its licensors do not warrant that this design will meet the specifications, will be suitable for your application or fit for any particular purpose, or will operate in an implementation. Texas Instruments and/or its licensors do not warrant that the design is production worthy. You should completely validate and test your design implementation to confirm the system functionality for your application.



Texas Instruments and/or its licensors do not warrant the accuracy or completeness of this specification or any information contained therein. Texas Instruments and/or its licensors do not warrant that this design will meet the specifications, will be suitable for your application or fit for any particular purpose, or will operate in an implementation. Texas Instruments and/or its licensors do not warrant that the design is production worthy. You should completely validate and test your design implementation to confirm the system functionality for your application.

Orderable: No	Designed for: Public Release	Mod. Date: 5/26/2016
TID #: TIDM-CAPTOUCHEMCREF	Project Title: Noise Tolerant Capacitive Touch HMI's	
Number: CSM-MUTUAL	Rev: C	Sheet Title: CSM-MUTUAL LED Drive Schematic
SVN Rev: Version control disabled	Assembly Variant: CSM-MUTUAL: No Tx Filter Capacitors	Sheet: 4 of 4
Drawn By: W. Schnoor	File: CSM-MUTUAL_LEDDrive.SchDoc	Size: B
Engineer: W. Schnoor	Contact: http://www.ti.com/support	© Texas Instruments 2016