

## QUAD DIFFERENTIAL PECL DRIVERS

### FEATURES

- Functional Replacements for the Agere BDG1A, BPNGA and BDGLA
- Pin-Equivalent to the General-Trade 26LS31 Device
- 2.0 ns Maximum Propagation Delays
- 0.15 ns Output Skew Typical Between Pairs
- Capable of Driving 50-Ω Loads
- 5.0-V or 3.3-V Supply Operation
- TB5D1M Includes Surge Protection on Differential Outputs
- TB5D2H No Line Loading When  $V_{CC} = 0$
- Third State Output Capability
- -40C to 85C Operating Temp Range
- ESD Protection HBM > 3 kV and CDM > 2 kV
- Available in Gull-Wing SOIC (JEDEC MS-013, DW) and SOIC (D) Packages

### APPLICATIONS

- Digital Data or Clock Transmission Over Balanced Transmission Lines

### DESCRIPTION

These quad differential drivers are TTL input to pseudo-ECL differential output used for digital data transmission over balanced transmission lines.

The TB5D1M device is a pin and functional replacement for the Agere systems BDG1A and BPNGA quad differential drivers. The TB5D1M has a built-in lightning protection circuit to absorb large transitions on the transmission lines without destroying the device. When the circuit is powered down it loads the transmission line, because of the protection circuit.

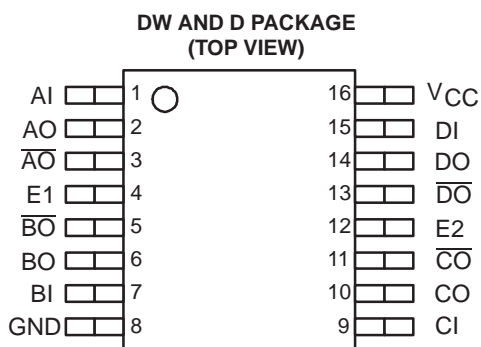
The TB5D2H device is a pin and functional replacement for the Agere systems BDG1A and BDGLA quad differential drivers. Upon power down the TB5D2H output circuit appears as an open circuit and does not load the transmission line.

Both drivers feature a 3-state output with a third-state level of less than 0.1 V.

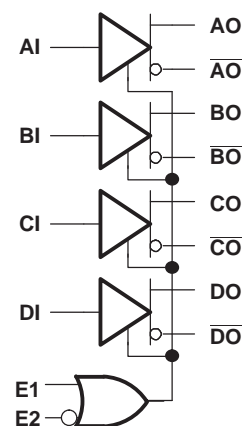
The packaging options available for these quad differential line drivers include a 16-pin SOIC gull-wing (DW) and a 16-pin SOIC (D) package.

Both drivers are characterized for operation from -40C to 85C

The logic inputs of this device include internal pull-up resistors of approximately 40 kΩ that are connected to  $V_{CC}$  to ensure a logical high level input if the inputs are open circuited.



### FUNCTIONAL DIAGRAM



**ENABLE TRUTH TABLE**

E1	E2	Condition
0	0	Active
1	0	Active
0	1	Disabled
1	1	Active



Please be aware that an important notice concerning availability, standard warranty, and use in critical applications of Texas Instruments semiconductor products and disclaimers thereto appears at the end of this data sheet.



These devices have limited built-in ESD protection. The leads should be shorted together or the device placed in conductive foam during storage or handling to prevent electrostatic damage to the MOS gates.

### ORDERING INFORMATION

PART NUMBER	PART MARKING	PACKAGE	LEAD FINISH	STATUS
TB5D1MDW	TB5D1M	Gull-wing SOIC	NiPdAu	Production
TB5D1MD	TB5D1M	SOIC	NiPdAu	Production
TB5D2HDW	TB5D2H	Gull-wing SOIC	NiPdAu	Production
TB5D2HD	TB5D2H	SOIC	NiPdAu	Production

### PACKAGE DISSIPATION RATINGS

PACKAGE	CIRCUIT BOARD MODEL	$T_A \leq 25^\circ\text{C}$ POWER RATING	THERMAL RESISTANCE, JUNCTION-TO-AMBIENT WITH NO AIR FLOW	DERATING FACTOR <sup>(1)</sup> ABOVE $T_A = 25^\circ\text{C}$	$T_A = 85^\circ\text{C}$ POWER RATING
D	Low-K <sup>(2)</sup>	754 mW	132.6 C/W	7.54 mW/C	301 mW
	High-K <sup>(3)</sup>	1166 mW	85.8 C/W	11.7 mW/C	466 mW
DW	Low-K <sup>(2)</sup>	816 mW	122.5 C/W	8.17 mW/C	326 mW
	High-K <sup>(3)</sup>	1206 mW	82.9 C/W	12.1 mW/C	482 mW

(1) This is the inverse of the junction-to-ambient thermal resistance when board-mounted with no air flow.

(2) In accordance with the low-K thermal metric definitions of EIA/JESD51-3.

(3) In accordance with the high-K thermal metric definitions of EIA/JESD51-7.

### THERMAL CHARACTERISTICS

PARAMETER		PACKAGE	VALUE	UNITS
$\theta_{JB}$	Junction-to-board thermal resistance	D	51.4	C/W
		DW	56.6	C/W
$\theta_{JC}$	Junction-to-case thermal resistance	D	45.7	C/W
		DW	49.2	C/W

### ABSOLUTE MAXIMUM RATINGS

over operating free-air temperature range unless otherwise noted<sup>(1)</sup>

			TB5D1M, TB5D2H
Supply voltage, $V_{CC}$			0 V to 6 V
Input voltage			-0.3 V to ( $V_{CC} + 0.3$ V)
ESD	Human Body Model <sup>(2)</sup>	All Pins	3 kV
	Charged-Device Model <sup>(3)</sup>	All Pins	2 kV
Continuous power dissipation			See Dissipation Rating Table
Storage temperature, $T_{stg}$			-65°C to 130°C
Junction temperature, $T_J$			130°C
Lightning surge, TB5D1M only, see <a href="#">Figure 6</a>		D Package	-80 V to 100 V
		DW Package	-100 V to 100 V

(1) Stresses beyond those listed under *absolute maximum ratings* may cause permanent damage to the device. These are stress ratings only, and functional operation of the device at these or any other conditions beyond those indicated under *recommended operating conditions* is not implied. Exposure to absolute-maximum-rated conditions for extended periods may affect device reliability.

(2) Tested in accordance with JEDEC Standard 22, Test Method A114-A.

(3) Tested in accordance with JEDEC Standard 22, Test Method C101.

**RECOMMENDED OPERATING CONDITIONS<sup>(1)</sup>**

		MIN	NOM	MAX	UNIT
Supply voltage, $V_{CC}$	5.0-V nominal supply	4.5	5	5.5	V
	3.3-V nominal supply	3.0	3.3	3.6	V
Operating free-air temperature, $T_A$		-40		85	C

(1) The algebraic convention, in which the least positive (most negative) limit is designated as minimum is used in this data sheet, unless otherwise stated.

**ELECTRICAL CHARACTERISTICS**

over recommended operating conditions unless otherwise noted

parameter	test conditions	min	typ <sup>(1)</sup>	max	unit
$I_{CC}$ Supply current	$V_{CC} = 4.5\text{ V to }5.5\text{ V}$ , no loads			40	mA
	$V_{CC} = 3.0\text{ V to }3.6\text{ V}$ , no loads			40	
$P_D$ Power dissipation	$V_{CC} = 4.5\text{ V to }5.5\text{ V}$ , <a href="#">Figure 3</a> loads all outputs		290	360	mW
	$V_{CC} = 3.0\text{ V to }3.6\text{ V}$ , <a href="#">Figure 4</a> loads all outputs		280	360	
$V_{OH}$ Output high voltage	$V_{CC} = 4.5\text{ V to }5.5\text{ V}$ , <a href="#">Figure 3</a>	$V_{CC} - 1.8$	$V_{CC} - 1.3$	$V_{CC} - 0.8$	V
$V_{OL}$ Output low voltage		$V_{OH} - 1.4$	$V_{OH} - 1.2$	$V_{OH} - 0.7$	V
$V_{OD}$ Differential output voltage $ V_{OH} - V_{OL} $		0.7	1.2	1.4	V
$V_{OH}$ Output high voltage	$V_{CC} = 3.0\text{ V to }3.6\text{ V}$ , <a href="#">Figure 4</a>	$V_{CC} - 1.8$	$V_{CC} - 1.3$	$V_{CC} - 0.8$	V
$V_{OL}$ Output low voltage		$V_{OH} - 1.4$	$V_{OH} - 1.1$	$V_{OH} - 0.5$	V
$V_{OD}$ Differential output voltage $ V_{OH} - V_{OL} $		0.5	1.1	1.4	V
$V_{OC(PP)}$ Peak-to-peak common-mode output voltage	$C_L = 5\text{ pF}$ , <a href="#">Figure 5</a>		230	600	mV
$V_{OZ}$ Third-state output voltage	<a href="#">Figure 3</a> or <a href="#">Figure 4</a> load			0.1	V
$V_{IL}$ Low level input voltage <sup>(2)</sup>				0.8	V
$V_{IH}$ High level input voltage		2			V
$V_{IK}$ Enable input clamp voltage	$V_{CC} = 4.5\text{ V}$ , $I_I = -5\text{ mA}$			-1 <sup>(3)</sup>	V
$I_{OS}$ Output short-circuit current <sup>(4)</sup>	$V_{CC} = 5.5\text{ V}$ , $V_O = 0\text{ V}$			-250 <sup>(3)</sup>	mA
	$V_{CC} = 5.5\text{ V}$ , $V_{OD} = 0\text{ V}$			10 <sup>(3)</sup>	
$I_{IL}$ Input low current, enable or data	$V_{CC} = 5.5\text{ V}$ , $V_I = 0.4\text{ V}$			-400 <sup>(3)</sup>	A
$I_{IH}$	Input high current, enable or data			20	A
	Input reverse current, enable or data			100	A
$C_{IN}$ Input capacitance			5		pF

(1) All typical values are at 25C and with a 3.3-V or 5-V supply.

(2) The input level provides no noise immunity and should be tested only in a static, noise-free environment.

(3) This parameter is listed using a magnitude and polarity/direction convention, rather than an algebraic convention, to match the original Agere data sheet.

(4) Test must be performed one output at a time to prevent damage to the device. No test circuit attached.

**THIRD STATE**—A TB5D1M (or TB5D2H) driver produces pseudo-ECL levels, and has a third-state mode, which is different than a conventional TTL device. When a TB5D1M (or TB5D2H) driver is placed in the third state, the base of the output transistors is pulled low, bringing the outputs below the active-low level of standard PECL devices. [For example: The TB5D1M low output level is typically 2.7 V, while the third state output level is less than 0.1 V.] In a bidirectional, multipoint, bus application, the driver of one device, which is in its third state, may be back driven by another driver on the bus whose voltage in the low state is lower than the third-stated device. This could come about due to differences in the driver's independent power supplies. In this case, the device in the third state controls the line, thus clamping the line and reducing the signal swing. If the difference voltage between the independent driver power supplies is small, this consideration can be ignored. Again using the TB5D1M driver as an example, a typical supply voltage difference between separate drivers of > 2 V can exist without significantly affecting the amplitude of the signal.

## SWITCHING CHARACTERISTICS, 5-V NOMINAL SUPPLY

over recommended operating conditions unless otherwise noted

parameter	test conditions	min	typ <sup>(1)</sup>	max	unit
$t_{P1}$	Propagation delay time, input high to output <sup>(2)</sup>		1.2	2	ns
$t_{P2}$	Propagation delay time, input low to output <sup>(2)</sup>		1.2	2	
$\Delta t_p$	Capacitive delay		0.01	0.03	ns/pF
$t_{PHZ}$	Propagation delay time, high-level-to-high-impedance output		7	12	ns
$t_{PLZ}$	Propagation delay time, low-level-to-high-impedance output	$C_L = 5$ pF, See <a href="#">Figure 2</a> and <a href="#">Figure 3</a>	7	12	
$t_{PZH}$	Propagation delay time, high-impedance-to-high-level output		5	12	
$t_{PZL}$	Propagation delay time, high-impedance-to-low-level output		4	12	
$t_{skew1}$	Output skew, $ t_{P1} - t_{P2} $		0.15	0.3	ns
$t_{shew2}$	Output skew, $ t_{PHH} - t_{PHL} ,  t_{PLH} - t_{PLL} $	$C_L = 5$ pF, See <a href="#">Figure 1</a> and <a href="#">Figure 3</a>	0.15	1.1	
$t_{skew(pp)}$	Part-to-part skew <sup>(3)</sup>		0.1	1	
$\Delta t_{skew}$	Output skew, difference between drivers <sup>(4)</sup>			0.3	
$t_{TLH}$	Rise time (20% - 80%)	$C_L = 5$ pF, See <a href="#">Figure 1</a> and <a href="#">Figure 3</a>	0.7	2	ns
$t_{THL}$	Fall time (80% - 20%)		0.7	2	

(1) All typical values are at 25°C and with a 5-V supply.

(2) Parameters  $t_{P1}$  and  $t_{P2}$  are measured from the 1.5 V point of the input to the crossover point of the outputs (see [Figure 1](#)).

(3)  $t_{skew(pp)}$  is the magnitude of the difference in differential propagation delay times,  $t_{P1}$  or  $t_{P2}$ , between any specified outputs of two devices when both devices operate with the same supply voltage, at the same temperature, and have identical packages and test circuits.

(4)  $\Delta t_{skew}$  is the magnitude of the difference in differential skew  $t_{skew1}$  between any specified outputs of a single device.

**SWITCHING CHARACTERISTICS, 3.3-V NOMINAL SUPPLY**

over recommended operating conditions unless otherwise noted

parameter	test conditions	min	typ <sup>(1)</sup>	max	unit
$t_{P1}$	Propagation delay time, input high to output <sup>(2)</sup>		1.2	3.5	ns
$t_{P2}$	Propagation delay time, input low to output <sup>(2)</sup>		1.2	3.5	
$\Delta t_p$	Capacitive delay		0.01	0.03	ns/pF
$t_{PHZ}$	Propagation delay time, high-level-to-high-impedance output		8	12	ns
$t_{PLZ}$	Propagation delay time, low-level-to-high-impedance output	$C_L = 5$ pF, See <a href="#">Figure 2</a> and <a href="#">Figure 4</a>	5	12	
$t_{PZH}$	Propagation delay time, high-impedance-to-high-level output		5	12	
$t_{PZL}$	Propagation delay time, high-impedance-to-low-level output		8	12	
$t_{skew1}$	Output skew, $ t_{P1} - t_{P2} $		0.15	0.3	ns
$t_{shew2}$	Output skew, $ t_{PHH} - t_{PHL} ,  t_{PLH} - t_{PLL} $	$C_L = 5$ pF, See <a href="#">Figure 1</a> and <a href="#">Figure 4</a>	0.15	1.2	
$t_{skew(pp)}$	Part-to-part skew <sup>(3)</sup>		0.1	1	
$\Delta t_{skew}$	Output skew, difference between drivers <sup>(4)</sup>			0.3	
$t_{TLH}$	Rise time (20% - 80%)	$C_L = 5$ pF, See <a href="#">Figure 1</a> and <a href="#">Figure 4</a>	0.7	2	ns
$t_{THL}$	Fall time (80% - 20%)		0.7	2	

- (1) All typical values are at 25°C and with a 3.3-V supply.
- (2) Parameters  $t_{P1}$  and  $t_{P2}$  are measured from the 1.5 V point of the input to the crossover point of the outputs (see [Figure 1](#)).
- (3)  $t_{skew(pp)}$  is the magnitude of the difference in differential propagation delay times,  $t_{P1}$  or  $t_{P2}$ , between any specified outputs of two devices when both devices operate with the same supply voltage, at the same temperature, and have identical packages and test circuits.
- (4)  $\Delta t_{skew}$  is the magnitude of the difference in differential skew  $t_{skew1}$  between any specified outputs of a single device.

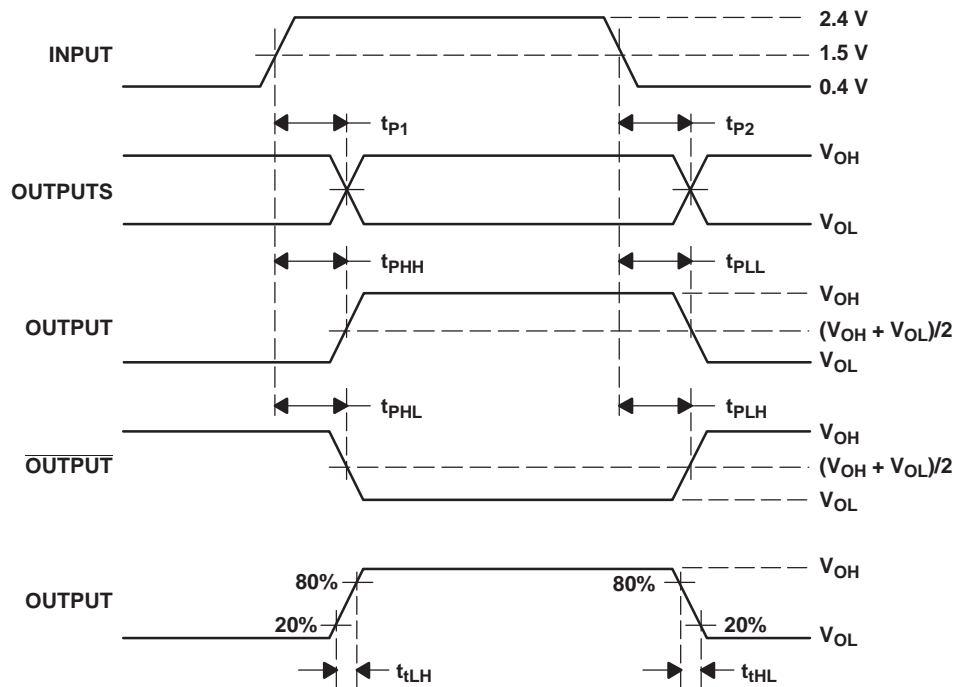
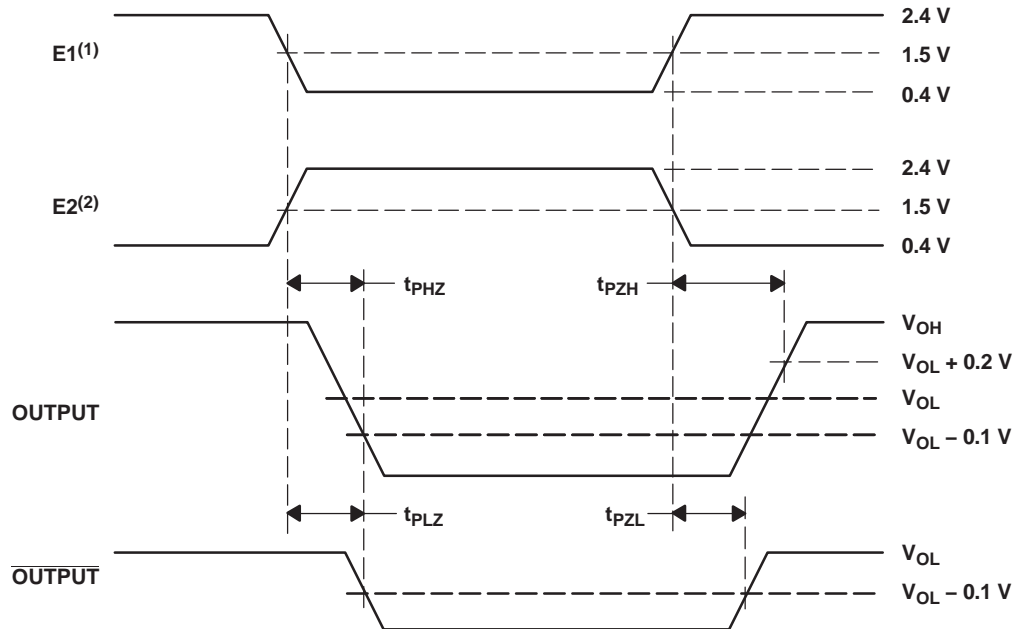


Figure 1. Propagation Delay Time Waveforms



(1) E2 = 1 while E1 changes state

(2) E1 = 0 while E2 changes state

NOTE: In the third state, both outputs (OUTPUT and  $\overline{\text{OUTPUT}}$ ) are 0.1 V (max).

Figure 2. Enable and Disable Delay Time Waveforms

## TEST CONDITIONS

Parametric values specified under the Electrical Characteristics and Switching Characteristics sections are measured with the following output load circuit.

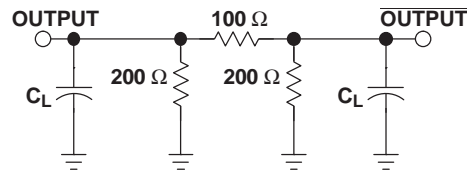


Figure 3. Driver Test Circuits, 5-V Nominal Supplies

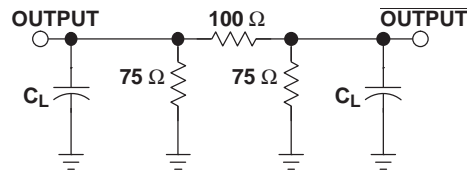
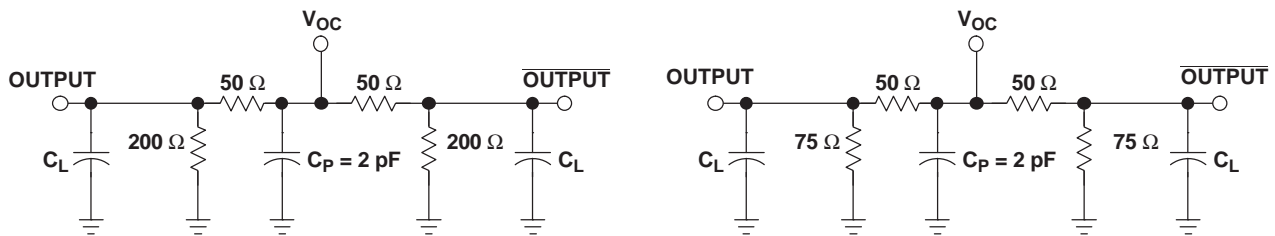
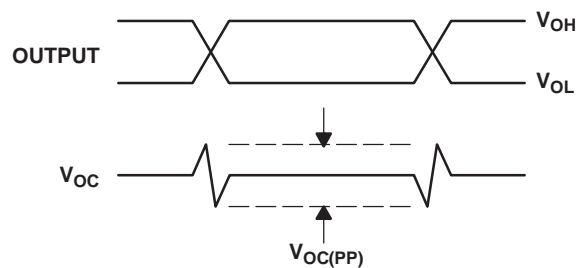


Figure 4. Driver Test Circuits, 3.3-V Nominal Supplies



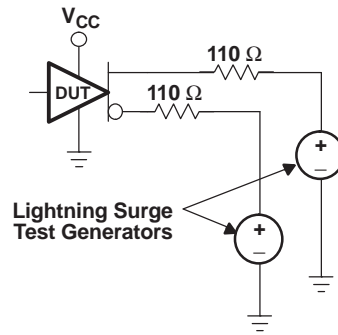
Note:  $V_{OC(PP)}$  load circuit for 5-V nominal supplies.

Note:  $V_{OC(PP)}$  load circuit for 3.3-V nominal supplies.



Note: All input pulses are supplied by a generator having the following characteristics:  $t_r$  or  $t_f = 1$  ns, pulse repetition rate (PRR) = 0.25 Mbps, pulse width =  $500 \pm 10$  ns.  $C_p$  includes the instrumentation and fixture capacitance within 0,06 m of the D.U.T. The measurement of  $V_{OC(PP)}$  is made on test equipment with a  $-3$  dB bandwidth of at least 1 GHz.

Figure 5. Test Circuits and Definitions for the Driver Common-Mode Output Voltage



Note: Surges may be applied simultaneously, but never in opposite polarities. Surge test pulses have  $t_r = t_f = 2 \mu s$ , pulse width =  $7 \mu s$  (50% points), and period = 250 ms.

Figure 6. Lightning-Surge Testing Configuration for TB5D1M

TYPICAL CHARACTERISTICS

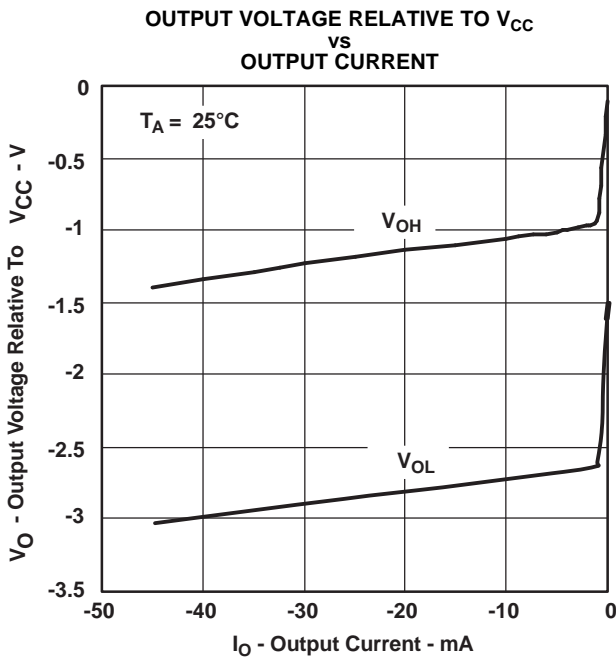


Figure 7.

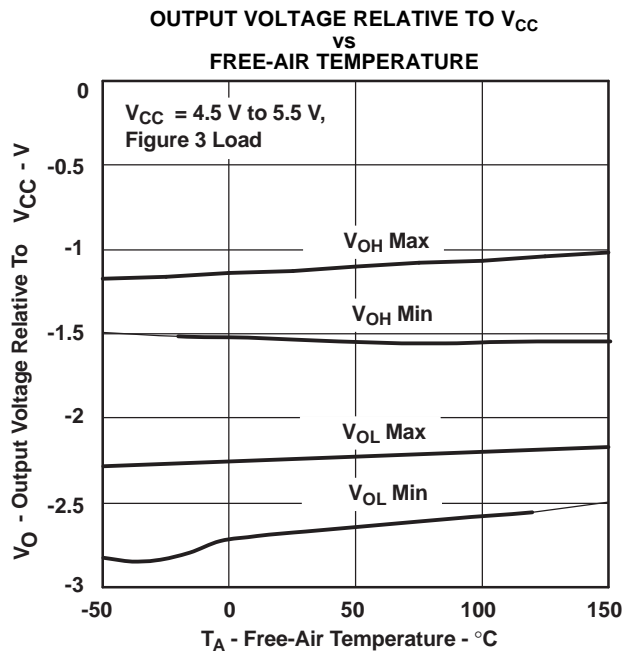


Figure 8.

**TYPICAL CHARACTERISTICS (continued)**

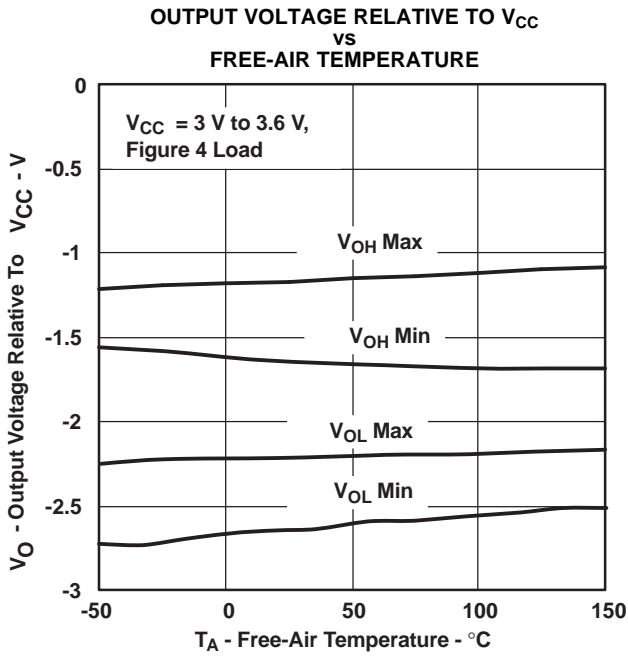


Figure 9.

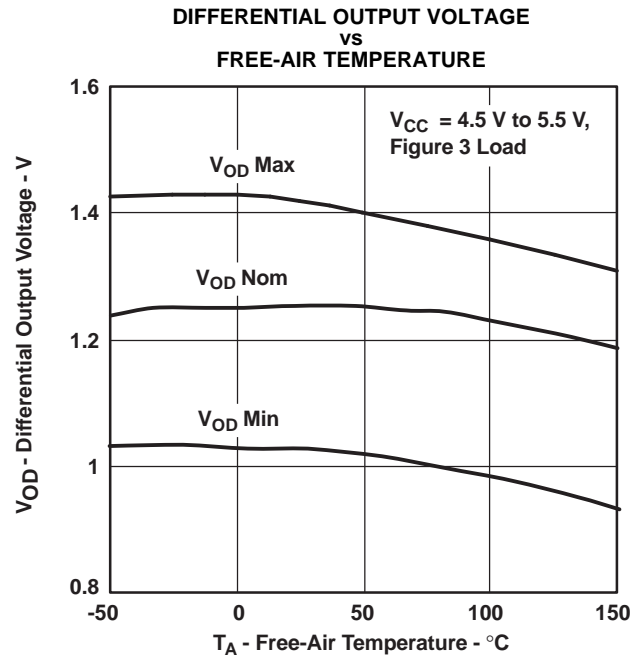


Figure 10.

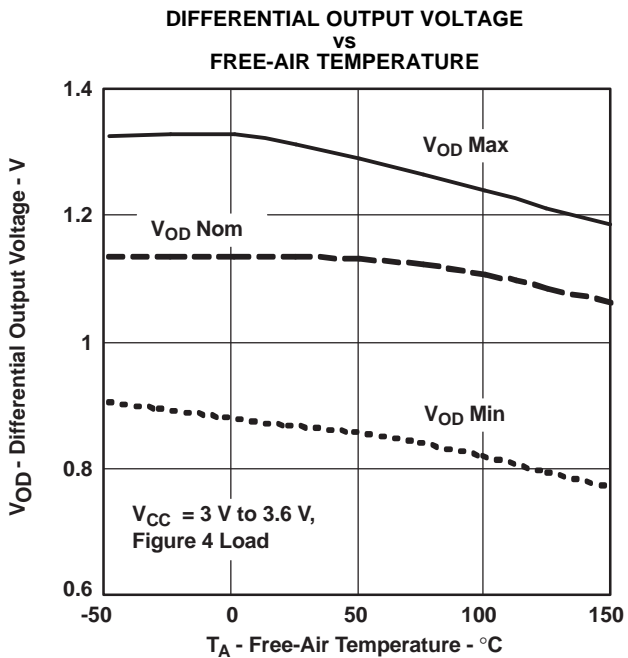


Figure 11.

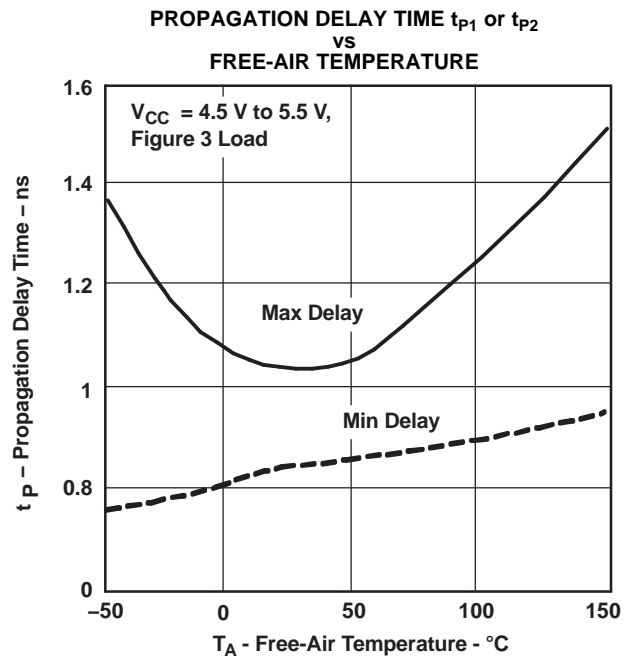
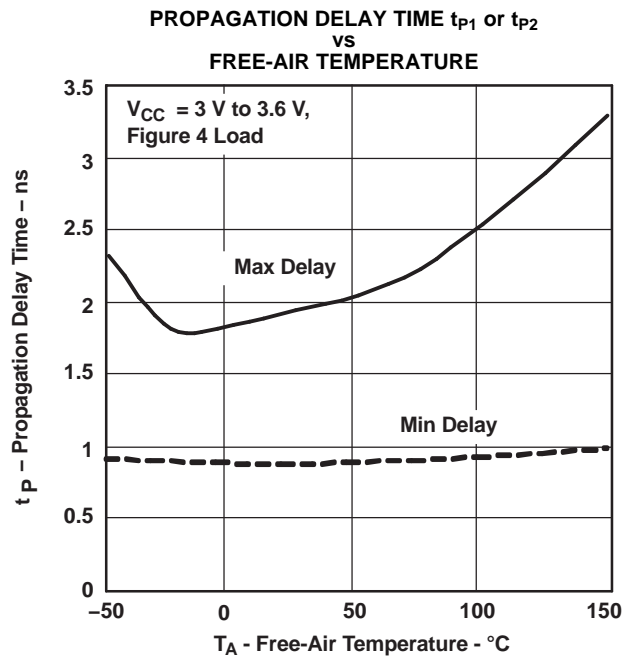


Figure 12.

**TYPICAL CHARACTERISTICS (continued)**



## APPLICATION INFORMATION

### Power Dissipation

The power dissipation rating, often listed as the package dissipation rating, is a function of the ambient temperature,  $T_A$ , and the airflow around the device. This rating correlates with the device's maximum junction temperature, sometimes listed in the absolute maximum ratings tables. The maximum junction temperature accounts for the processes and materials used to fabricate and package the device, in addition to the desired life expectancy.

There are two common approaches to estimating the internal die junction temperature,  $T_J$ . In both of these methods, the device's internal power dissipation,  $P_D$ , needs to be calculated. This is done by totaling the supply power(s) to arrive at the system power dissipation:

$$\Sigma(V_{Sn} \times I_{Sn}) \quad (1)$$

and then subtracting the total power dissipation of the external load(s):

$$\Sigma(V_{Ln} \times I_{Ln}) \quad (2)$$

The first  $T_J$  calculation uses the power dissipation and ambient temperature, along with one parameter:  $\theta_{JA}$ , the junction-to-ambient thermal resistance, in degrees Celsius per watt.

The product of  $P_D$  and  $\theta_{JA}$  is the junction temperature rise above the ambient temperature. Therefore:

$$T_J = T_A + (P_D \times \theta_{JA}) \quad (3)$$

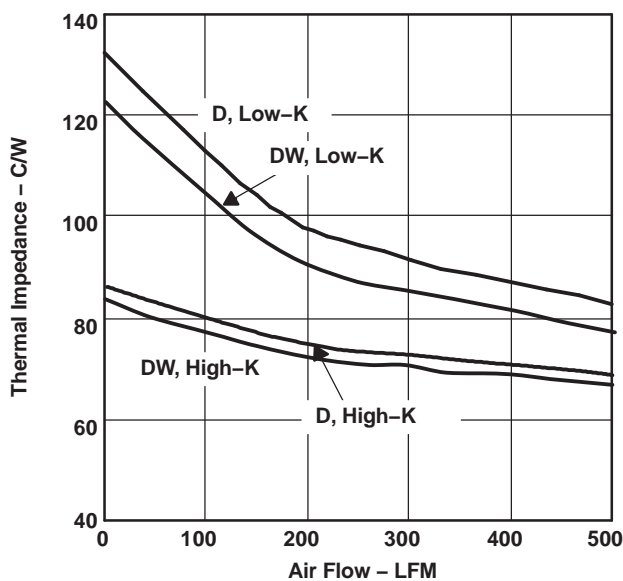


Figure 14. Thermal Impedance vs Air Flow

Note that  $\theta_{JA}$  is highly dependent on the PCB on which the device is mounted, and on the airflow over

the device and PCB. JEDEC/EIA has defined standardized test conditions for measuring  $\theta_{JA}$ . Two commonly used conditions are the low-K and the high-K boards, covered by EIA/JESD51-3 and EIA/JESD51-7 respectively. Figure 14 shows the low-K and high-K values of  $\theta_{JA}$  versus air flow for this device and its package options.

The standardized  $\theta_{JA}$  values may not accurately represent the conditions under which the device is used. This can be due to adjacent devices acting as heat sources or heat sinks, to nonuniform airflow, or to the system PCB having significantly different thermal characteristics than the standardized test PCBs. The second method of system thermal analysis is more accurate. This calculation uses the power dissipation and ambient temperature, along with two device and two system-level parameters:

- $\theta_{JC}$ , the junction-to-case thermal resistance, in degrees Celsius per watt
- $\theta_{JB}$ , the junction-to-board thermal resistance, in degrees Celsius per watt
- $\theta_{CA}$ , the case-to-ambient thermal resistance, in degrees Celsius per watt
- $\theta_{BA}$ , the board-to-ambient thermal resistance, in degrees Celsius per watt.

In this analysis, there are two parallel paths, one through the case (package) to the ambient, and another through the device to the PCB to the ambient. The system-level junction-to-ambient thermal impedance,  $\theta_{JA(S)}$ , is the equivalent parallel impedance of the two parallel paths:

$$T_J = T_A + (P_D \times \theta_{JA(S)}) \quad (4)$$

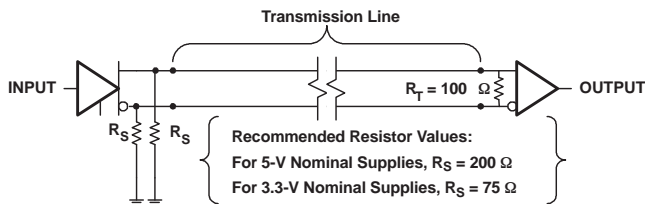
where

$$\theta_{JA(S)} = \frac{(\theta_{JC} + \theta_{CA}) \times (\theta_{JB} + \theta_{BA})}{(\theta_{JC} + \theta_{CA} + \theta_{JB} + \theta_{BA})}$$

The device parameters  $\theta_{JC}$  and  $\theta_{JB}$  account for the internal structure of the device. The system-level parameters  $\theta_{CA}$  and  $\theta_{BA}$  take into account details of the PCB construction, adjacent electrical and mechanical components, and the environmental conditions including airflow. Finite element (FE), finite difference (FD), or computational fluid dynamics (CFD) programs can determine  $\theta_{CA}$  and  $\theta_{BA}$ . Details on using these programs are beyond the scope of this data sheet, but are available from the software manufacturers.

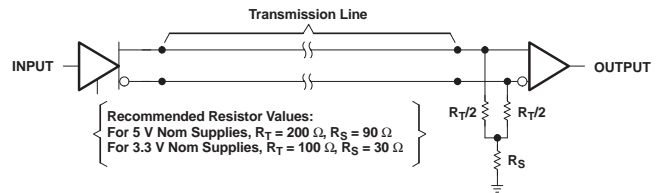
## Load Circuits

The test load circuits shown in [Figure 3](#) and [Figure 4](#) are based on a recommended *pi* type of load circuit shown in [Figure 15](#). The 100- $\Omega$  differential load resistor  $R_T$  at the receiver provide proper termination for the interconnecting transmission line, assuming it has a 100- $\Omega$  characteristic impedance. The two resistors  $R_S$  to ground at the driver end of the transmission line link provide dc current paths for the emitter follower output transistors. The two resistors to ground normally should not be placed at the receiver end, as they shunt the termination resistor, potentially creating an impedance mismatch with undesirable reflections.



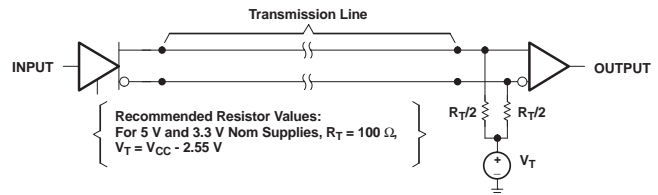
**Figure 15. A Recommended *pi* Load Circuit**

Another common load circuit, a Y load, is shown in [Figure 16](#). The receiver-end line termination of  $R_T$  is provided by the series combination of the two  $R_T/2$  resistors, while the dc current path to ground is provided by the single resistor  $R_S$ . Recommended values, as a function of the nominal supply voltage range, are indicated in the figure.



**Figure 16. A Recommended Y Load Circuit**

An additional load circuit, similar to one commonly used with ECL and PECL, is shown in [Figure 17](#).



**Figure 17. A Recommended PECL-Style Load Circuit**

An important feature of all of these recommended load circuits is that they ensure that both of the emitter follower output transistors remain active (conducting current) at all times. When deviating from these recommended values, it is important to make sure that the low-side output transistor does not turn off. Failure to do so increases the  $t_{skew2}$  and  $V_{OC(PP)}$  values, increasing the potential for electromagnetic radiation.

**PACKAGING INFORMATION**

Orderable part number	Status (1)	Material type (2)	Package   Pins	Package qty   Carrier	RoHS (3)	Lead finish/ Ball material (4)	MSL rating/ Peak reflow (5)	Op temp (°C)	Part marking (6)
<a href="#">TB5D1MD</a>	Active	Production	SOIC (D)   16	40   TUBE	Yes	NIPDAU	Level-2-250C-1YEAR/ Level-1-220C-UNLIM	-40 to 85	TB5D1M
TB5D1MD.B	Active	Production	SOIC (D)   16	40   TUBE	Yes	NIPDAU	Level-2-250C-1YEAR/ Level-1-220C-UNLIM	-40 to 85	TB5D1M
TB5D1MDE4	Active	Production	SOIC (D)   16	40   TUBE	Yes	NIPDAU	Level-2-250C-1YEAR/ Level-1-220C-UNLIM	-40 to 85	TB5D1M
<a href="#">TB5D1MDW</a>	Active	Production	SOIC (DW)   16	40   TUBE	Yes	NIPDAU	Level-2-250C-1YEAR/ Level-1-220C-UNLIM	-40 to 85	TB5D1M
TB5D1MDW.B	Active	Production	SOIC (DW)   16	40   TUBE	Yes	NIPDAU	Level-2-250C-1YEAR/ Level-1-220C-UNLIM	-40 to 85	TB5D1M
<a href="#">TB5D1MDWR</a>	Active	Production	SOIC (DW)   16	2000   LARGE T&R	Yes	NIPDAU	Level-2-250C-1YEAR/ Level-1-220C-UNLIM	-40 to 85	TB5D1M
TB5D1MDWR.B	Active	Production	SOIC (DW)   16	2000   LARGE T&R	Yes	NIPDAU	Level-2-250C-1YEAR/ Level-1-220C-UNLIM	-40 to 85	TB5D1M
<a href="#">TB5D2HD</a>	Last Time Buy	Production	SOIC (D)   16	40   TUBE	Yes	NIPDAU	Level-2-250C-1YEAR/ Level-1-220C-UNLIM	-40 to 85	TB5D2H
TB5D2HD.B	Last Time Buy	Production	SOIC (D)   16	40   TUBE	Yes	NIPDAU	Level-2-250C-1YEAR/ Level-1-220C-UNLIM	-40 to 85	TB5D2H
TB5D2HD1G4	Last Time Buy	Production	SOIC (D)   16	40   TUBE	Yes	NIPDAU	Level-2-250C-1YEAR/ Level-1-220C-UNLIM	-40 to 85	TB5D2H
TB5D2HD1G4.B	Last Time Buy	Production	SOIC (D)   16	40   TUBE	Yes	NIPDAU	Level-2-250C-1YEAR/ Level-1-220C-UNLIM	-40 to 85	TB5D2H
<a href="#">TB5D2HDR</a>	Last Time Buy	Production	SOIC (D)   16	2500   LARGE T&R	Yes	NIPDAU	Level-2-250C-1YEAR/ Level-1-220C-UNLIM	-40 to 85	TB5D2H
TB5D2HDR.B	Last Time Buy	Production	SOIC (D)   16	2500   LARGE T&R	Yes	NIPDAU	Level-2-250C-1YEAR/ Level-1-220C-UNLIM	-40 to 85	TB5D2H
<a href="#">TB5D2HDW</a>	Last Time Buy	Production	SOIC (DW)   16	40   TUBE	Yes	NIPDAU	Level-2-250C-1YEAR/ Level-1-220C-UNLIM	-40 to 85	TB5D2H
TB5D2HDW.B	Last Time Buy	Production	SOIC (DW)   16	40   TUBE	Yes	NIPDAU	Level-2-250C-1YEAR/ Level-1-220C-UNLIM	-40 to 85	TB5D2H
TB5D2HDW1G4	Last Time Buy	Production	SOIC (DW)   16	40   TUBE	Yes	NIPDAU	Level-2-250C-1YEAR/ Level-1-220C-UNLIM	-40 to 85	TB5D2H

Orderable part number	Status (1)	Material type (2)	Package   Pins	Package qty   Carrier	RoHS (3)	Lead finish/ Ball material (4)	MSL rating/ Peak reflow (5)	Op temp (°C)	Part marking (6)
TB5D2HDW1G4.B	Last Time Buy	Production	SOIC (DW)   16	40   TUBE	Yes	NIPDAU	Level-2-250C-1YEAR/ Level-1-220C-UNLIM	-40 to 85	TB5D2H

(1) **Status:** For more details on status, see our [product life cycle](#).

(2) **Material type:** When designated, preproduction parts are prototypes/experimental devices, and are not yet approved or released for full production. Testing and final process, including without limitation quality assurance, reliability performance testing, and/or process qualification, may not yet be complete, and this item is subject to further changes or possible discontinuation. If available for ordering, purchases will be subject to an additional waiver at checkout, and are intended for early internal evaluation purposes only. These items are sold without warranties of any kind.

(3) **RoHS values:** Yes, No, RoHS Exempt. See the [TI RoHS Statement](#) for additional information and value definition.

(4) **Lead finish/Ball material:** Parts may have multiple material finish options. Finish options are separated by a vertical ruled line. Lead finish/Ball material values may wrap to two lines if the finish value exceeds the maximum column width.

(5) **MSL rating/Peak reflow:** The moisture sensitivity level ratings and peak solder (reflow) temperatures. In the event that a part has multiple moisture sensitivity ratings, only the lowest level per JEDEC standards is shown. Refer to the shipping label for the actual reflow temperature that will be used to mount the part to the printed circuit board.

(6) **Part marking:** There may be an additional marking, which relates to the logo, the lot trace code information, or the environmental category of the part.

Multiple part markings will be inside parentheses. Only one part marking contained in parentheses and separated by a "-" will appear on a part. If a line is indented then it is a continuation of the previous line and the two combined represent the entire part marking for that device.

**Important Information and Disclaimer:** The information provided on this page represents TI's knowledge and belief as of the date that it is provided. TI bases its knowledge and belief on information provided by third parties, and makes no representation or warranty as to the accuracy of such information. Efforts are underway to better integrate information from third parties. TI has taken and continues to take reasonable steps to provide representative and accurate information but may not have conducted destructive testing or chemical analysis on incoming materials and chemicals. TI and TI suppliers consider certain information to be proprietary, and thus CAS numbers and other limited information may not be available for release.

In no event shall TI's liability arising out of such information exceed the total purchase price of the TI part(s) at issue in this document sold by TI to Customer on an annual basis.

**TAPE AND REEL INFORMATION**

**QUADRANT ASSIGNMENTS FOR PIN 1 ORIENTATION IN TAPE**

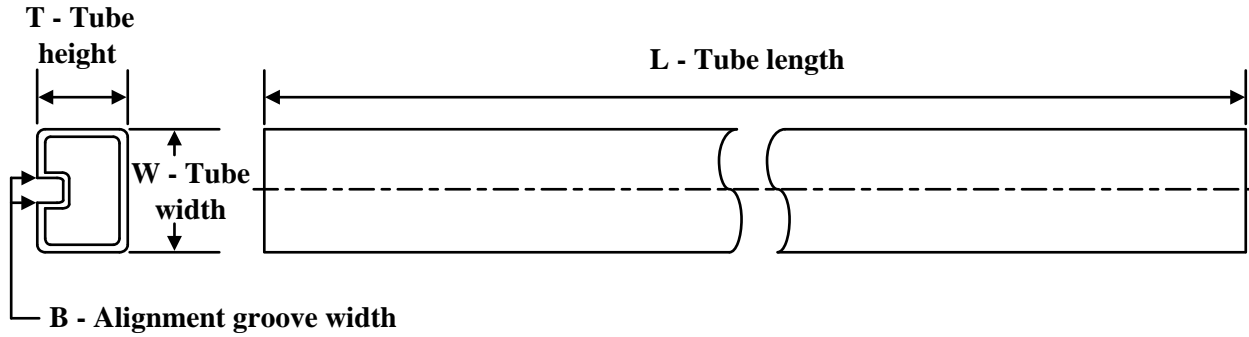

\*All dimensions are nominal

Device	Package Type	Package Drawing	Pins	SPQ	Reel Diameter (mm)	Reel Width W1 (mm)	A0 (mm)	B0 (mm)	K0 (mm)	P1 (mm)	W (mm)	Pin1 Quadrant
TB5D1MDWR	SOIC	DW	16	2000	330.0	16.4	10.75	10.7	2.7	12.0	16.0	Q1
TB5D2HDR	SOIC	D	16	2500	330.0	16.4	6.5	10.3	2.1	8.0	16.0	Q1

**TAPE AND REEL BOX DIMENSIONS**


\*All dimensions are nominal

Device	Package Type	Package Drawing	Pins	SPQ	Length (mm)	Width (mm)	Height (mm)
TB5D1MDWR	SOIC	DW	16	2000	350.0	350.0	43.0
TB5D2HDR	SOIC	D	16	2500	350.0	350.0	43.0

**TUBE**


\*All dimensions are nominal

Device	Package Name	Package Type	Pins	SPQ	L (mm)	W (mm)	T (μm)	B (mm)
TB5D1MD	D	SOIC	16	40	505.46	6.76	3810	4
TB5D1MD.B	D	SOIC	16	40	505.46	6.76	3810	4
TB5D1MDE4	D	SOIC	16	40	505.46	6.76	3810	4
TB5D1MDW	DW	SOIC	16	40	506.98	12.7	4826	6.6
TB5D1MDW.B	DW	SOIC	16	40	506.98	12.7	4826	6.6
TB5D2HD	D	SOIC	16	40	505.46	6.76	3810	4
TB5D2HD.B	D	SOIC	16	40	505.46	6.76	3810	4
TB5D2HD1G4	D	SOIC	16	40	505.46	6.76	3810	4
TB5D2HD1G4.B	D	SOIC	16	40	505.46	6.76	3810	4
TB5D2HDW	DW	SOIC	16	40	506.98	12.7	4826	6.6
TB5D2HDW.B	DW	SOIC	16	40	506.98	12.7	4826	6.6
TB5D2HDW1G4	DW	SOIC	16	40	506.98	12.7	4826	6.6
TB5D2HDW1G4.B	DW	SOIC	16	40	506.98	12.7	4826	6.6

D (R-PDSO-G16)

PLASTIC SMALL OUTLINE



- NOTES:
- A. All linear dimensions are in inches (millimeters).
  - B. This drawing is subject to change without notice.
  - C. Body length does not include mold flash, protrusions, or gate burrs. Mold flash, protrusions, or gate burrs shall not exceed 0.006 (0,15) each side.
  - D. Body width does not include interlead flash. Interlead flash shall not exceed 0.017 (0,43) each side.
  - E. Reference JEDEC MS-012 variation AC.

## GENERIC PACKAGE VIEW

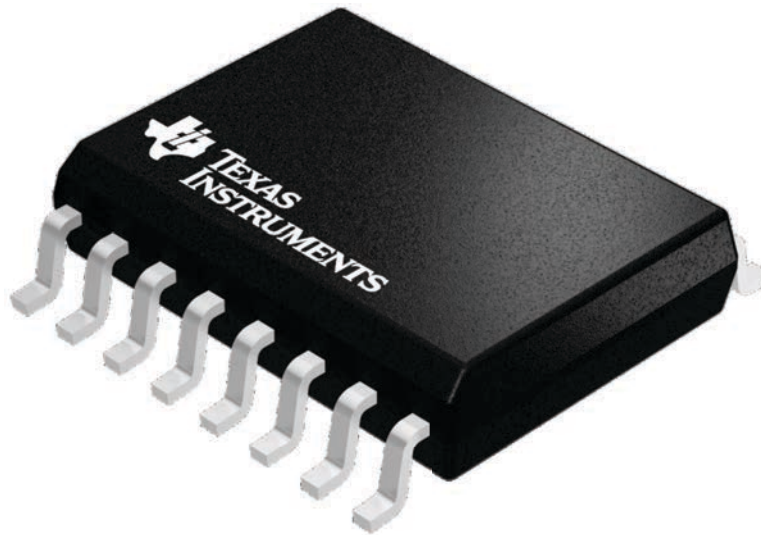
**DW 16**

**SOIC - 2.65 mm max height**

7.5 x 10.3, 1.27 mm pitch

SMALL OUTLINE INTEGRATED CIRCUIT

This image is a representation of the package family, actual package may vary.  
Refer to the product data sheet for package details.



4224780/A

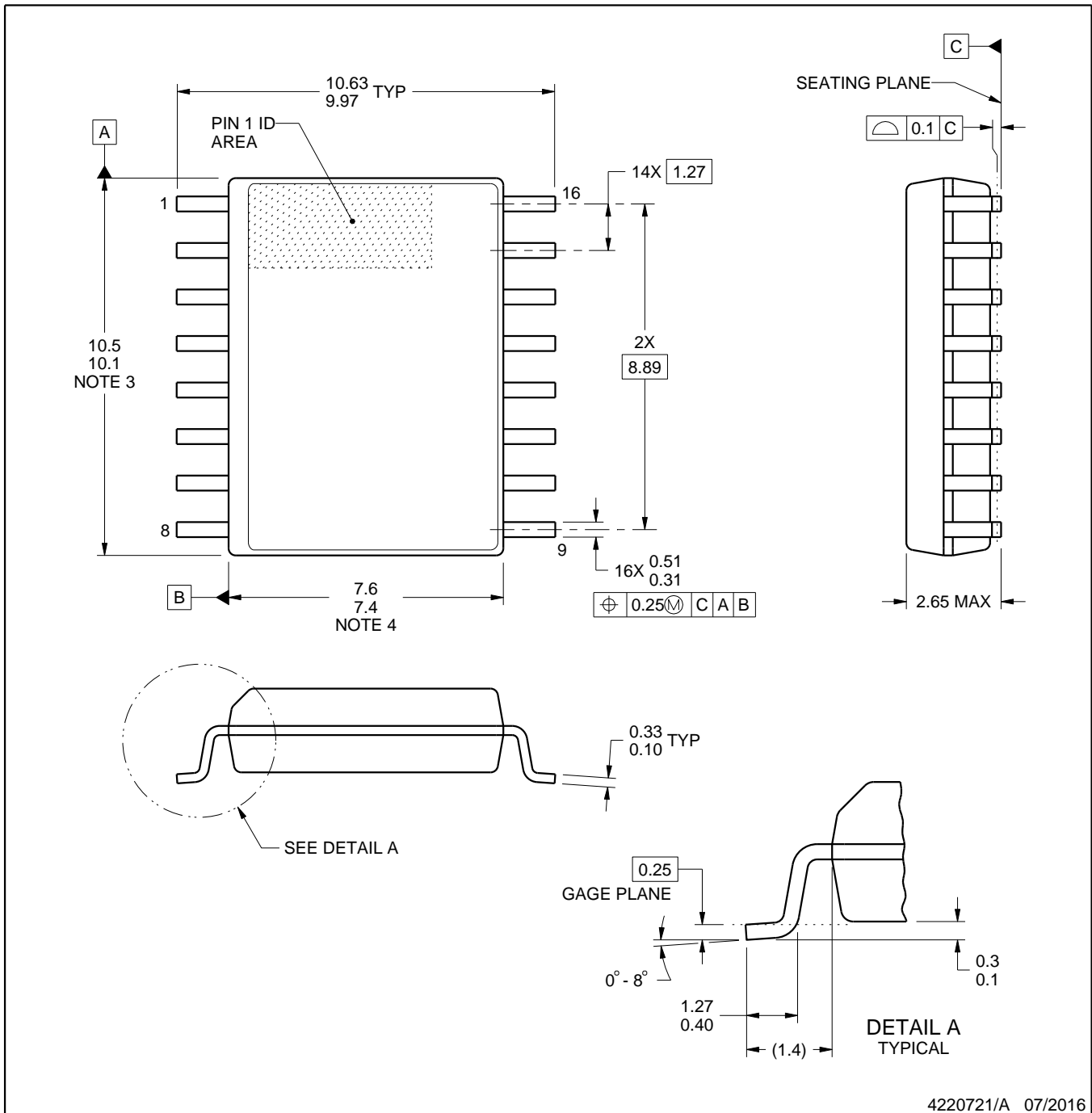


# DW0016A

# PACKAGE OUTLINE

## SOIC - 2.65 mm max height

SOIC



4220721/A 07/2016

### NOTES:

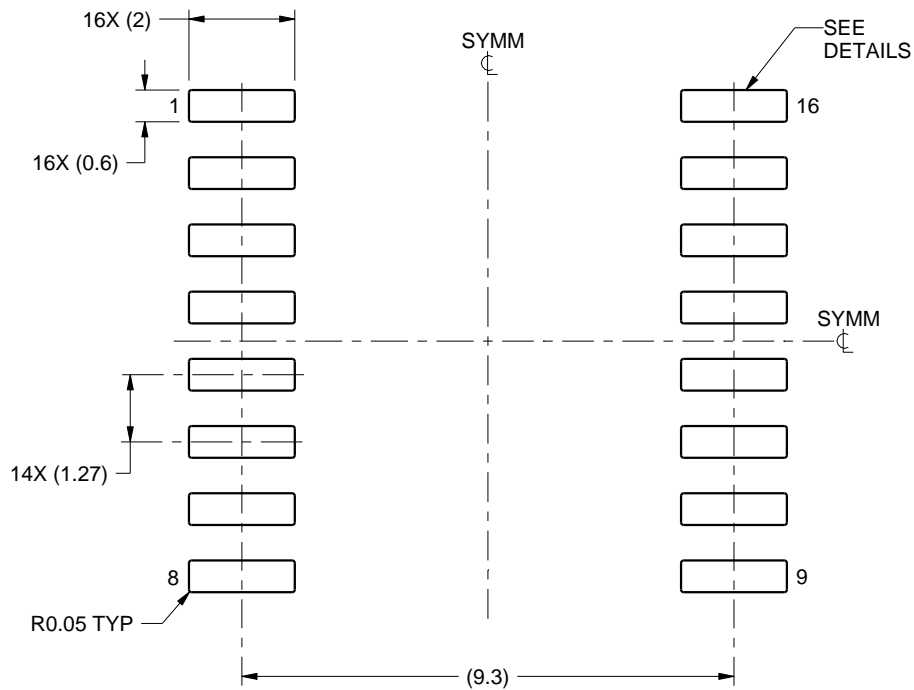
1. All linear dimensions are in millimeters. Dimensions in parenthesis are for reference only. Dimensioning and tolerancing per ASME Y14.5M.
2. This drawing is subject to change without notice.
3. This dimension does not include mold flash, protrusions, or gate burrs. Mold flash, protrusions, or gate burrs shall not exceed 0.15 mm, per side.
4. This dimension does not include interlead flash. Interlead flash shall not exceed 0.25 mm, per side.
5. Reference JEDEC registration MS-013.

# EXAMPLE BOARD LAYOUT

DW0016A

SOIC - 2.65 mm max height

SOIC



LAND PATTERN EXAMPLE  
SCALE:7X



SOLDER MASK DETAILS

4220721/A 07/2016

NOTES: (continued)

6. Publication IPC-7351 may have alternate designs.

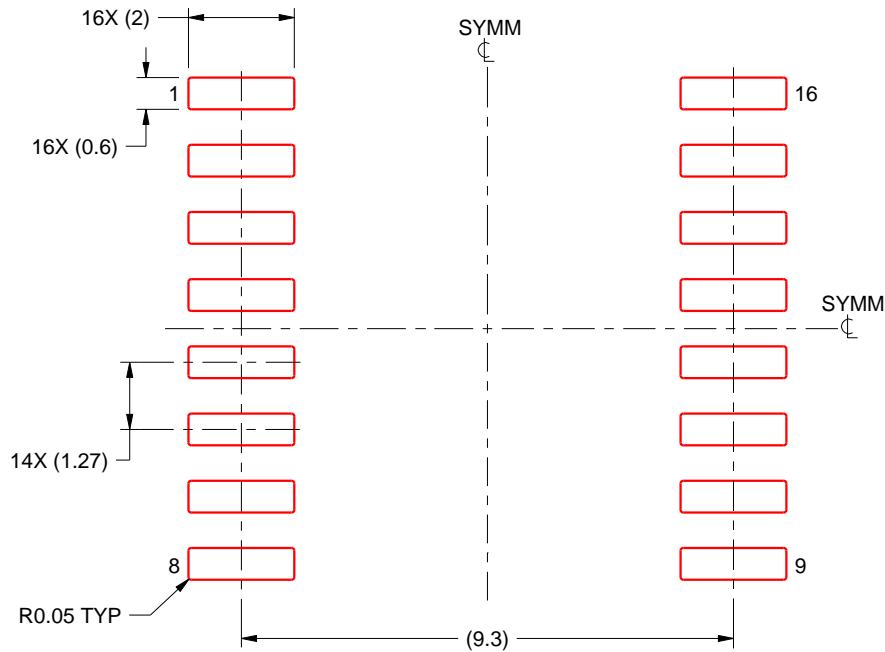
7. Solder mask tolerances between and around signal pads can vary based on board fabrication site.

# EXAMPLE STENCIL DESIGN

DW0016A

SOIC - 2.65 mm max height

SOIC



SOLDER PASTE EXAMPLE  
BASED ON 0.125 mm THICK STENCIL  
SCALE:7X

4220721/A 07/2016

NOTES: (continued)

8. Laser cutting apertures with trapezoidal walls and rounded corners may offer better paste release. IPC-7525 may have alternate design recommendations.
9. Board assembly site may have different recommendations for stencil design.

## IMPORTANT NOTICE AND DISCLAIMER

TI PROVIDES TECHNICAL AND RELIABILITY DATA (INCLUDING DATASHEETS), DESIGN RESOURCES (INCLUDING REFERENCE DESIGNS), APPLICATION OR OTHER DESIGN ADVICE, WEB TOOLS, SAFETY INFORMATION, AND OTHER RESOURCES "AS IS" AND WITH ALL FAULTS, AND DISCLAIMS ALL WARRANTIES, EXPRESS AND IMPLIED, INCLUDING WITHOUT LIMITATION ANY IMPLIED WARRANTIES OF MERCHANTABILITY, FITNESS FOR A PARTICULAR PURPOSE OR NON-INFRINGEMENT OF THIRD PARTY INTELLECTUAL PROPERTY RIGHTS.

These resources are intended for skilled developers designing with TI products. You are solely responsible for (1) selecting the appropriate TI products for your application, (2) designing, validating and testing your application, and (3) ensuring your application meets applicable standards, and any other safety, security, regulatory or other requirements.

These resources are subject to change without notice. TI grants you permission to use these resources only for development of an application that uses the TI products described in the resource. Other reproduction and display of these resources is prohibited. No license is granted to any other TI intellectual property right or to any third party intellectual property right. TI disclaims responsibility for, and you fully indemnify TI and its representatives against any claims, damages, costs, losses, and liabilities arising out of your use of these resources.

TI's products are provided subject to [TI's Terms of Sale](#), [TI's General Quality Guidelines](#), or other applicable terms available either on [ti.com](http://ti.com) or provided in conjunction with such TI products. TI's provision of these resources does not expand or otherwise alter TI's applicable warranties or warranty disclaimers for TI products. Unless TI explicitly designates a product as custom or customer-specified, TI products are standard, catalog, general purpose devices.

TI objects to and rejects any additional or different terms you may propose.

Copyright © 2026, Texas Instruments Incorporated

Last updated 10/2025