

DLP® Advanced Light Control Software Development Kit for Lightcrafter™ Evaluation Modules User's Guide

1 Introduction

This document will guide you through the build process for the DLP® Advanced Light Control (ALC) Software Development Kit (SDK) for Lightcrafter™ evaluation modules (hereto referred as DLP ALC SDK). Please note that these instructions apply to versions 2.0 and later of the DLP ALC SDK. It will also demonstrate by example how to build the source code for the related TI Designs ([TIDA-00254](#), [TIDA-00361](#), [TIDA-00362](#)) by walking through the build procedure for TIDA-00254.

The following pieces of software are required to build the DLP ALC SDK:

1. CMake v3.1: <https://cmake.org/download/>
2. Qt v5.3.2 (for the MinGW 4.8 compiler): <http://download.qt.io/archive/qt/5.3/5.3.2/>
3. OpenCV v2.4.10: <https://sourceforge.net/projects/opencvlibrary/files/opencv-win/2.4.10/>
4. Doxygen v1.8.11: <http://www.stack.nl/~dimitri/doxygen/download.html>
5. TI DLP SDK v2.0: <http://www.ti.com/tool/DLP-ALC-LIGHTCRAFTER-SDK>

Be sure to download the proper file types for your system. These downloads are large and, depending on your web connection, can take a long time. Throughout this guide we will be using a 32-bit Windows 7 system. The file names and approximate sizes in this case are:

- *cmake-3.5.0-win32-x86.msi* (15 Mb)
- *qt-opensource-windows-x86-mingw482_opengl-5.3.2.exe* (737 Mb)
- *opencv-2.1.10.exe* (367.3 Mb)
- *doxygen-1.8.11-setup.exe* (24 Mb)
- *DLPSDK-2.0-windows-installer.zip* (7kB)

2 Installing Doxygen

This section guides the user through the installation of Doxygen. Doxygen is used to help generate documentation from the source code.

1. Using the link in [Section 1](#), download the Windows binary distribution. Click on the “ftp” link highlighted in [Figure 1](#).

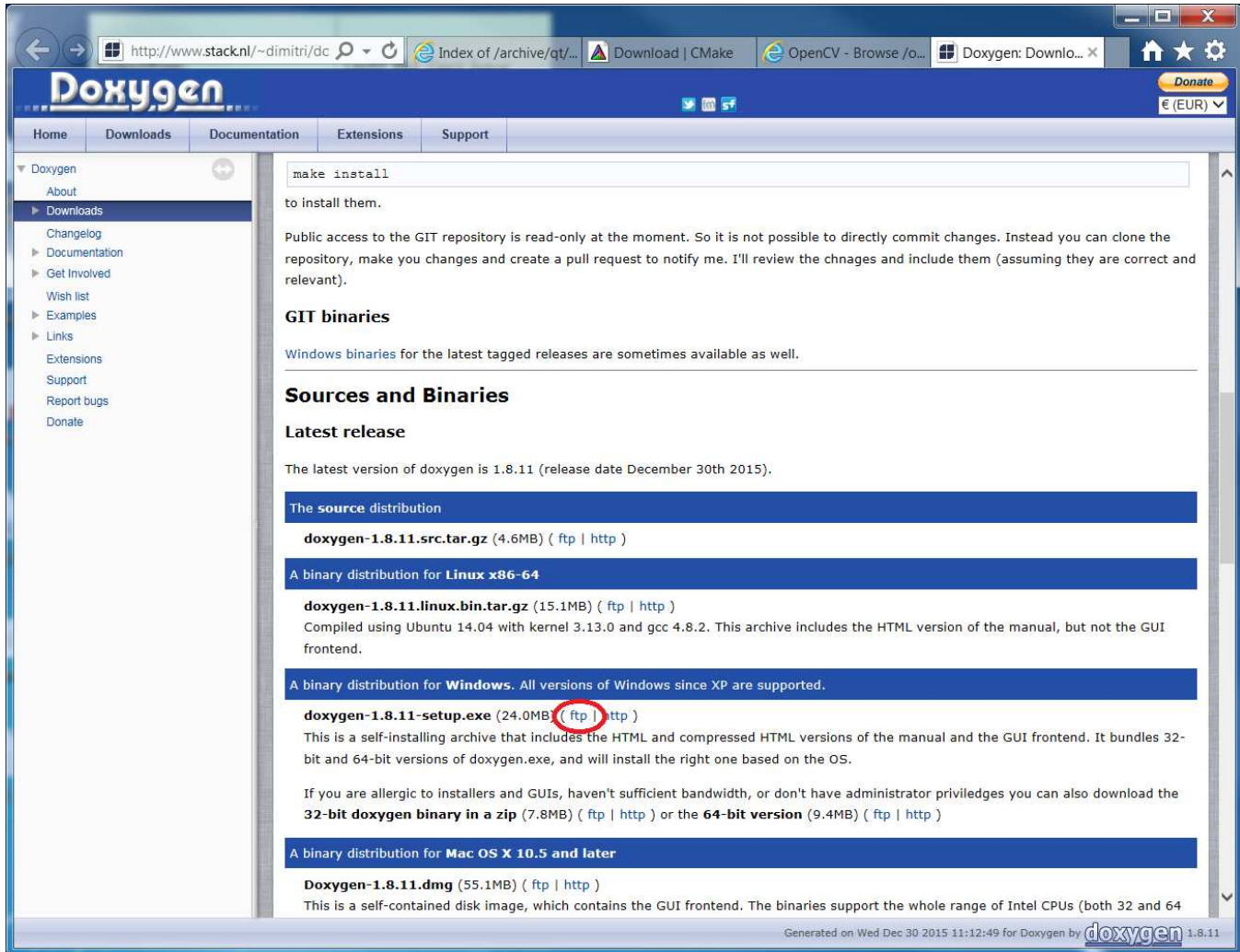


Figure 1. Doxygen Website

2. Run the downloaded file and follow the prompts through the Doxygen installer, leaving the options as their default values unless your system requires them to be changed.
3. Doxygen is now installed.

3 Installing Qt

This section guides the user through the installation of Qt ("cute"). Qt is an integrated development environment (IDE) used in a wide variety of applications. The Texas Instruments DLP ALC SDK uses the MinGW compiler bundled with Qt.

1. Download *qt-opensource-windows-x86-mingw482_opengl-5.3.2.exe* from the link given in [Section 1](#). [Figure 2](#) shows the Qt website and indicates which file to download.

Note: The DLP ALC SDK uses C++ 11 and will not compile using an out of date compiler.

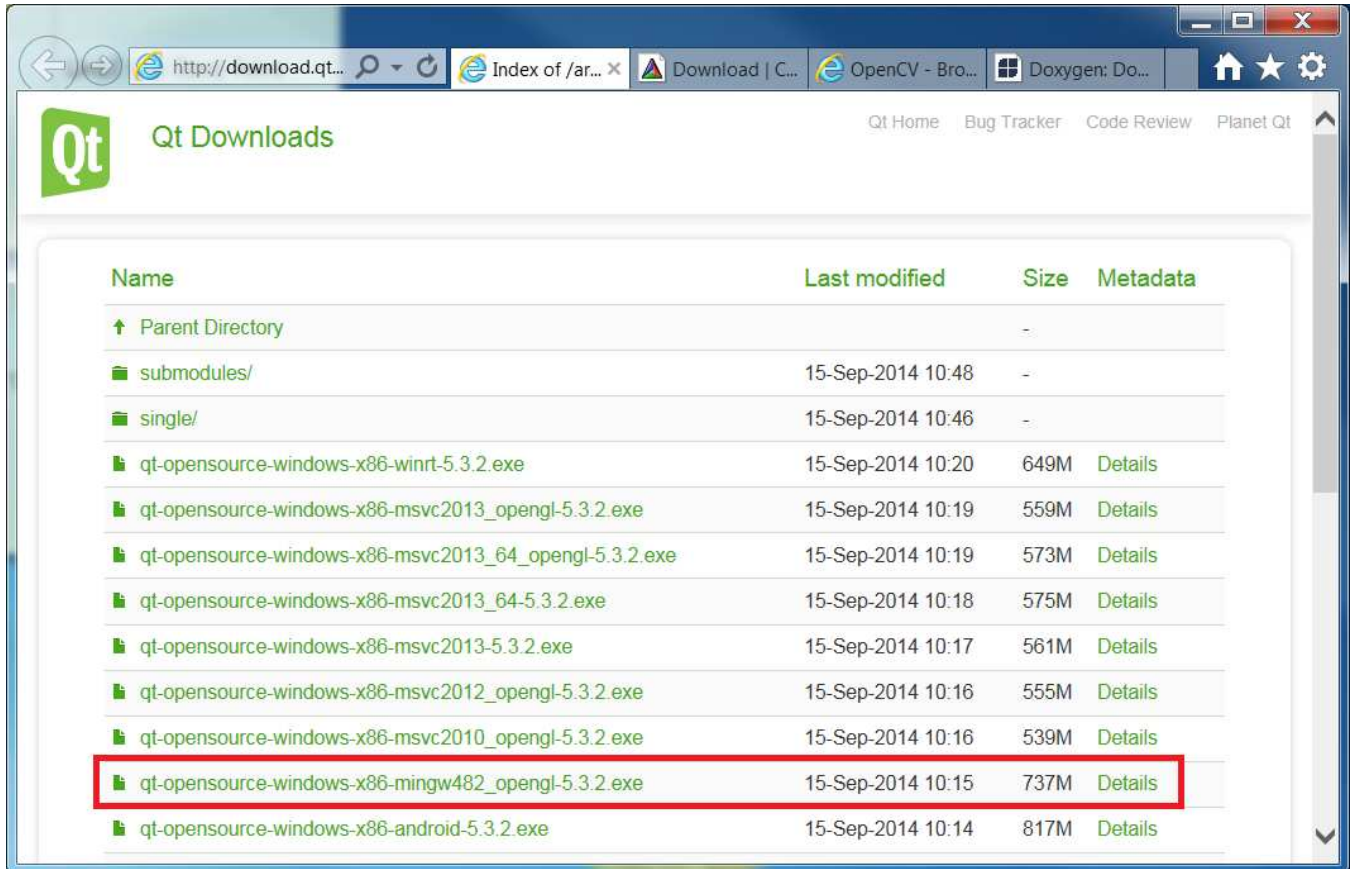


Figure 2. Qt Website

2. Run the downloaded executable file. Click the "Next" button shown in [Figure 3](#).

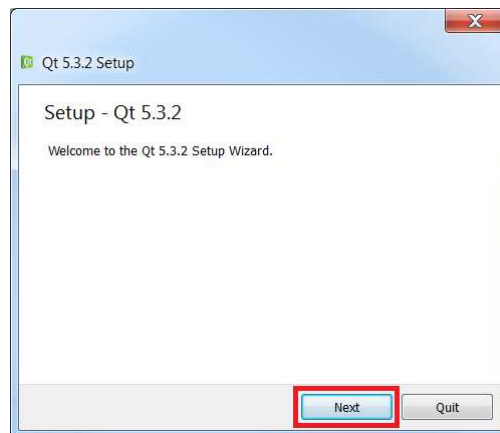


Figure 3. Qt Initial Run

3. Select an installation path as shown in [Figure 4](#) and click “Next.”

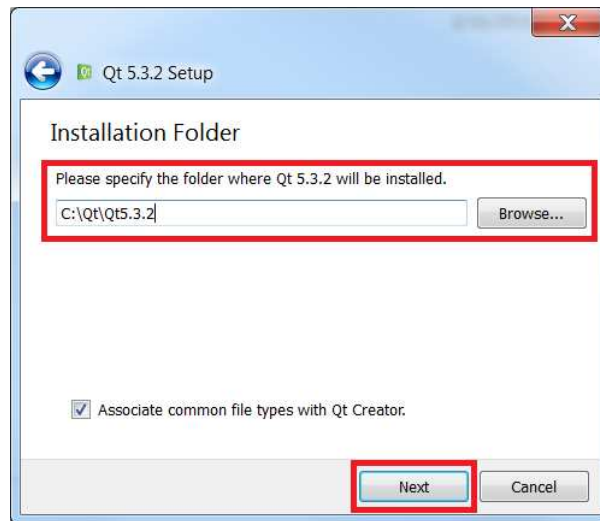


Figure 4. Qt Install Folder

4. In the “Select Components” window, expand the “Tools,” drop-down. As indicated in [Figure 5](#), check the box next to MinGW 4.8.2. Click “Next.”

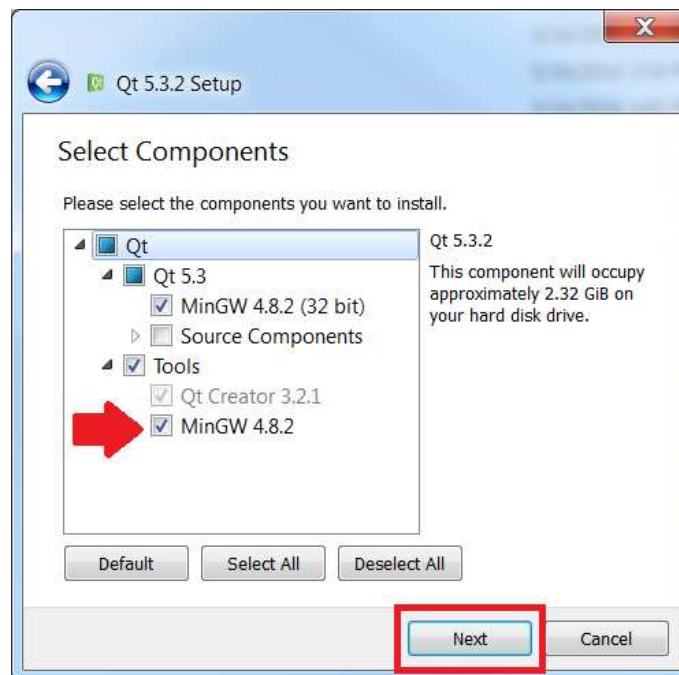


Figure 5. Install Components

- As shown in [Figure 6](#), read and accept the license agreement and click “Next.”

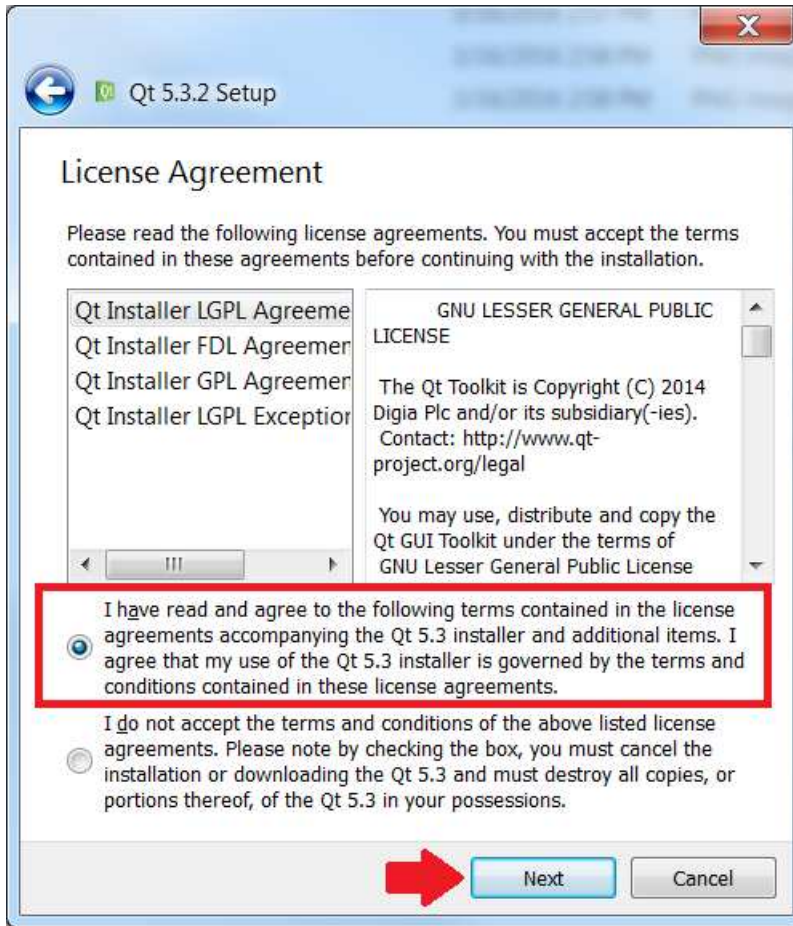


Figure 6. Qt License Agreement

6. If required by your system, select a different location in the Start Menu where you would like to create shortcuts. [Figure 7](#) shows the default value. Once completed, click “Next.”

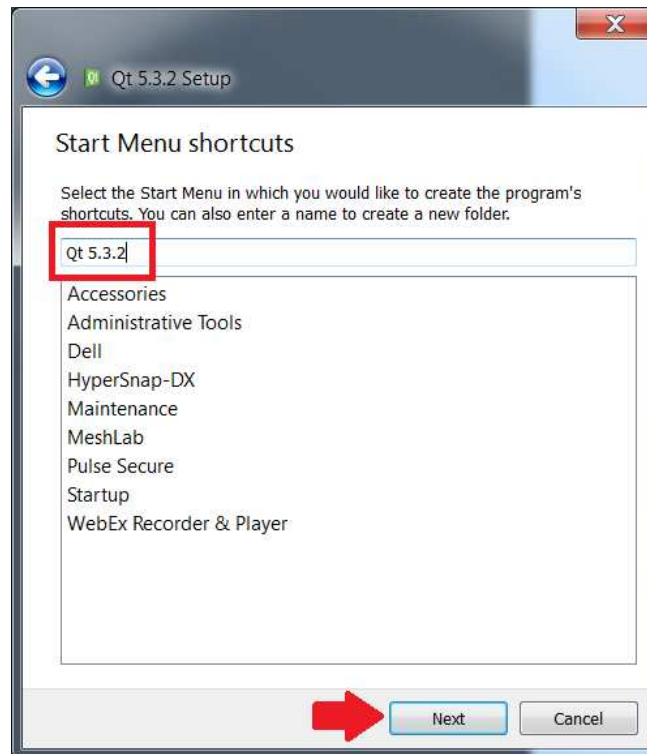


Figure 7. Qt Start Menu Shortcuts

7. Qt is now ready to install, click “Install” as shown in [Figure 8](#). Qt will begin installing. Wait for the installation to complete.

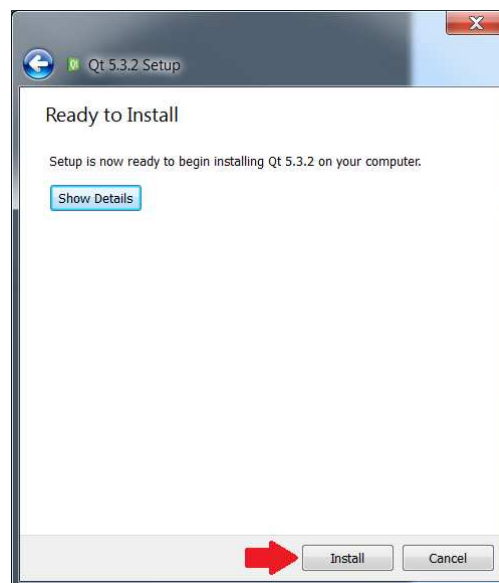


Figure 8. Qt Ready to Install

8. Once Qt has finished installing, click "Finish." Uncheck the boxes for launching Qt Creator and opening the readme as in [Figure 9](#).

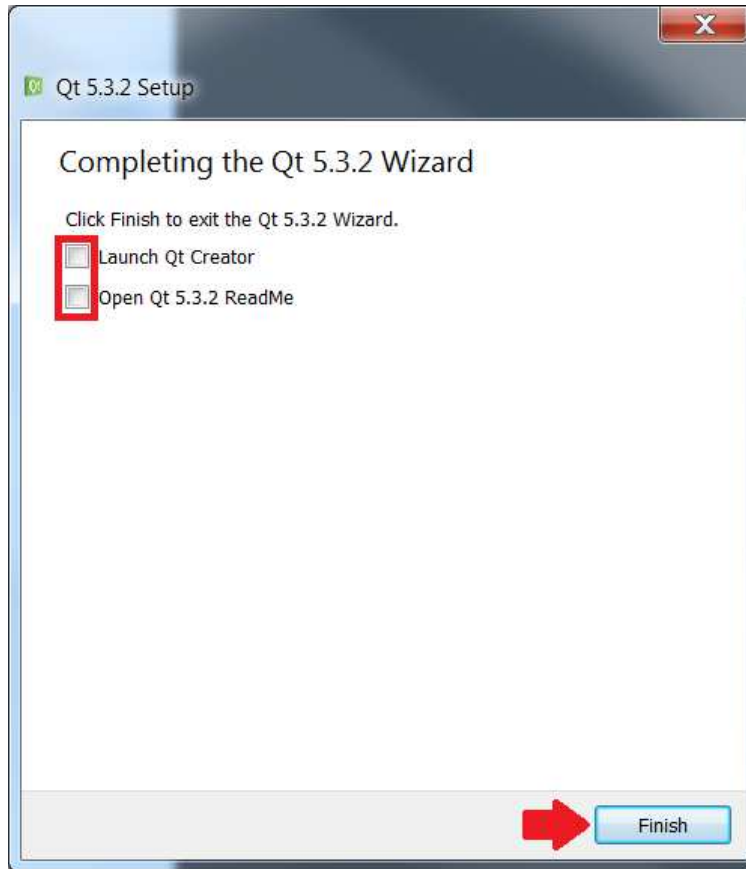


Figure 9. Qt Install Complete

9. Qt is now installed.

4 Configuring the System to Use MinGW

This section guides the user through modifying environment variables to add the MinGW compiler installed with Qt used by the DLP ALC SDK.

1. Using File Explorer, navigate to the Qt installation location and find the MinGW binary folder location. Copy the path. In this example, shown in [Figure 10](#), the path is C:\Qt\Qt5.3.2\Tools\mingw482_32\bin

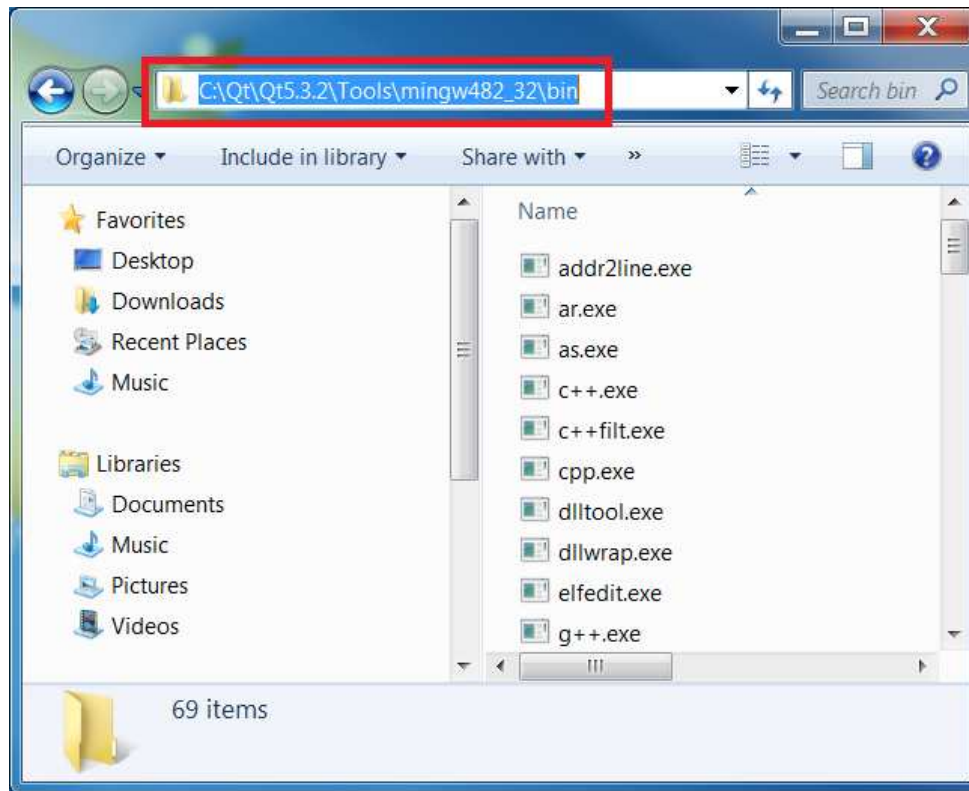


Figure 10. MinGW Path

2. In the Start Menu, search for “Edit the System Environment” and select “Edit the system environment variables.” Refer to [Figure 11](#).

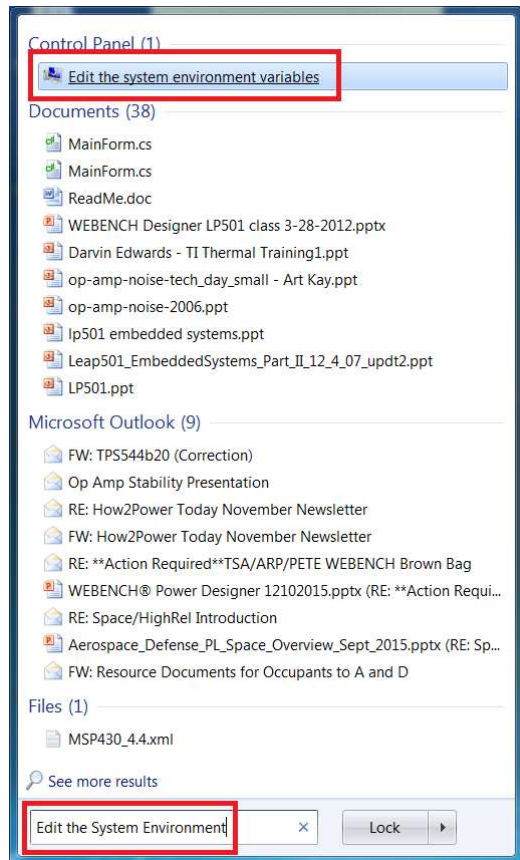


Figure 11. System Environment Variables

3. Once the system properties window opens, select the “Environment Variables” button in the “Advanced” tab as shown in [Figure 12](#).

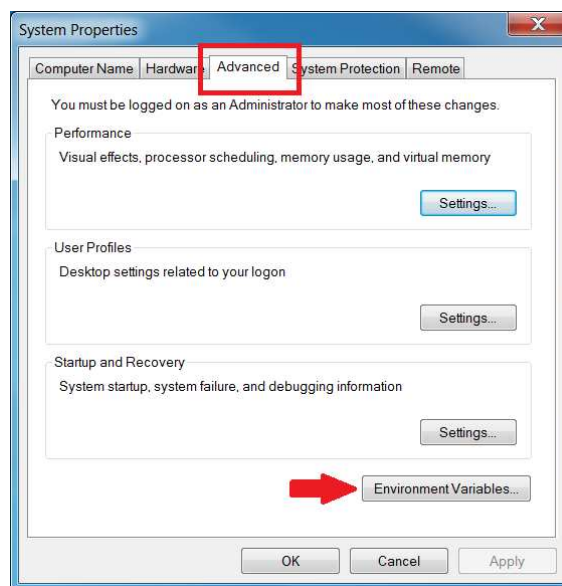


Figure 12. Open Environment Variables

- In the system variables field, browse to the entry labeled “Path” or “PATH.” Highlight the entry and click “Edit” as shown in [Figure 13](#).

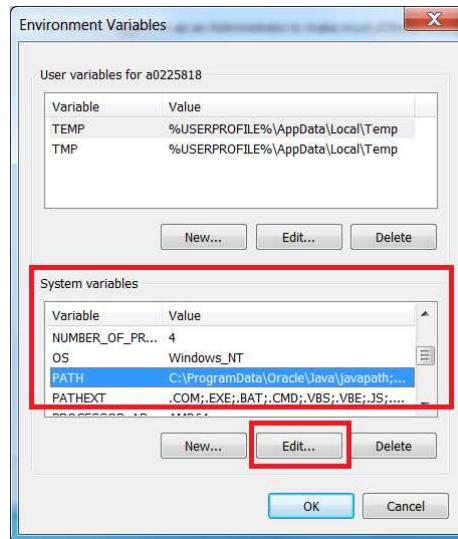


Figure 13. Edit PATH Environment Variable

- Insert the MinGW path that was copied earlier at the end of the “Variable value” field as shown in [Figure 14](#). Click “OK” to make the changes.
Note: Make sure that the entries in this field are separated by a semicolon.

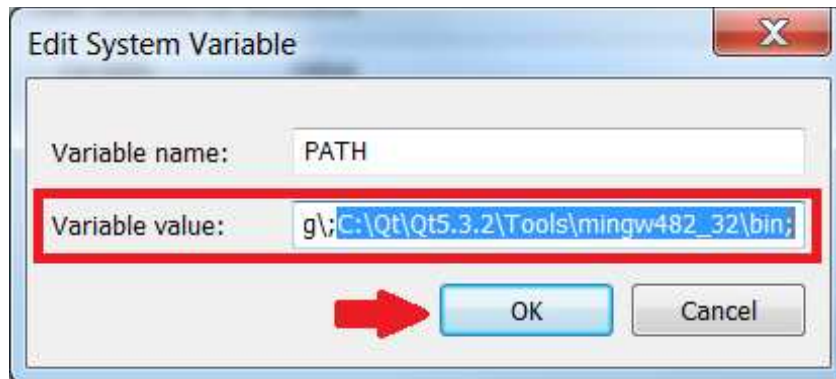


Figure 14. Insert MinGW Path

- Click “OK” to get out of the Environment Variables window. Qt and MinGW have been installed and configured for the remaining steps in this build process.
Note: At this stage, restart the computer for the changes to take effect.

5 Installing CMake

This section guides the user on how to install CMake, which is used to build OpenCV and the DLP ALC SDK.

1. Download CMake from the link in [Section 1](#). Select the Windows installer as shown in [Figure 15](#).

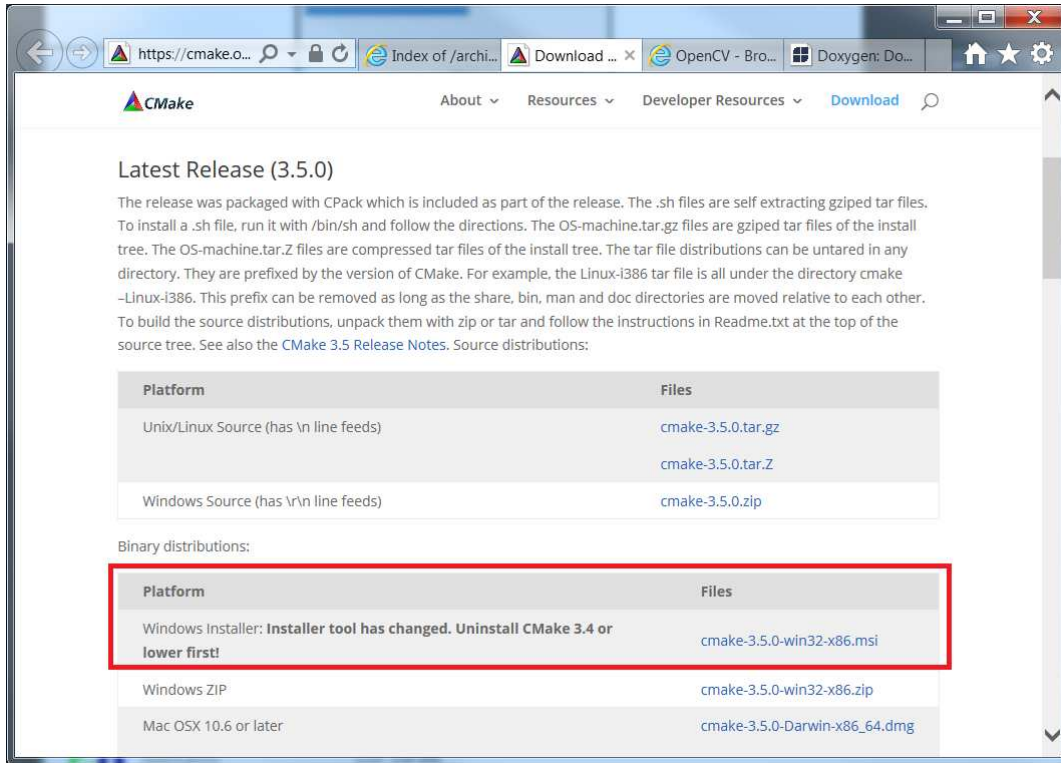


Figure 15. CMake Website

2. Once the download is complete, run the executable. Click “Next” as shown in [Figure 16](#).

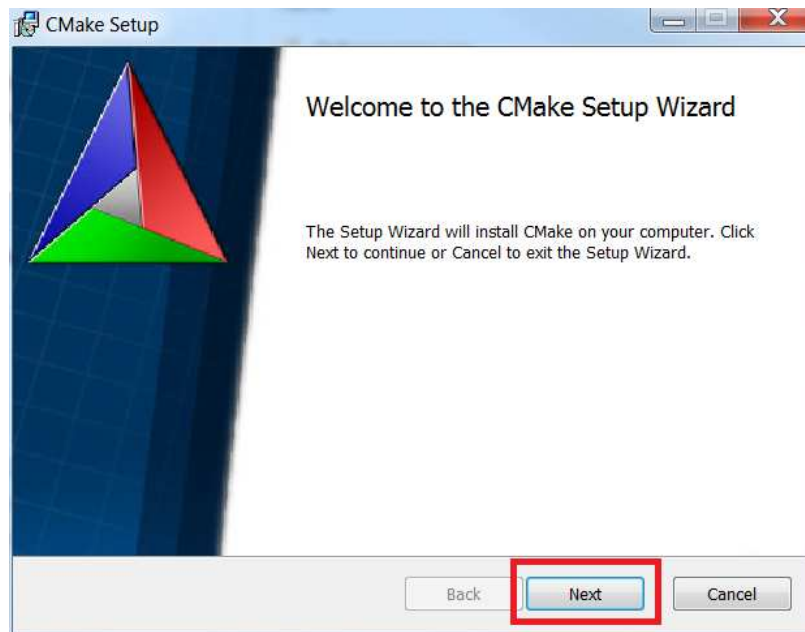


Figure 16. Open CMake Installer

3. Read and accept the license agreement. In the Install Options window, select the radio button indicating “Do not add CMake to the system PATH” as shown in [Figure 17](#).

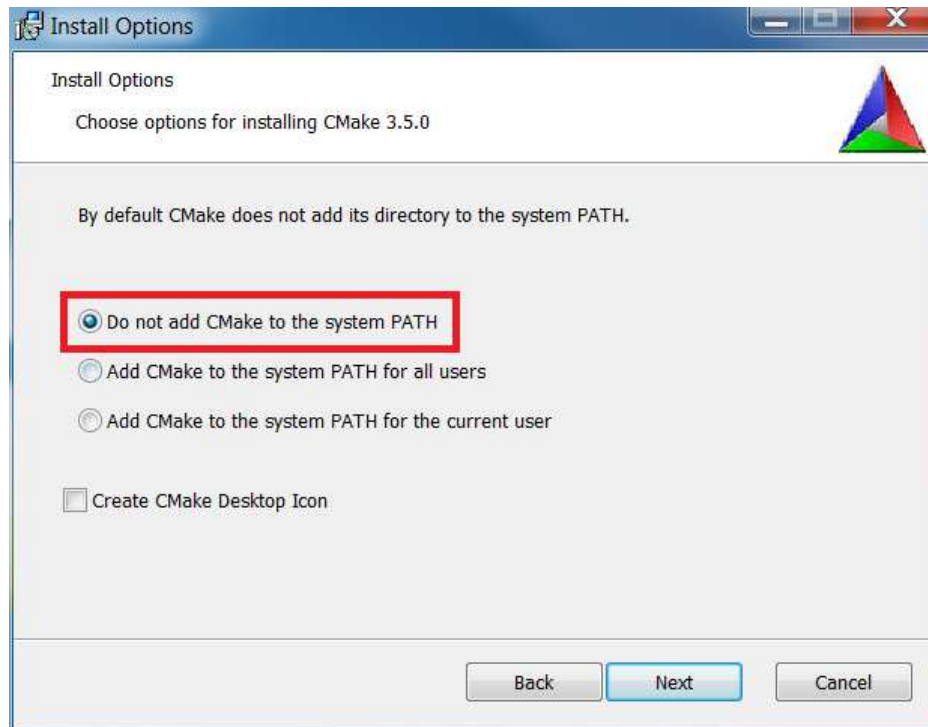


Figure 17. CMake Install Options

4. Choose a destination folder for CMake, click “Next” as shown in [Figure 18](#).

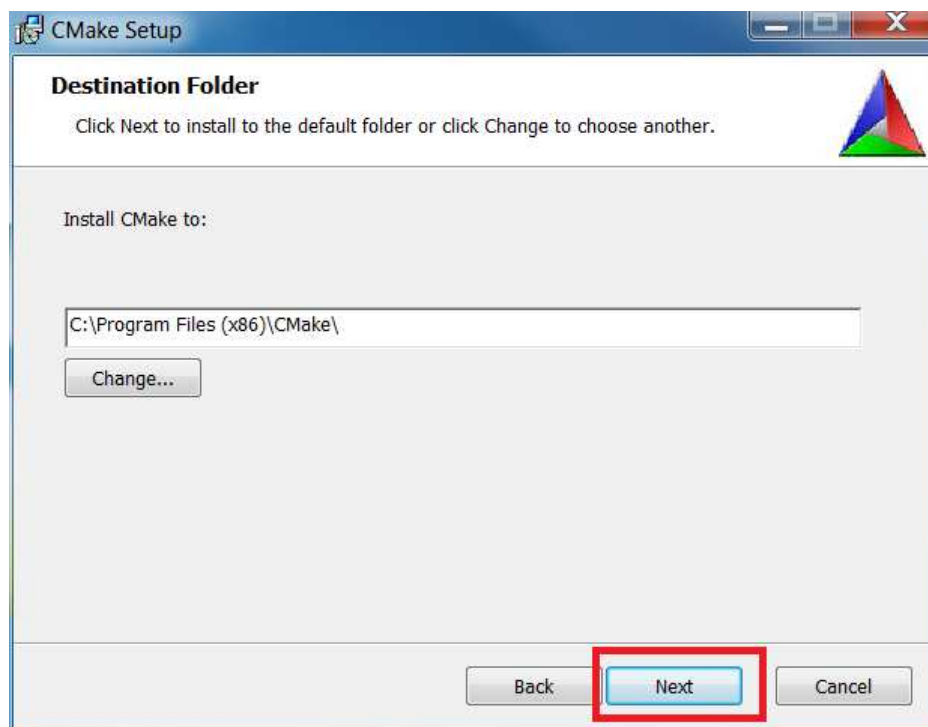


Figure 18. CMake Destination Folder

5. Click "Install" as shown in [Figure 19](#) and let CMake run.

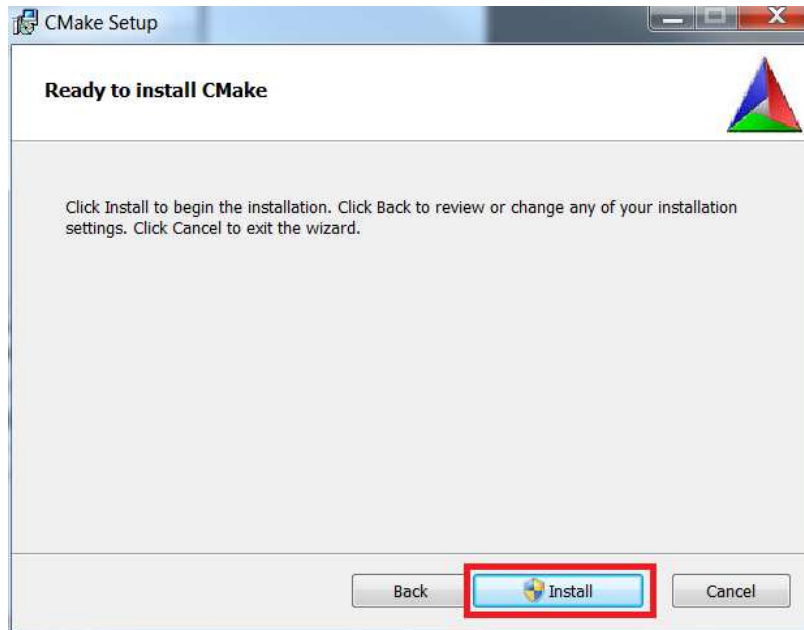


Figure 19. CMake Ready to Install

6. Click "Finish" as shown in [Figure 20](#) and CMake is now installed.

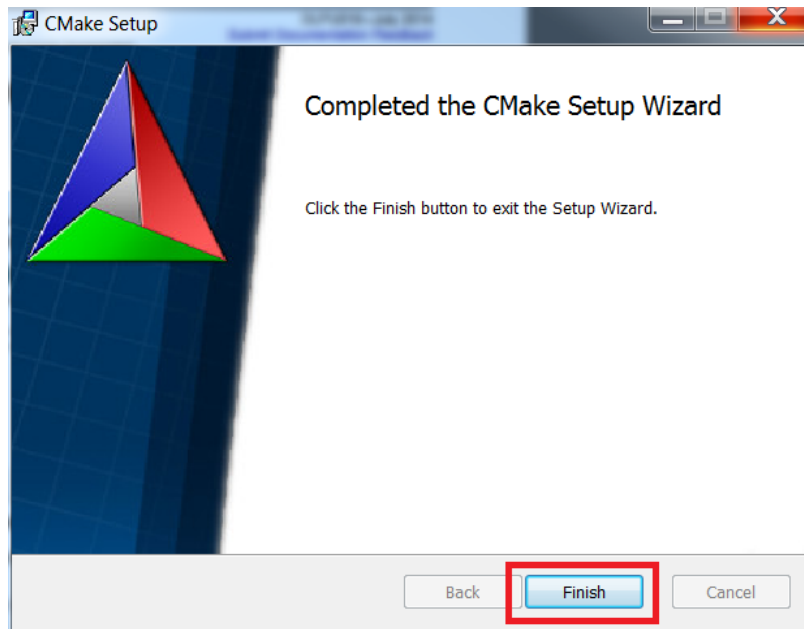


Figure 20. CMake Finished

6 Building OpenCV

OpenCV is an open source library dedicated to computer and machine vision applications. It is used by the DLP ALC SDK for its algorithms. This section guides the user on building OpenCV using CMake.

1. Download OpenCV from the link in Section 1. Figure 21 shows the link on the download page. Once the download is complete, run the executable.

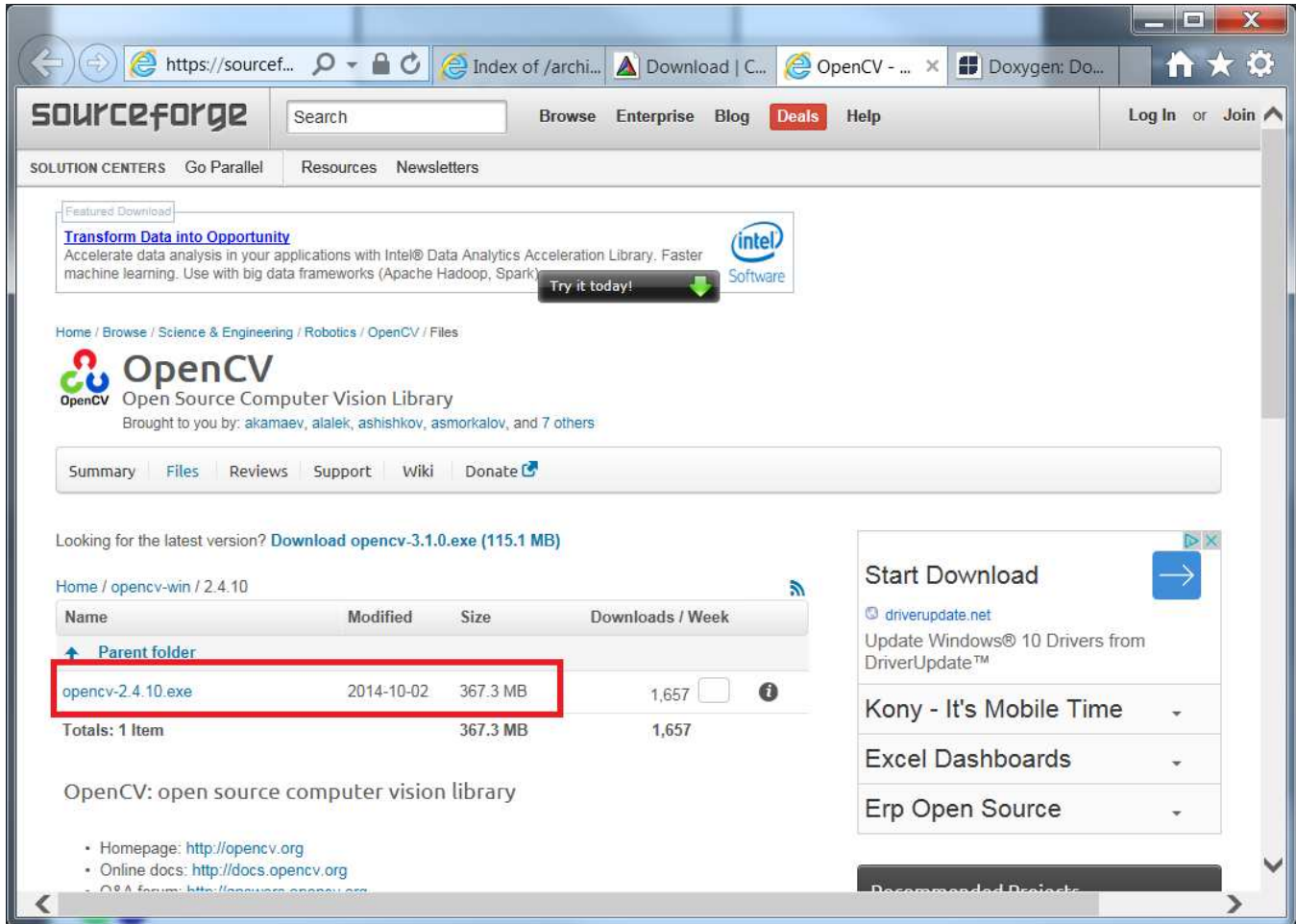


Figure 21. OpenCV Website

2. Choose a suitable place to extract the files and select “Extract” as shown in Figure 22.

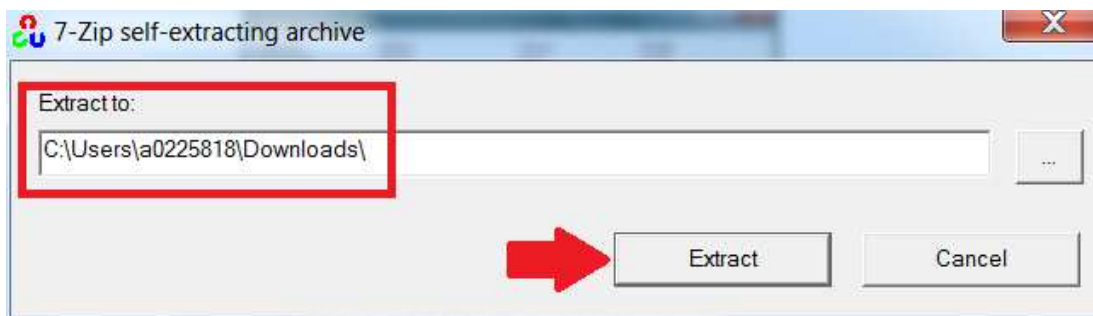


Figure 22. Extract OpenCV

3. Once the files have extracted, open the Start Menu. Search for and select “CMake (cmake-gui)” as shown in [Figure 23](#).



Figure 23. Find CMake to Build OpenCV

4. When the GUI is first opened, it should look like [Figure 24](#).

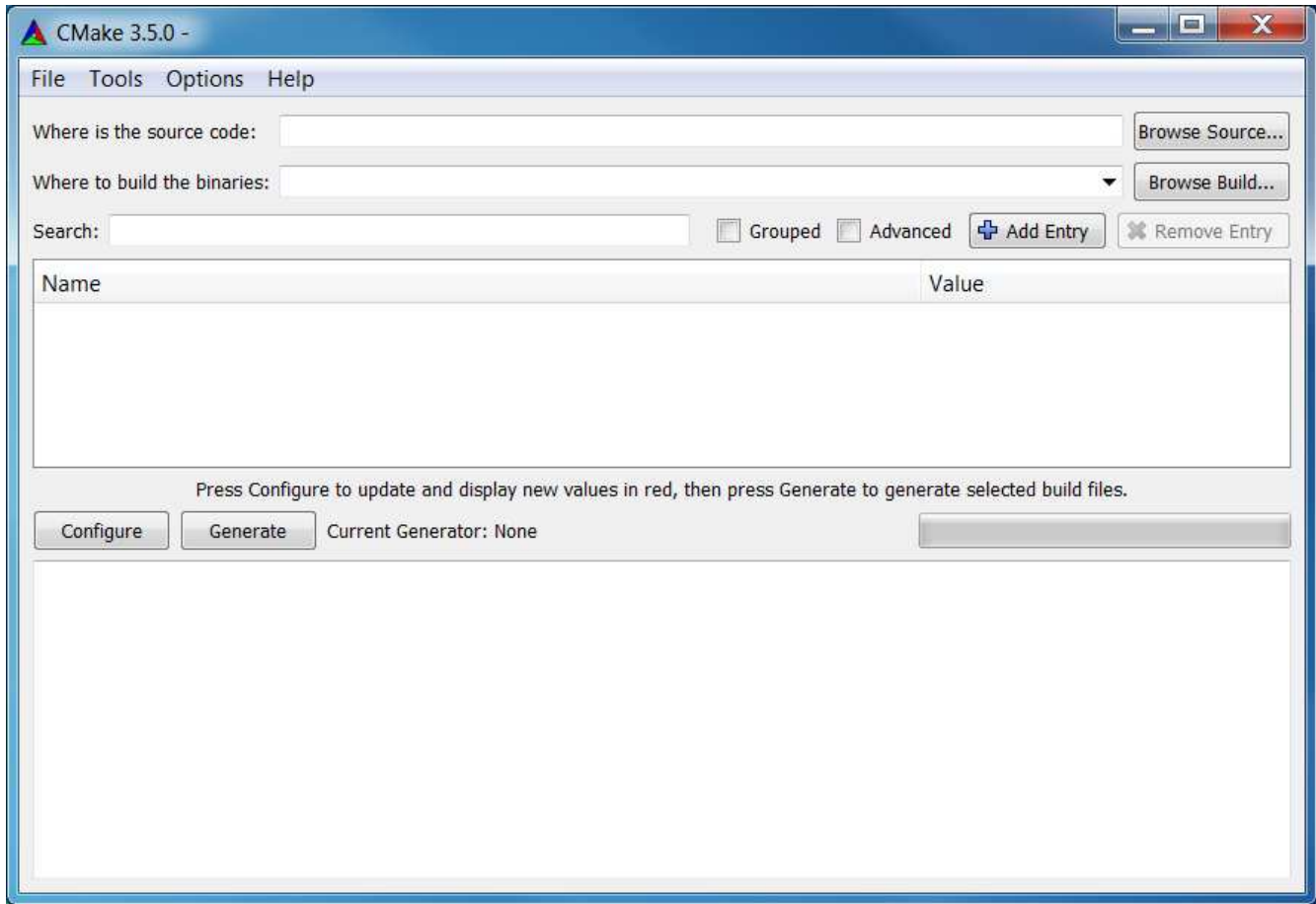


Figure 24. Default CMake GUI

5. Check the “Grouped” box and browse for the path of the OpenCV source files. The path should be of the form C:/Users/<username>/Downloads/opencv/sources as shown in [Figure 25](#).

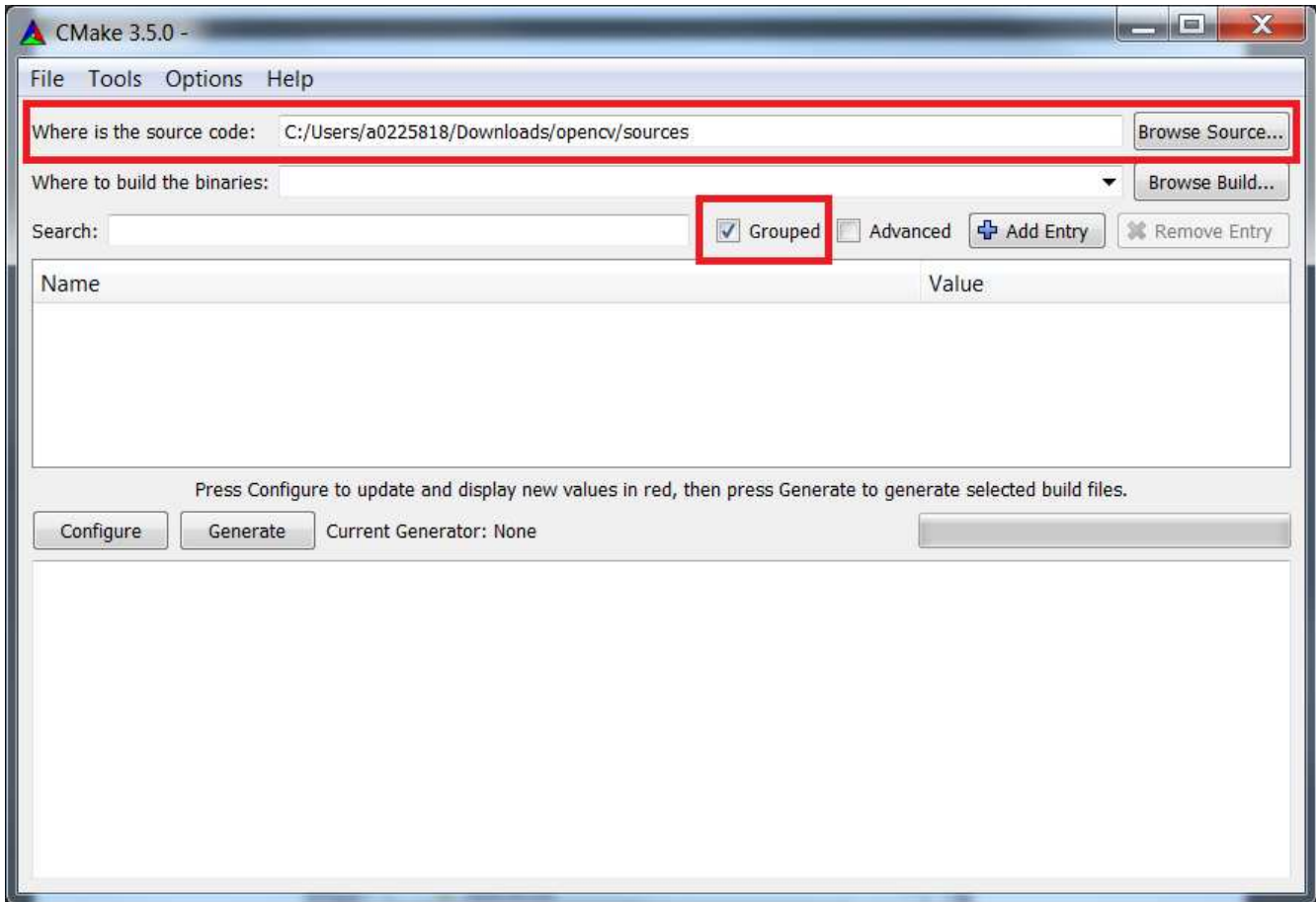


Figure 25. Set Source Path

- Click "Browse Build" and create a new folder for the built OpenCV files as shown in [Figure 26](#).

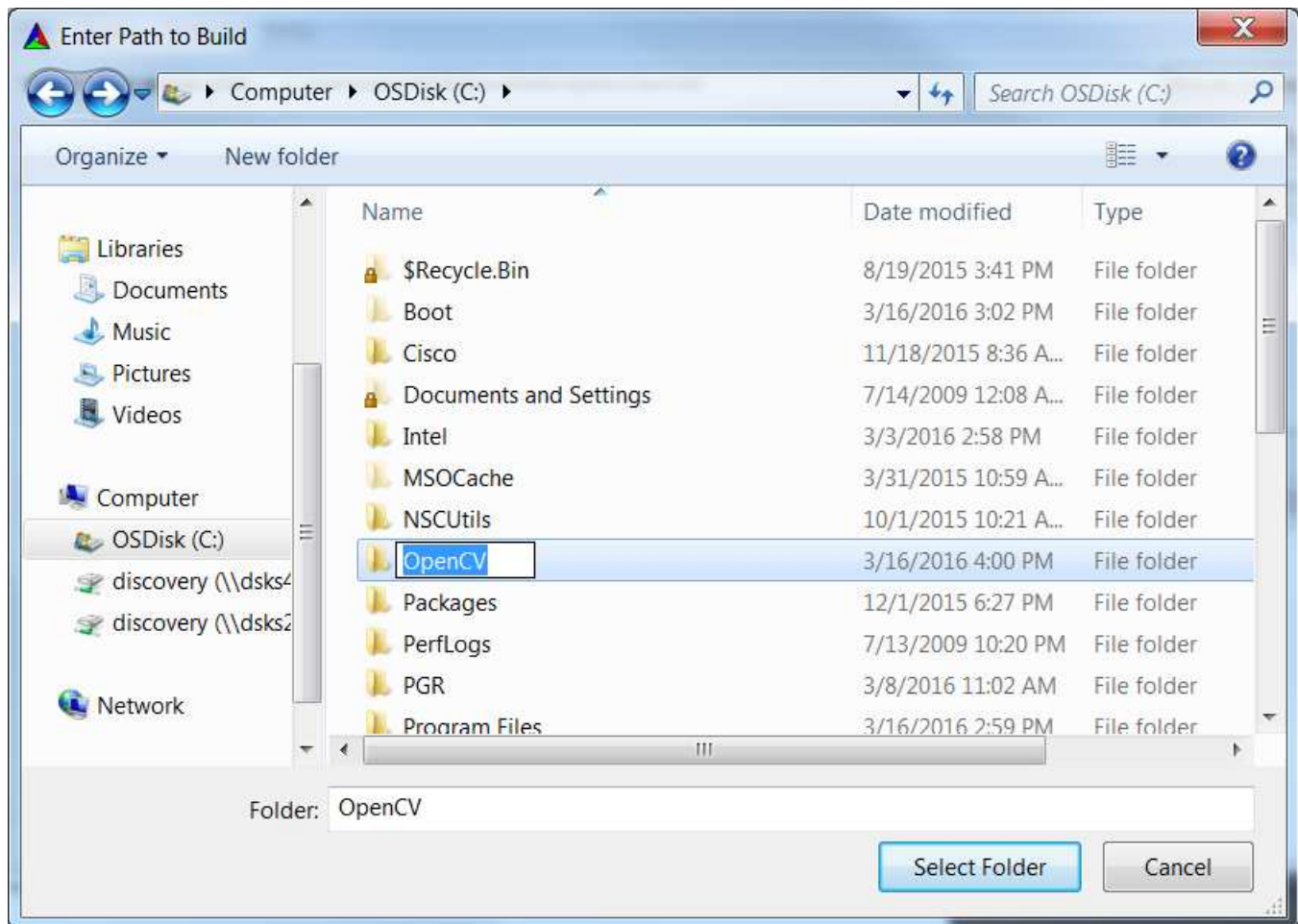


Figure 26. Build New Folder

- Then click “Configure” in the CMake GUI. In the drop down, find “MinGW Makefiles” as shown in Figure 27.

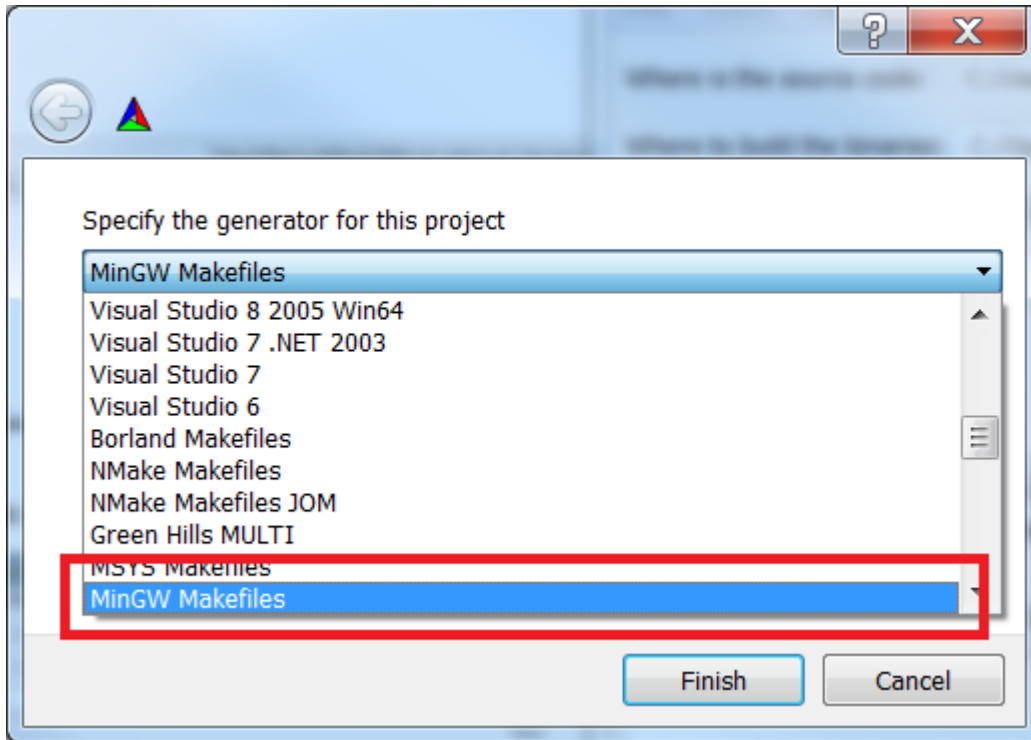


Figure 27. CMake Specify Generator

- Select the “Use default native compilers” radio button and then select "Finish" as shown in Figure 28. CMake will now configure the OpenCV files. It should configure with no errors.

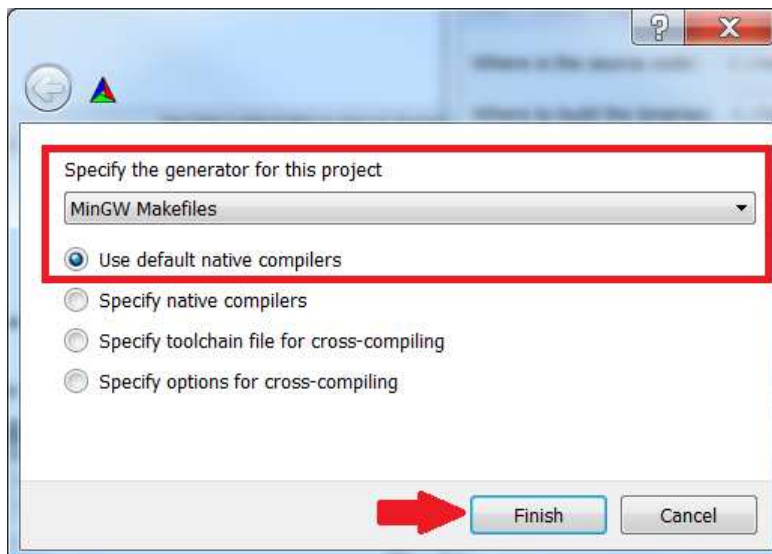


Figure 28. CMake Configure Generators

9. If an error occurs immediately, check the PATH variable and make sure that it includes the MinGW path from [Section 4](#). Also make sure the computer was restarted after that change. If the error persists, use the “Specify native compilers” option as shown in [Figure 29](#). Click “Next” to continue. [Figure 30](#) shows the compiler selection menu. Browse for both the C and C++ compilers in the Qt MinGW binary folder. For the C compiler, select gcc.exe and for the C++ compiler select the g++.exe as shown in [Figure 31](#). Once this is complete, the compilers window should look like [Figure 32](#). CMake will try configuring again.

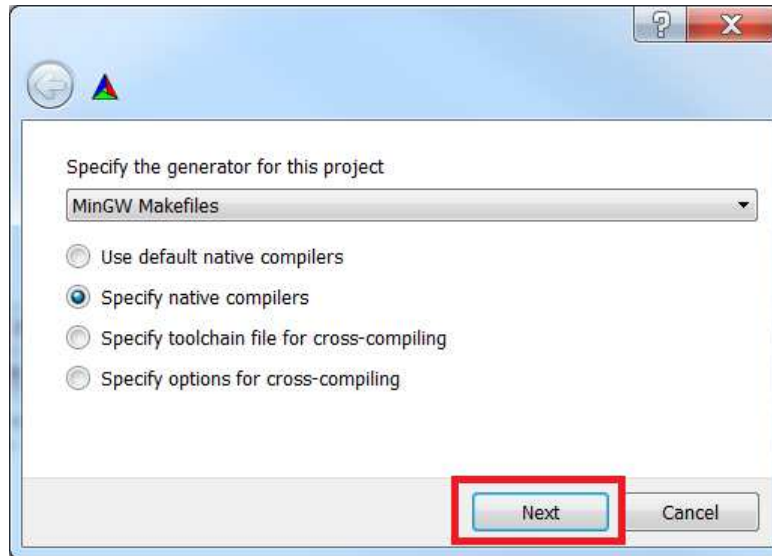


Figure 29. CMake Specify Compilers

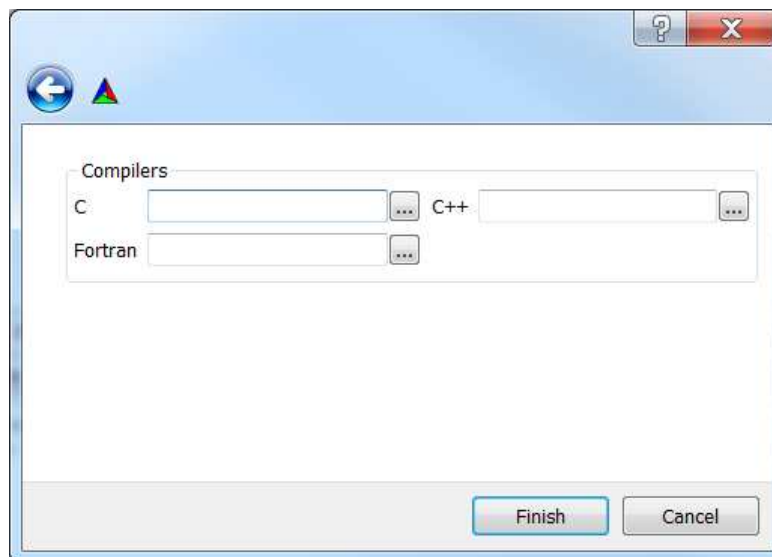


Figure 30. CMake Specify Compiler Menu

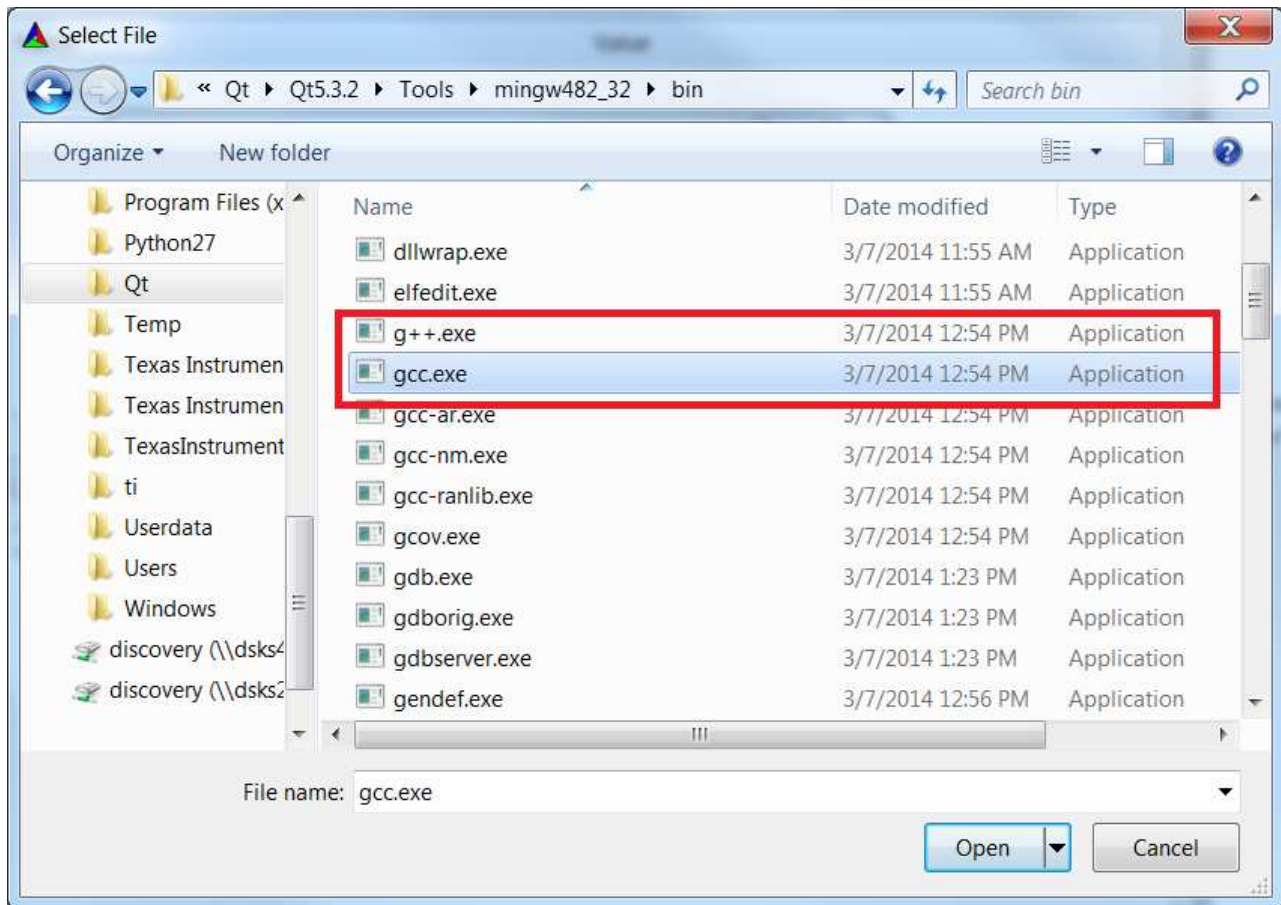


Figure 31. Browse for Compilers

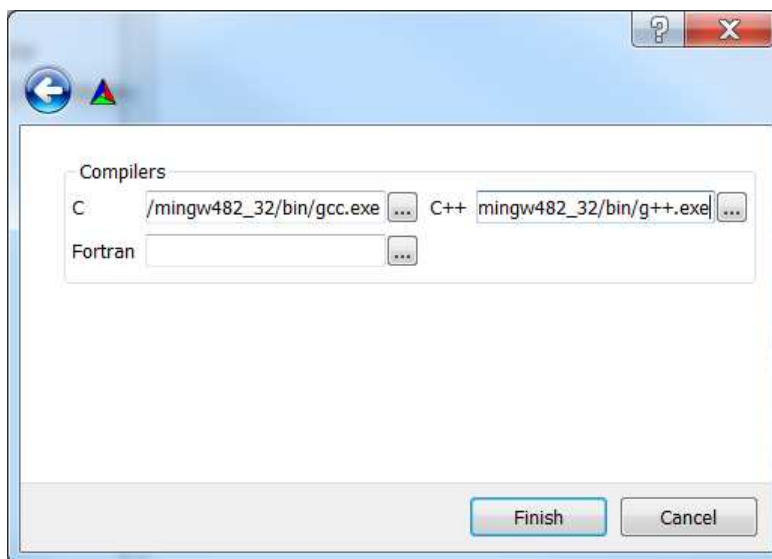


Figure 32. CMake Compilers Selected

10. Once the configuration is done, the CMake GUI should look like [Figure 33](#).

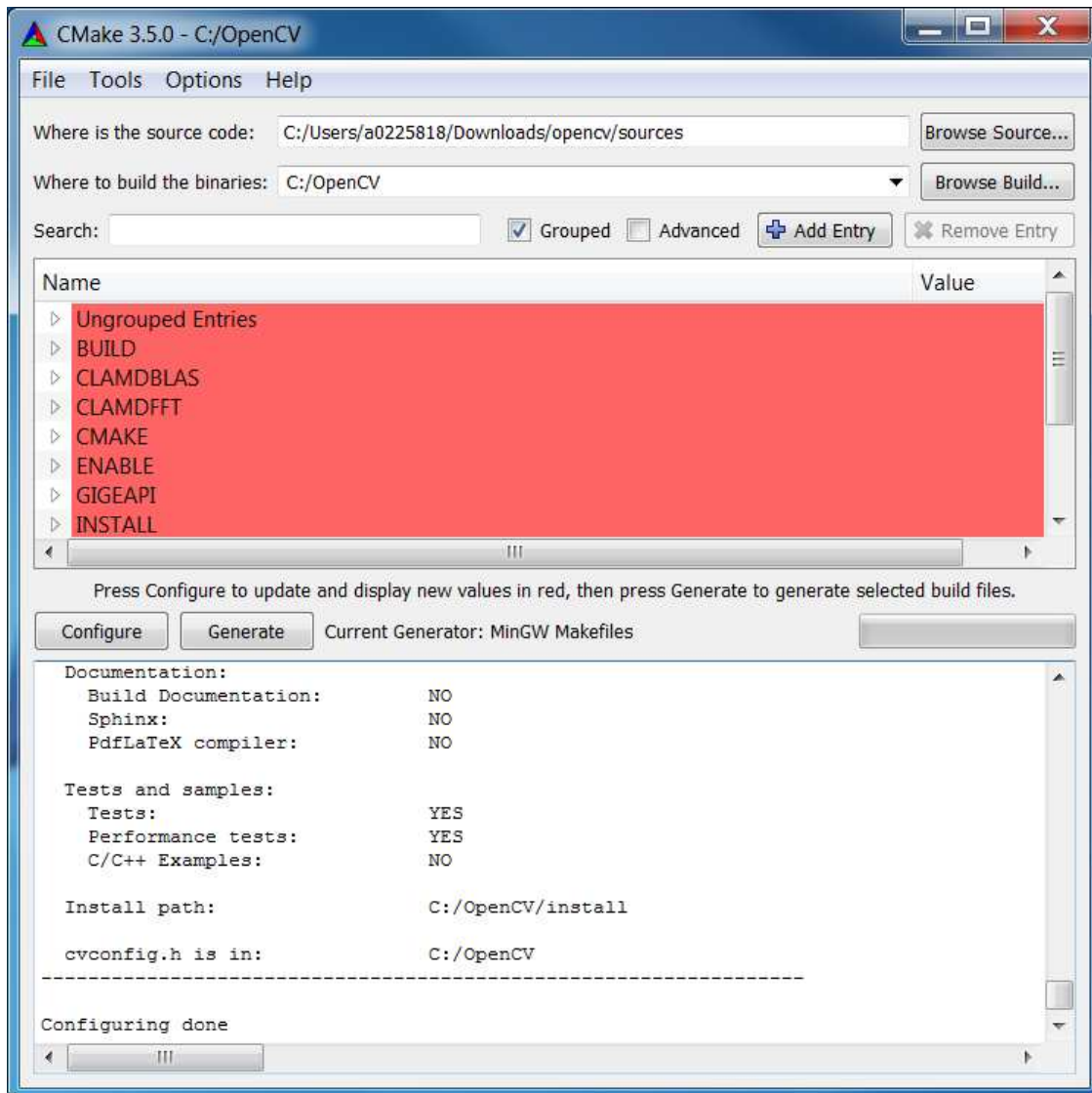


Figure 33. OpenCV Post Configuration

- Find CMAKE_CONFIGURATION_TYPES as shown in Figure 34. Type “Release” into that space. Click on the “Generate” button. Allow CMake to run and finish generating the files. There should be no errors.

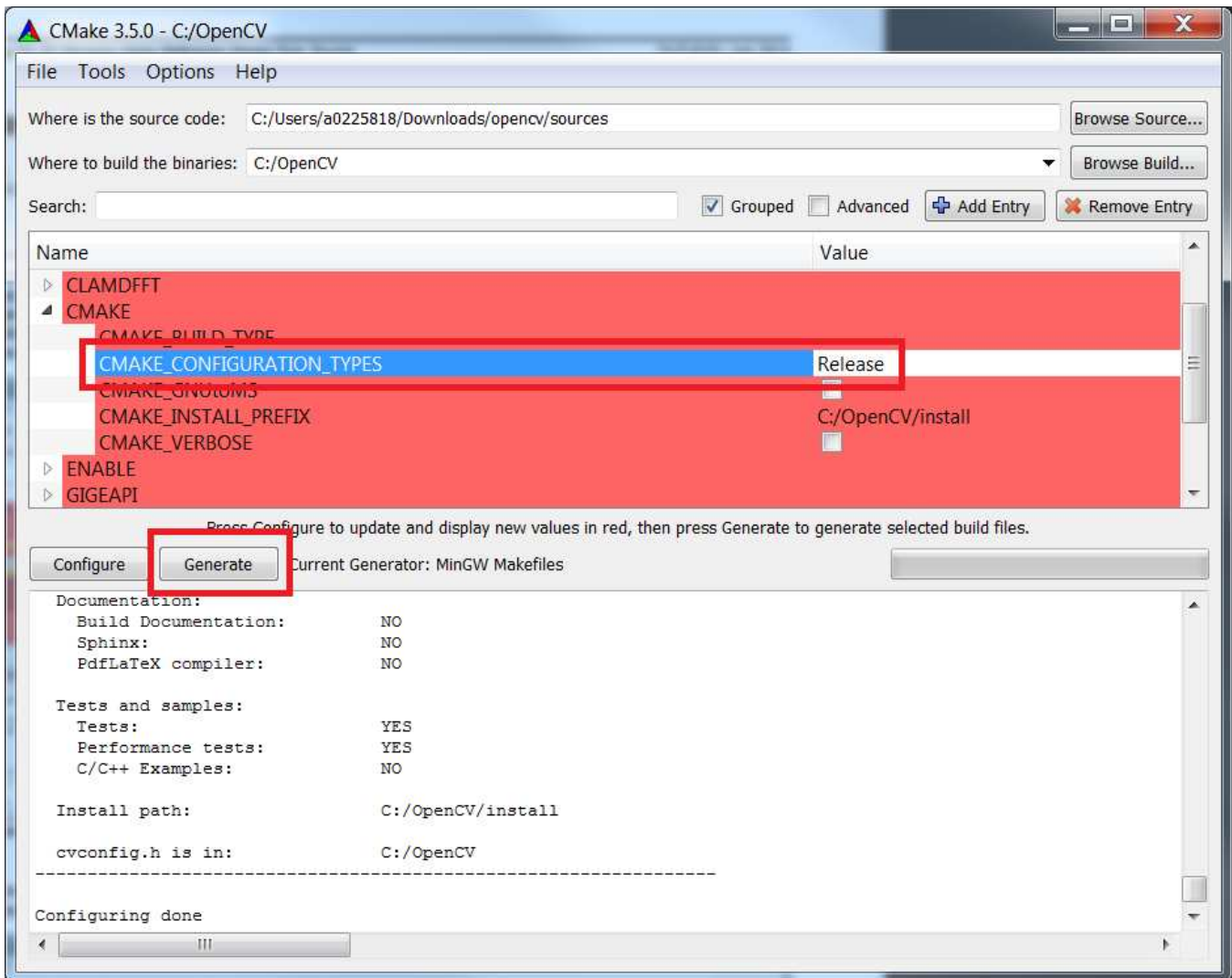


Figure 34. Change Configuration Type to Release

12. Next, in File Explorer, browse to where the OpenCV files were built. In the file path line, type “cmd” as shown in [Figure 35](#). This will open the command line window in the folder selected.

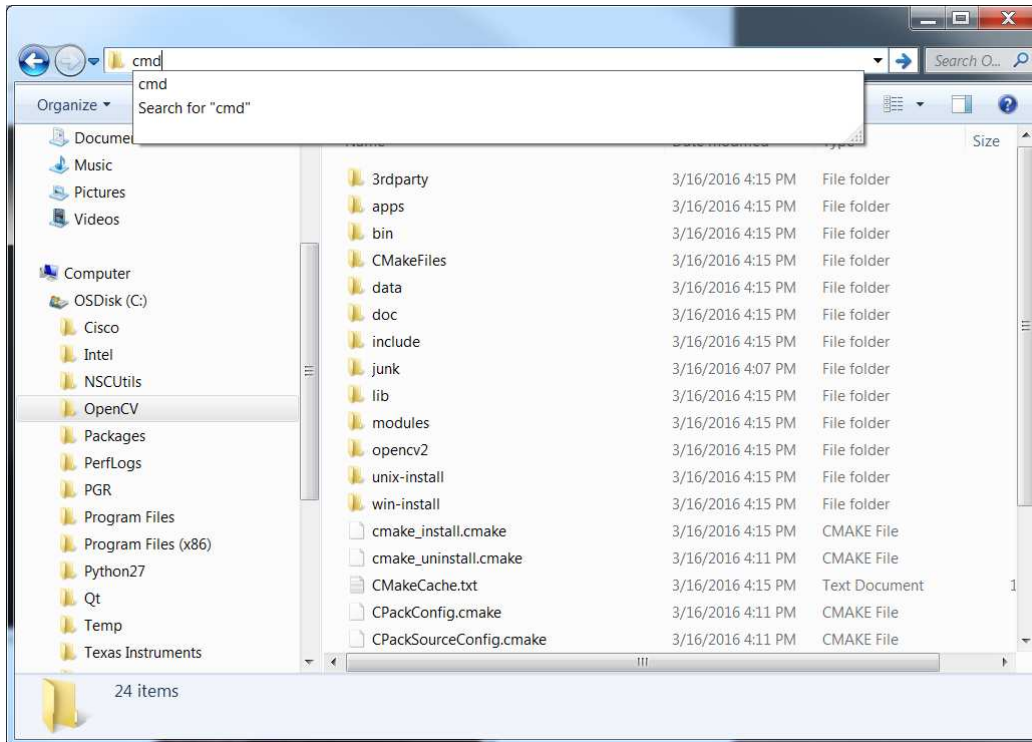


Figure 35. Open Command Line in OpenCV Window

13. As shown in [Figure 36](#), type the command "mingw32-make" and hit enter.

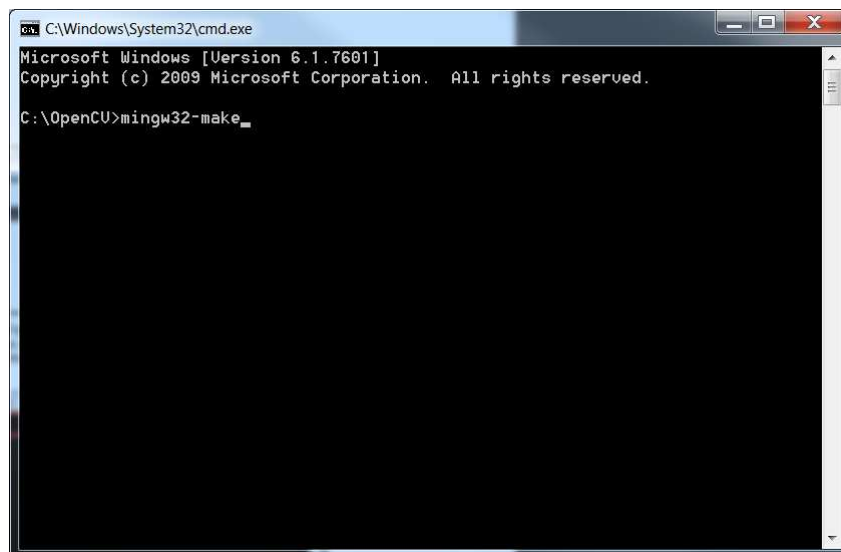
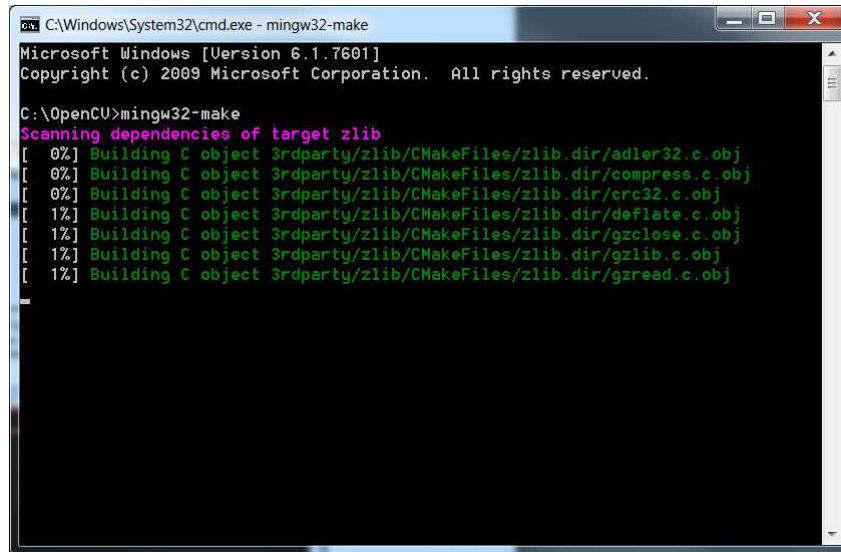


Figure 36. OpenCV CMD MinGW32-make

14. Allow the make command to run. This can take a substantial amount of time depending on your system's processing power. The command line will show progress as in [Figure 37](#).



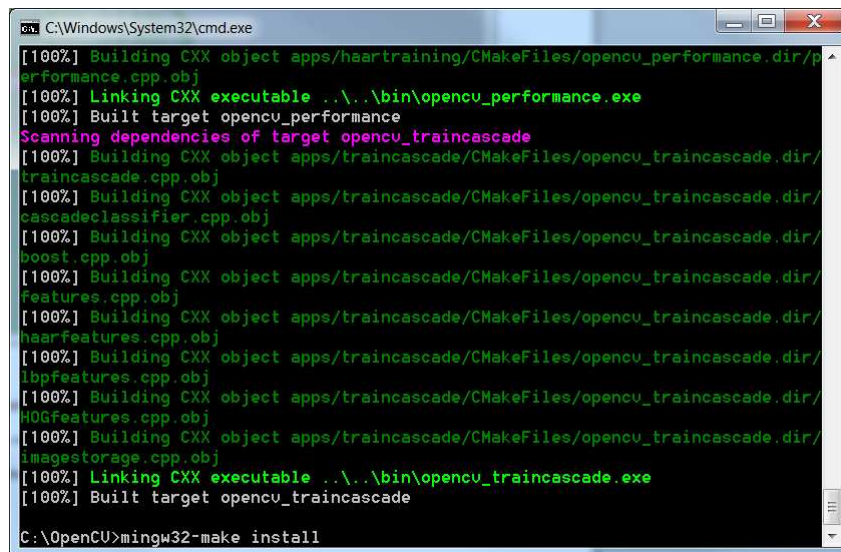
```

C:\Windows\System32\cmd.exe - mingw32-make
Microsoft Windows [Version 6.1.7601]
Copyright (c) 2009 Microsoft Corporation. All rights reserved.

C:\OpenCV>mingw32-make
Scanning dependencies of target zlib
[ 0%] Building C object 3rdparty/zlib/CMakeFiles/zlib.dir/adler32.c.obj
[ 0%] Building C object 3rdparty/zlib/CMakeFiles/zlib.dir/compress.c.obj
[ 0%] Building C object 3rdparty/zlib/CMakeFiles/zlib.dir/crc32.c.obj
[ 1%] Building C object 3rdparty/zlib/CMakeFiles/zlib.dir/deflate.c.obj
[ 1%] Building C object 3rdparty/zlib/CMakeFiles/zlib.dir/gzclose.c.obj
[ 1%] Building C object 3rdparty/zlib/CMakeFiles/zlib.dir/gzlib.c.obj
[ 1%] Building C object 3rdparty/zlib/CMakeFiles/zlib.dir/gzread.c.obj
  
```

Figure 37. OpenCV Making

15. Once this is complete, type the command "mingw32-make" install as shown in [Figure 38](#). This completes the installation of OpenCV.



```

C:\Windows\System32\cmd.exe
[100%] Building CXX object apps/haartraining/CMakeFiles/opencv_performance.dir/p
erformance.cpp.obj
[100%] Linking CXX executable ..\..\bin\opencv_performance.exe
[100%] Built target opencv_performance
Scanning dependencies of target opencv_traincascade
[100%] Building CXX object apps/traincascade/CMakeFiles/opencv_traincascade.dir/
traincascade.cpp.obj
[100%] Building CXX object apps/traincascade/CMakeFiles/opencv_traincascade.dir/
cascadeclassifier.cpp.obj
[100%] Building CXX object apps/traincascade/CMakeFiles/opencv_traincascade.dir/
boost.cpp.obj
[100%] Building CXX object apps/traincascade/CMakeFiles/opencv_traincascade.dir/
features.cpp.obj
[100%] Building CXX object apps/traincascade/CMakeFiles/opencv_traincascade.dir/
haarfeatures.cpp.obj
[100%] Building CXX object apps/traincascade/CMakeFiles/opencv_traincascade.dir/
lbpfeatures.cpp.obj
[100%] Building CXX object apps/traincascade/CMakeFiles/opencv_traincascade.dir/
HOGfeatures.cpp.obj
[100%] Building CXX object apps/traincascade/CMakeFiles/opencv_traincascade.dir/
imagestorage.cpp.obj
[100%] Linking CXX executable ..\..\bin\opencv_traincascade.exe
[100%] Built target opencv_traincascade

C:\OpenCV>mingw32-make install
  
```

Figure 38. OpenCV Make Install

7 Installing the DLP ALC SDK

This section guides the user through the installation of the DLP ALC SDK. This installer is a wrapper for the source code and copies the files onto the system in the location specified during the installation process. After running the installer, it is still required to build the source code using CMake.

1. Download the DLP ALC SDK from the link in [Section 1](#).
2. Run the executable *DLPSDK-2.0-windows-installer.exe*.
3. The installer will open and present a set-up screen. Click "Next" as shown in [Figure 39](#).

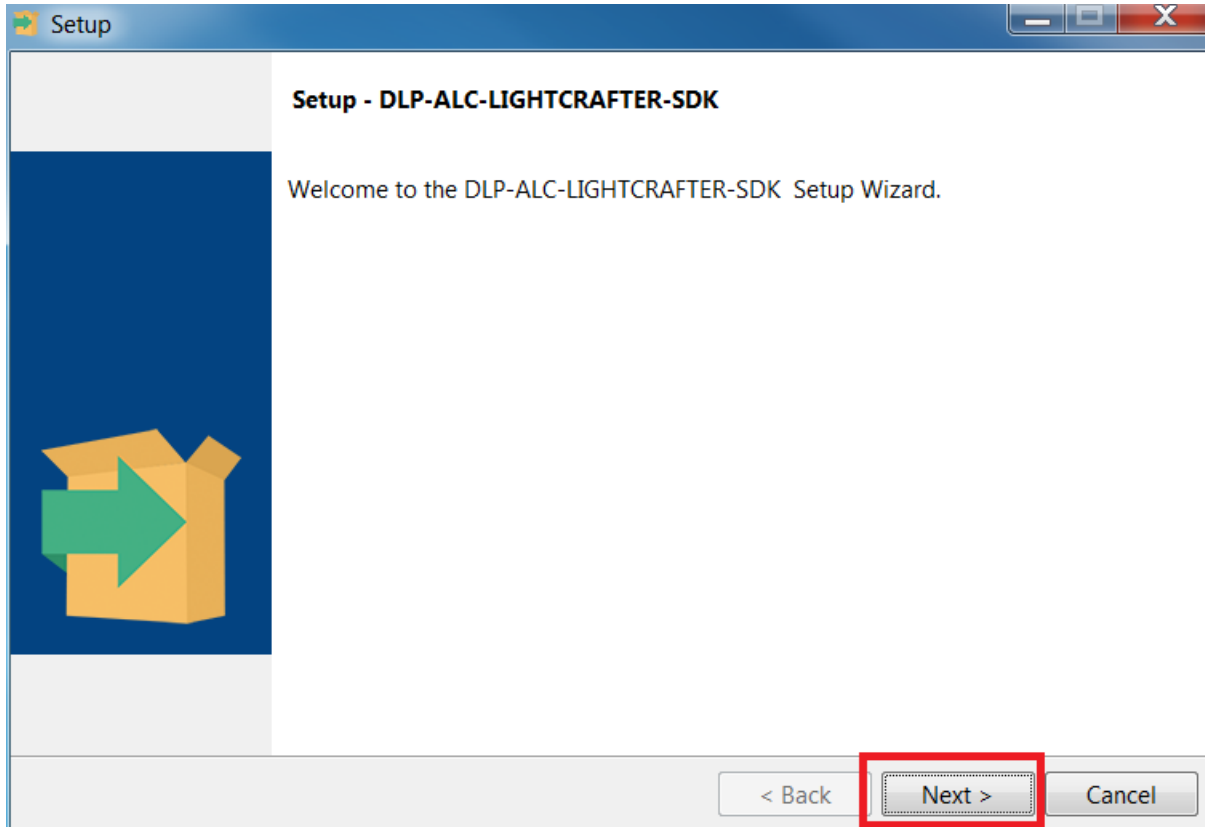


Figure 39. DLP ALC SDK Installer Setup

4. Accept the license agreement shown in [Figure 40](#) and click "Next."

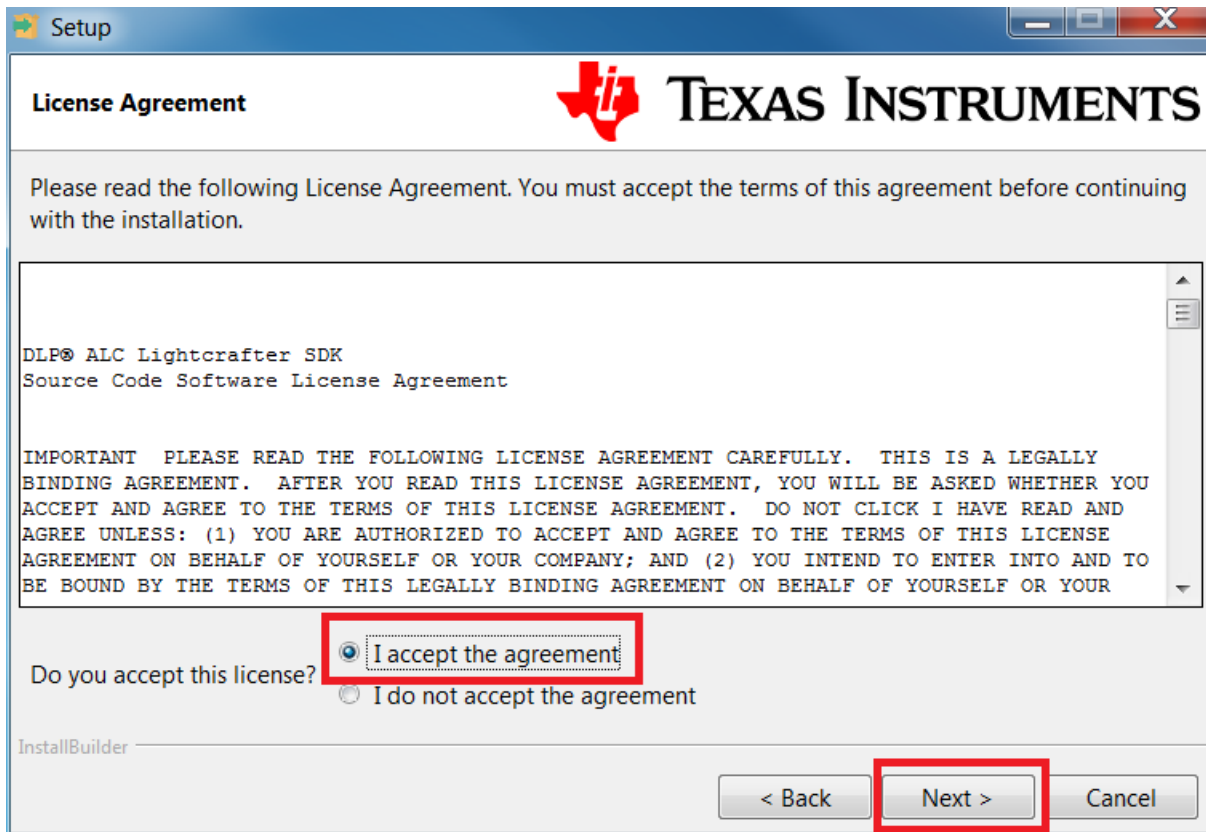


Figure 40. DLP ALC SDK Installer License

5. Select the directory where the files should be stored. The default directory is shown in [Figure 41](#).

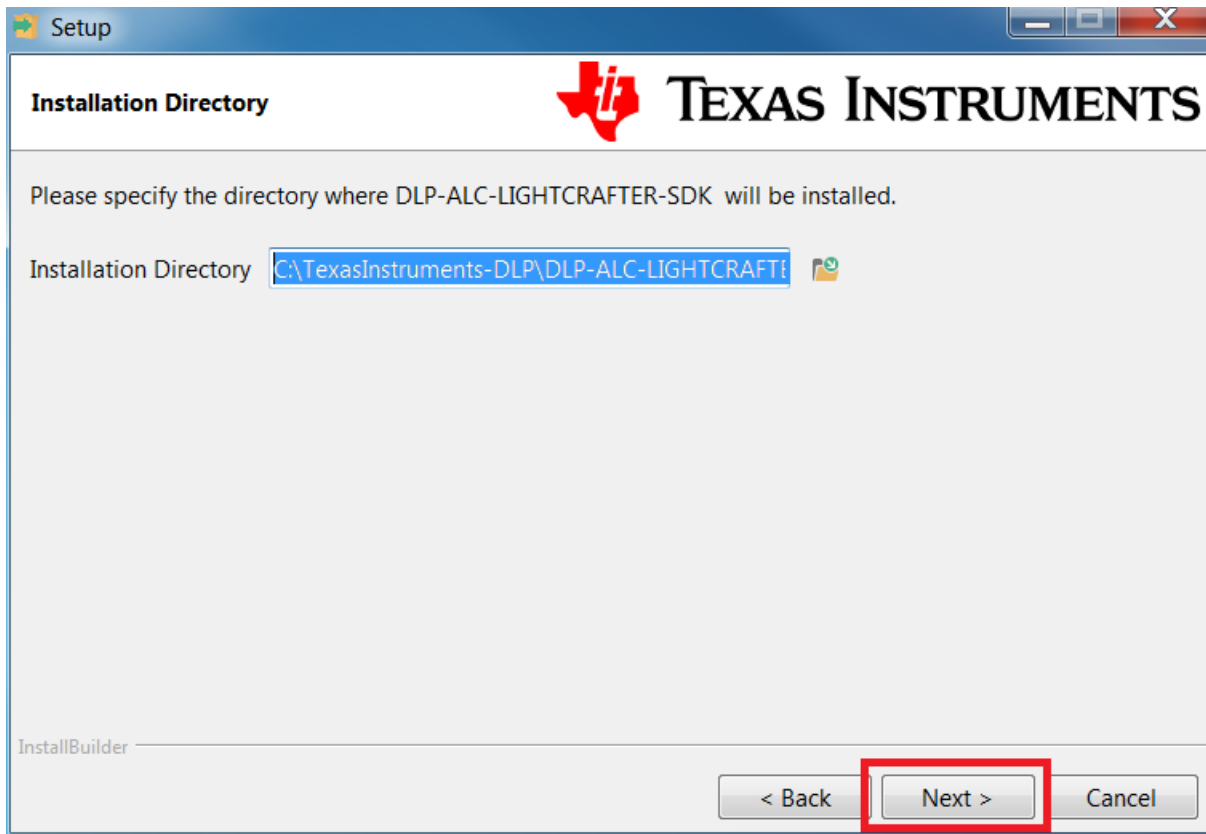


Figure 41. DLP ALC SDK Install Directory

6. The installer is now ready to copy the source files. Select "next" as shown in [Figure 42](#).

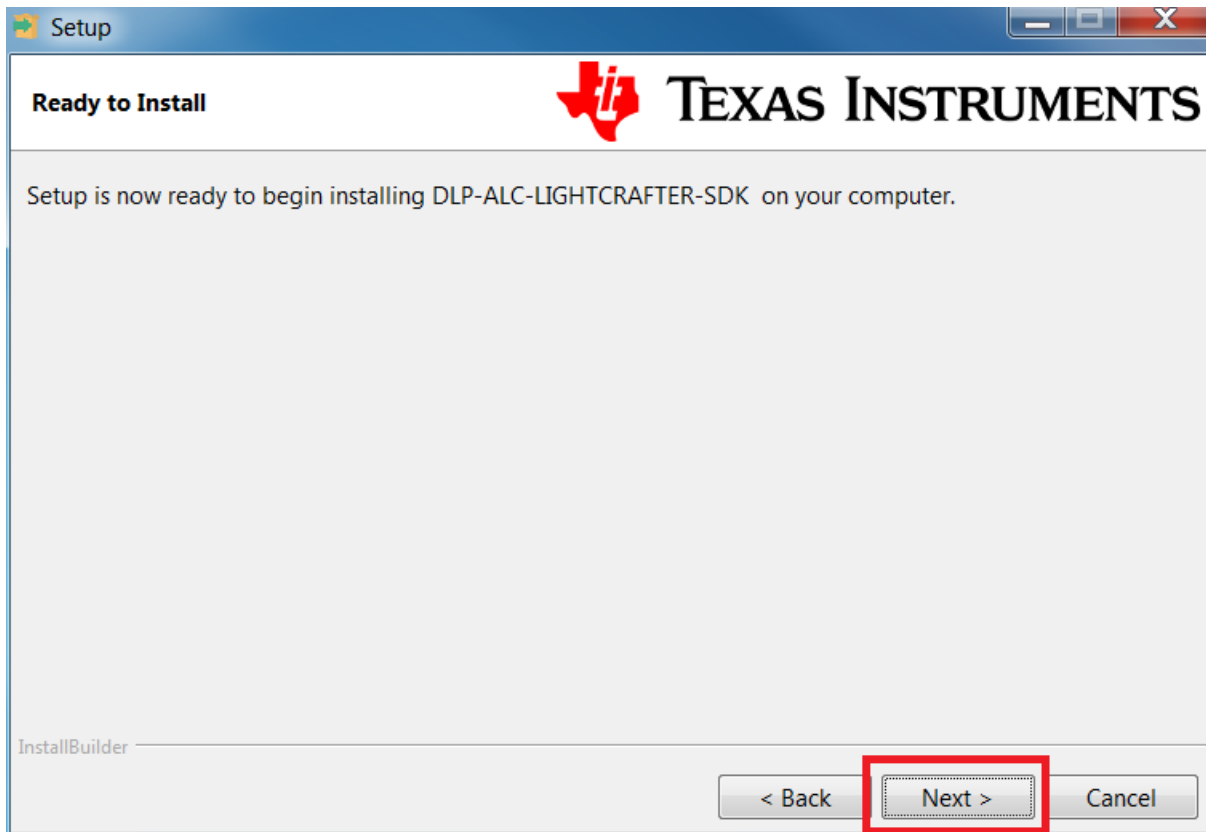


Figure 42. DLP ALC SDK Installer Ready

7. The installer will be copying the files and will display a progress bar as in [Figure 43](#).

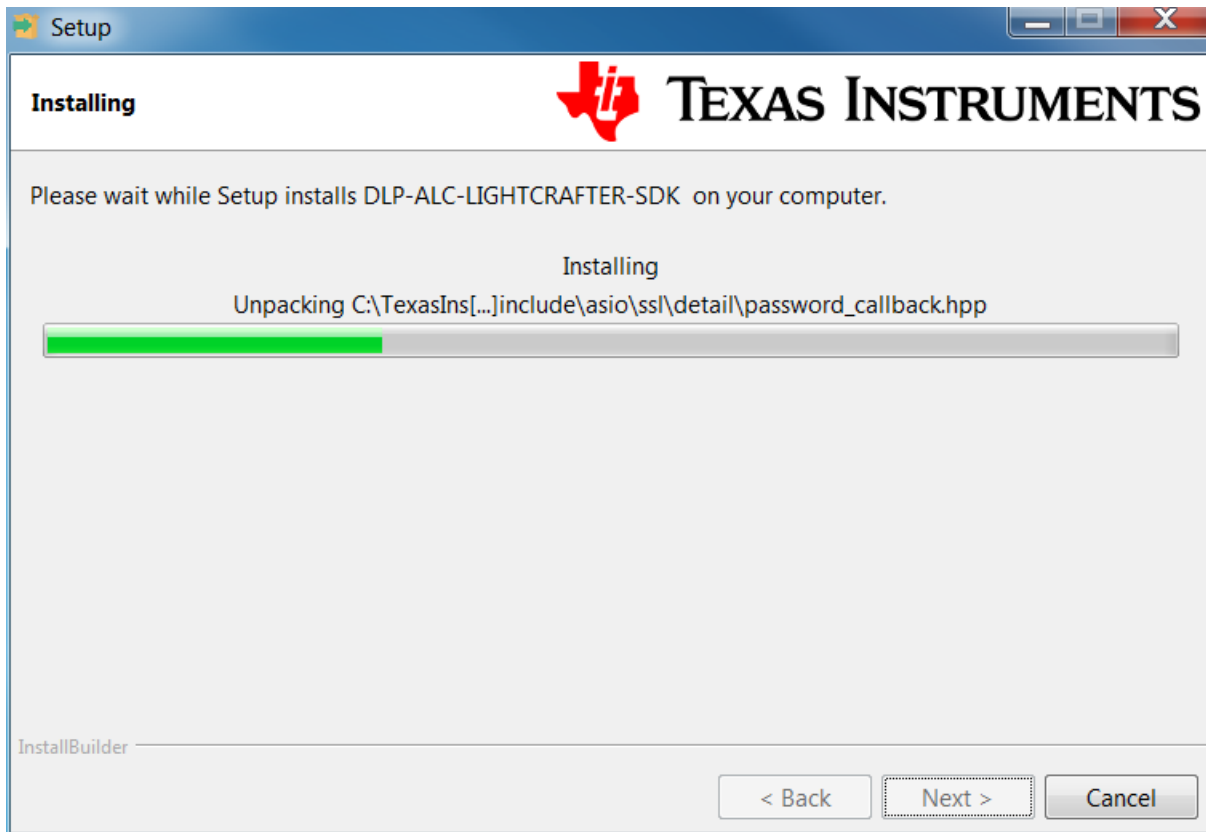


Figure 43. DLP ALC SDK Installer Progress Bar

8. The installer will finish and look like [Figure 44](#). Click "Finish" to exit the installer.

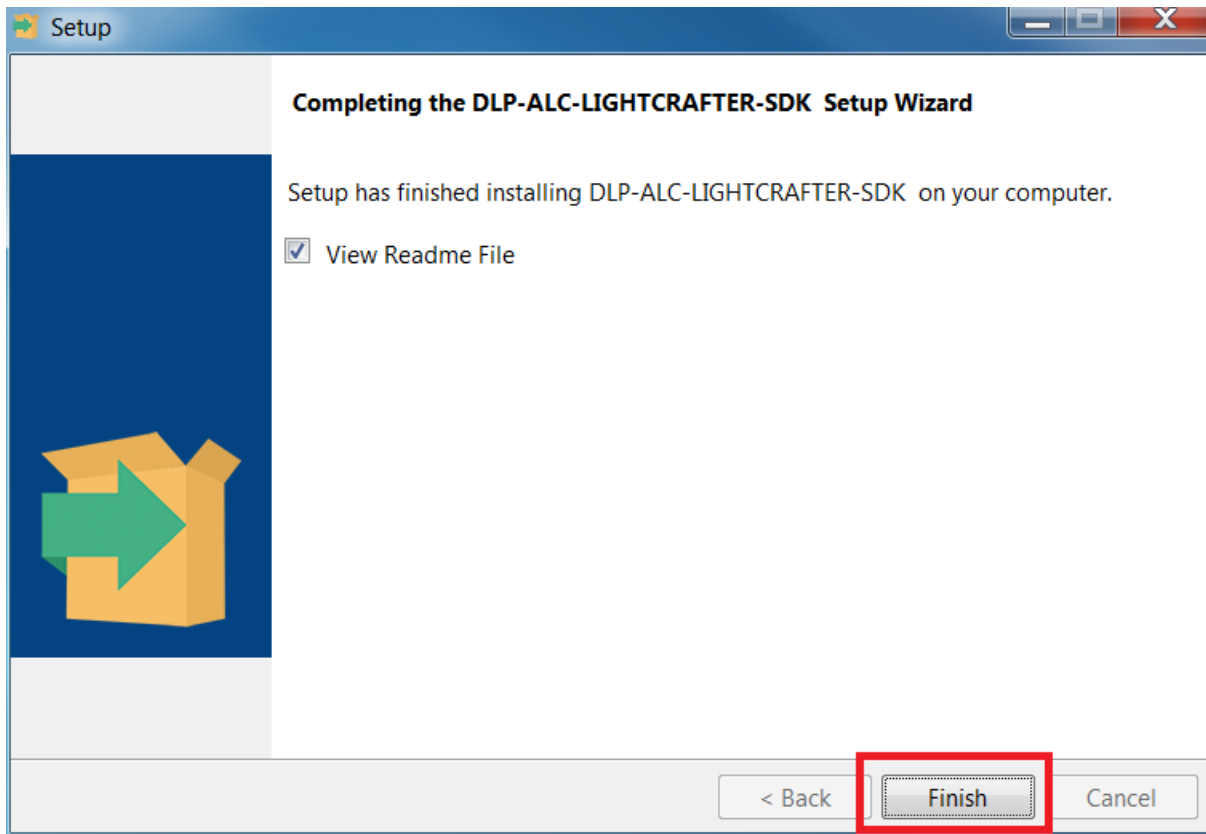


Figure 44. DLP ALC SDK Installer Finished

8 Building the DLP ALC SDK

This section guides the user on building the DLP ALC SDK for 3D scanning.

1. Once the installation from [Section 7](#) is complete, open the CMake GUI as in [Section 6](#).
2. Browse for the source files of the DLP_structured_light_SDK by clicking “Browse Source”. An example file path: C:\TexasInstruments-DLP\DLP-ALC-LIGHTCRAFTER-SDK-2.0\DLP-ALC-LIGHTCRAFTER-SDK.
3. Next, click “Browse Build.” Create a new folder for the built DLP ALC SDK. [Figure 45](#) shows what the CMake GUI should look like. An example file path with a new folder for the built files would be: C:/TexasInstruments-DLP/DLP-ALC-LIGHTCRAFTER-SDK-2.0_bld.

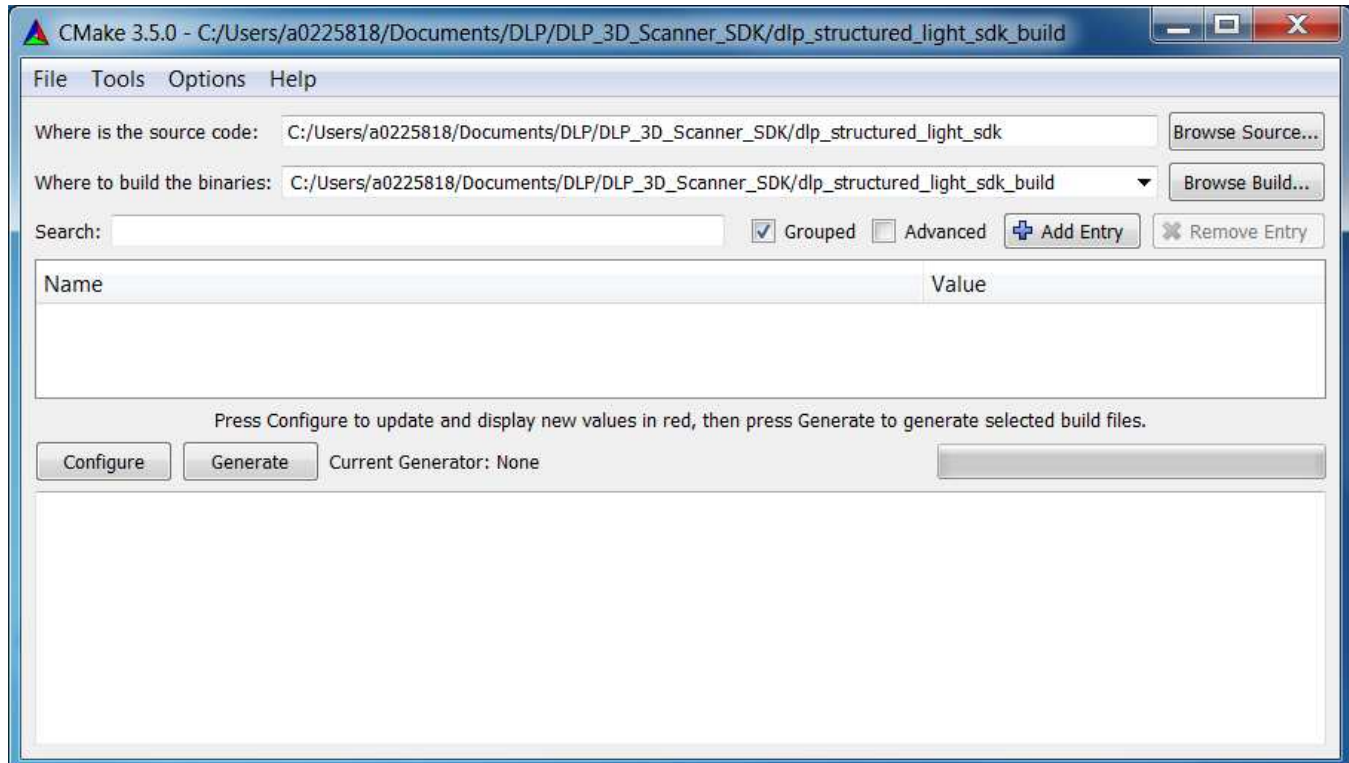


Figure 45. DLP ALC SDK File Paths

- Click “Configure.” Use MinGW Makefiles and default native compilers as in Section 6. Allow CMake to run.

Note: If you get an error as shown in Figure 46, you may need to point CMake to the location of OpenCV. In “Ungrouped entries” look for OpenCV_DIR and browse for the location of OpenCV on your machine. As shown in Figure 47 an example is: C:/OpenCV. Click “Configure” once the path has been specified. There should be no errors displayed.

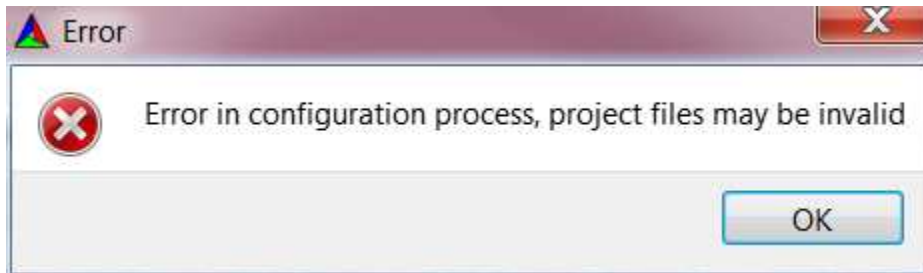


Figure 46. DLP SDK Error

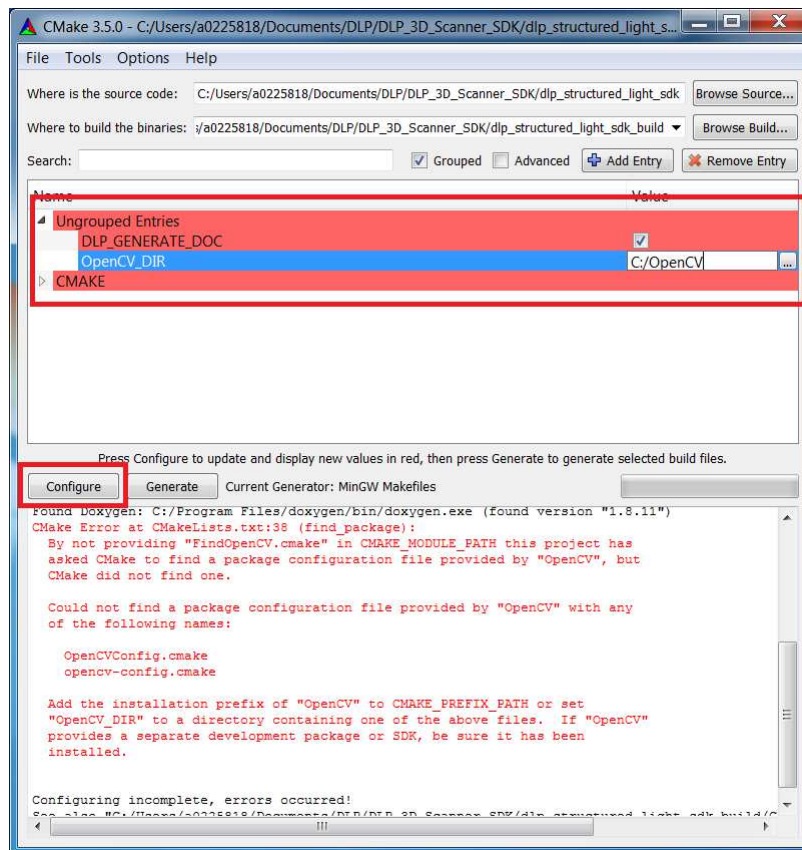


Figure 47. Browse for OpenCV

5. Once configuration is complete, click "Generate." This should be quick and have no errors.
6. As shown in [Figure 48](#) and [Figure 49](#), browse to the location of the built DLP ALC SDK files and type "cmd" in the file path and hit enter.

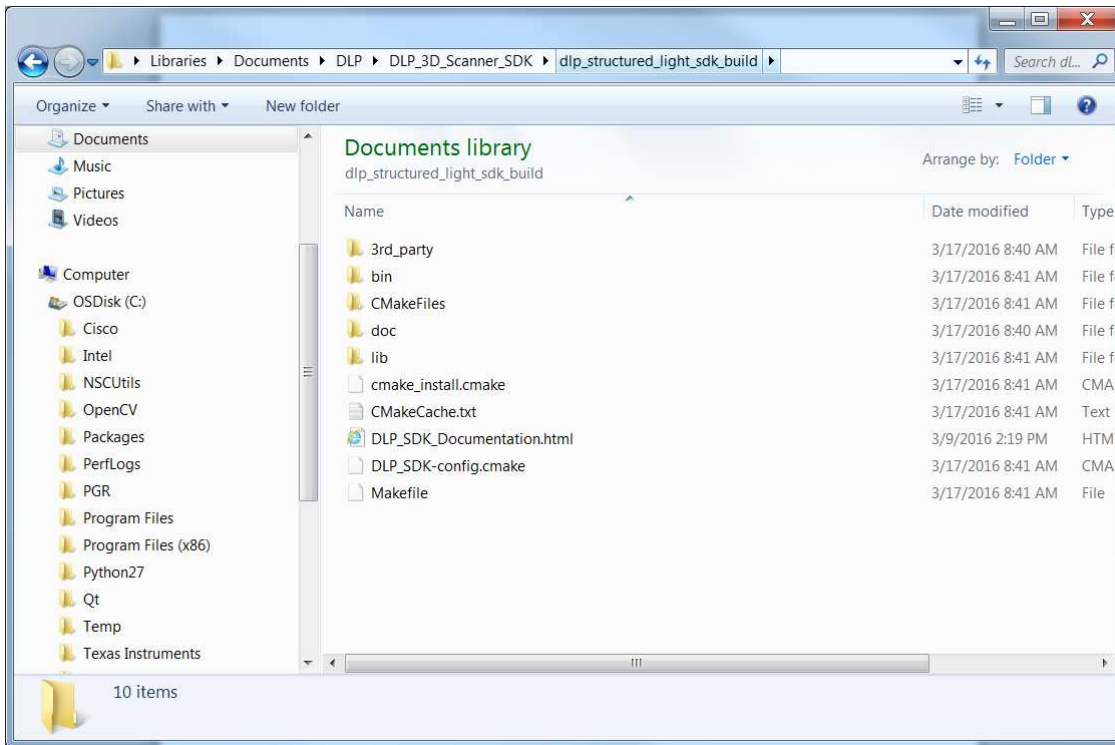


Figure 48. Browse for DLP ALC SDK Built Files

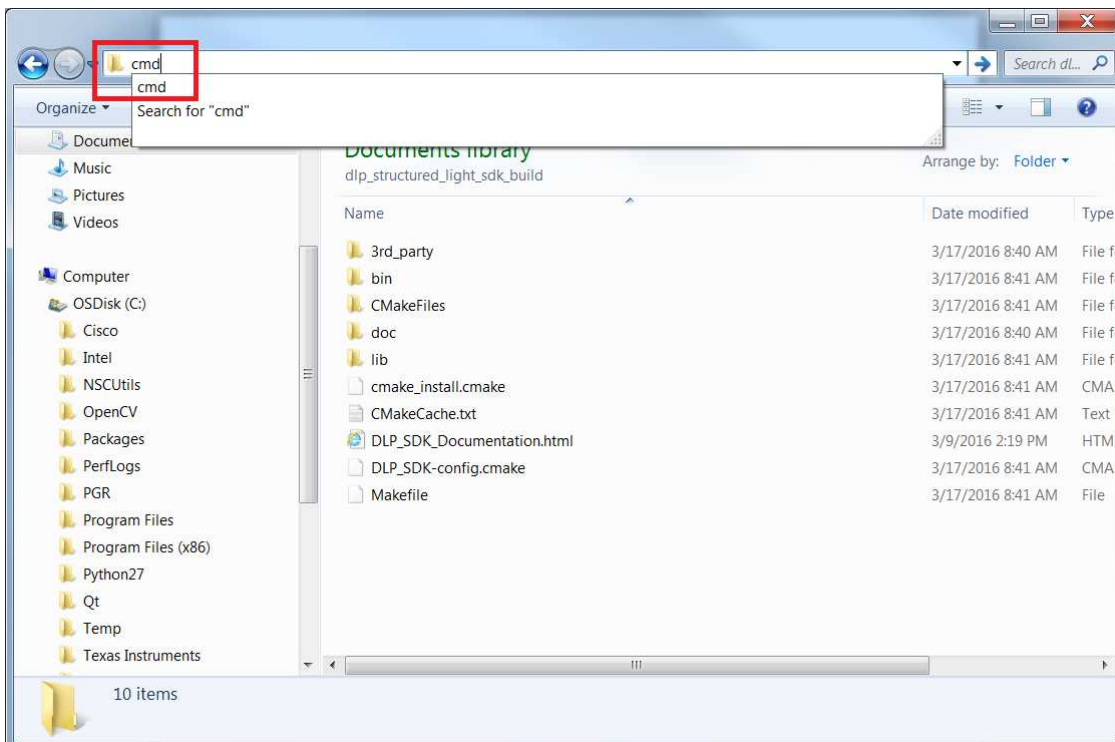


Figure 49. DLP ALC SDK CMD Line

7. Type the command "mingw32-make" as shown in [Figure 50](#).

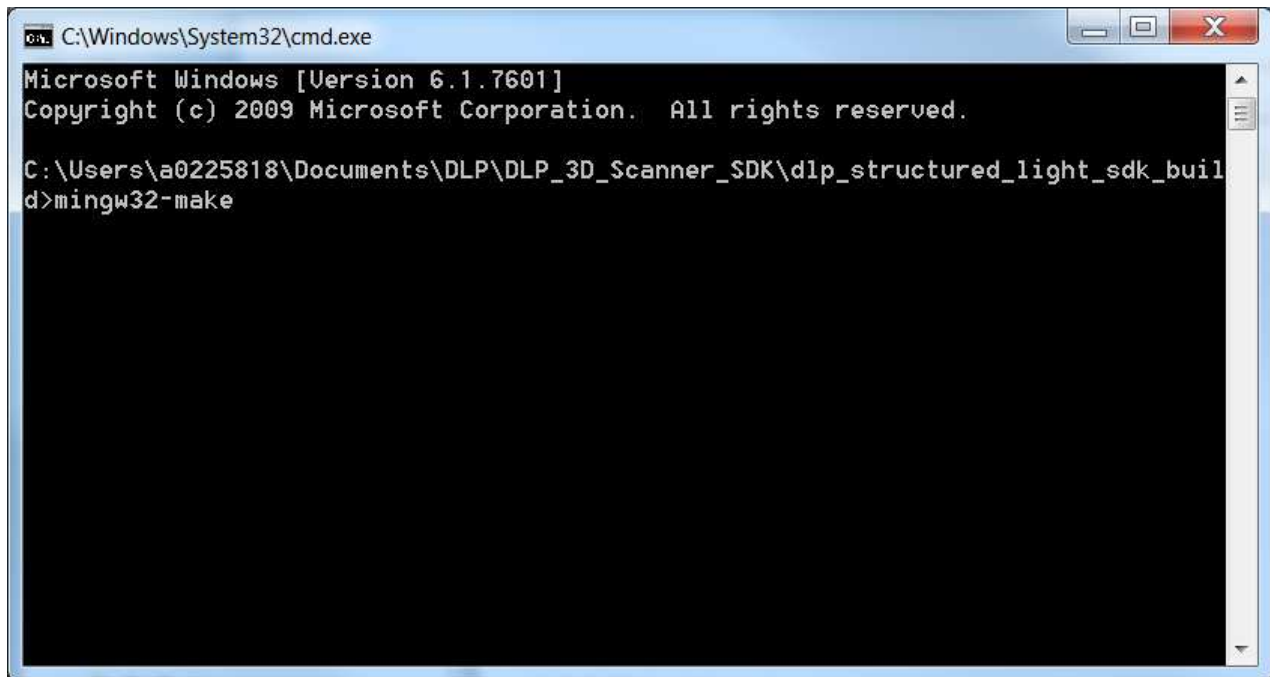


Figure 50. DLP ALC SDK Make

8. Let the command complete. The DLP ALC SDK is now built on the system.
9. To build the documentation for the DLP ALC SDK, in the same command line as [Figure 50](#), type the command "mingw32-make doc". This will utilize Doxygen to create easy to use HTML documentation. Click on the HTML file indicated in [Figure 51](#) to open the top level documentation file (an example path is C:\TexasInstruments-DLP\DLP-ALC-LIGHTCRAFTER-SDK-2.0_bld). [Figure 52](#) shows the welcome page for the compiled documentation.

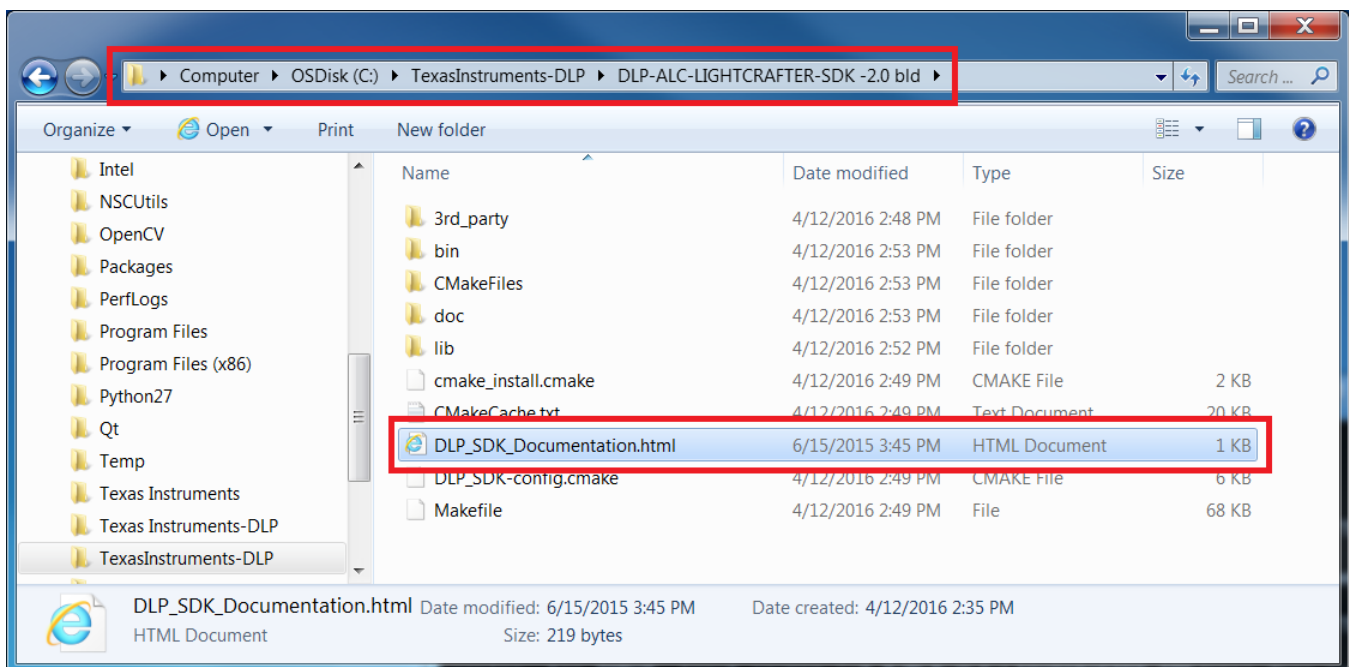


Figure 51. DLP ALC SDK Documentation Location

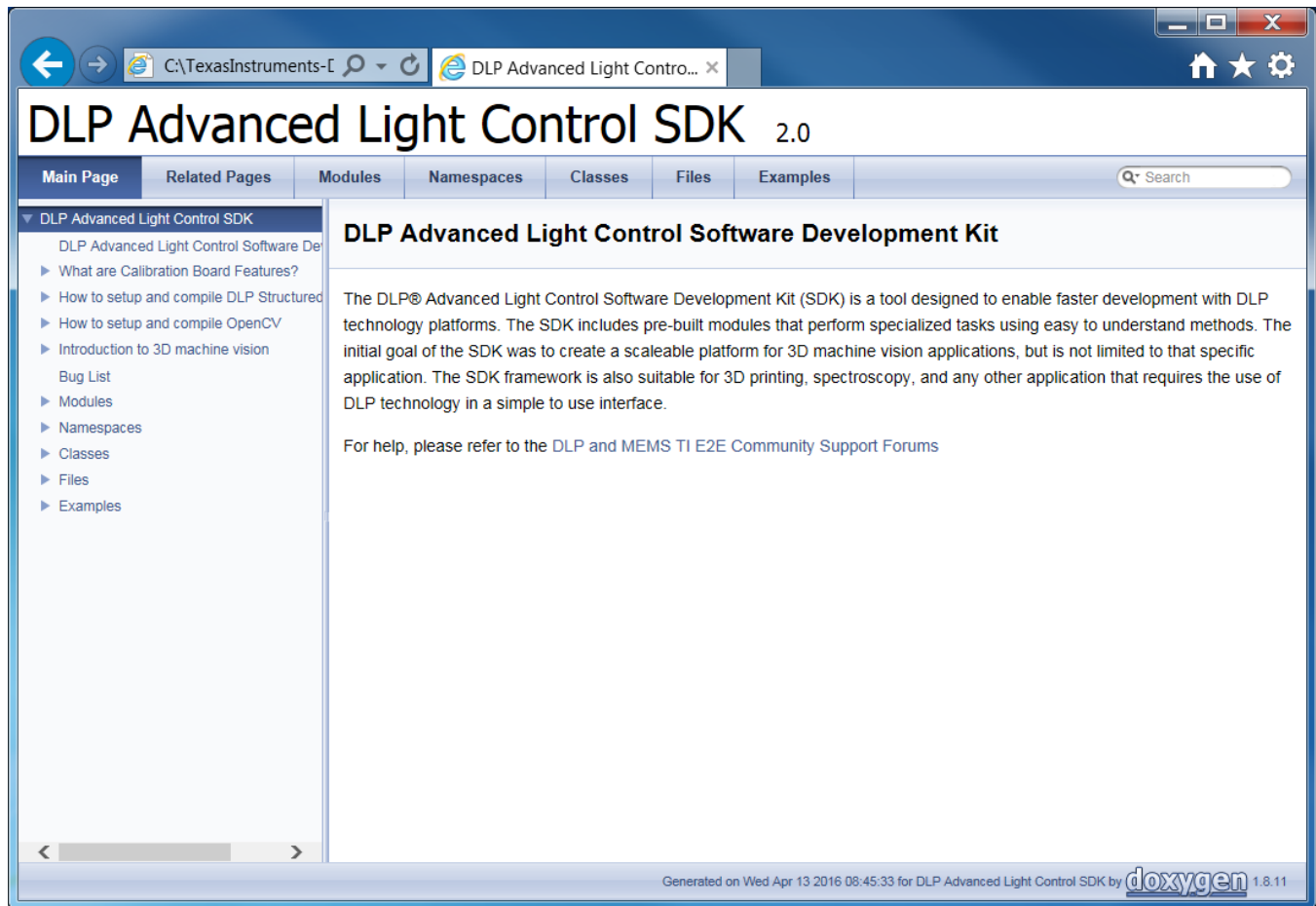


Figure 52. DLP ALC SDK Documentation Home Page

- The installed and built DLP ALC SDK also includes example code for reference. This example code can be found in \bin folder of the built code. An example file path might be: C:\TexasInstruments-DLP\DLP-ALC-LIGHTCRAFTER-SDK-2.0_bld\bin. Once built, the examples are in the form of .exe files and include simple operations such as point cloud viewing, taking a picture, and opening the camera. To run these examples, three DLLs need to be copied into the \bin folder. These DLLs are *libgcc_s_dw2-1.dll*, *libstdc++-6.dll*, and *libwinpthread-1.dll*, and they can be found in C:\Qt\Qt5.3.2\Tools\mingw482_32\bin. Copy them from the folder shown in Figure 53 into the build folder as shown in Figure 54.

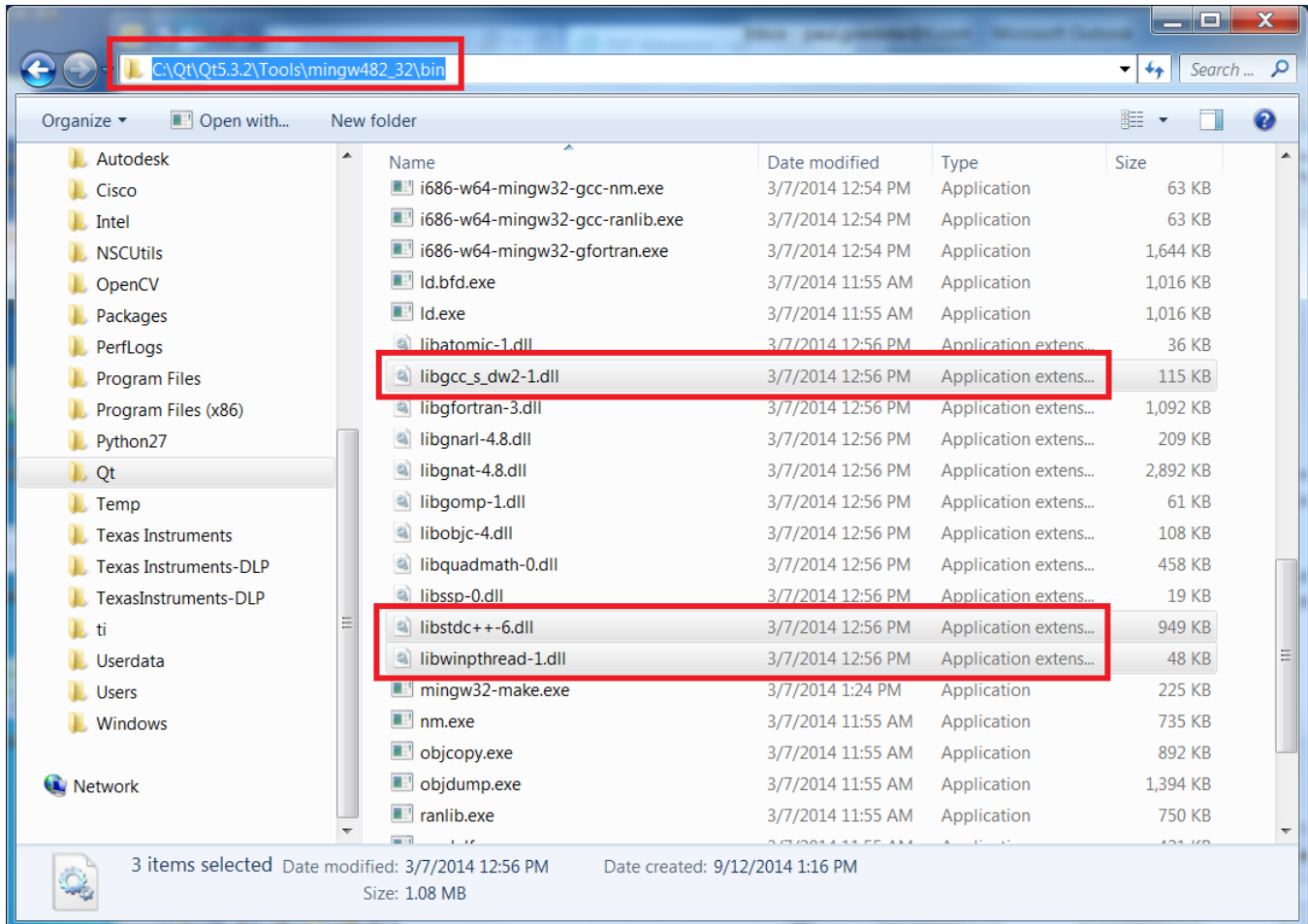


Figure 53. Example Code DLLs to Copy

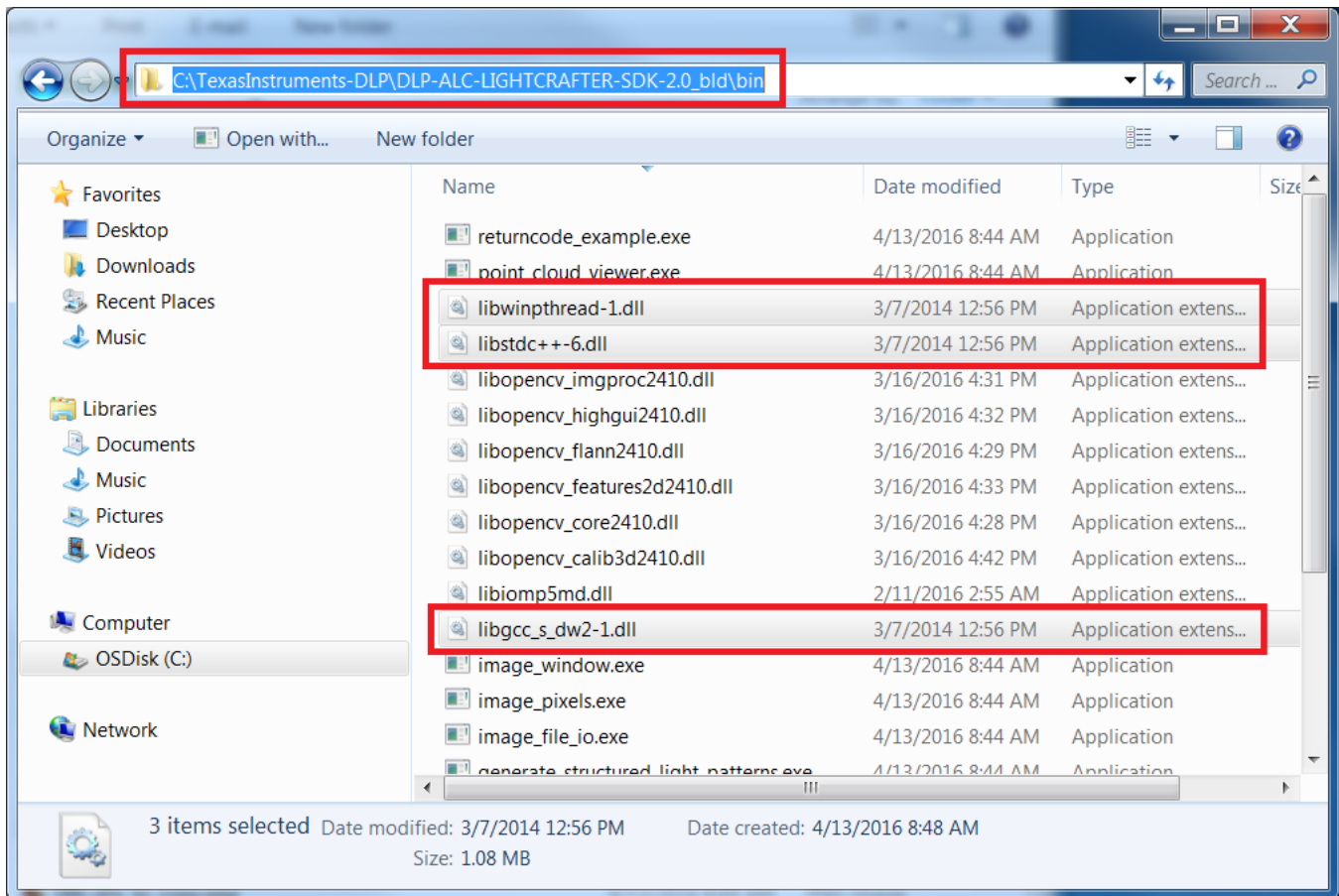


Figure 54. Example Code DLLs Copied Into Correct Folder

9 Compiling the 3D Machine Vision Reference Designs from Source

After the DLP ALC SDK has been compiled and installed, the 3D Machine Vision Reference Design source code can be built for further development activity beyond the binaries provided in the TI Designs. Users can modify the scanning applications to fit their own needs. As with the DLP ALC SDK, the design source code can be configured and compiled with CMake.

1. Open the start menu. Search for and run CMake as shown in [Figure 55](#).

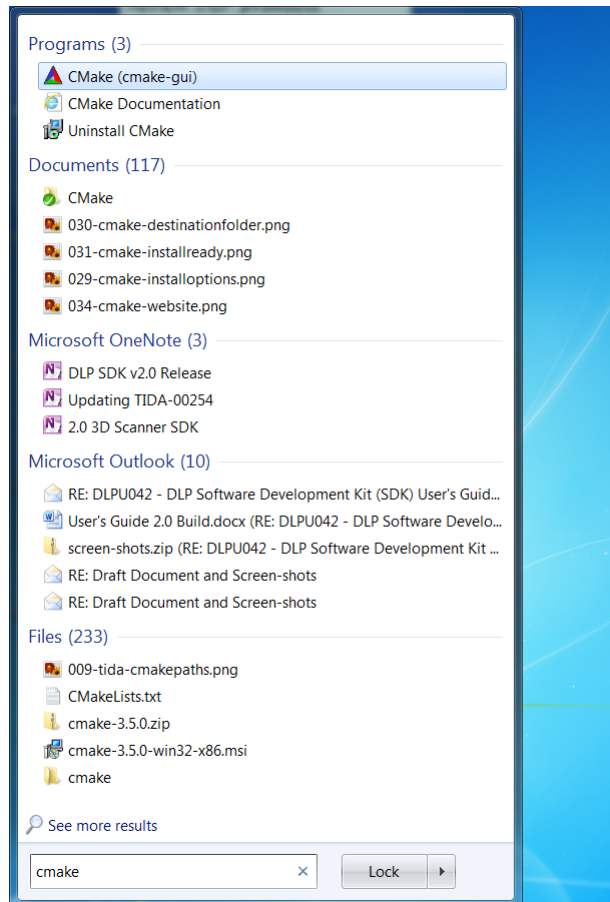


Figure 55. Opening CMake from Start Menu

2. Once CMake is open, browse for the reference design source code and create a new folder for the built source code. The CMake interface should look like [Figure 56](#).

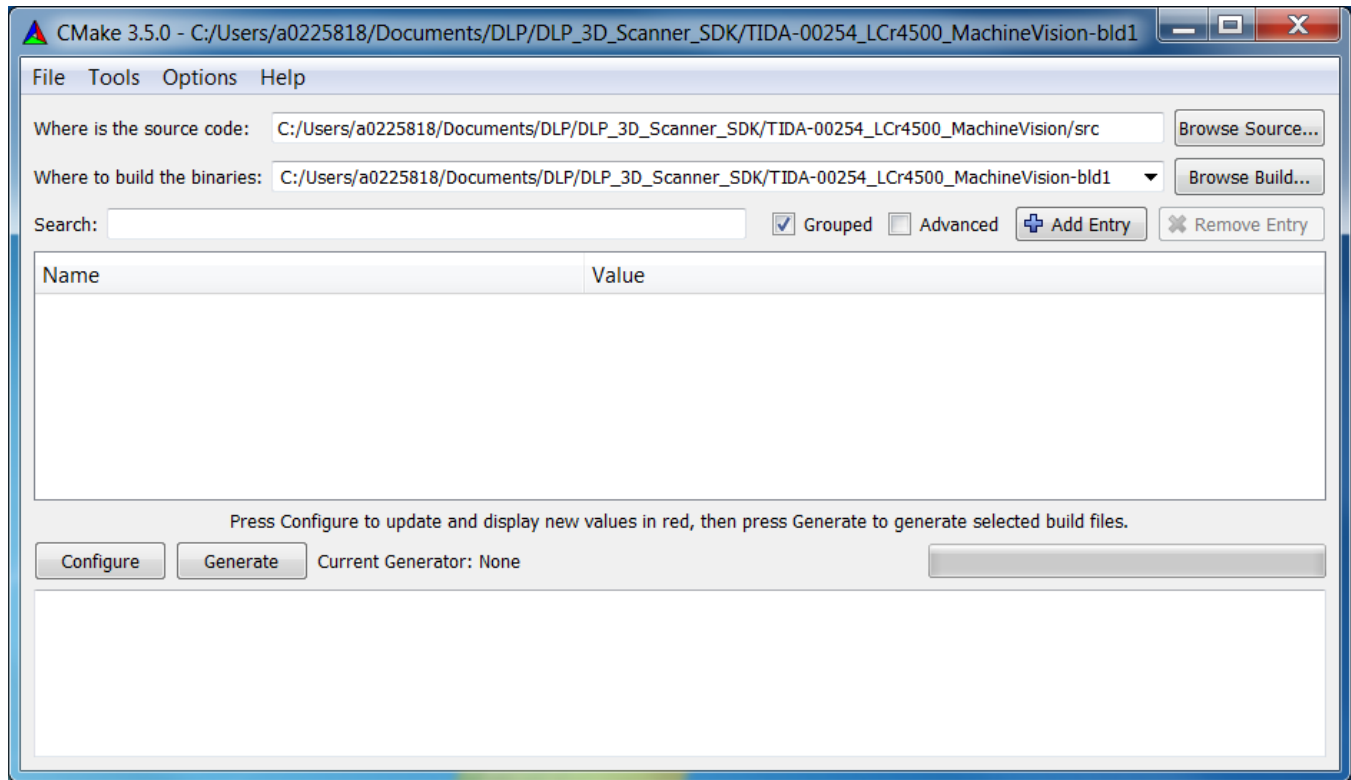


Figure 56. CMake Source and Build File Paths

- Next, click the "Configure" button and make sure that "MinGW Makefiles" is specified as the generator and that the "Use default native compilers" radio button is selected as shown in [Figure 57](#). Click "Finish" to initiate the configuration process.

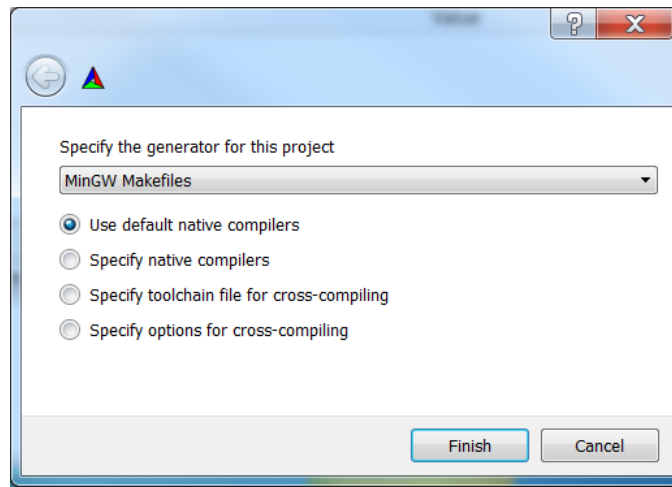


Figure 57. CMake Configuration Options

- There should be no errors upon the completion of this process.
Note: If errors occur, you may have to point CMake to the location OpenCV and the DLP SDK. [Figure 58](#) shows browsing for the path of the DLP SDK. Click "Configure" to continue. [Figure 59](#) shows browsing for OpenCV. Click "Configure" again and there should be no further errors. [Figure 60](#) indicates what CMake will look like once configuration is complete.

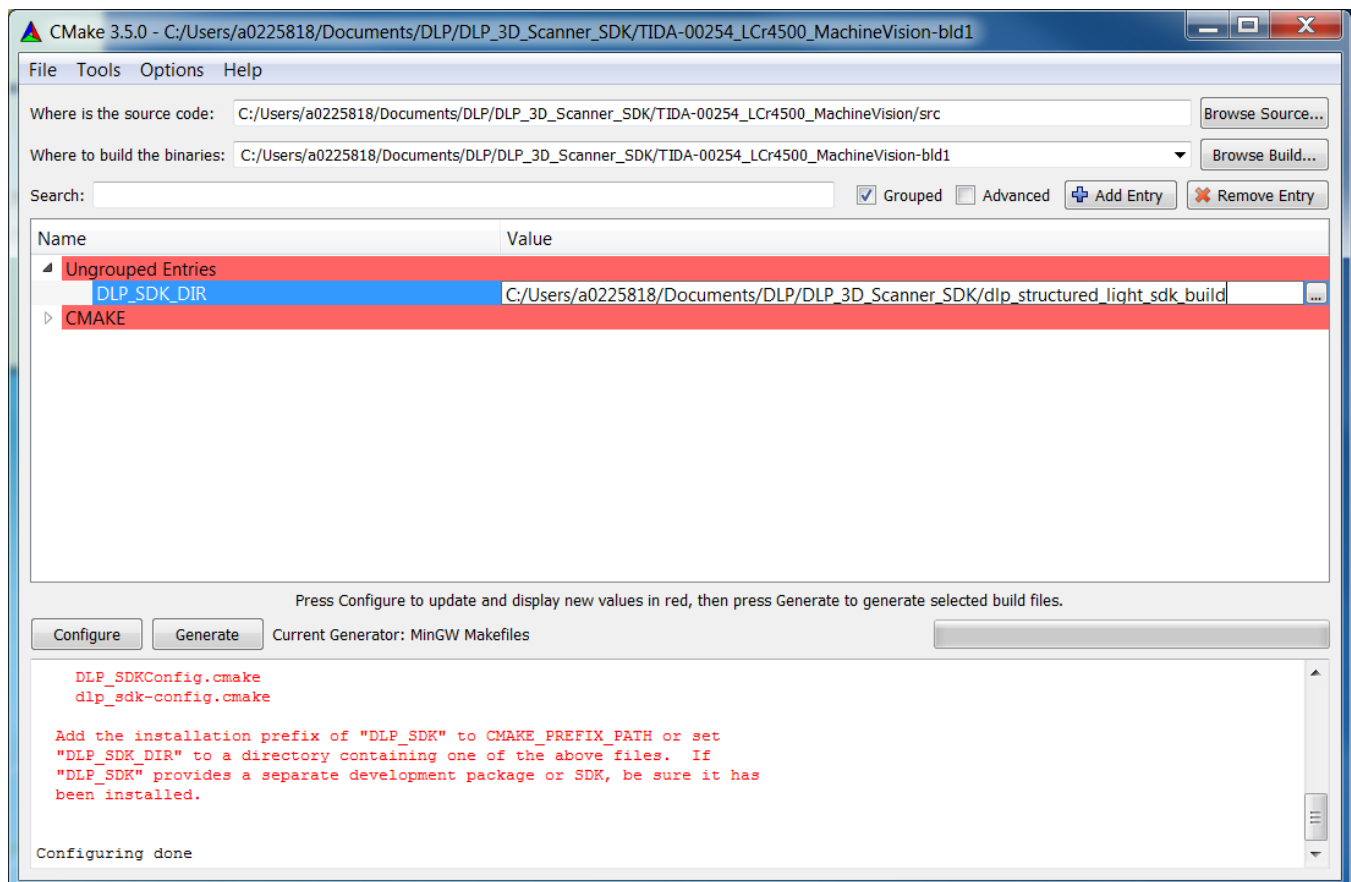


Figure 58. Browsing for DLP SDK

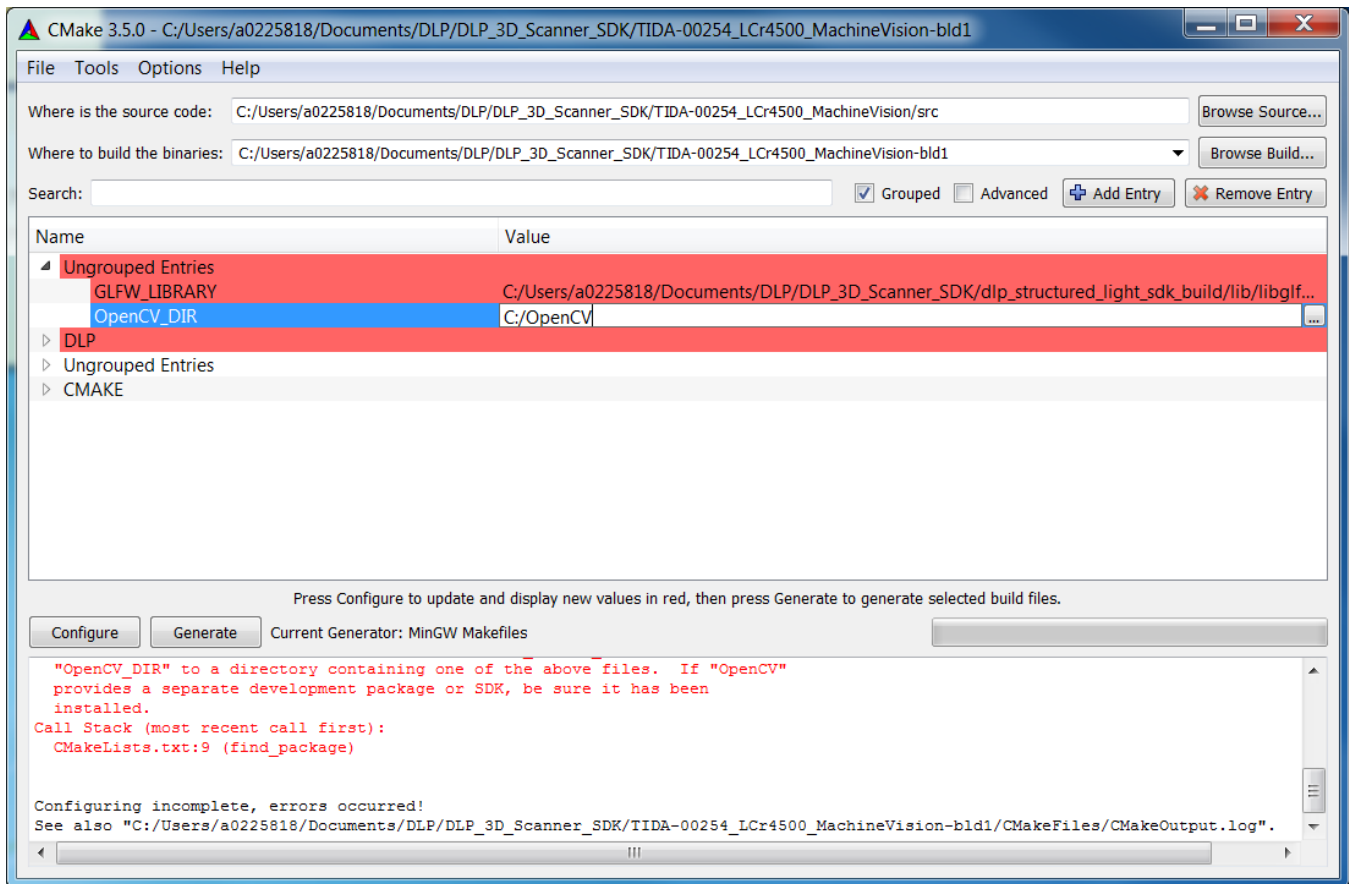


Figure 59. Browsing for OpenCV in CMake

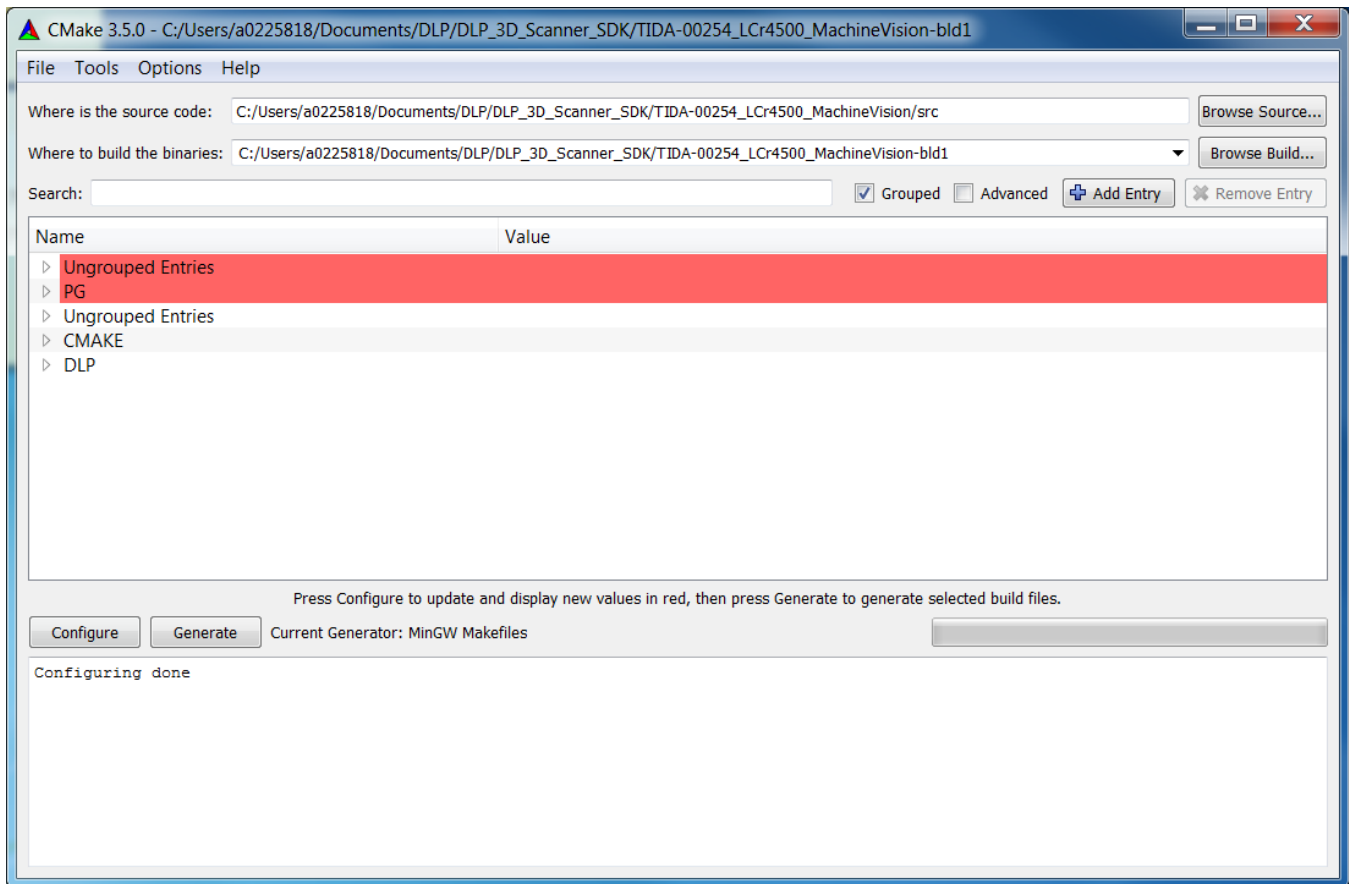


Figure 60. CMake Configure Complete

5. Once the configuration is complete, click "Generate."
6. Open a command line window in the build folder and run the command "mingw32-make" as shown in [Figure 61](#). This will create the executable which can be found in the binary folder as seen in [Figure 62](#).

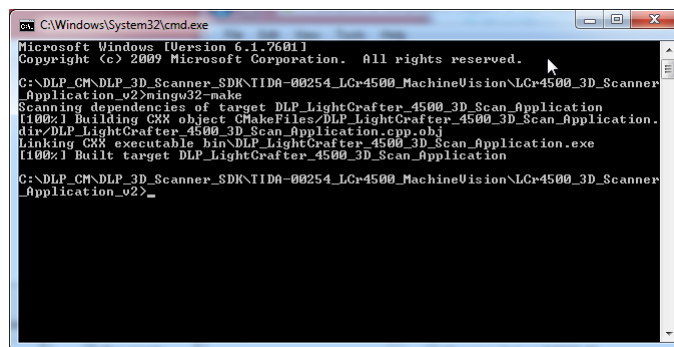


Figure 61. Creating the Executable

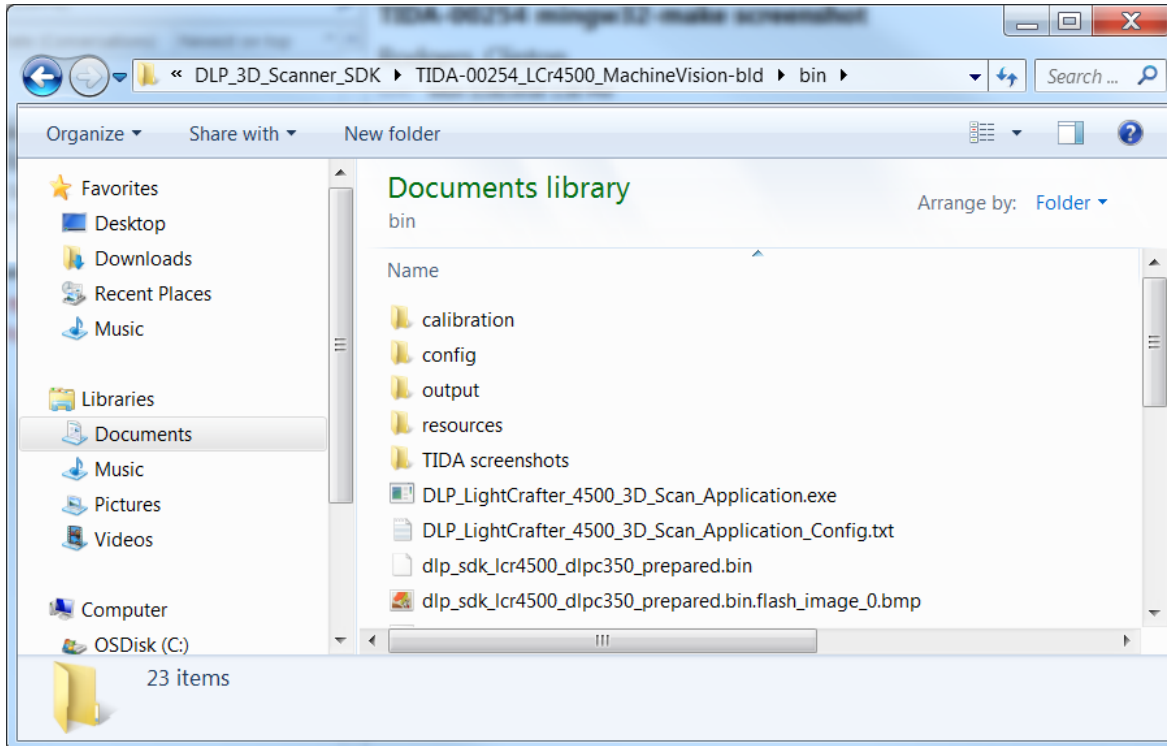


Figure 62. Executable Location

7. Before the TI Design can be run, the DLLs from [Figure 53](#) must be copied into the \bin folder inside the built code folder for the TI Design. An example path is C:\TexasInstruments-DLP\DLP-ALC-LIGHTCRAFTER-SDK-2.0\TIDA-00254_LCr4500_MachineVision_bld\bin.
8. Once the DLLs have been copied, the 3D Scanner program may now be run from the build folder.

10 Conclusion

The required software and source code is now installed and built to properly use the DLP ALC SDK. An example of building the source code for a TI Design has been demonstrated. For specifics on running [TIDA-00254](#), [TIDA-00362](#), and [TIDA-00361](#), please see the user's guides for those designs.

STANDARD TERMS FOR EVALUATION MODULES

1. *Delivery:* TI delivers TI evaluation boards, kits, or modules, including any accompanying demonstration software, components, and/or documentation which may be provided together or separately (collectively, an "EVM" or "EVMs") to the User ("User") in accordance with the terms set forth herein. User's acceptance of the EVM is expressly subject to the following terms.
 - 1.1 EVMs are intended solely for product or software developers for use in a research and development setting to facilitate feasibility evaluation, experimentation, or scientific analysis of TI semiconductor products. EVMs have no direct function and are not finished products. EVMs shall not be directly or indirectly assembled as a part or subassembly in any finished product. For clarification, any software or software tools provided with the EVM ("Software") shall not be subject to the terms and conditions set forth herein but rather shall be subject to the applicable terms that accompany such Software
 - 1.2 EVMs are not intended for consumer or household use. EVMs may not be sold, sublicensed, leased, rented, loaned, assigned, or otherwise distributed for commercial purposes by Users, in whole or in part, or used in any finished product or production system.
2. *Limited Warranty and Related Remedies/Disclaimers:*
 - 2.1 These terms do not apply to Software. The warranty, if any, for Software is covered in the applicable Software License Agreement.
 - 2.2 TI warrants that the TI EVM will conform to TI's published specifications for ninety (90) days after the date TI delivers such EVM to User. Notwithstanding the foregoing, TI shall not be liable for a nonconforming EVM if (a) the nonconformity was caused by neglect, misuse or mistreatment by an entity other than TI, including improper installation or testing, or for any EVMs that have been altered or modified in any way by an entity other than TI, (b) the nonconformity resulted from User's design, specifications or instructions for such EVMs or improper system design, or (c) User has not paid on time. Testing and other quality control techniques are used to the extent TI deems necessary. TI does not test all parameters of each EVM. User's claims against TI under this Section 2 are void if User fails to notify TI of any apparent defects in the EVMs within ten (10) business days after delivery, or of any hidden defects with ten (10) business days after the defect has been detected.
 - 2.3 TI's sole liability shall be at its option to repair or replace EVMs that fail to conform to the warranty set forth above, or credit User's account for such EVM. TI's liability under this warranty shall be limited to EVMs that are returned during the warranty period to the address designated by TI and that are determined by TI not to conform to such warranty. If TI elects to repair or replace such EVM, TI shall have a reasonable time to repair such EVM or provide replacements. Repaired EVMs shall be warranted for the remainder of the original warranty period. Replaced EVMs shall be warranted for a new full ninety (90) day warranty period.

WARNING

Evaluation Kits are intended solely for use by technically qualified, professional electronics experts who are familiar with the dangers and application risks associated with handling electrical mechanical components, systems, and subsystems.

User shall operate the Evaluation Kit within TI's recommended guidelines and any applicable legal or environmental requirements as well as reasonable and customary safeguards. Failure to set up and/or operate the Evaluation Kit within TI's recommended guidelines may result in personal injury or death or property damage. Proper set up entails following TI's instructions for electrical ratings of interface circuits such as input, output and electrical loads.

NOTE:

EXPOSURE TO ELECTROSTATIC DISCHARGE (ESD) MAY CAUSE DEGRADATION OR FAILURE OF THE EVALUATION KIT; TI RECOMMENDS STORAGE OF THE EVALUATION KIT IN A PROTECTIVE ESD BAG.

3 Regulatory Notices:

3.1 United States

3.1.1 Notice applicable to EVMs not FCC-Approved:

FCC NOTICE: This kit is designed to allow product developers to evaluate electronic components, circuitry, or software associated with the kit to determine whether to incorporate such items in a finished product and software developers to write software applications for use with the end product. This kit is not a finished product and when assembled may not be resold or otherwise marketed unless all required FCC equipment authorizations are first obtained. Operation is subject to the condition that this product not cause harmful interference to licensed radio stations and that this product accept harmful interference. Unless the assembled kit is designed to operate under part 15, part 18 or part 95 of this chapter, the operator of the kit must operate under the authority of an FCC license holder or must secure an experimental authorization under part 5 of this chapter.

3.1.2 For EVMs annotated as FCC – FEDERAL COMMUNICATIONS COMMISSION Part 15 Compliant:

CAUTION

This device complies with part 15 of the FCC Rules. Operation is subject to the following two conditions: (1) This device may not cause harmful interference, and (2) this device must accept any interference received, including interference that may cause undesired operation.

Changes or modifications not expressly approved by the party responsible for compliance could void the user's authority to operate the equipment.

FCC Interference Statement for Class A EVM devices

NOTE: This equipment has been tested and found to comply with the limits for a Class A digital device, pursuant to part 15 of the FCC Rules. These limits are designed to provide reasonable protection against harmful interference when the equipment is operated in a commercial environment. This equipment generates, uses, and can radiate radio frequency energy and, if not installed and used in accordance with the instruction manual, may cause harmful interference to radio communications. Operation of this equipment in a residential area is likely to cause harmful interference in which case the user will be required to correct the interference at his own expense.

FCC Interference Statement for Class B EVM devices

NOTE: This equipment has been tested and found to comply with the limits for a Class B digital device, pursuant to part 15 of the FCC Rules. These limits are designed to provide reasonable protection against harmful interference in a residential installation. This equipment generates, uses and can radiate radio frequency energy and, if not installed and used in accordance with the instructions, may cause harmful interference to radio communications. However, there is no guarantee that interference will not occur in a particular installation. If this equipment does cause harmful interference to radio or television reception, which can be determined by turning the equipment off and on, the user is encouraged to try to correct the interference by one or more of the following measures:

- Reorient or relocate the receiving antenna.
- Increase the separation between the equipment and receiver.
- Connect the equipment into an outlet on a circuit different from that to which the receiver is connected.
- Consult the dealer or an experienced radio/TV technician for help.

3.2 Canada

3.2.1 For EVMs issued with an Industry Canada Certificate of Conformance to RSS-210 or RSS-247

Concerning EVMs Including Radio Transmitters:

This device complies with Industry Canada license-exempt RSSs. Operation is subject to the following two conditions:

(1) this device may not cause interference, and (2) this device must accept any interference, including interference that may cause undesired operation of the device.

Concernant les EVMs avec appareils radio:

Le présent appareil est conforme aux CNR d'Industrie Canada applicables aux appareils radio exempts de licence. L'exploitation est autorisée aux deux conditions suivantes: (1) l'appareil ne doit pas produire de brouillage, et (2) l'utilisateur de l'appareil doit accepter tout brouillage radioélectrique subi, même si le brouillage est susceptible d'en compromettre le fonctionnement.

Concerning EVMs Including Detachable Antennas:

Under Industry Canada regulations, this radio transmitter may only operate using an antenna of a type and maximum (or lesser) gain approved for the transmitter by Industry Canada. To reduce potential radio interference to other users, the antenna type and its gain should be so chosen that the equivalent isotropically radiated power (e.i.r.p.) is not more than that necessary for successful communication. This radio transmitter has been approved by Industry Canada to operate with the antenna types listed in the user guide with the maximum permissible gain and required antenna impedance for each antenna type indicated. Antenna types not included in this list, having a gain greater than the maximum gain indicated for that type, are strictly prohibited for use with this device.

Concernant les EVMs avec antennes détachables

Conformément à la réglementation d'Industrie Canada, le présent émetteur radio peut fonctionner avec une antenne d'un type et d'un gain maximal (ou inférieur) approuvé pour l'émetteur par Industrie Canada. Dans le but de réduire les risques de brouillage radioélectrique à l'intention des autres utilisateurs, il faut choisir le type d'antenne et son gain de sorte que la puissance isotrope rayonnée équivalente (p.i.r.e.) ne dépasse pas l'intensité nécessaire à l'établissement d'une communication satisfaisante. Le présent émetteur radio a été approuvé par Industrie Canada pour fonctionner avec les types d'antenne énumérés dans le manuel d'usage et ayant un gain admissible maximal et l'impédance requise pour chaque type d'antenne. Les types d'antenne non inclus dans cette liste, ou dont le gain est supérieur au gain maximal indiqué, sont strictement interdits pour l'exploitation de l'émetteur.

3.3 Japan

3.3.1 *Notice for EVMs delivered in Japan:* Please see http://www.tij.co.jp/lstds/ti_ja/general/eStore/notice_01.page 日本国内に輸入される評価用キット、ボードについては、次のところをご覧ください。

<https://www.ti.com/ja-jp/legal/notice-for-evaluation-kits-delivered-in-japan.html>

3.3.2 *Notice for Users of EVMs Considered "Radio Frequency Products" in Japan:* EVMs entering Japan may not be certified by TI as conforming to Technical Regulations of Radio Law of Japan.

If User uses EVMs in Japan, not certified to Technical Regulations of Radio Law of Japan, User is required to follow the instructions set forth by Radio Law of Japan, which includes, but is not limited to, the instructions below with respect to EVMs (which for the avoidance of doubt are stated strictly for convenience and should be verified by User):

1. Use EVMs in a shielded room or any other test facility as defined in the notification #173 issued by Ministry of Internal Affairs and Communications on March 28, 2006, based on Sub-section 1.1 of Article 6 of the Ministry's Rule for Enforcement of Radio Law of Japan,
2. Use EVMs only after User obtains the license of Test Radio Station as provided in Radio Law of Japan with respect to EVMs, or
3. Use of EVMs only after User obtains the Technical Regulations Conformity Certification as provided in Radio Law of Japan with respect to EVMs. Also, do not transfer EVMs, unless User gives the same notice above to the transferee. Please note that if User does not follow the instructions above, User will be subject to penalties of Radio Law of Japan.

【無線電波を送信する製品の開発キットをお使いになる際の注意事項】 開発キットの中には技術基準適合証明を受けていないものがあります。技術適合証明を受けていないものご使用に際しては、電波法遵守のため、以下のいずれかの措置を取っていただく必要がありますのでご注意ください。

1. 電波法施行規則第6条第1項第1号に基づく平成18年3月28日総務省告示第173号で定められた電波暗室等の試験設備でご使用いただく。
2. 実験局の免許を取得後ご使用いただく。
3. 技術基準適合証明を取得後ご使用いただく。

なお、本製品は、上記の「ご使用にあたっての注意」を譲渡先、移転先に通知しない限り、譲渡、移転できないものとします。

上記を遵守頂けない場合は、電波法の罰則が適用される可能性があることをご留意ください。日本テキサス・イ

ンスツルメンツ株式会社

東京都新宿区西新宿 6 丁目 2 4 番 1 号

西新宿三井ビル

3.3.3 *Notice for EVMs for Power Line Communication:* Please see http://www.tij.co.jp/lstds/ti_ja/general/eStore/notice_02.page

電力線搬送波通信についての開発キットをお使いになる際の注意事項については、次のところをご覧ください。 <https://www.ti.com/ja-jp/legal/notice-for-evaluation-kits-for-power-line-communication.html>

3.4 European Union

3.4.1 *For EVMs subject to EU Directive 2014/30/EU (Electromagnetic Compatibility Directive):*

This is a class A product intended for use in environments other than domestic environments that are connected to a low-voltage power-supply network that supplies buildings used for domestic purposes. In a domestic environment this product may cause radio interference in which case the user may be required to take adequate measures.

-
- 4 *EVM Use Restrictions and Warnings:*
 - 4.1 EVMS ARE NOT FOR USE IN FUNCTIONAL SAFETY AND/OR SAFETY CRITICAL EVALUATIONS, INCLUDING BUT NOT LIMITED TO EVALUATIONS OF LIFE SUPPORT APPLICATIONS.
 - 4.2 User must read and apply the user guide and other available documentation provided by TI regarding the EVM prior to handling or using the EVM, including without limitation any warning or restriction notices. The notices contain important safety information related to, for example, temperatures and voltages.
 - 4.3 *Safety-Related Warnings and Restrictions:*
 - 4.3.1 User shall operate the EVM within TI's recommended specifications and environmental considerations stated in the user guide, other available documentation provided by TI, and any other applicable requirements and employ reasonable and customary safeguards. Exceeding the specified performance ratings and specifications (including but not limited to input and output voltage, current, power, and environmental ranges) for the EVM may cause personal injury or death, or property damage. If there are questions concerning performance ratings and specifications, User should contact a TI field representative prior to connecting interface electronics including input power and intended loads. Any loads applied outside of the specified output range may also result in unintended and/or inaccurate operation and/or possible permanent damage to the EVM and/or interface electronics. Please consult the EVM user guide prior to connecting any load to the EVM output. If there is uncertainty as to the load specification, please contact a TI field representative. During normal operation, even with the inputs and outputs kept within the specified allowable ranges, some circuit components may have elevated case temperatures. These components include but are not limited to linear regulators, switching transistors, pass transistors, current sense resistors, and heat sinks, which can be identified using the information in the associated documentation. When working with the EVM, please be aware that the EVM may become very warm.
 - 4.3.2 EVMs are intended solely for use by technically qualified, professional electronics experts who are familiar with the dangers and application risks associated with handling electrical mechanical components, systems, and subsystems. User assumes all responsibility and liability for proper and safe handling and use of the EVM by User or its employees, affiliates, contractors or designees. User assumes all responsibility and liability to ensure that any interfaces (electronic and/or mechanical) between the EVM and any human body are designed with suitable isolation and means to safely limit accessible leakage currents to minimize the risk of electrical shock hazard. User assumes all responsibility and liability for any improper or unsafe handling or use of the EVM by User or its employees, affiliates, contractors or designees.
 - 4.4 User assumes all responsibility and liability to determine whether the EVM is subject to any applicable international, federal, state, or local laws and regulations related to User's handling and use of the EVM and, if applicable, User assumes all responsibility and liability for compliance in all respects with such laws and regulations. User assumes all responsibility and liability for proper disposal and recycling of the EVM consistent with all applicable international, federal, state, and local requirements.
 5. *Accuracy of Information:* To the extent TI provides information on the availability and function of EVMs, TI attempts to be as accurate as possible. However, TI does not warrant the accuracy of EVM descriptions, EVM availability or other information on its websites as accurate, complete, reliable, current, or error-free.
 6. *Disclaimers:*
 - 6.1 EXCEPT AS SET FORTH ABOVE, EVMS AND ANY MATERIALS PROVIDED WITH THE EVM (INCLUDING, BUT NOT LIMITED TO, REFERENCE DESIGNS AND THE DESIGN OF THE EVM ITSELF) ARE PROVIDED "AS IS" AND "WITH ALL FAULTS." TI DISCLAIMS ALL OTHER WARRANTIES, EXPRESS OR IMPLIED, REGARDING SUCH ITEMS, INCLUDING BUT NOT LIMITED TO ANY EPIDEMIC FAILURE WARRANTY OR IMPLIED WARRANTIES OF MERCHANTABILITY OR FITNESS FOR A PARTICULAR PURPOSE OR NON-INFRINGEMENT OF ANY THIRD PARTY PATENTS, COPYRIGHTS, TRADE SECRETS OR OTHER INTELLECTUAL PROPERTY RIGHTS.
 - 6.2 EXCEPT FOR THE LIMITED RIGHT TO USE THE EVM SET FORTH HEREIN, NOTHING IN THESE TERMS SHALL BE CONSTRUED AS GRANTING OR CONFERRING ANY RIGHTS BY LICENSE, PATENT, OR ANY OTHER INDUSTRIAL OR INTELLECTUAL PROPERTY RIGHT OF TI, ITS SUPPLIERS/LICENSORS OR ANY OTHER THIRD PARTY, TO USE THE EVM IN ANY FINISHED END-USER OR READY-TO-USE FINAL PRODUCT, OR FOR ANY INVENTION, DISCOVERY OR IMPROVEMENT, REGARDLESS OF WHEN MADE, CONCEIVED OR ACQUIRED.
 7. *USER'S INDEMNITY OBLIGATIONS AND REPRESENTATIONS.* USER WILL DEFEND, INDEMNIFY AND HOLD TI, ITS LICENSORS AND THEIR REPRESENTATIVES HARMLESS FROM AND AGAINST ANY AND ALL CLAIMS, DAMAGES, LOSSES, EXPENSES, COSTS AND LIABILITIES (COLLECTIVELY, "CLAIMS") ARISING OUT OF OR IN CONNECTION WITH ANY HANDLING OR USE OF THE EVM THAT IS NOT IN ACCORDANCE WITH THESE TERMS. THIS OBLIGATION SHALL APPLY WHETHER CLAIMS ARISE UNDER STATUTE, REGULATION, OR THE LAW OF TORT, CONTRACT OR ANY OTHER LEGAL THEORY, AND EVEN IF THE EVM FAILS TO PERFORM AS DESCRIBED OR EXPECTED.

8. *Limitations on Damages and Liability:*

8.1 *General Limitations.* IN NO EVENT SHALL TI BE LIABLE FOR ANY SPECIAL, COLLATERAL, INDIRECT, PUNITIVE, INCIDENTAL, CONSEQUENTIAL, OR EXEMPLARY DAMAGES IN CONNECTION WITH OR ARISING OUT OF THESE TERMS OR THE USE OF THE EVMS , REGARDLESS OF WHETHER TI HAS BEEN ADVISED OF THE POSSIBILITY OF SUCH DAMAGES. EXCLUDED DAMAGES INCLUDE, BUT ARE NOT LIMITED TO, COST OF REMOVAL OR REINSTALLATION, ANCILLARY COSTS TO THE PROCUREMENT OF SUBSTITUTE GOODS OR SERVICES, RETESTING, OUTSIDE COMPUTER TIME, LABOR COSTS, LOSS OF GOODWILL, LOSS OF PROFITS, LOSS OF SAVINGS, LOSS OF USE, LOSS OF DATA, OR BUSINESS INTERRUPTION. NO CLAIM, SUIT OR ACTION SHALL BE BROUGHT AGAINST TI MORE THAN TWELVE (12) MONTHS AFTER THE EVENT THAT GAVE RISE TO THE CAUSE OF ACTION HAS OCCURRED.

8.2 *Specific Limitations.* IN NO EVENT SHALL TI'S AGGREGATE LIABILITY FROM ANY USE OF AN EVM PROVIDED HEREUNDER, INCLUDING FROM ANY WARRANTY, INDEMNITY OR OTHER OBLIGATION ARISING OUT OF OR IN CONNECTION WITH THESE TERMS, , EXCEED THE TOTAL AMOUNT PAID TO TI BY USER FOR THE PARTICULAR EVM(S) AT ISSUE DURING THE PRIOR TWELVE (12) MONTHS WITH RESPECT TO WHICH LOSSES OR DAMAGES ARE CLAIMED. THE EXISTENCE OF MORE THAN ONE CLAIM SHALL NOT ENLARGE OR EXTEND THIS LIMIT.

9. *Return Policy.* Except as otherwise provided, TI does not offer any refunds, returns, or exchanges. Furthermore, no return of EVM(s) will be accepted if the package has been opened and no return of the EVM(s) will be accepted if they are damaged or otherwise not in a resalable condition. If User feels it has been incorrectly charged for the EVM(s) it ordered or that delivery violates the applicable order, User should contact TI. All refunds will be made in full within thirty (30) working days from the return of the components(s), excluding any postage or packaging costs.

10. *Governing Law:* These terms and conditions shall be governed by and interpreted in accordance with the laws of the State of Texas, without reference to conflict-of-laws principles. User agrees that non-exclusive jurisdiction for any dispute arising out of or relating to these terms and conditions lies within courts located in the State of Texas and consents to venue in Dallas County, Texas. Notwithstanding the foregoing, any judgment may be enforced in any United States or foreign court, and TI may seek injunctive relief in any United States or foreign court.

Mailing Address: Texas Instruments, Post Office Box 655303, Dallas, Texas 75265
Copyright © 2023, Texas Instruments Incorporated

IMPORTANT NOTICE AND DISCLAIMER

TI PROVIDES TECHNICAL AND RELIABILITY DATA (INCLUDING DATASHEETS), DESIGN RESOURCES (INCLUDING REFERENCE DESIGNS), APPLICATION OR OTHER DESIGN ADVICE, WEB TOOLS, SAFETY INFORMATION, AND OTHER RESOURCES "AS IS" AND WITH ALL FAULTS, AND DISCLAIMS ALL WARRANTIES, EXPRESS AND IMPLIED, INCLUDING WITHOUT LIMITATION ANY IMPLIED WARRANTIES OF MERCHANTABILITY, FITNESS FOR A PARTICULAR PURPOSE OR NON-INFRINGEMENT OF THIRD PARTY INTELLECTUAL PROPERTY RIGHTS.

These resources are intended for skilled developers designing with TI products. You are solely responsible for (1) selecting the appropriate TI products for your application, (2) designing, validating and testing your application, and (3) ensuring your application meets applicable standards, and any other safety, security, regulatory or other requirements.

These resources are subject to change without notice. TI grants you permission to use these resources only for development of an application that uses the TI products described in the resource. Other reproduction and display of these resources is prohibited. No license is granted to any other TI intellectual property right or to any third party intellectual property right. TI disclaims responsibility for, and you fully indemnify TI and its representatives against any claims, damages, costs, losses, and liabilities arising out of your use of these resources.

TI's products are provided subject to [TI's Terms of Sale](#), [TI's General Quality Guidelines](#), or other applicable terms available either on [ti.com](#) or provided in conjunction with such TI products. TI's provision of these resources does not expand or otherwise alter TI's applicable warranties or warranty disclaimers for TI products. Unless TI explicitly designates a product as custom or customer-specified, TI products are standard, catalog, general purpose devices.

TI objects to and rejects any additional or different terms you may propose.

Copyright © 2026, Texas Instruments Incorporated

Last updated 10/2025