

bq40z50EVM Li-Ion Battery Pack Manager Evaluation Module



Tom Cosby
Roger Hwang

ABSTRACT

This evaluation module (EVM) is a complete evaluation system for the bq40z50 or bq296000 battery management system. The EVM includes one bq40z50 and bq296000 circuit module and a link to Microsoft® Windows® based PC software. The circuit module includes one bq40z50 integrated circuit (IC), one bq296000 IC, and all other onboard components necessary to monitor and predict capacity, perform cell balancing, monitor critical parameters, protect the cells from overcharge, over-discharge, short-circuit, and overcurrent in 1-, 2-, 3-, or 4-series cell Li-ion or Li-polymer battery packs. The circuit module connects directly across the cells in a battery. With the EV2300 or EV2400 interface board and software, the user can read the bq40z50 data registers, program the chipset for different pack configurations, log cycling data for further evaluation, and evaluate the overall functionality of the solution under different charge and discharge conditions.

Table of Contents

1 Features	2
1.1 Kit Contents.....	2
1.2 Ordering Information.....	2
1.3 Documentation.....	2
1.4 bq40z50 and bq296000 Circuit Module Performance Specification Summary.....	2
2 bq40z50EVM Quick Start Guide	3
2.1 Items Needed for EVM Setup and Evaluation.....	3
2.2 Software Installation.....	3
2.3 EVM Connections.....	4
2.4 Update Firmware.....	5
3 Battery Management Studio	6
3.1 Registers Screen.....	6
3.2 Setting Programmable bq40z50 Options.....	6
3.3 Calibration Screen.....	7
3.4 Chemistry Screen.....	9
3.5 Firmware Screen.....	10
3.6 Advanced Comm SMB Screen.....	11
4 bq40z50EVM Circuit Module Schematic	12
4.1 Pre-Charge.....	12
4.2 LED Control.....	12
4.3 Emergency Shutdown.....	12
4.4 Testing Fuse-Blowing Circuit.....	12
4.5 PTC Thermistor.....	13
5 Circuit Module Physical Layouts	13
5.1 Board Layout.....	13
5.2 Schematic.....	16
6 Bill of Materials	17
7 Related Documentation from Texas Instruments	18
8 Revision History	18

List of Figures

Figure 2-1. bq40z50 Circuit Module Connection to Cells and System Load or Charger.....	4
Figure 2-2. Cell Connection Configuration.....	4
Figure 3-1. Registers Screen.....	6
Figure 3-2. Data Flash Screen.....	7
Figure 3-3. Calibration Screen.....	7
Figure 3-4. Chemistry Screen.....	9
Figure 3-5. Firmware Screen.....	10
Figure 3-6. Advanced Comm Screen.....	11
Figure 4-1. Fuse Trace Modifications.....	12
Figure 5-1. Top Silk Screen.....	13
Figure 5-2. Bottom Silk Screen.....	13
Figure 5-3. Top Assembly.....	14
Figure 5-4. Bottom Assembly.....	14
Figure 5-5. Top Layer.....	14
Figure 5-6. Internal Layer 1.....	15
Figure 5-7. Internal Layer 2.....	15
Figure 5-8. Bottom Layer.....	15

Trademarks

Impedance Track™ is a trademark of TI.

Microsoft® and Windows® are registered trademarks of Microsoft Corporation.

All trademarks are the property of their respective owners.

1 Features

- Complete evaluation system for the bq40z50EVM Li-Ion Battery Pack Manager Evaluation Module and bq296000 independent overvoltage protection IC
- Populated circuit module for quick setup
- Software that allows data logging for system analysis

1.1 Kit Contents

- bq40z50 and bq296000 circuit module
- Cable to connect the EVM to an EV2300 or EV2400 communications interface adapter

1.2 Ordering Information

For complete ordering information, see the product page at www.ti.com.

Table 1-1. Ordering Information

EVM PART NUMBER	CHEMISTRY	CONFIGURATION	CAPACITY
bq40z50EVM-561	Li-ion	1-, 2-, 3-, or 4-cell	Any

1.3 Documentation

See the device data sheets for [bq40z50](#) and [bq296000](#) and technical reference manuals (TRMs) on www.ti.com for information on device firmware and hardware.

1.4 bq40z50 and bq296000 Circuit Module Performance Specification Summary

This section summarizes the performance specifications of the bq40z50 and bq296000 EVM.

Table 1-2. Performance Specification Summary

Specification	Minimum	Typical	Maximum	Units
Input voltage Pack+ to Pack–	3	15	26	V
Charge and discharge current	0	2	7	A

2 bq40z50EVM Quick Start Guide

This section provides the step-by-step procedures required to use a new EVM and configure it for operation in a laboratory environment.

2.1 Items Needed for EVM Setup and Evaluation

- bq40z50 or bq296000 circuit module
- EV2300 or EV2400 communications interface adapter
- Cable to connect the EVM to an EV2300 or EV2400 communications interface adapter
- USB cable to connect the communications interface adapter to the computer
- Computer setup with Windows XP, or higher, operating system
- Access to the Internet to download the Battery Management Studio software setup program
- One-to-four battery cells or 1-k Ω resistors to configure a cell simulator
- A DC power supply that can supply 16.8 V and 2 A (constant current and constant voltage capability is desirable)

2.2 Software Installation

Find the latest software version in the bq40z50 tool folder on www.ti.com. Use the following steps to install the bq40z50 Battery Management Studio software:

1. Download and run the Battery Management Studio setup program from the Development Tools section of the bq40z50EVM product folder on www.ti.com. See [Section 3](#) for detailed information on using the tools in the Battery Management Studio.
2. If the communications interface adapter was not previously installed, after the Battery Management Studio installation, a TI USB driver installer pops up. Click "Yes" for the agreement message and follow its instructions. Two drivers are associated with the EV2300 and an additional file may be required for the EV2400. Follow the instructions to install both. Do not reboot the computer, even if asked to do so.
3. Plug the communications interface adapter into a USB port using the USB cable. The Windows system may show a prompt that new hardware has been found. When asked, "Can Windows connect to Windows Update to search for software?", select "No, not this time", and click "Next". In the next dialog window, it indicates "This wizard helps you install software for: TI USB Firmware Updater". Select "Install the software automatically (Recommended)" and click "Next". It is common for the next screen to be the Confirm File Replace screen. Click "No" to continue. If this screen does not appear, then go to the next step. After Windows indicates that the installation was finished, a similar dialog window pops up to install the second driver. Proceed with the same installation preference as the first one. The second driver is TI USB bq80xx Driver.

2.3 EVM Connections

This section covers the hardware connections for the EVM. See [Figure 2-1](#).

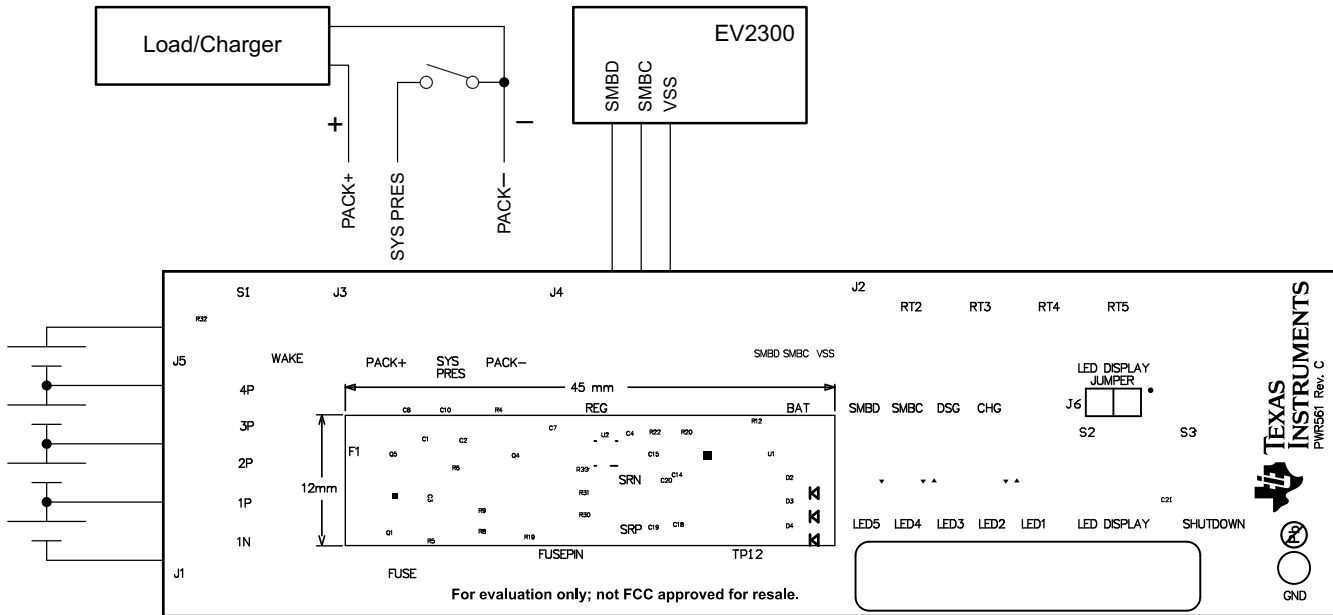


Figure 2-1. bq40z50 Circuit Module Connection to Cells and System Load or Charger

- Direct connection to the cells: 1N (BAT–), 1P, 2P, 3P, 4P (BAT+)

Attach the cells to the J1 and J5 terminal block. A specific cell connection sequence is not required; although, it is good practice to start with lowest cell in the stack (cell 1), then attach cells 2 through 4 in sequence. The U1 and U2 devices should not be damaged by other cell connection sequences, but there is a possibility that the bq296000 could blow the fuse. Attaching cells starting with cell 1 should eliminate this risk. A short should be placed across unused voltage sense inputs. See [Figure 2-2](#).

Number of Cells	J1 and J5 Terminal Block Connections								
	1N		1P		2P		3P		4P
1	⊖	-cell1+	⊖	short	⊖	short	⊖	short	⊖
2	⊖	-cell1+	⊖	-cell2+	⊖	short	⊖	short	⊖
3	⊖	-cell1+	⊖	-cell2+	⊖	-cell3+	⊖	short	⊖
4	⊖	-cell1+	⊖	-cell2+	⊖	-cell3+	⊖	-cell4+	⊖

Figure 2-2. Cell Connection Configuration

A resistor cell simulator can be used instead of battery cells. Connect a resistor between each of the contacts on the J1 or J5 connector. For example, from 1N to 1P, from 1P to 2P, and so forth, until the desired number of cells has been achieved. A power supply can provide power to the cell simulator. Set the power supply to the desired cell voltage × the number of cells and attach the ground wire to 1N and the positive wire to 4P. For example, for a 3S configuration with a 3.6-V cell voltage, set the power supply to 3 × 3.6 = 10.8 V.

- Serial communications port (SMBC, SMBD)

Attach the communications interface adapter cable to J2 and to the SMB port on the EV2300.

- System load and charger connections across PACK+ and PACK–

Attach the load or power supply to the J3 or J4 terminal block. The positive load or power supply wire should be connected to at least one of the first two terminal block positions labeled PACK+. The ground wire for the load or power supply should be connected to the last terminal block positions labeled PACK–.

- System-present pin (SYS PRES)

To start charge or discharge test, connect the SYS PRES position on the J3 terminal block to PACK–. The SYS PRES can be left open if the non-removable (NR) bit is set to 1 in the Pack Configuration A register. To test sleep mode, disconnect the SYS PRES pin.

- Wake-up the device up from shutdown (WAKE)

Press the Wake pushbutton switch to temporarily connect Bat+ to Pack+. This applies voltage to the PACK pin on the bq40z50 to power-up the regulators and start the initialization sequence.

- Parameter setup

The default data flash settings configure the device for 3-series Li-Ion cells. The user should change the | Data Flash | Settings | DA Configuration register to set up the number of series cells to match the physical pack configuration. This provides basic functionality to the setup. Other data flash parameters should also be updated to fine tune the gauge to the pack. See the bq40z50 TRM for help with setting the parameters.

2.4 Update Firmware

Find the latest firmware version in the appropriate bq40z50 folder on www.ti.com. Use the following steps to install the bq40z50 *Battery Management Studio* software:

1. Run *Battery Management Studio* from the **Start | Programs | Texas Instruments | Battery Management Studio** menu sequence, or the *Battery Management Studio* shortcut.
2. Follow the directions in [Section 3.5](#), select the firmware .srec file downloaded from www.ti.com, and click the **Program** button.
3. Once programming is finished, the EVM is ready to use with the latest firmware.

3 Battery Management Studio

3.1 Registers Screen

Run Battery Management Studio from the Start | Programs | Texas Instruments | Battery Management Studio menu sequence, or the Battery Management Studio shortcut. The Registers screen (see [Figure 3-1](#)) appears. The Registers section contains parameters used to monitor gauging. The Bit Registers section provides bit level picture of status and fault registers. A green flag indicates that the bit is 0 (low state) and a red flag indicates that the bit is 1 (high state). Data begins to appear once the *Refresh* (single-time scan) button is selected, or it scans continuously if the *Scan* button is selected.

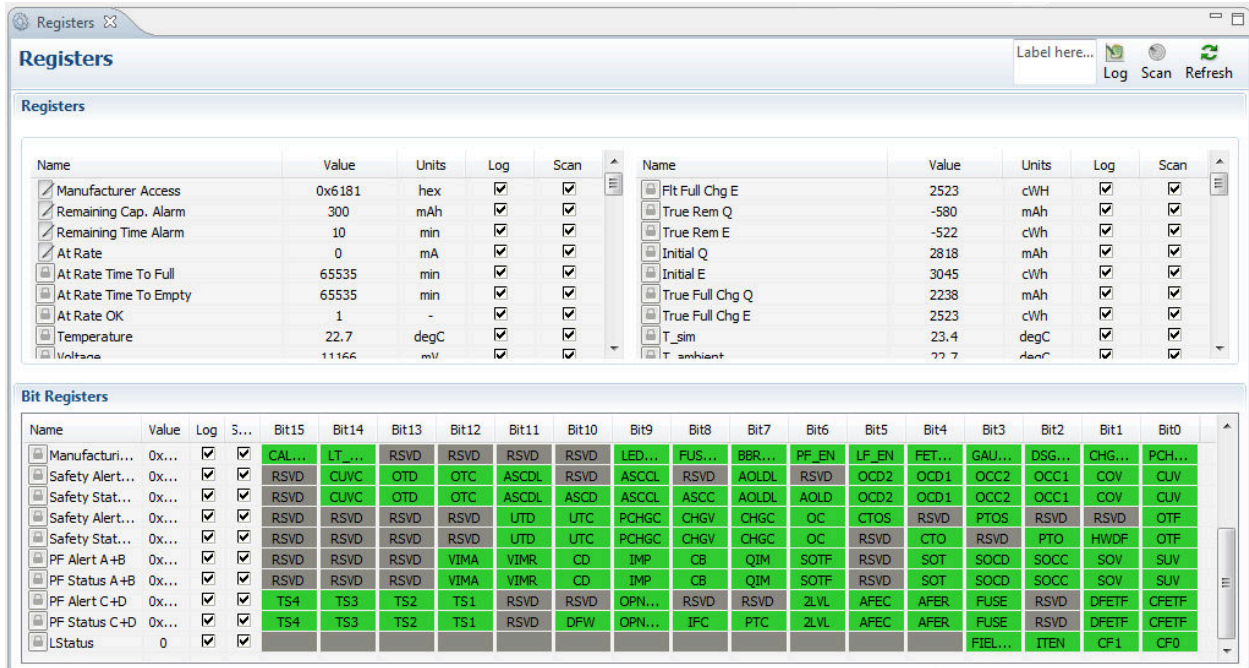


Figure 3-1. Registers Screen

The continuous scanning period can be set via the | Window | Preferences | SBS | Scan Interval | menu selections.

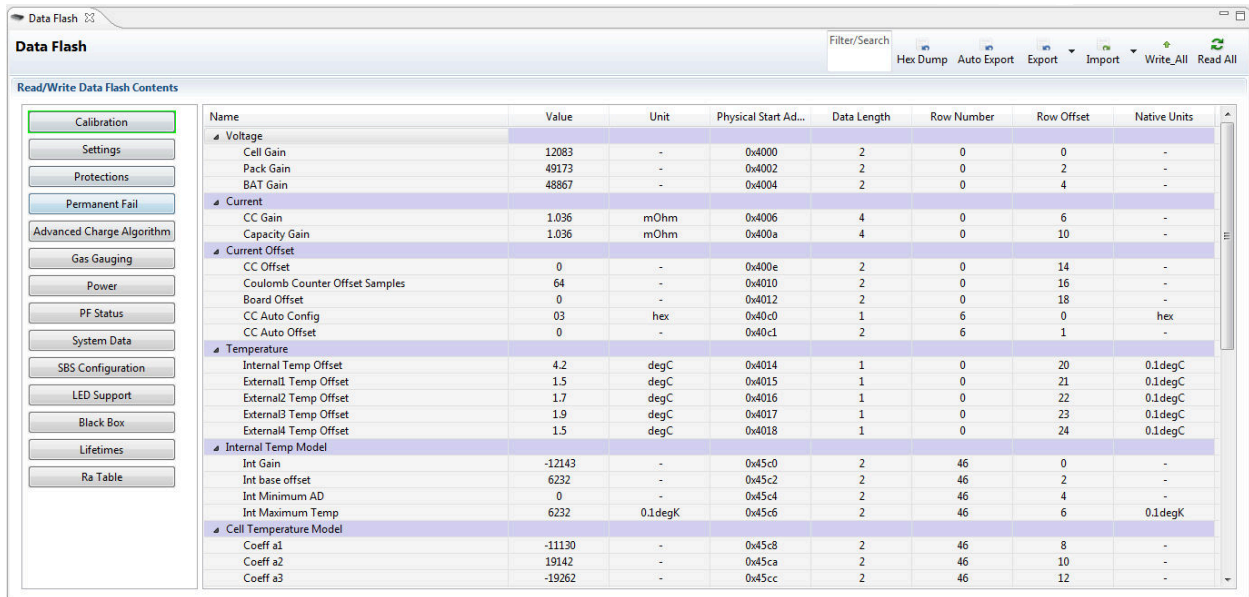
The Battery Management Studio program provides a logging function which logs the values that are selected by the Log check boxes located beside each parameter in the Register section. To enable this function, select the *Log* button; this causes the *Scan* button to be selected. When logging is stopped, the *Scan* button is still selected and has to be manually deselected.

3.2 Setting Programmable bq40z50 Options

The bq40z50 data flash comes configured per the default settings detailed in the bq40z50 TRM. Ensure that the settings are correctly changed to match the pack and application for the solution being evaluated.

Note

The correct setting of these options is essential to get the best performance. The settings can be configured using the Data Flash screen (see [Figure 3-2](#)).

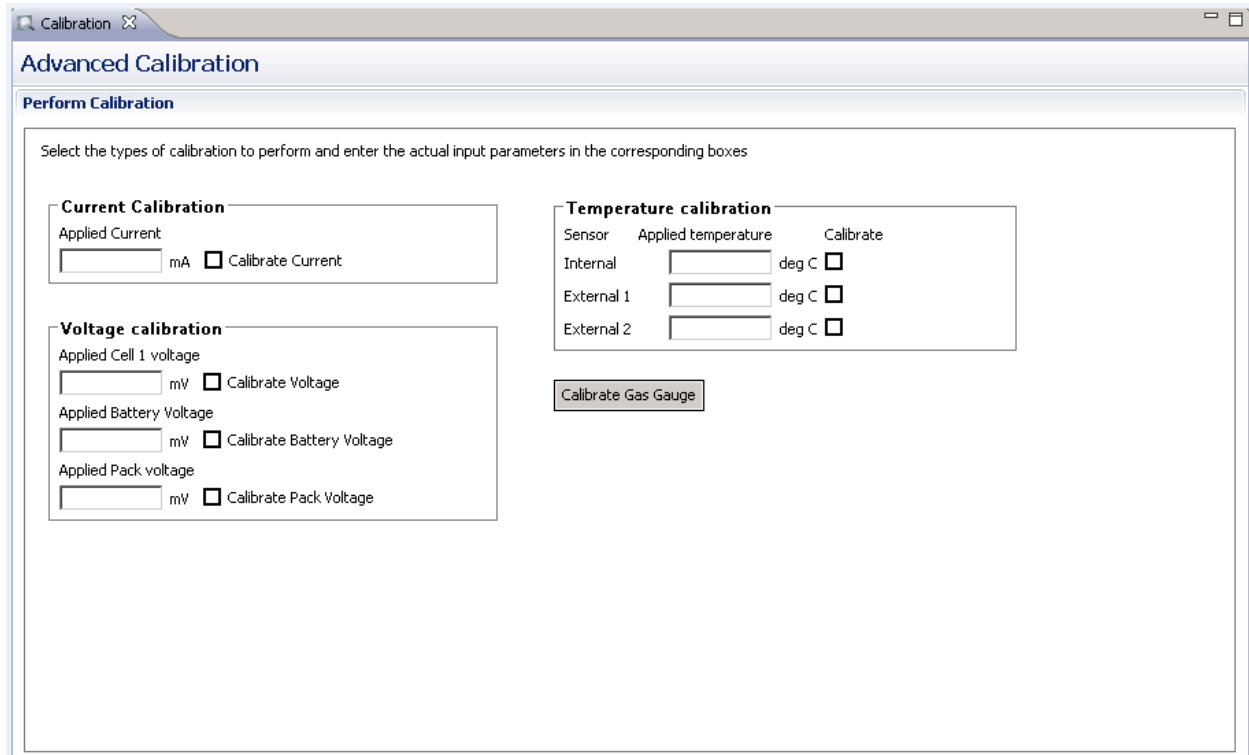


Name	Value	Unit	Physical Start Ad...	Data Length	Row Number	Row Offset	Native Units
Voltage							
Cell Gain	12083	-	0x4000	2	0	0	-
Pack Gain	49173	-	0x4002	2	0	2	-
BAT Gain	48867	-	0x4004	2	0	4	-
Current							
CC Gain	1.036	mOhm	0x4006	4	0	6	-
Capacity Gain	1.036	mOhm	0x400a	4	0	10	-
Current Offset							
CC Offset	0	-	0x400e	2	0	14	-
Coulomb Counter Offset Samples	64	-	0x4010	2	0	16	-
Board Offset	0	-	0x4012	2	0	18	-
CC Auto Config	03	hex	0x40c0	1	6	0	hex
CC Auto Offset	0	-	0x40c1	2	6	1	-
Temperature							
Internal Temp Offset	4.2	degC	0x4014	1	0	20	0.1degC
External1 Temp Offset	1.5	degC	0x4015	1	0	21	0.1degC
External2 Temp Offset	1.7	degC	0x4016	1	0	22	0.1degC
External3 Temp Offset	1.9	degC	0x4017	1	0	23	0.1degC
External4 Temp Offset	1.5	degC	0x4018	1	0	24	0.1degC
Internal Temp Model							
Int Gain	-12143	-	0x45c0	2	46	0	-
Int base offset	6232	-	0x45c2	2	46	2	-
Int Minimum AD	0	-	0x45c4	2	46	4	-
Int Maximum Temp	6232	0.1degK	0x45c6	2	46	6	0.1degK
Cell Temperature Model							
Coeff a1	-11130	-	0x45c8	2	46	8	-
Coeff a2	19142	-	0x45ca	2	46	10	-
Coeff a3	-19262	-	0x45cc	2	46	12	-

Figure 3-2. Data Flash Screen

3.3 Calibration Screen

The voltages, temperatures, and currents should be calibrated to provide good gauging performance. Press the *Calibration* button to select the Advanced Calibration window. See [Figure 3-3](#).



Advanced Calibration

Perform Calibration

Select the types of calibration to perform and enter the actual input parameters in the corresponding boxes

Current Calibration

Applied Current
 mA Calibrate Current

Voltage calibration

Applied Cell 1 voltage
 mV Calibrate Voltage

Applied Battery Voltage
 mV Calibrate Battery Voltage

Applied Pack voltage
 mV Calibrate Pack Voltage

Temperature calibration

Sensor	Applied temperature	Calibrate
Internal	<input type="text"/> deg C	<input type="checkbox"/>
External 1	<input type="text"/> deg C	<input type="checkbox"/>
External 2	<input type="text"/> deg C	<input type="checkbox"/>

Figure 3-3. Calibration Screen

3.3.1 Voltage Calibration

- Measure the voltage from Cell 1 to 1N and enter this value in the Applied Cell 1 Voltage field and select the Calibrate Voltage box.

- Measure the voltage from Bat+ to Bat– and enter this value in the Applied Battery Voltage field and select the Calibrate Battery Voltage box.
- Measure the voltage from Pack+ to Pack– and enter this value in the Applied Pack Voltage field and select the Calibrate Pack Voltage box. If the voltage is not present, then turn the charge and discharge FETs on by entering a 0x0022 command in the Manufacturer Access register on the Register screen.
- Press the *Calibrate Gas Gauge* button to calibrate the voltage measurement system.
- Deselect the Calibrate Voltage boxes after voltage calibration has completed.

3.3.2 Temperature Calibration

- Enter the room temperature in each of the Applied Temperature fields and select the Calibrate box for each thermistor to be calibrated. The temperature values must be entered in degrees Celsius.
- Press the *Calibrate Gas Gauge* button to calibrate the temperature measurement system.
- Deselect the Calibrate boxes after temperature calibration has completed.

3.3.3 Current Calibration

The Board Offset calibration option is not offered in Battery Management Studio, because it is not required when using the bq40z50EVM. The Board Offset calibration option is available in bqProduction.

- Connect and measure a 2-A current source from 1N (–) and Pack– (+) to calibrate without using the FETs. (TI does not recommend calibration using the FETs.)
- Enter –2000 in the Applied Current field and select the Calibrate Current box.
- Press the *Calibrate Gas Gauge* button to calibrate.
- Deselect the Calibrate Current box after current calibration has completed.

Note

Current can also be calibrated using the FETs. Measure the current in the discharge path and enter this value in the Applied Current field.

3.4 Chemistry Screen

The chemistry file contains parameters that the simulations use to model the cell and its operating profile. It is critical to program a Chemistry ID that matches the cell into the device. Some of these parameters can be viewed in the Data Flash section of the Battery Management Studio.

Press the *Chemistry* button to select the Chemistry window.

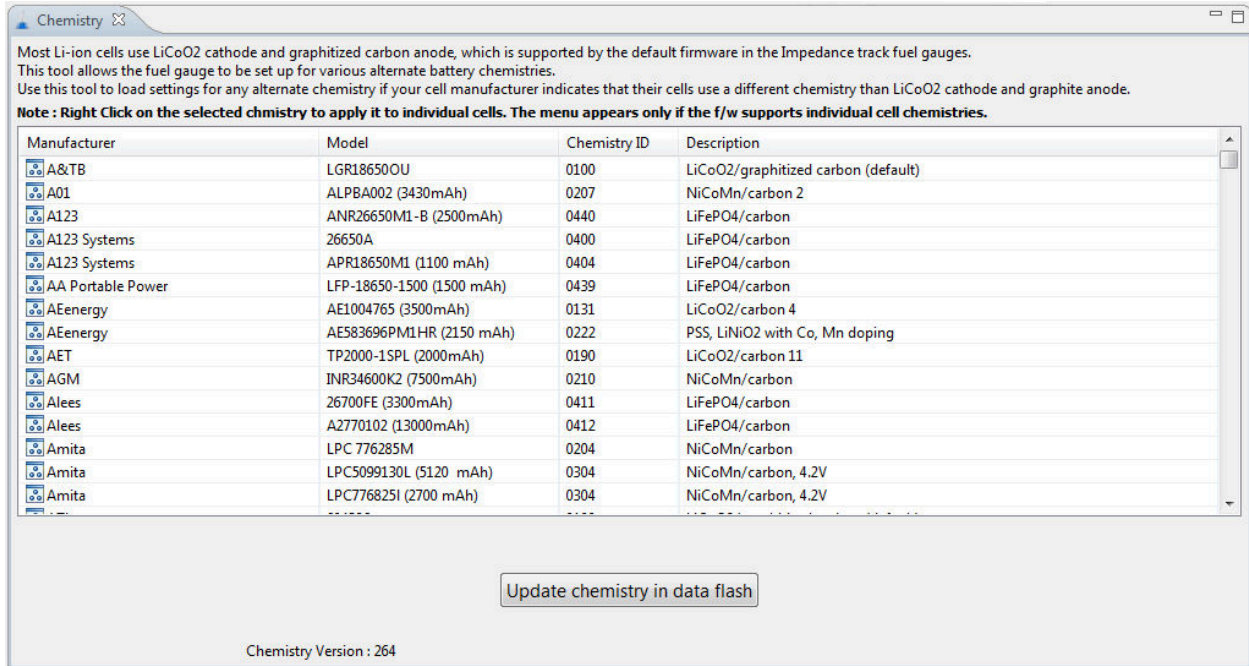


Figure 3-4. Chemistry Screen

- The table can be sorted by clicking the desired column. for example: Click the Chemistry ID column header.
- Select the ChemID that matches your cell from the table (see [Figure 3-4](#)).
- Press the Update Chemistry in the *Data Flash* button to update the chemistry in the device.

3.5 Firmware Screen

Press the *Firmware* button to select the Firmware Update window. This window allows the user to export and import the device firmware.

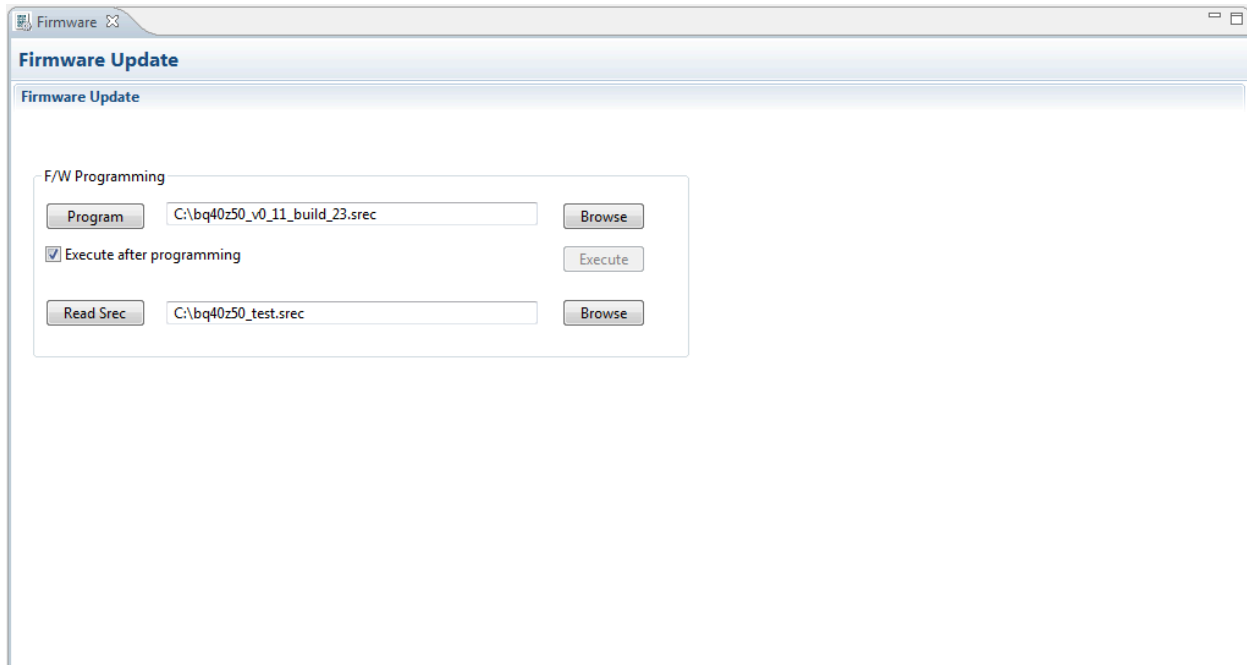


Figure 3-5. Firmware Screen

3.5.1 Programming the Flash Memory

The upper section of the Firmware screen is used to initialize the device by loading the default .srec into the flash memory (see [Figure 3-5](#)).

- Search for the .srec file using the *Browse* button.
- Select the *Execute after programming* box to automatically return the device to Normal mode after programming has completed.
- Press the *Program* button and wait for the download to complete.

3.5.2 Exporting the Flash Memory

The lower section of the Firmware screen is used to export all of the flash memory from the device (see [Figure 3-5](#)).

- Press the *Browse* button and enter an .srec filename.
- Press the *Read Srec* to save the flash memory contents to the file. Wait for the download to complete.

3.6 Advanced Comm SMB Screen

Press the *Advanced Comm SMB* button to select the Advanced SMB Comm window. This tool provides access to parameters using SMB and Manufacturing Access commands. See [Figure 3-6](#).

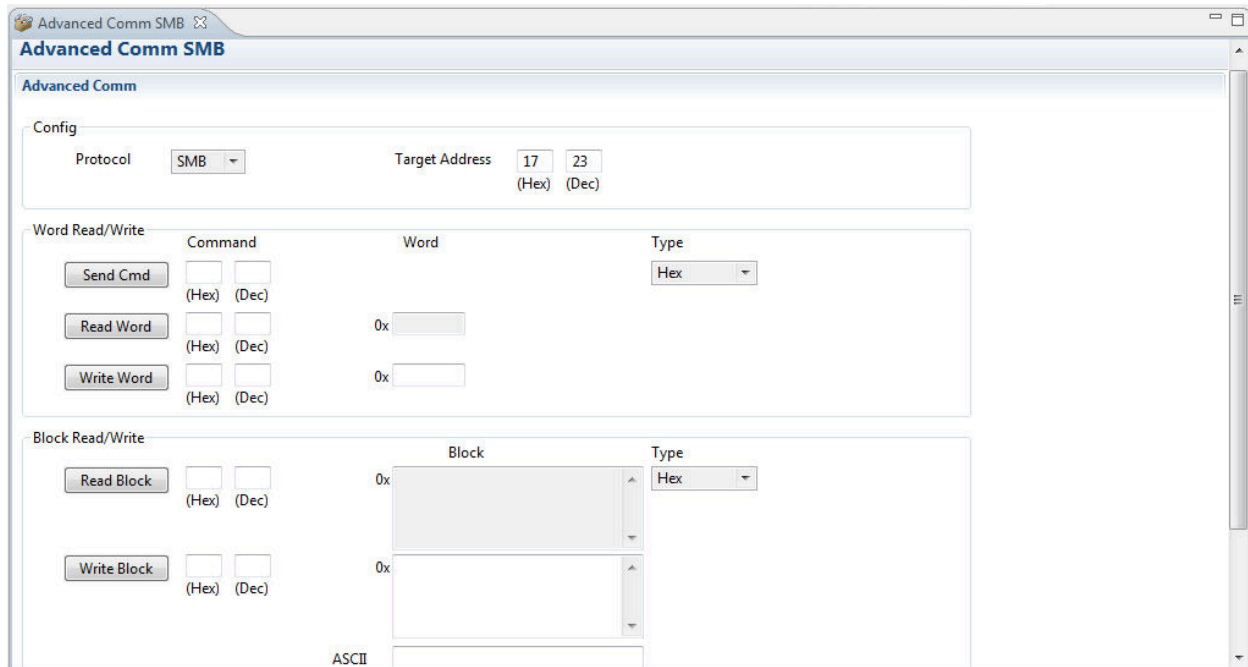


Figure 3-6. Advanced Comm Screen

Examples:

Reading an SMB Command.

- Read SBData Voltage (0x09)
 - SMBus Read Word. Command = 0x09
 - Word = 0x3A7B, which is hexadecimal for 14971 mV

Sending a MAC Gauging() to enable IT via ManufacturerAccess().

- With Impedance Track™ disabled, send Gauging() (0x0021) to ManufacturerAccess().
 - SMBus Write Word. Command = 0x00. Data = 00 21

Reading Chemical ID() (0x0006) via ManufacturerAccess()

- Send Chemical ID() to ManufacturerAccess()
 - SMBus Write Word. Command = 0x00. Data sent = 00 06
- Read the result from ManufacturerData()
 - SMBus Read Block. Command = 0x23. Data read = 00 01
 - That is 0x0100, chem ID 100

4 bq40z50EVM Circuit Module Schematic

This section contains information on modifying the EVM and using various features on the reference design.

4.1 Pre-Charge

The EVM provides a power resistor and FET to support a reduced current pre-charge path to charge the pack when cell voltages are below the pre-charge voltage threshold. This reduces heating that could lead to cell damage or reduced operating lifetime. The resistor (R1) is set up to limit the current to less than 40 mA for a 4S configuration. The user can change R1 to setup the pre-charge current to a different value.

4.2 LED Control

The EVM is configured to support five LEDs to provide state-of-charge information for the cells. The LED interface is enabled by entering a 0x0027 command in the Manufacturing Access register on the Registers screen. Press the *LED DISPLAY* button to illuminate the LEDs for approximately 5 seconds.

4.3 Emergency Shutdown

The Emergency Shutdown function allows the user to disable the charge and discharge FETs with an external GPIO pin. The EMSHUT and NR bits must be set high in the DA Configuration register to enable this feature. Press the SHUTDOWN pushbutton switch for one second to disable these FETs, and press it again for one second to enable them.

Note

Remember to remove the SYS PRES-to-PACK– short, if present.

4.4 Testing Fuse-Blowing Circuit

To prevent the loss of board functionality during the fuse-blowing test, the actual chemical fuse is not provided on the EVM. FET Q5 drives the FUSE test point low if a fuse-blow condition occurs. FUSE is attached to an open drain FET, so a pull-up resistor is required to check whether the FUSE pulls low. A FUSEPIN test point is attached to the gate of Q5; so, monitoring FUSEPIN can be used to test this condition without adding a pull-up resistor. Fuse placement on the application board is shown in the bq40z50 [data sheet](#). A chemical fuse can also be soldered to the EVM for in-system testing. A copper bridge is included on the PCB to bypass the chemical fuse, so it has to be cut to allow the fuse to open the power path. The cut is illustrated in yellow on [Figure 4-1](#) with arrows pointing to the location.

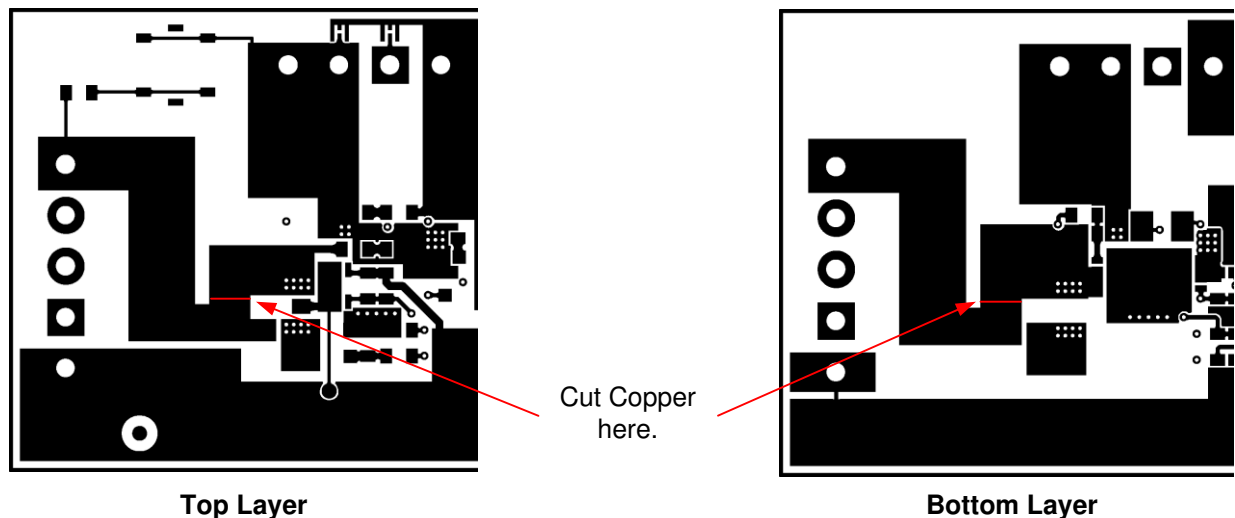


Figure 4-1. Fuse Trace Modifications

4.5 PTC Thermistor

The PTC interface is designed to work with a specific PTC thermistor. The thermistor must have a 10-kΩ typical resistance over the normal operating temperature range and the resistance must be greater than 1.2 MΩ at the PTC trip temperature. The muRata PRF18BA103QB1RB thermistor will work with this device.

The EVM has a 10-kΩ resistor installed on the PTC footprint.

The PTC function can be disabled by connecting PTC and PTCEN to VSS.

5 Circuit Module Physical Layouts

This section contains the printed-circuit board (PCB) layout, assembly drawings, and schematic for the bq40z50 and bq296000 circuit modules.

5.1 Board Layout

This section shows the dimensions, PCB layers, and assembly drawing for the bq40z50 modules.

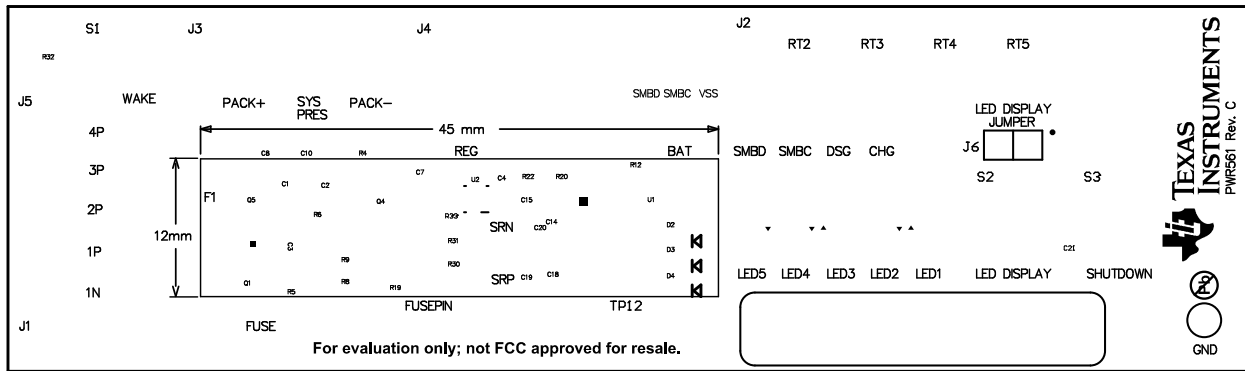


Figure 5-1. Top Silk Screen

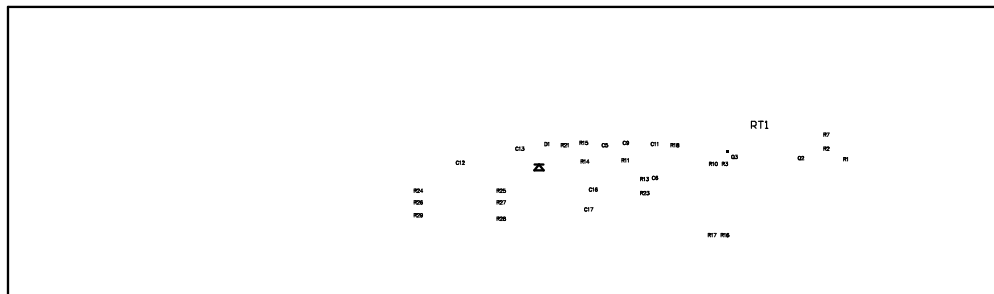


Figure 5-2. Bottom Silk Screen

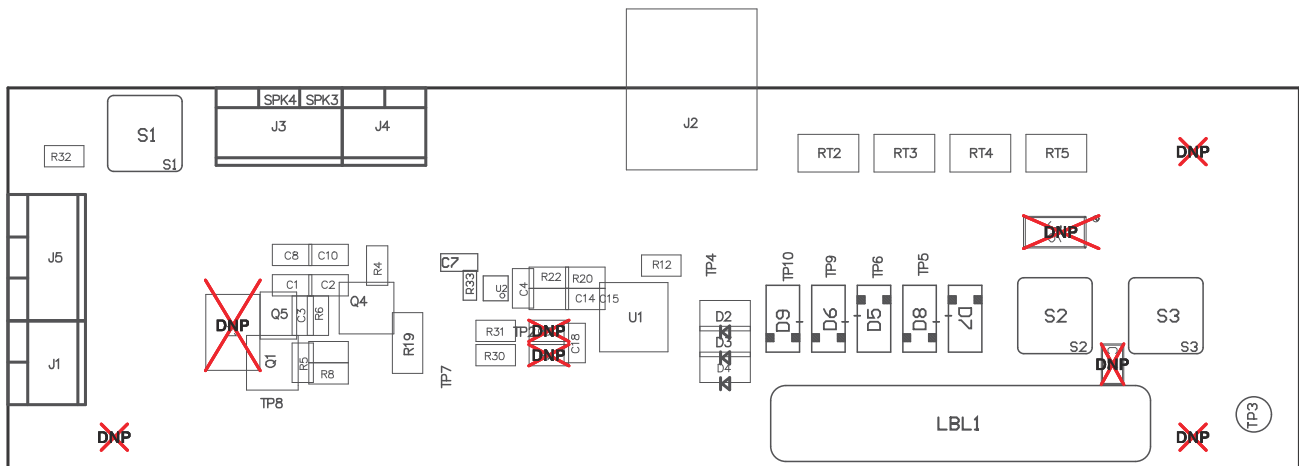


Figure 5-3. Top Assembly

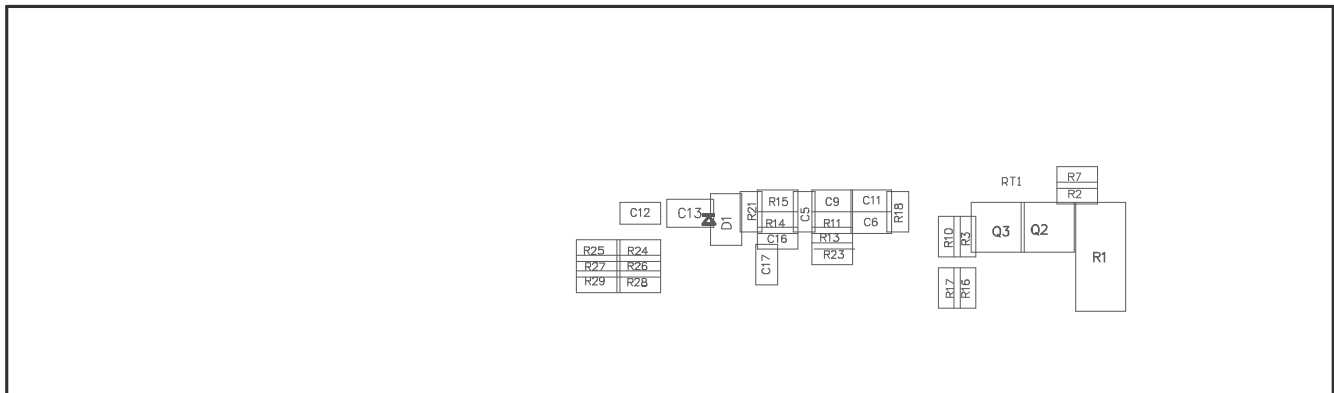


Figure 5-4. Bottom Assembly

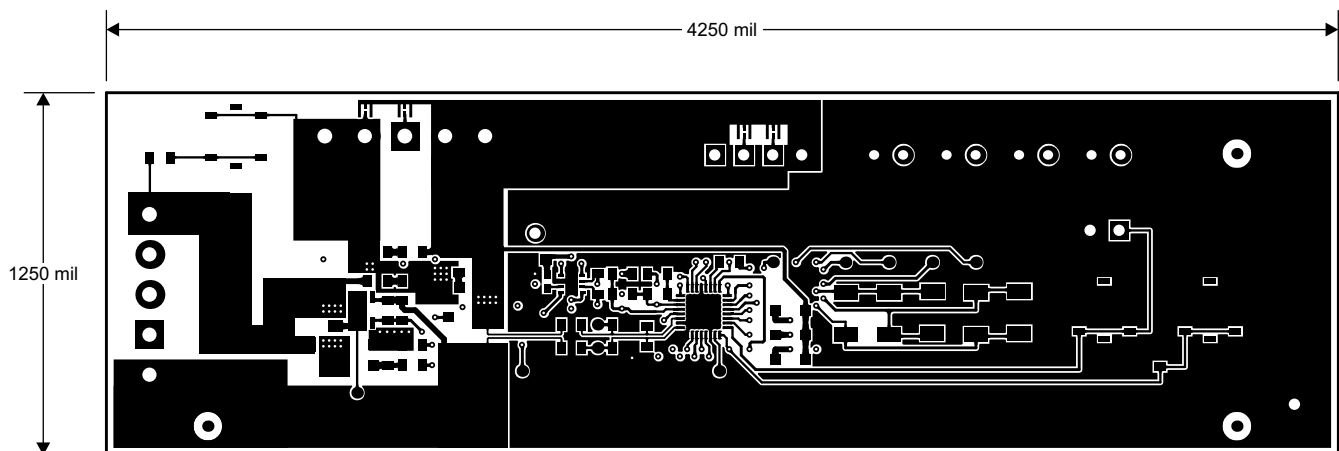


Figure 5-5. Top Layer

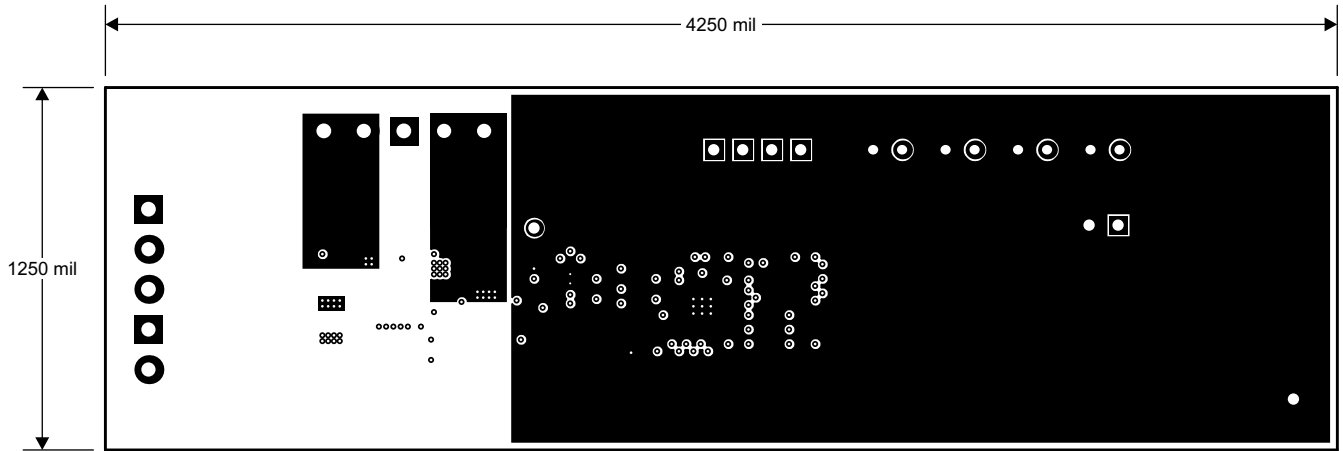


Figure 5-6. Internal Layer 1

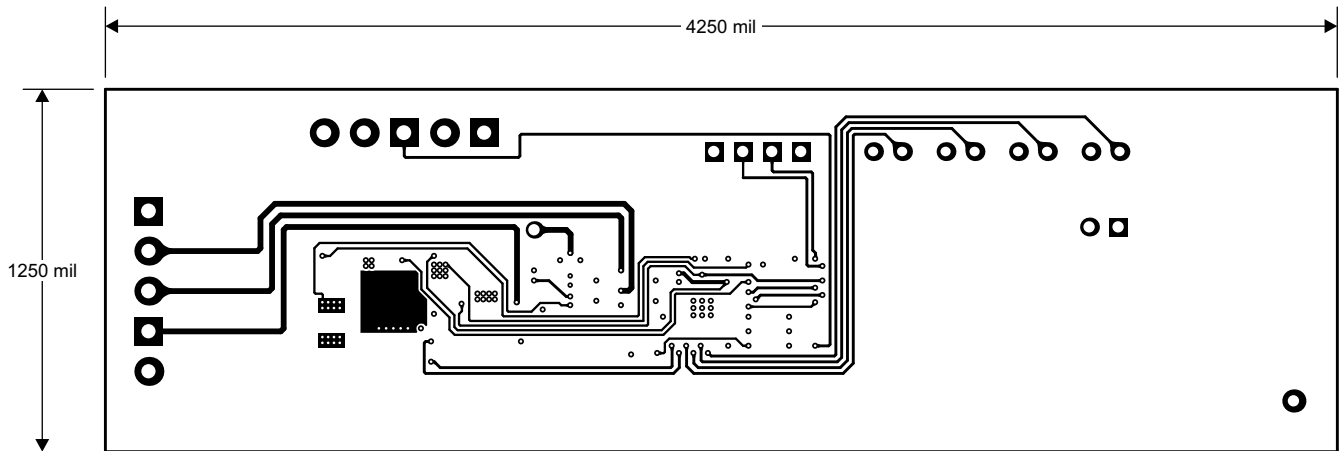


Figure 5-7. Internal Layer 2

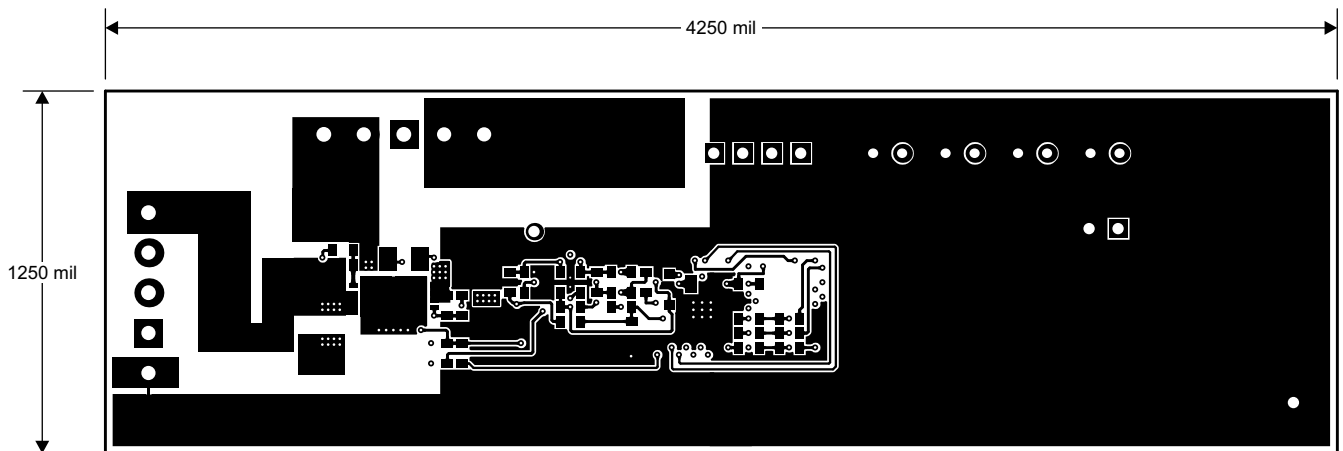
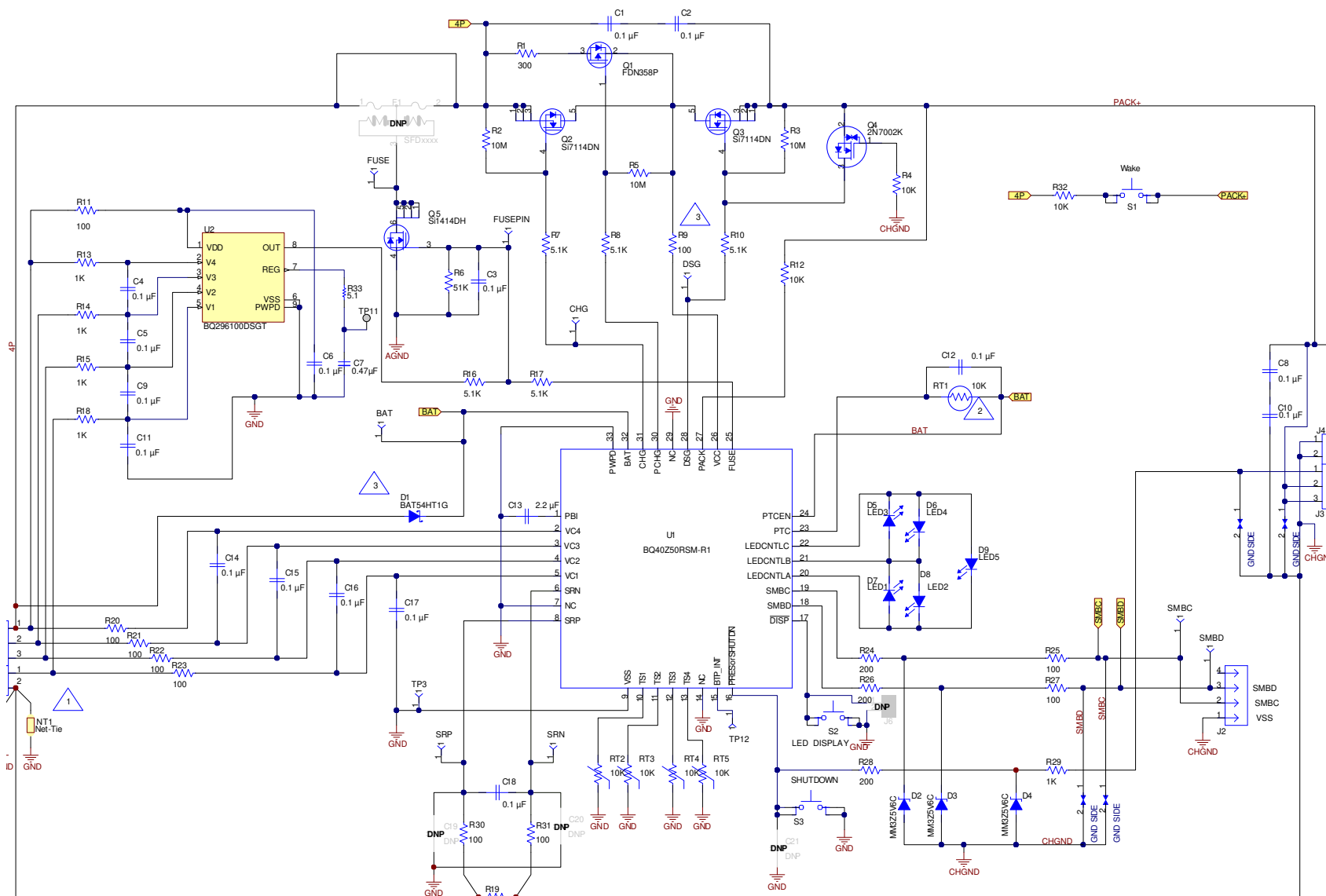


Figure 5-8. Bottom Layer

5.2 Schematic



- 1 IC ground should be connected to the 1N cell tab.
- 2 Place RT1 close to Q2 and Q3.
- 3 Replace D1 and R9 with a 10 ohm resistor for Single cell applications

6 Bill of Materials

COUNT	RefDes	Value	Description	Size	Part Number	MFR
16	C1-6, C8-12, C14-18	0.1 μ F	Capacitor, Ceramic Chip, 50 V, X7R, 20%	0603	C0603C104M5RACTU	Kemet
1	C7	0.47 μ F	Capacitor, Ceramic, 0.47 μ F, 10 V, X5R, 10%	0603	C0603C474K8PACTU	Kemet
1	C13	2.2 μ F	Capacitor, Ceramic, 25 V, X7R, 20%	0805	C2012X7R1E225M085AB	TDK
0	C19-21	DNP	Capacitor, Ceramic, 50 V, X7R, 20%	0603	C0603C104M5RACTU	Kemet
1	D1	BAT54HT1G	Diode, Schottky, 200-mA, 30-V	SOD323	BAT54HT1G	On Semi
3	D2-4	MM3Z5V6C	Diode, Zener, 5.6V, 200mW	SOD323	MM3Z5V6C	Fairchild
5	D5-9	SML-X23GC	LED 2x3mm 565nm GRN WTR CLR SMD	1206	SML-X23GC	Lumex
0	F1	DNP	Fuse, Slo-Blo Ceramic, xxA, yyyV	SFDxxx	SFDxxxx	Sony
1	R1	300	Resistor, Chip, 1W, 5%	2512	CRCW2512300RJNEG	Vishay-Dale
3	R2-3, R5	10M	Resistor, Chip, 1/10-W, 5%	0603	CRCW060310M0JNEA	Vishay-Dale
3	R4, R12, R32	10K	Resistor, Chip, 1/10-W, 5%	0603	CRCW060310K0JNEA	Vishay-Dale
1	R6	51K	Resistor, Chip, 1/16-W, 5%	0603	CRCW060351K0JNEA	Vishay-Dale
5	R7-8, R10, R16-17	5.1K	Resistor, Chip, 1/10-W, 5%	0603	CRCW06035K10JNEA	Vishay-Dale
10	R9, R11, R20-23, R25, R27, R30-31	100	Resistor, Chip, 1/10-W, 5%	0603	CRCW0603100RJNEAHP	Vishay-Dale
5	R13-15 R18 R29	1K	Resistor, Chip, 1/10-W, 5%	0603	CRCW06031K00JNEA	Vishay-Dale
1	R19	0.001 50ppm	Resistor, Chip, 1 watt, \pm 1%	1206	CSR1206-0R001F1	Riedon
3	R24, R26, R28	200	Resistor, Chip, 1/16-W, 5%	0603	CRCW0603200RJNEA	Vishay-Dale
1	R33	5.1	Resistor, 5.1, 0.063 W, 5%, 0402	0402	CRCW04025R10JNED	Vishay-Dale
2	J1, J4	ED555/2DS	Terminal Block, 2-pin, 6-A, 3.5mm	0.27 x 0.25 inch	ED555/2DS	OST
1	J2	22-05-3041	Header, Friction Lock Ass'y, 4-pin Right Angle,	0.400 x 0.500 inch	22-05-3041	Molex
2	J3, J5	ED555/3DS	Terminal Block, 3-pin, 6-A, 3.5mm	0.41 x 0.25 inch	ED555/3DS	OST
0	J6		Header, TH, 100mil spacing, 2x1, 230 mil above insulator	0.100 inch x 2	PEC02SAAN	Sullins
1	LBL1		Thermal Transfer Printable Labels, 1.250 W x 0.250 H inch - 10,000 per roll	PCB Label 1.250 W x 0.250 H inch	THT-13-457-10	Brady
1	RT1	10K	Thermistor, NTC, 5 Ω , 1-A	1206	CRCW120610K0JNEA	Vishay
4	RT2-5	10K	Thermistor, NTC, 3-A	0.095 X 0.150 inch	103AT-2	Semitec
3	S1, S2, S3	EVQ-PLHA15	Switch, Push button, Momentary, 1P1T, 50-mA, 12-V	0.200 x 0.200 inch	EVQ-PLHA15	Panasonic
1	TP3	5001	Test Point, Black, Thru Hole Color Keyed	0.100 x 0.100 inch	5001	Keystone
1	Q1	FDN358P	MOSFET, Pch, -30V, -1.5A, 125 m Ω	SOT23	FDN358P	Fairchild
2	Q2-3	Si7114DN-T1-E3	MOSFET Nch 30V, 11.7A, 7.5 m Ω	PWRPAK 1212	Si7114DN-T1-E3	Vishay
1	Q4	2N7002K-T1-E3	MOSFET, Nch, 60V, 300 mA, 2- Ω	SOT23	2N7002K-T1-E3	Vishay
1	Q5	Si1414DH-T1-GE3	MOSFET, Nch, 30V, 4A, 46 m Ω	SC-70	Si1414DH-T1-GE3	Vishay
1	U1	BQ40Z50RSMR(T)-R1	IC, 2- to 4-Series Li-Ion Battery Pack Manager	QFN	BQ40Z50RSMR(T)-R1	TI
1	U2		IC, Overvoltage Protection for 2-Series, 3-Series, and 4-Series Cell Li-Ion Batteries with Regulated Output Supply, DSG0008A	DSG0008A	BQ296103DSGT	TI
1	W1		Cable assembly, 4 pin	N/A	CBL002	TI
1	IPCB		Printed Circuit Board	4.25 in x 1.25 in	PWR561	Any

7 Related Documentation from Texas Instruments

- bq40z50, 1-Series, 2-Series, 3-Series, and 4-Series Li-Ion Battery Pack Manager data sheet, [SLUSBS8](#)
- bq40z50 Technical Reference Manual, [SLUUA43](#)
- bq296000, BQ2960XY/BQ2961XY Overvoltage Protection for 2-Series, 3-Series, and 4-Series Cell Li-Ion Batteries with Regulated Output Supply, [SLUSBU5](#)

8 Revision History

Changes from Revision B (September 2016) to Revision C (November 2022)	Page
• Updated the numbering format for tables, figures, and cross-references throughout the document.....	1
Changes from Revision A (July, 2015) to Revision B (September, 2016)	Page
• Added <i>Update Firmware</i> section.....	5

STANDARD TERMS FOR EVALUATION MODULES

1. *Delivery:* TI delivers TI evaluation boards, kits, or modules, including any accompanying demonstration software, components, and/or documentation which may be provided together or separately (collectively, an "EVM" or "EVMs") to the User ("User") in accordance with the terms set forth herein. User's acceptance of the EVM is expressly subject to the following terms.
 - 1.1 EVMs are intended solely for product or software developers for use in a research and development setting to facilitate feasibility evaluation, experimentation, or scientific analysis of TI semiconductor products. EVMs have no direct function and are not finished products. EVMs shall not be directly or indirectly assembled as a part or subassembly in any finished product. For clarification, any software or software tools provided with the EVM ("Software") shall not be subject to the terms and conditions set forth herein but rather shall be subject to the applicable terms that accompany such Software
 - 1.2 EVMs are not intended for consumer or household use. EVMs may not be sold, sublicensed, leased, rented, loaned, assigned, or otherwise distributed for commercial purposes by Users, in whole or in part, or used in any finished product or production system.
2. *Limited Warranty and Related Remedies/Disclaimers:*
 - 2.1 These terms do not apply to Software. The warranty, if any, for Software is covered in the applicable Software License Agreement.
 - 2.2 TI warrants that the TI EVM will conform to TI's published specifications for ninety (90) days after the date TI delivers such EVM to User. Notwithstanding the foregoing, TI shall not be liable for a nonconforming EVM if (a) the nonconformity was caused by neglect, misuse or mistreatment by an entity other than TI, including improper installation or testing, or for any EVMs that have been altered or modified in any way by an entity other than TI, (b) the nonconformity resulted from User's design, specifications or instructions for such EVMs or improper system design, or (c) User has not paid on time. Testing and other quality control techniques are used to the extent TI deems necessary. TI does not test all parameters of each EVM. User's claims against TI under this Section 2 are void if User fails to notify TI of any apparent defects in the EVMs within ten (10) business days after delivery, or of any hidden defects with ten (10) business days after the defect has been detected.
 - 2.3 TI's sole liability shall be at its option to repair or replace EVMs that fail to conform to the warranty set forth above, or credit User's account for such EVM. TI's liability under this warranty shall be limited to EVMs that are returned during the warranty period to the address designated by TI and that are determined by TI not to conform to such warranty. If TI elects to repair or replace such EVM, TI shall have a reasonable time to repair such EVM or provide replacements. Repaired EVMs shall be warranted for the remainder of the original warranty period. Replaced EVMs shall be warranted for a new full ninety (90) day warranty period.

WARNING

Evaluation Kits are intended solely for use by technically qualified, professional electronics experts who are familiar with the dangers and application risks associated with handling electrical mechanical components, systems, and subsystems.

User shall operate the Evaluation Kit within TI's recommended guidelines and any applicable legal or environmental requirements as well as reasonable and customary safeguards. Failure to set up and/or operate the Evaluation Kit within TI's recommended guidelines may result in personal injury or death or property damage. Proper set up entails following TI's instructions for electrical ratings of interface circuits such as input, output and electrical loads.

NOTE:

EXPOSURE TO ELECTROSTATIC DISCHARGE (ESD) MAY CAUSE DEGRADATION OR FAILURE OF THE EVALUATION KIT; TI RECOMMENDS STORAGE OF THE EVALUATION KIT IN A PROTECTIVE ESD BAG.

3 Regulatory Notices:

3.1 United States

3.1.1 Notice applicable to EVMs not FCC-Approved:

FCC NOTICE: This kit is designed to allow product developers to evaluate electronic components, circuitry, or software associated with the kit to determine whether to incorporate such items in a finished product and software developers to write software applications for use with the end product. This kit is not a finished product and when assembled may not be resold or otherwise marketed unless all required FCC equipment authorizations are first obtained. Operation is subject to the condition that this product not cause harmful interference to licensed radio stations and that this product accept harmful interference. Unless the assembled kit is designed to operate under part 15, part 18 or part 95 of this chapter, the operator of the kit must operate under the authority of an FCC license holder or must secure an experimental authorization under part 5 of this chapter.

3.1.2 For EVMs annotated as FCC – FEDERAL COMMUNICATIONS COMMISSION Part 15 Compliant:

CAUTION

This device complies with part 15 of the FCC Rules. Operation is subject to the following two conditions: (1) This device may not cause harmful interference, and (2) this device must accept any interference received, including interference that may cause undesired operation.

Changes or modifications not expressly approved by the party responsible for compliance could void the user's authority to operate the equipment.

FCC Interference Statement for Class A EVM devices

NOTE: This equipment has been tested and found to comply with the limits for a Class A digital device, pursuant to part 15 of the FCC Rules. These limits are designed to provide reasonable protection against harmful interference when the equipment is operated in a commercial environment. This equipment generates, uses, and can radiate radio frequency energy and, if not installed and used in accordance with the instruction manual, may cause harmful interference to radio communications. Operation of this equipment in a residential area is likely to cause harmful interference in which case the user will be required to correct the interference at his own expense.

FCC Interference Statement for Class B EVM devices

NOTE: This equipment has been tested and found to comply with the limits for a Class B digital device, pursuant to part 15 of the FCC Rules. These limits are designed to provide reasonable protection against harmful interference in a residential installation. This equipment generates, uses and can radiate radio frequency energy and, if not installed and used in accordance with the instructions, may cause harmful interference to radio communications. However, there is no guarantee that interference will not occur in a particular installation. If this equipment does cause harmful interference to radio or television reception, which can be determined by turning the equipment off and on, the user is encouraged to try to correct the interference by one or more of the following measures:

- Reorient or relocate the receiving antenna.
- Increase the separation between the equipment and receiver.
- Connect the equipment into an outlet on a circuit different from that to which the receiver is connected.
- Consult the dealer or an experienced radio/TV technician for help.

3.2 Canada

3.2.1 For EVMs issued with an Industry Canada Certificate of Conformance to RSS-210 or RSS-247

Concerning EVMs Including Radio Transmitters:

This device complies with Industry Canada license-exempt RSSs. Operation is subject to the following two conditions:

(1) this device may not cause interference, and (2) this device must accept any interference, including interference that may cause undesired operation of the device.

Concernant les EVMs avec appareils radio:

Le présent appareil est conforme aux CNR d'Industrie Canada applicables aux appareils radio exempts de licence. L'exploitation est autorisée aux deux conditions suivantes: (1) l'appareil ne doit pas produire de brouillage, et (2) l'utilisateur de l'appareil doit accepter tout brouillage radioélectrique subi, même si le brouillage est susceptible d'en compromettre le fonctionnement.

Concerning EVMs Including Detachable Antennas:

Under Industry Canada regulations, this radio transmitter may only operate using an antenna of a type and maximum (or lesser) gain approved for the transmitter by Industry Canada. To reduce potential radio interference to other users, the antenna type and its gain should be so chosen that the equivalent isotropically radiated power (e.i.r.p.) is not more than that necessary for successful communication. This radio transmitter has been approved by Industry Canada to operate with the antenna types listed in the user guide with the maximum permissible gain and required antenna impedance for each antenna type indicated. Antenna types not included in this list, having a gain greater than the maximum gain indicated for that type, are strictly prohibited for use with this device.

Concernant les EVMs avec antennes détachables

Conformément à la réglementation d'Industrie Canada, le présent émetteur radio peut fonctionner avec une antenne d'un type et d'un gain maximal (ou inférieur) approuvé pour l'émetteur par Industrie Canada. Dans le but de réduire les risques de brouillage radioélectrique à l'intention des autres utilisateurs, il faut choisir le type d'antenne et son gain de sorte que la puissance isotrope rayonnée équivalente (p.i.r.e.) ne dépasse pas l'intensité nécessaire à l'établissement d'une communication satisfaisante. Le présent émetteur radio a été approuvé par Industrie Canada pour fonctionner avec les types d'antenne énumérés dans le manuel d'usage et ayant un gain admissible maximal et l'impédance requise pour chaque type d'antenne. Les types d'antenne non inclus dans cette liste, ou dont le gain est supérieur au gain maximal indiqué, sont strictement interdits pour l'exploitation de l'émetteur.

3.3 Japan

3.3.1 *Notice for EVMs delivered in Japan:* Please see http://www.tij.co.jp/lstds/ti_ja/general/eStore/notice_01.page 日本国内に輸入される評価用キット、ボードについては、次のところをご覧ください。

<https://www.ti.com/ja-jp/legal/notice-for-evaluation-kits-delivered-in-japan.html>

3.3.2 *Notice for Users of EVMs Considered "Radio Frequency Products" in Japan:* EVMs entering Japan may not be certified by TI as conforming to Technical Regulations of Radio Law of Japan.

If User uses EVMs in Japan, not certified to Technical Regulations of Radio Law of Japan, User is required to follow the instructions set forth by Radio Law of Japan, which includes, but is not limited to, the instructions below with respect to EVMs (which for the avoidance of doubt are stated strictly for convenience and should be verified by User):

1. Use EVMs in a shielded room or any other test facility as defined in the notification #173 issued by Ministry of Internal Affairs and Communications on March 28, 2006, based on Sub-section 1.1 of Article 6 of the Ministry's Rule for Enforcement of Radio Law of Japan,
2. Use EVMs only after User obtains the license of Test Radio Station as provided in Radio Law of Japan with respect to EVMs, or
3. Use of EVMs only after User obtains the Technical Regulations Conformity Certification as provided in Radio Law of Japan with respect to EVMs. Also, do not transfer EVMs, unless User gives the same notice above to the transferee. Please note that if User does not follow the instructions above, User will be subject to penalties of Radio Law of Japan.

【無線電波を送信する製品の開発キットをお使いになる際の注意事項】 開発キットの中には技術基準適合証明を受けていないものがあります。技術適合証明を受けていないものご使用に際しては、電波法遵守のため、以下のいずれかの措置を取っていただく必要がありますのでご注意ください。

1. 電波法施行規則第6条第1項第1号に基づく平成18年3月28日総務省告示第173号で定められた電波暗室等の試験設備でご使用いただく。
2. 実験局の免許を取得後ご使用いただく。
3. 技術基準適合証明を取得後ご使用いただく。

なお、本製品は、上記の「ご使用にあたっての注意」を譲渡先、移転先に通知しない限り、譲渡、移転できないものとします。

上記を遵守頂けない場合は、電波法の罰則が適用される可能性があることをご留意ください。日本テキサス・イ

ンスツルメンツ株式会社

東京都新宿区西新宿 6 丁目 2 4 番 1 号

西新宿三井ビル

3.3.3 *Notice for EVMs for Power Line Communication:* Please see http://www.tij.co.jp/lstds/ti_ja/general/eStore/notice_02.page

電力線搬送波通信についての開発キットをお使いになる際の注意事項については、次のところをご覧ください。 <https://www.ti.com/ja-jp/legal/notice-for-evaluation-kits-for-power-line-communication.html>

3.4 European Union

3.4.1 *For EVMs subject to EU Directive 2014/30/EU (Electromagnetic Compatibility Directive):*

This is a class A product intended for use in environments other than domestic environments that are connected to a low-voltage power-supply network that supplies buildings used for domestic purposes. In a domestic environment this product may cause radio interference in which case the user may be required to take adequate measures.

-
4. *EVM Use Restrictions and Warnings:*
 - 4.1 EVMS ARE NOT FOR USE IN FUNCTIONAL SAFETY AND/OR SAFETY CRITICAL EVALUATIONS, INCLUDING BUT NOT LIMITED TO EVALUATIONS OF LIFE SUPPORT APPLICATIONS.
 - 4.2 User must read and apply the user guide and other available documentation provided by TI regarding the EVM prior to handling or using the EVM, including without limitation any warning or restriction notices. The notices contain important safety information related to, for example, temperatures and voltages.
 - 4.3 *Safety-Related Warnings and Restrictions:*
 - 4.3.1 User shall operate the EVM within TI's recommended specifications and environmental considerations stated in the user guide, other available documentation provided by TI, and any other applicable requirements and employ reasonable and customary safeguards. Exceeding the specified performance ratings and specifications (including but not limited to input and output voltage, current, power, and environmental ranges) for the EVM may cause personal injury or death, or property damage. If there are questions concerning performance ratings and specifications, User should contact a TI field representative prior to connecting interface electronics including input power and intended loads. Any loads applied outside of the specified output range may also result in unintended and/or inaccurate operation and/or possible permanent damage to the EVM and/or interface electronics. Please consult the EVM user guide prior to connecting any load to the EVM output. If there is uncertainty as to the load specification, please contact a TI field representative. During normal operation, even with the inputs and outputs kept within the specified allowable ranges, some circuit components may have elevated case temperatures. These components include but are not limited to linear regulators, switching transistors, pass transistors, current sense resistors, and heat sinks, which can be identified using the information in the associated documentation. When working with the EVM, please be aware that the EVM may become very warm.
 - 4.3.2 EVMs are intended solely for use by technically qualified, professional electronics experts who are familiar with the dangers and application risks associated with handling electrical mechanical components, systems, and subsystems. User assumes all responsibility and liability for proper and safe handling and use of the EVM by User or its employees, affiliates, contractors or designees. User assumes all responsibility and liability to ensure that any interfaces (electronic and/or mechanical) between the EVM and any human body are designed with suitable isolation and means to safely limit accessible leakage currents to minimize the risk of electrical shock hazard. User assumes all responsibility and liability for any improper or unsafe handling or use of the EVM by User or its employees, affiliates, contractors or designees.
 - 4.4 User assumes all responsibility and liability to determine whether the EVM is subject to any applicable international, federal, state, or local laws and regulations related to User's handling and use of the EVM and, if applicable, User assumes all responsibility and liability for compliance in all respects with such laws and regulations. User assumes all responsibility and liability for proper disposal and recycling of the EVM consistent with all applicable international, federal, state, and local requirements.
 5. *Accuracy of Information:* To the extent TI provides information on the availability and function of EVMs, TI attempts to be as accurate as possible. However, TI does not warrant the accuracy of EVM descriptions, EVM availability or other information on its websites as accurate, complete, reliable, current, or error-free.
 6. *Disclaimers:*
 - 6.1 EXCEPT AS SET FORTH ABOVE, EVMS AND ANY MATERIALS PROVIDED WITH THE EVM (INCLUDING, BUT NOT LIMITED TO, REFERENCE DESIGNS AND THE DESIGN OF THE EVM ITSELF) ARE PROVIDED "AS IS" AND "WITH ALL FAULTS." TI DISCLAIMS ALL OTHER WARRANTIES, EXPRESS OR IMPLIED, REGARDING SUCH ITEMS, INCLUDING BUT NOT LIMITED TO ANY EPIDEMIC FAILURE WARRANTY OR IMPLIED WARRANTIES OF MERCHANTABILITY OR FITNESS FOR A PARTICULAR PURPOSE OR NON-INFRINGEMENT OF ANY THIRD PARTY PATENTS, COPYRIGHTS, TRADE SECRETS OR OTHER INTELLECTUAL PROPERTY RIGHTS.
 - 6.2 EXCEPT FOR THE LIMITED RIGHT TO USE THE EVM SET FORTH HEREIN, NOTHING IN THESE TERMS SHALL BE CONSTRUED AS GRANTING OR CONFERRING ANY RIGHTS BY LICENSE, PATENT, OR ANY OTHER INDUSTRIAL OR INTELLECTUAL PROPERTY RIGHT OF TI, ITS SUPPLIERS/LICENSORS OR ANY OTHER THIRD PARTY, TO USE THE EVM IN ANY FINISHED END-USER OR READY-TO-USE FINAL PRODUCT, OR FOR ANY INVENTION, DISCOVERY OR IMPROVEMENT, REGARDLESS OF WHEN MADE, CONCEIVED OR ACQUIRED.
 7. *USER'S INDEMNITY OBLIGATIONS AND REPRESENTATIONS.* USER WILL DEFEND, INDEMNIFY AND HOLD TI, ITS LICENSORS AND THEIR REPRESENTATIVES HARMLESS FROM AND AGAINST ANY AND ALL CLAIMS, DAMAGES, LOSSES, EXPENSES, COSTS AND LIABILITIES (COLLECTIVELY, "CLAIMS") ARISING OUT OF OR IN CONNECTION WITH ANY HANDLING OR USE OF THE EVM THAT IS NOT IN ACCORDANCE WITH THESE TERMS. THIS OBLIGATION SHALL APPLY WHETHER CLAIMS ARISE UNDER STATUTE, REGULATION, OR THE LAW OF TORT, CONTRACT OR ANY OTHER LEGAL THEORY, AND EVEN IF THE EVM FAILS TO PERFORM AS DESCRIBED OR EXPECTED.
-

8. *Limitations on Damages and Liability:*

8.1 *General Limitations.* IN NO EVENT SHALL TI BE LIABLE FOR ANY SPECIAL, COLLATERAL, INDIRECT, PUNITIVE, INCIDENTAL, CONSEQUENTIAL, OR EXEMPLARY DAMAGES IN CONNECTION WITH OR ARISING OUT OF THESE TERMS OR THE USE OF THE EVMS , REGARDLESS OF WHETHER TI HAS BEEN ADVISED OF THE POSSIBILITY OF SUCH DAMAGES. EXCLUDED DAMAGES INCLUDE, BUT ARE NOT LIMITED TO, COST OF REMOVAL OR REINSTALLATION, ANCILLARY COSTS TO THE PROCUREMENT OF SUBSTITUTE GOODS OR SERVICES, RETESTING, OUTSIDE COMPUTER TIME, LABOR COSTS, LOSS OF GOODWILL, LOSS OF PROFITS, LOSS OF SAVINGS, LOSS OF USE, LOSS OF DATA, OR BUSINESS INTERRUPTION. NO CLAIM, SUIT OR ACTION SHALL BE BROUGHT AGAINST TI MORE THAN TWELVE (12) MONTHS AFTER THE EVENT THAT GAVE RISE TO THE CAUSE OF ACTION HAS OCCURRED.

8.2 *Specific Limitations.* IN NO EVENT SHALL TI'S AGGREGATE LIABILITY FROM ANY USE OF AN EVM PROVIDED HEREUNDER, INCLUDING FROM ANY WARRANTY, INDEMNITY OR OTHER OBLIGATION ARISING OUT OF OR IN CONNECTION WITH THESE TERMS, , EXCEED THE TOTAL AMOUNT PAID TO TI BY USER FOR THE PARTICULAR EVM(S) AT ISSUE DURING THE PRIOR TWELVE (12) MONTHS WITH RESPECT TO WHICH LOSSES OR DAMAGES ARE CLAIMED. THE EXISTENCE OF MORE THAN ONE CLAIM SHALL NOT ENLARGE OR EXTEND THIS LIMIT.

9. *Return Policy.* Except as otherwise provided, TI does not offer any refunds, returns, or exchanges. Furthermore, no return of EVM(s) will be accepted if the package has been opened and no return of the EVM(s) will be accepted if they are damaged or otherwise not in a resalable condition. If User feels it has been incorrectly charged for the EVM(s) it ordered or that delivery violates the applicable order, User should contact TI. All refunds will be made in full within thirty (30) working days from the return of the components(s), excluding any postage or packaging costs.

10. *Governing Law:* These terms and conditions shall be governed by and interpreted in accordance with the laws of the State of Texas, without reference to conflict-of-laws principles. User agrees that non-exclusive jurisdiction for any dispute arising out of or relating to these terms and conditions lies within courts located in the State of Texas and consents to venue in Dallas County, Texas. Notwithstanding the foregoing, any judgment may be enforced in any United States or foreign court, and TI may seek injunctive relief in any United States or foreign court.

Mailing Address: Texas Instruments, Post Office Box 655303, Dallas, Texas 75265
Copyright © 2023, Texas Instruments Incorporated

IMPORTANT NOTICE AND DISCLAIMER

TI PROVIDES TECHNICAL AND RELIABILITY DATA (INCLUDING DATASHEETS), DESIGN RESOURCES (INCLUDING REFERENCE DESIGNS), APPLICATION OR OTHER DESIGN ADVICE, WEB TOOLS, SAFETY INFORMATION, AND OTHER RESOURCES "AS IS" AND WITH ALL FAULTS, AND DISCLAIMS ALL WARRANTIES, EXPRESS AND IMPLIED, INCLUDING WITHOUT LIMITATION ANY IMPLIED WARRANTIES OF MERCHANTABILITY, FITNESS FOR A PARTICULAR PURPOSE OR NON-INFRINGEMENT OF THIRD PARTY INTELLECTUAL PROPERTY RIGHTS.

These resources are intended for skilled developers designing with TI products. You are solely responsible for (1) selecting the appropriate TI products for your application, (2) designing, validating and testing your application, and (3) ensuring your application meets applicable standards, and any other safety, security, regulatory or other requirements.

These resources are subject to change without notice. TI grants you permission to use these resources only for development of an application that uses the TI products described in the resource. Other reproduction and display of these resources is prohibited. No license is granted to any other TI intellectual property right or to any third party intellectual property right. TI disclaims responsibility for, and you fully indemnify TI and its representatives against any claims, damages, costs, losses, and liabilities arising out of your use of these resources.

TI's products are provided subject to [TI's Terms of Sale](#), [TI's General Quality Guidelines](#), or other applicable terms available either on ti.com or provided in conjunction with such TI products. TI's provision of these resources does not expand or otherwise alter TI's applicable warranties or warranty disclaimers for TI products. Unless TI explicitly designates a product as custom or customer-specified, TI products are standard, catalog, general purpose devices.

TI objects to and rejects any additional or different terms you may propose.

Copyright © 2026, Texas Instruments Incorporated

Last updated 10/2025