

AN-2115 LM5046 Evaluation Board

1 Introduction

The LM5046 evaluation board is designed to provide the design engineer with a fully functional power converter based on the phase-shifted full-bridge topology to evaluate the LM5046 PWM controller. The evaluation board is provided in an industry standard quarter brick footprint.

The performance of the evaluation board is as follows:

- Input operating range: 36V to 75V
- Output voltage: 3.3V
- Measured efficiency at 48V: 92% @ 30A
- Frequency of operation: 420kHz
- Board size: 2.28 × 1.45 × 0.5 inches
- Load Regulation: 0.2%
- Line Regulation: 0.1%
- Line UVLO (34V/32V on/off)
- Hiccup Mode Current Limit

The printed circuit board consists of 6 layers; 2 ounce copper outer layers and 3 ounce copper inner layers on FR4 material with a total thickness of 0.062 inches. The unit is designed for continuous operation at rated load at <40°C and a minimum airflow of 200 LFM.

2 Theory of Operation

The Phase-Shifted Full-Bridge (PSFB) topology is a derivative of the classic full-bridge topology. When tuned appropriately the PSFB topology achieves zero voltage switching (ZVS) of the primary FETs while maintaining constant switching frequency. The ZVS feature is highly desirable as it reduces both the switching losses and EMI emissions. [Figure 1](#) illustrates the circuit arrangement for the PSFB topology. The power transfer mode of the PSFB topology is similar to the hard switching full-bridge, that is, when the FETs in the diagonal of the bridge are turned-on (Q1 and Q3 or Q2 and Q4), it initiates a power transfer cycle. At the end of the power transfer cycle, PWM turns off the switch Q3 or Q4 depending on the phase with a pulse width determined by the input and output voltages and the transformer turns ratio. In the freewheel mode, unlike the classic full-bridge where all the four primary FETs are off, in the PSFB topology the primary of the power transformer is shorted by activating either both the top FETs (Q1 and Q4) or both the bottom FETs (Q2 and Q3) alternatively. In a PSFB topology, the primary switches are turned on alternatively energizing the windings in such a way that the flux swings back and forth in the first and the third quadrants of the B-H curve. The use of two quadrants allows better utilization of the core resulting in a smaller core volume compared to the single-ended topologies. Further, the ZVS of the primary FETs results in low EMI compared to the conventional hard-switching full-bridge topology.

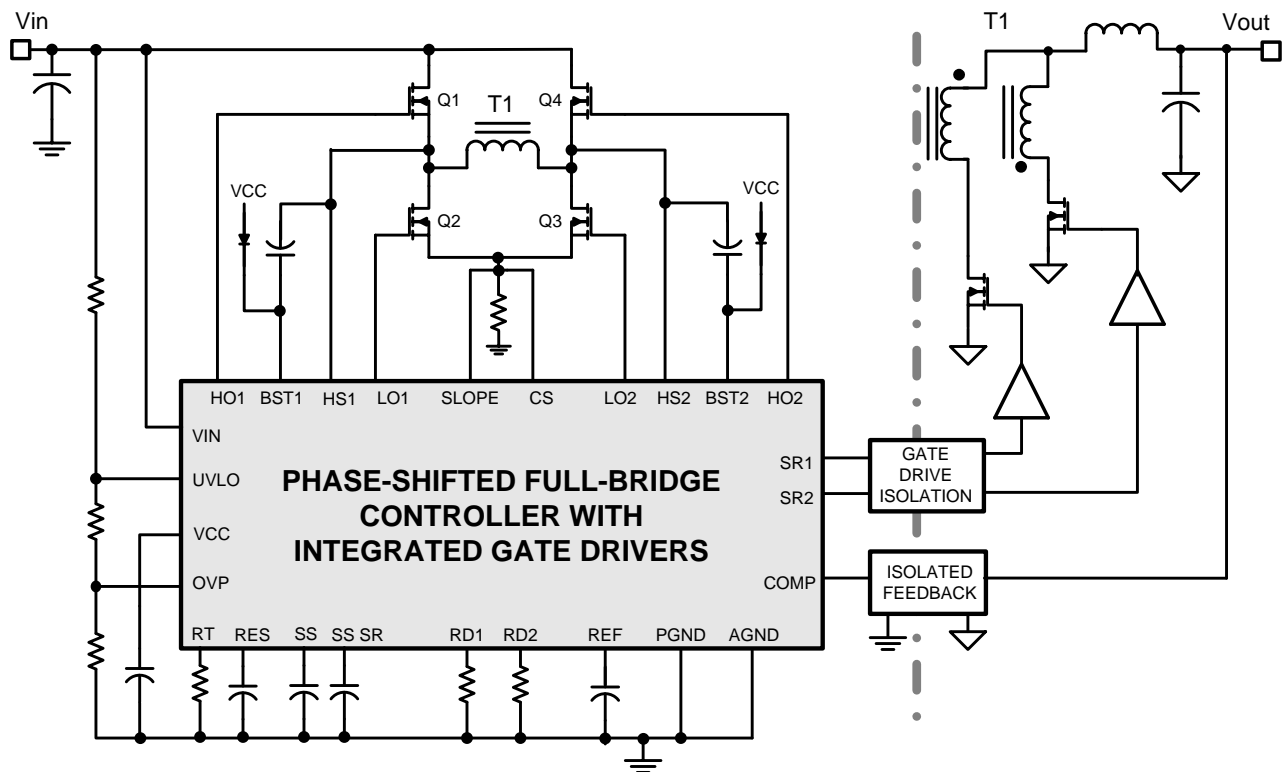


Figure 1. Simplified Full-Bridge Converter

The secondary side employs synchronous rectification scheme, which is controlled by the LM5046. In addition to the basic soft-start already described, the LM5046 contains a second soft-start function that gradually turns on the synchronous rectifiers to their steady-state duty cycle. This function keeps the synchronous rectifiers off until the error amplifier on the secondary side soft-starts, allowing a linear start-up of the output voltage even into pre-biased loads. Then the SR output duty cycle is gradually increased to prevent output voltage disturbances due to the difference in the voltage drop between the body diode and the channel resistance of the synchronous MOSFETs. Feedback from the output is processed by an amplifier and reference, generating an error voltage, which is coupled back to the primary side control through an opto-coupler. The LM5046 evaluation board employs peak current mode control and a standard “type II” network is used for the compensator.

3 Powering and Loading Considerations

When applying power to the LM5046 evaluation board certain precautions need to be followed. A misconnection can damage the assembly.

4 Proper Connections

When operated at low input voltages the evaluation board can draw up to 3.5A of current at full load. The maximum rated output current is 30A. Be sure to choose the correct connector and wire size when attaching the source supply and the load. Monitor the current into and out of the evaluation board and monitor the voltage directly at the output terminals of the evaluation board, see [Figure 2](#). The voltage drop across the load connecting wires will give inaccurate measurements. This is especially true for accurate efficiency measurements.

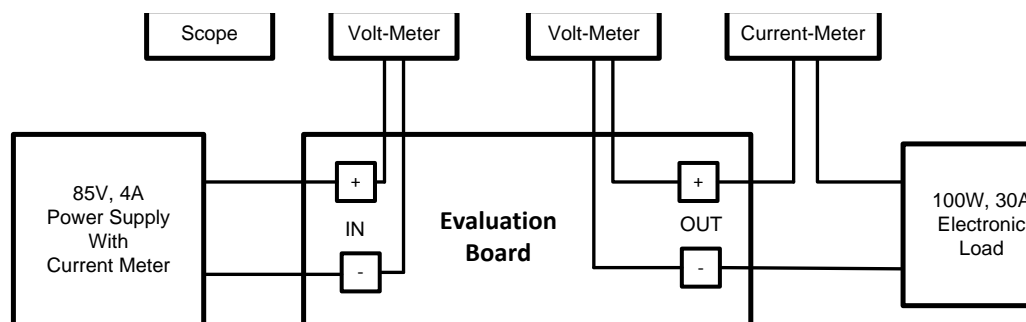


Figure 2. Evaluation Board Monitoring

5 Source Power

The evaluation board can be viewed as a constant power load. At low input line voltage (36V) the input current can reach 3.5A, while at high input line voltage (72V) the input current will be approximately 1.5A. Therefore, to fully test the LM5046 evaluation board a DC power supply capable of at least 85V and 4A is required. The power supply must have adjustments for both voltage and current.

The power supply and cabling must present low impedance to the evaluation board. Insufficient cabling or a high impedance power supply will droop during power supply application with the evaluation board inrush current. If large enough, this droop will cause a chattering condition upon power up. This chattering condition is an interaction with the evaluation board under voltage lockout, the cabling impedance and the inrush current.

6 Loading

An appropriate electronic load, with specified operation down to 3.0V minimum, is desirable. The resistance of a maximum load is 0.11Ω. The high output current requires thick cables! If resistor banks are used there are certain precautions to be taken. The wattage and current ratings must be adequate for a 30A, 100W supply. Monitor both current and voltage at all times. Ensure that there is sufficient cooling provided for the load.

7 Air Flow

Full power loading should never be attempted without providing the specified 200 LFM of air flow over the evaluation board. A stand-alone fan should be provided.

8 Powering Up

It is suggested that the load be kept low during the first power up. Set the current limit of the source supply to provide about 1.5 times the wattage of the load. As soon as the appropriate input voltage is supplied to the board, check for 3.3 volts at the output.

A most common occurrence, that will prove unnerving, is when the current limit set on the source supply is insufficient for the load. The result is similar to having the high source impedance referred to earlier. The interaction of the source supply folding back and the evaluation board going into undervoltage shutdown will start an oscillation, or chatter, that may have undesirable consequences.

A quick efficiency check is the best way to confirm that everything is operating properly. If something is amiss you can be reasonably sure that it will affect the efficiency adversely. Few parameters can be incorrect in a switching power supply without creating losses and potentially damaging heat.

9 Over Current Protection

The evaluation board is configured with hiccup over-current protection. In the event of an output overload (approximately 38A) the unit will discharge the SS capacitor, which disables the power stage. After a delay, programmed by the RES capacitor, the SS capacitor is released. If the overload condition persists, this process is repeated. Thus, the converter will be in a loop of shot bursts followed by a sleep time in continuous overload conditions. The sleep time reduces the average input current drawn by the power converter in such a condition and allows the power converter to cool down.

10 Performance Characteristics

Once the circuit is powered up and running normally, the output voltage is regulated to 3.3V with the accuracy determined by the feedback resistors and the voltage reference. The frequency of operation is selected to be 420 kHz, which is a good compromise between board size and efficiency. See Figure 3 for efficiency curves.

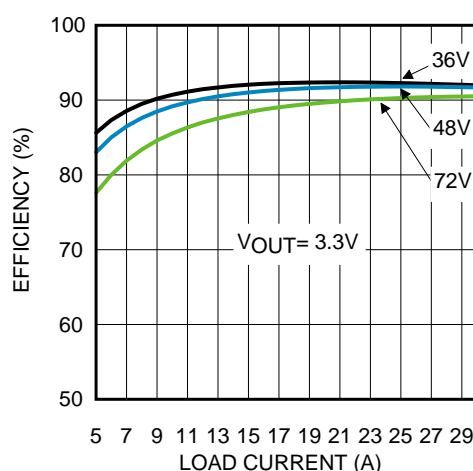
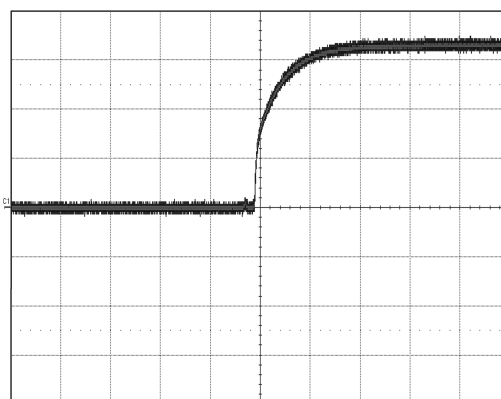


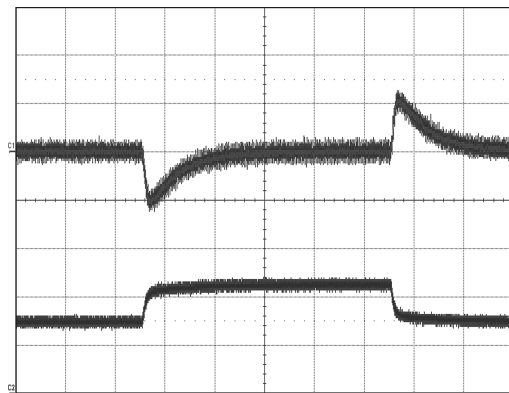
Figure 3. Application Board Efficiency

When applying power to the LM5046 evaluation board a certain sequence of events occurs. Soft-start capacitor values and other components allow for a minimal output voltage for a short time until the feedback loop can stabilize without overshoot. Figure 4 shows the output voltage during a typical start-up with a 48V input and a load of 25A. There is no overshoot during start-up.



Conditions: Input Voltage = 48V
Output Current = 25A
Trace 1: Output Voltage Volts/div = 1V
Horizontal Resolution = 5.0 ms/div

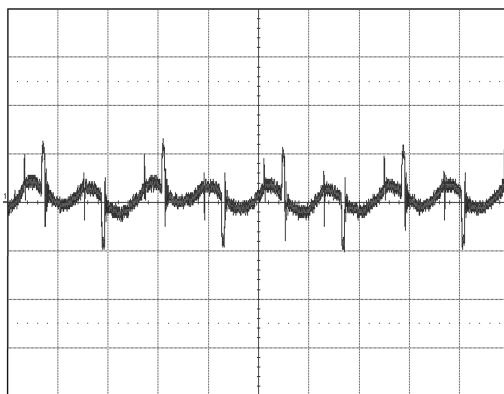
Figure 4. Soft-Start



Conditions: Input Voltage = 48V
Output Current = 15A to 22.5A to 15A
Upper Trace: Output Voltage Volts/div = 100mV
Lower Trace: Output Current = 10A/div
Horizontal Resolution = 200 μ s/div

Figure 5. Transient Response

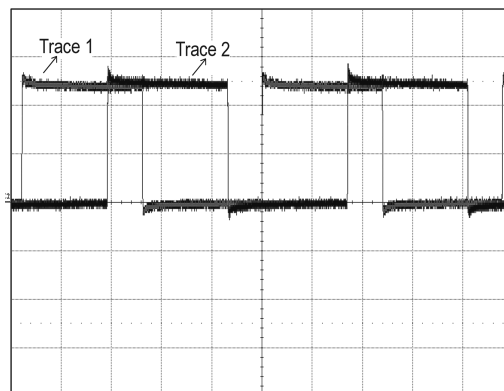
Figure 6 shows typical output ripple seen directly across the output capacitor, for an input voltage of 48V and a load of 30A. This waveform is typical of most loads and input voltages.



Conditions: Input Voltage = 48V, Output Current = 30A
Trace 1: Output Voltage Volts/div = 20mV
Bandwidth Limit = 20MHz
Horizontal Resolution = 2 μ s/div

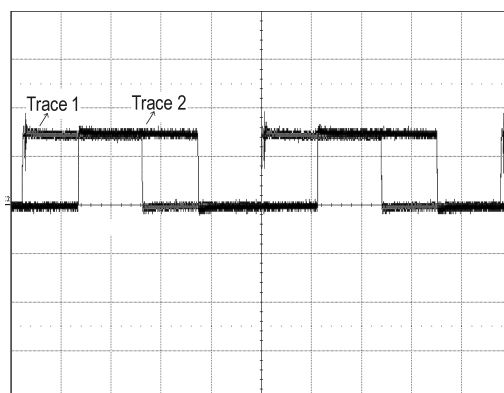
Figure 6. Output Ripple

Figure 7 and Figure 8 show the typical SW node voltage waveforms with a 30A load. Figure 7 shows an input voltage represents an input voltage of 48V and Figure 8 represents an input voltage of 72V. When one SW node is at the input voltage and the other SW node at the GND, it implies power transfer cycle, that is, FETs in the diagonal, Q1 and Q3, or Q2 and Q4, are activated. Further, when both the SW nodes are the same potential, that is, either at the input voltage or at the GND, it implies freewheeling mode.



Conditions: Input Voltage = 48V
Output Current = 30A
Trace 1: SW1 Node (Q2 Drain) Voltage Volts/div = 20V
Trace 2: SW2 Node (Q3 Drain) Voltage Volts/div = 20V
Horizontal Resolution = 1 μ s/div

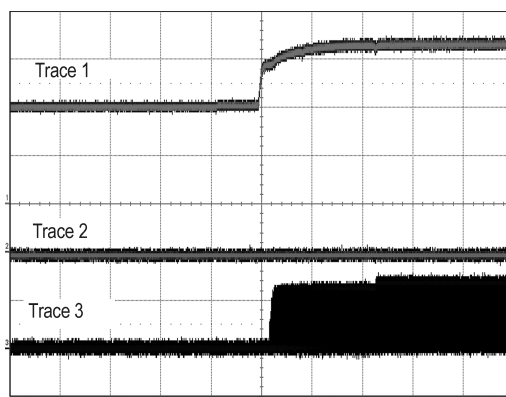
Figure 7. 48V Switch Node Waveforms



Conditions: Input Voltage = 72V
Output Current = 30A
Trace 1: SW1 Node (Q2 Drain) Voltage Volts/div = 50V
Trace 1: SW2 Node (Q3 Drain) Voltage Volts/div = 50V
Horizontal Resolution = 1 μ s/div

Figure 8. 72V Switch Node Waveforms

Figure 9 shows a typical startup of the LM5046 evaluation board into a 2V pre-biased load. Trace 2 represents the output current that is monitored between the output caps of the power converter and the 2V pre-bias voltage supply. It can be inferred from the Trace 2 that the SR MOSFETs do not sink any current during the power-up into pre-biased load.



Conditions: Input Voltage = 48V, Output Pre-Bias = 2V
Trace 1 (Channel 1): Output Voltage Volts/div = 1V
Trace 2 (Channel 2): Output Current Amps/div = 200mA
Trace 3 (Channel 3): SR Gate Voltage Volts/div = 5V

Figure 9. Soft-Start into 2V Pre-Biased Load

11 Bill of Materials

Item	Designator	Description	Manufacturer	Part Number
1	AA	Printed Circuit Board	TBD	
2	C1, C2, C3, C4	Ceramic 2.2uF X7R 100V 10% 1210	MuRata	GRM32ER72A225KA35L
3	C35	Ceramic 4.7uF X7R 16V 10% 0805	MuRata	GRM21BR71C475KA73L
4	C5	Ceramic 2.2uF X7R 16V 10% 0805	MuRata	GRM21BR71C225KA12L
5	C7, C8	Ceramic 2.2uF X5R 25V 10% 0805	TDK	GRM21BR71E225KA73L
6	C9	CAP CERM 1uF X7R 50V 10% 0805	MuRata	GRM21BR71H105KA12L
7	C10, C11	Ceramic 1uF X7R 16V 10% 0603	TDK	C1608X7R1C105K
8	C12, C15, C21, C32	Ceramic 0.1uF X7R 25V 10% 0603	AVX	06033C104KAT2A
9	C13	CAP CERM X7R 2000V 2700pF 10%	Kemet	C1808C272KGRACU
10	C14	CAP CERM 0.1uF 100V +/-10% X7R 0603	MuRata	GRM188R72A104KA35D
11	C16, C23	Ceramic C0G/NP0 470pF 100V 10% 1206	AVX	12061A471KAT2A
12	C17, C39	CAP 330uF 4V AL 4V 20% 0.012 Ohm ESR	Panasonic	EEF-UE0G331R
13	C18, C19, C20	CAP CERM 47uF X7R 6.3V 10%	MuRata	GCM32ER70J476KE19L
14	C22	Ceramic 0.022uF 16V +/-10% X7R 0402	TDK	C1005X7R1C223K

Item	Designator	Description	Manufacturer	Part Number
15	C34, C36	Ceramic 1000pF 25V +/-5% C0G/NP0 0402	TDK	C1005C0G1E102J
16	C26, C27	Ceramic 1uF 16V +/-20% X7R 0805	MuRata	GRM21BR71C105MA01L
17	C28, R20, D4, L3	NU	NU	NU
18	C29	Ceramic 47pF 50V +/-5% C0G/NP0 0402	MuRata	GRM1555C1H470JZ01
19	C30, C40	Ceramic 100pF C0G/NP0 50V 5% 0603	TDK	C1608C0G1H101J
20	C24	CAP CERM 0.056uF 6.3V +/-10% X7R 0402	Kemet	C0402C563K9RACTU
21	C25, C31, C37, C33	CAP CERM 0.01uF 16V +/-10% X7R 0402	TDK	C1005X7R1C1103K
22	C38	CAP CERM 0.47uF 6.3V +/-20% X5R 0402	TDK	C1005X5R0J474K
23	D1	Vr=100V Ir=150mA Vf=0.7V Schottky	Vishay	BAT46JFILM
24	D2	Vr=30V Io=1A Vf=0.38V	Diodes Inc	B130LAW-7-F
25	D3, D7, D10	Vr=40V Io=0.2A Vf=0.65V Common Cathode	Central Semiconductor	CMP5H-3CE
26	D5	SMT 5.1V Zener Diode	Diodes Inc	MMSZ5231B
27	D6	SMT 8.2V Zener Diode	Central Semiconductor	CMHZ4694
28	D8, D12	Vr=100V Io=1A Vf=0.77V Schottky diode	Diodes Inc	DFLS1100-7
29	D9, D13	Vr=40V Io=0.2A Vf=0.65V Common Anode	Central Semiconductor	CMP5H-3AE
30	D11	SMT 11V Zener Diode	Central Semiconductor	CMHZ4698
31	D16	Vr=30V Io=0.2A Vf=0.7V Schottky	Diodes Inc	BAT54WS-7-F
32	D17	Zener Diode 4.7V 250mW SOD-323	Central Semiconductor	CMDZ4L7
33	L1	Shielded Drum Core 2.2uH 4.15A 0.0165 Ohm	Coiltronics	DR73-2R2-R
34	L2	Shielded Drum Core 0.08A 11 Ohm	Coilcraft Inc	LPS5030-225MLB
35	L4	Inductor, Shielded E Core, Ferrite, 800nH 45A 0.0009 Ohm SMD	Coilcraft	SER2010-801MLB
36	P1, P3, P5, P6	PCB Pin	Mill-Max	3104-2-00-34-00-00-08-0
37	P2	Test Point, SMT, Miniature	Keystone Electronics	5015
38	P4, P7	PCB Pin	Mill-Max	3231-2-00-34-00-00-08-0
39	Q1, Q3	NPN 2A 45V	Diodes Inc	FCX690BTA
40	Q2	PNP 0.2A 40V	Central Semiconductor	CMPT3906
41	Q4, Q5, Q10, Q11	32A 18nC rDS(on) @ 4.5V = .002 Ohms	Texas Instruments	CSD17303Q5
42	Q6, Q7, Q8, Q9	MOSFET N-CH 100V 9.3A PQFN 8L 5x6 A	International Rectifier	IRFH5053TRPBF
43	R1	RES 10 Ohm 1% 0.125W 0805	Vishay-Dale	CRCW080510R0FKEA
44	R2, R28, R33, R36	RES 10K Ohm 1% 0.063W 0402	Vishay-Dale	CRCW040210K0FKED
45	R3, R4	RES 5.1K Ohm 5% 0.125W 0805	Panasonic	ERJ-6GEYJ512V
46	R5	RES 1.0K Ohm 5% 0.125W 0805	Vishay-Dale	CRCW08051K00FKEA
47	R6	RES 100K Ohm 1% 0.125W 0805	Vishay-Dale	CRCW0805100KFKEA

Item	Designator	Description	Manufacturer	Part Number
48	R7	RES 2.61K Ohm1% 0.063W 0402	Vishay-Dale	CRCW04022K61KFKED
49	R8	RES 20 Ohm 1/8W 5% 0805 SMD	Panasonic	ERJ-6GEYJ200V
50	R9	RES 1.58K Ohm, 1% 0.063W 0402	Vishay-Dale	CRCW04021K58FKED
51	R10, R12	RES 0 Ohm, 5% 0.063W 0402	Yageo America	RC0402JR-070RL
52	R11, R17	RES 4.99 Ohm, 1% 0.25W 1206	Vishay-Dale	CRCW12064R99FNEA
53	R13	RES 3.4K Ohm, 1% 0.063W 0402	Vishay-Dale	CRCW0402340FKED
54	R14	RES 24K 5% 0.063W 0402	Vishay-Dale	CRCW040224K0JNED
55	R15, R16	RES 20K Ohm, 1% 0.063W 0402	Vishay-Dale	CRCW040220K0FKED
56	R18	RES 15.0 Ohm 1% 0.063W 0402	Vishay-Dale	CRCW040215R0FKED
57	R19, R31	RES 10.0 Ohm, 1% 0.063W 0402	Vishay-Dale	CRCW040210R0FKED
58	R21	RES 1.0K Ohm 1/16W 5% 0402 SMD	Vishay-Dale	CRCW04021K00JNED
59	R22	RES 25.5K Ohm,1% 0.063W 0402	Vishay-Dale	CRCW040225K5FKED
60	R23	RES 499 Ohm, 1% 0.063W 0402	Vishay-Dale	CRCW0402499RFKED
61	R24	RES 5.11K Ohm, 1% 0.063W 0402	Vishay-Dale	CRCW04025K11FKED
62	R25, R26	NU	Vishay-Dale	NU
63	R27	RES 47 Ohm .25W 5% 0603 SMD	Vishay-Dale	CRCW060347R0JNEAHP
64	R32	RES 100 Ohm, 1% 0.063W 0402	Vishay-Dale	CRCW0402100RFKED
65	R29	RES 15K Ohm,1% 0.063W 0402	Vishay-Dale	CRCW040215K0FKED
66	R30	RES 1.82K Ohm,1% 0.063W 0402	Vishay-Dale	CRCW04021K82FKED
67	R37	RES 0.0 Ohm, 5% 0.063W 0402	Vishay-Dale	CRCW04020000Z0ED
68	T1	High Frequency Planar Transformer	Pulse Engineering	PA0876.003NL
69	T2	SMT Current Sense Transformer	Pulse Engineering	PA1005.100NL
70	U1	Phase Shifted Full-Bridge PWM Controller	Texas Instruments	LM5046
71	U2	Dual 5A Compound Gate Driver with Negative Output Voltage Capability	Texas Instruments	LM5110
72	U3	Low Input Current, High CTR Photocoupler	NEC	PS2811-1-M-A
73	U4	RRIO, High Output Current & Unlimited Cap Load Op Amp in SOT23-5	Texas Instruments	LM8261
74	U5	Precision Micropower Shunt Voltage Reference	Texas Instruments	LM4041
75	U6	ISOPro Low-Power Dual-Channel Digital Isolator	Silicon Laboratories Inc	Si8420BB-D-IS

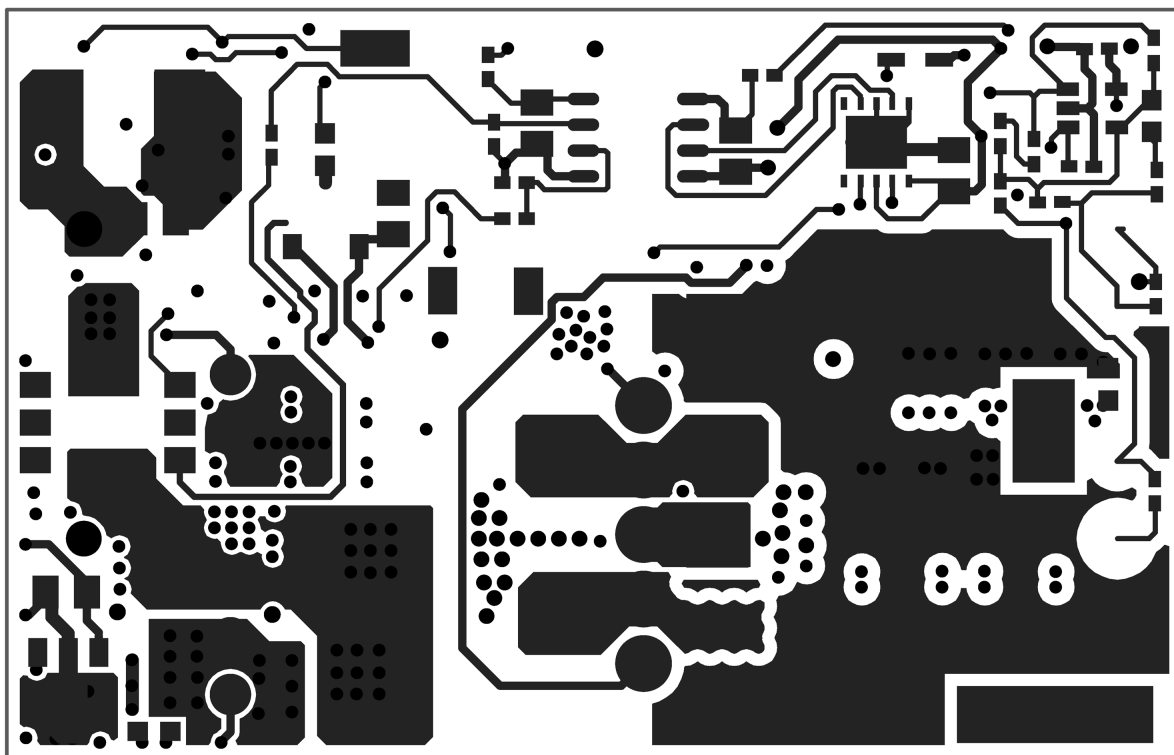


Figure 12. Layer 1 (Top Side)

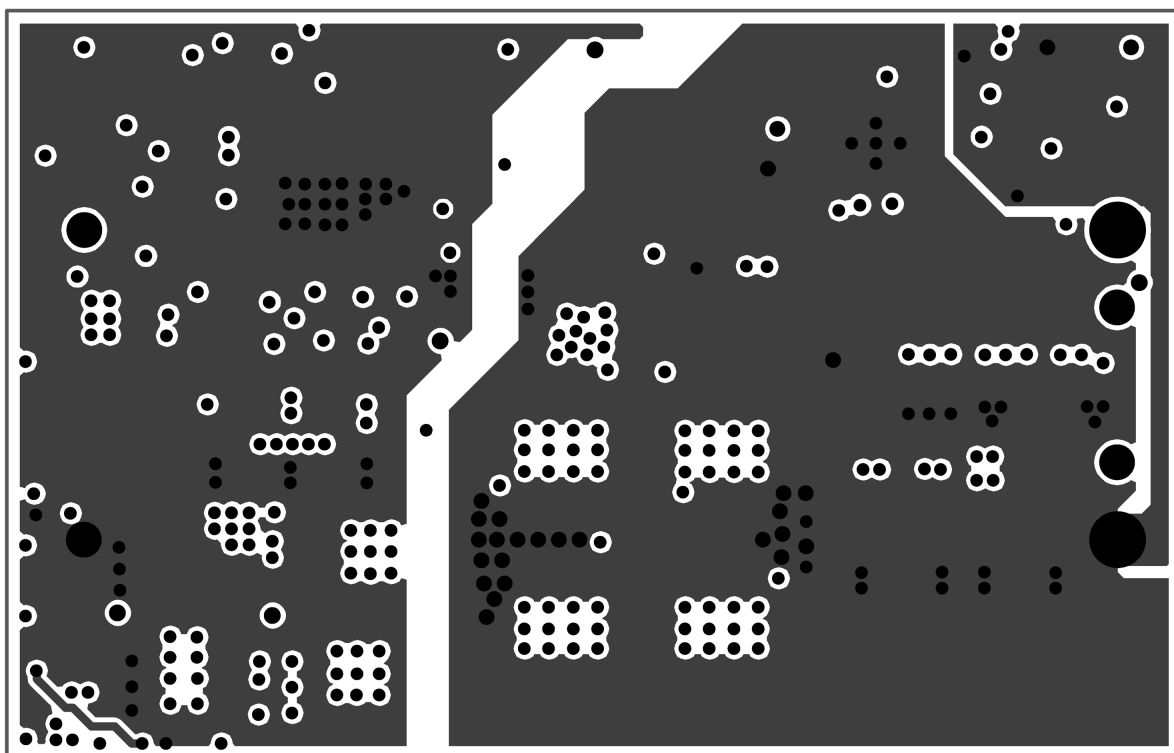


Figure 13. Layer 2

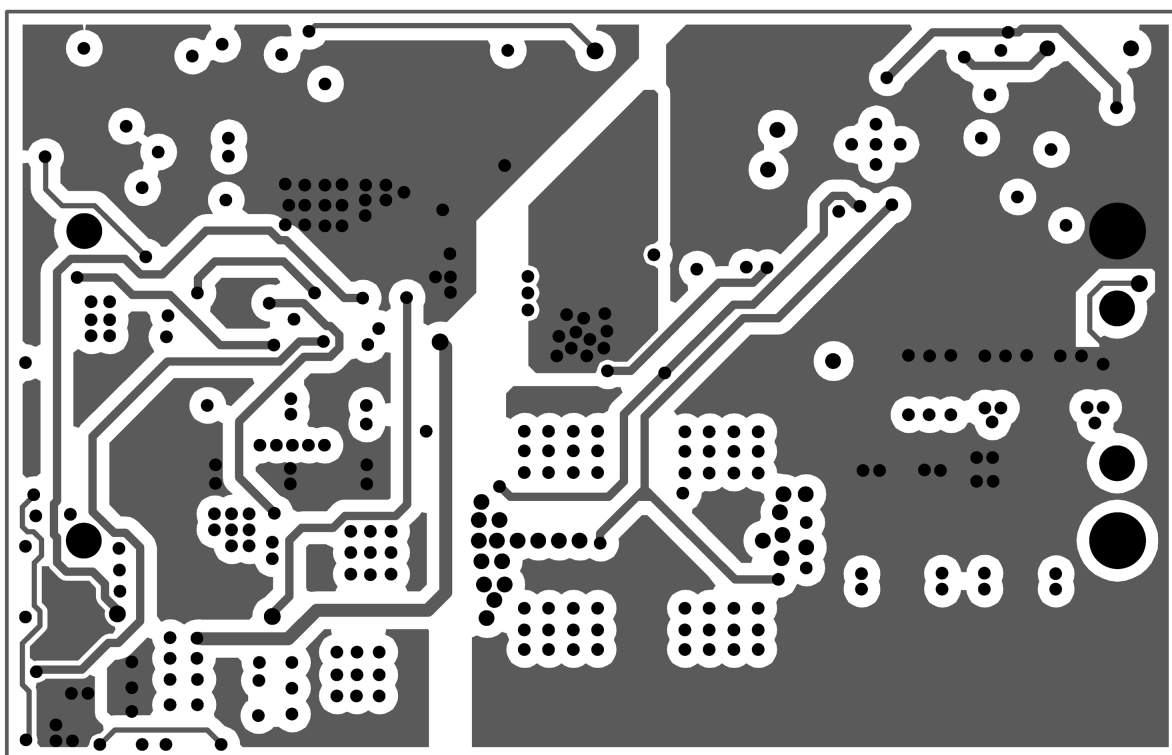


Figure 14. Layer 3

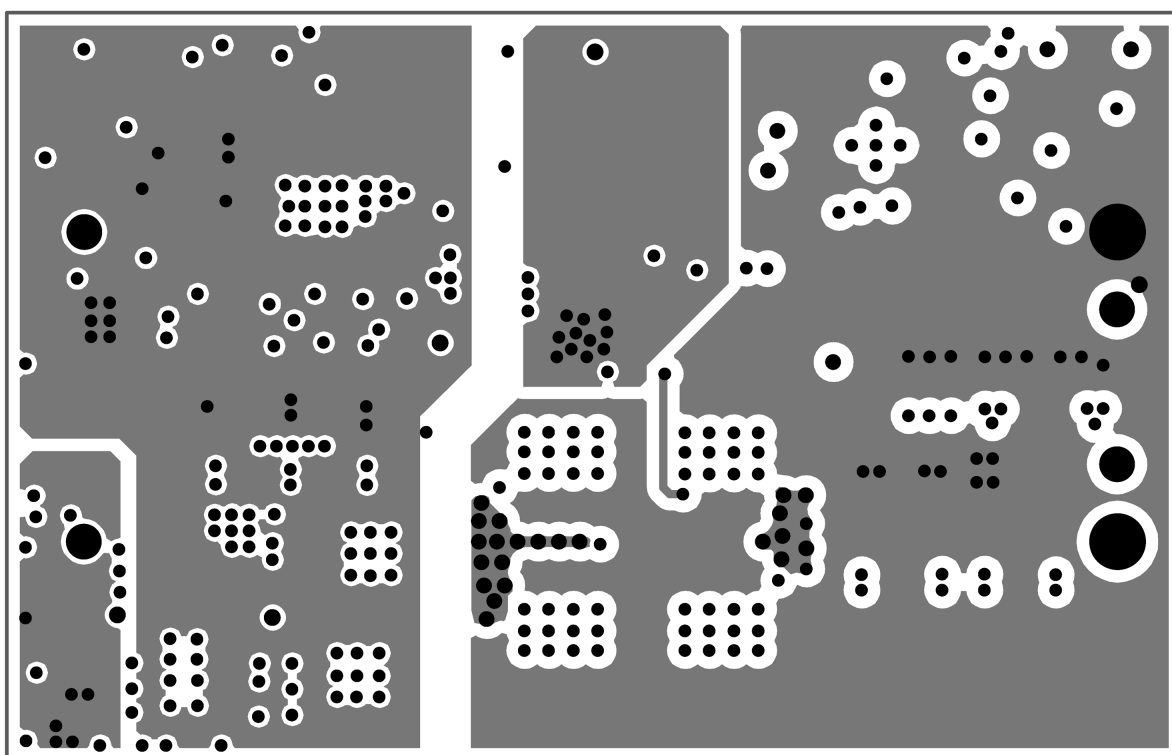


Figure 15. Layer 4

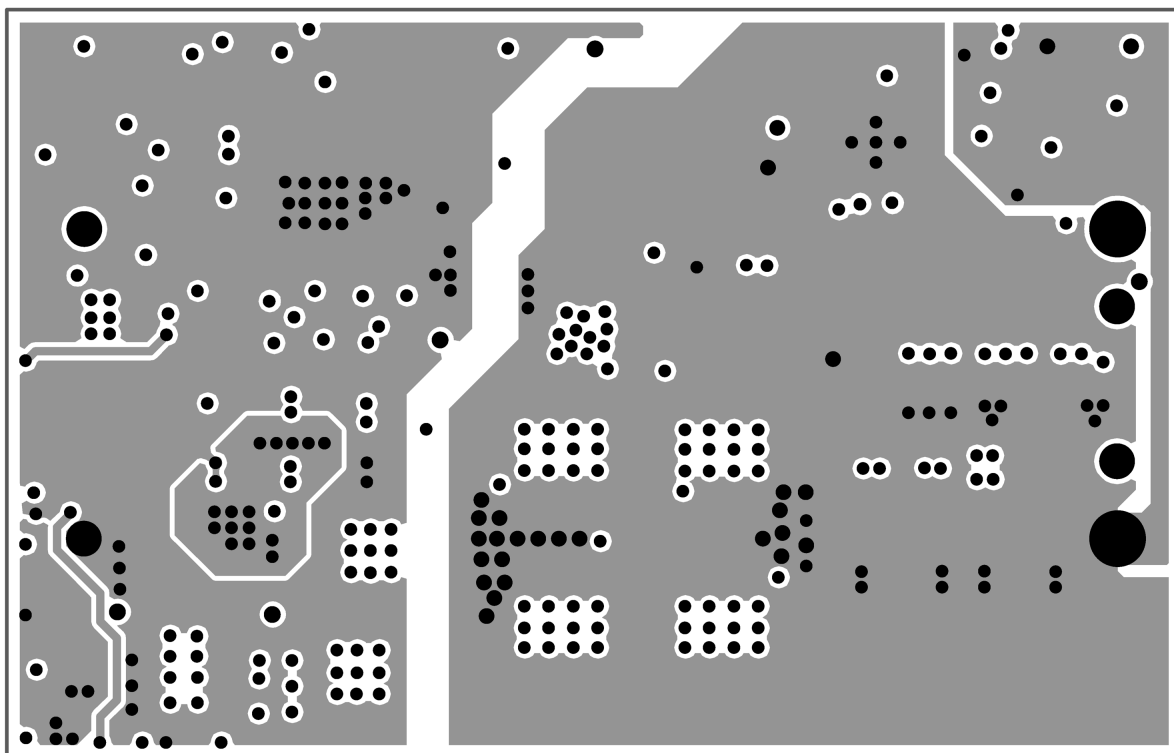


Figure 16. Layer 5

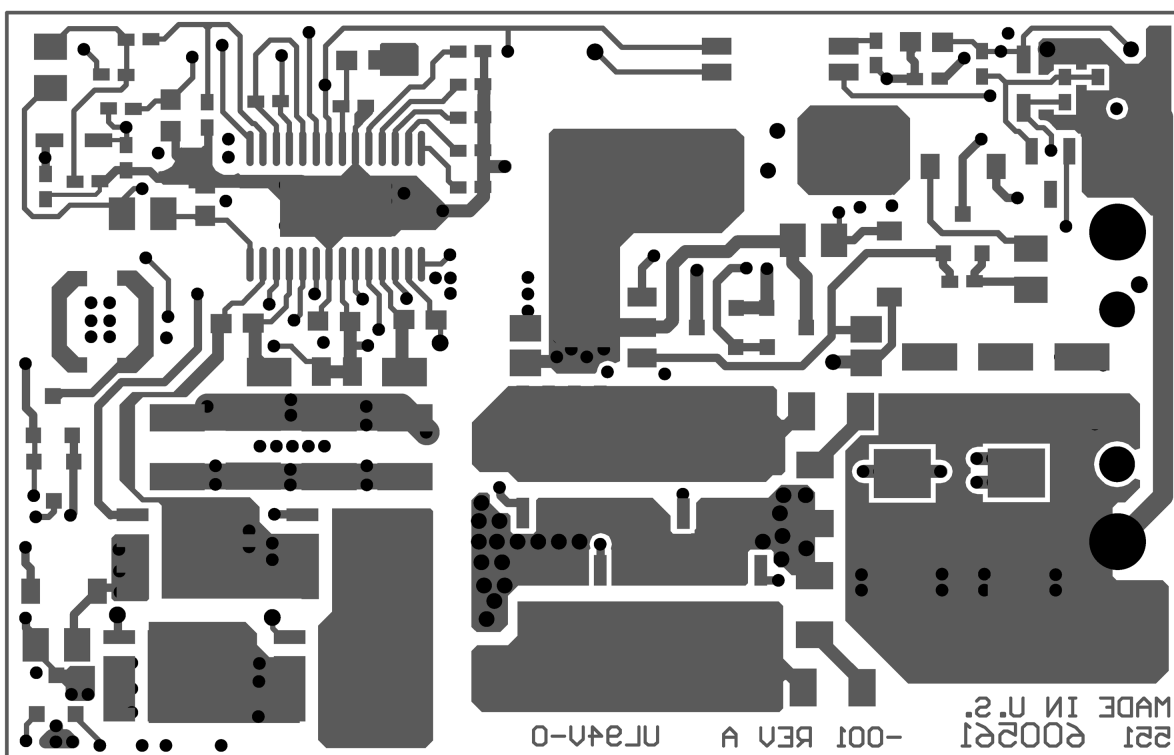


Figure 17. Layer 6 (Bottom Side)

13 Application Circuit

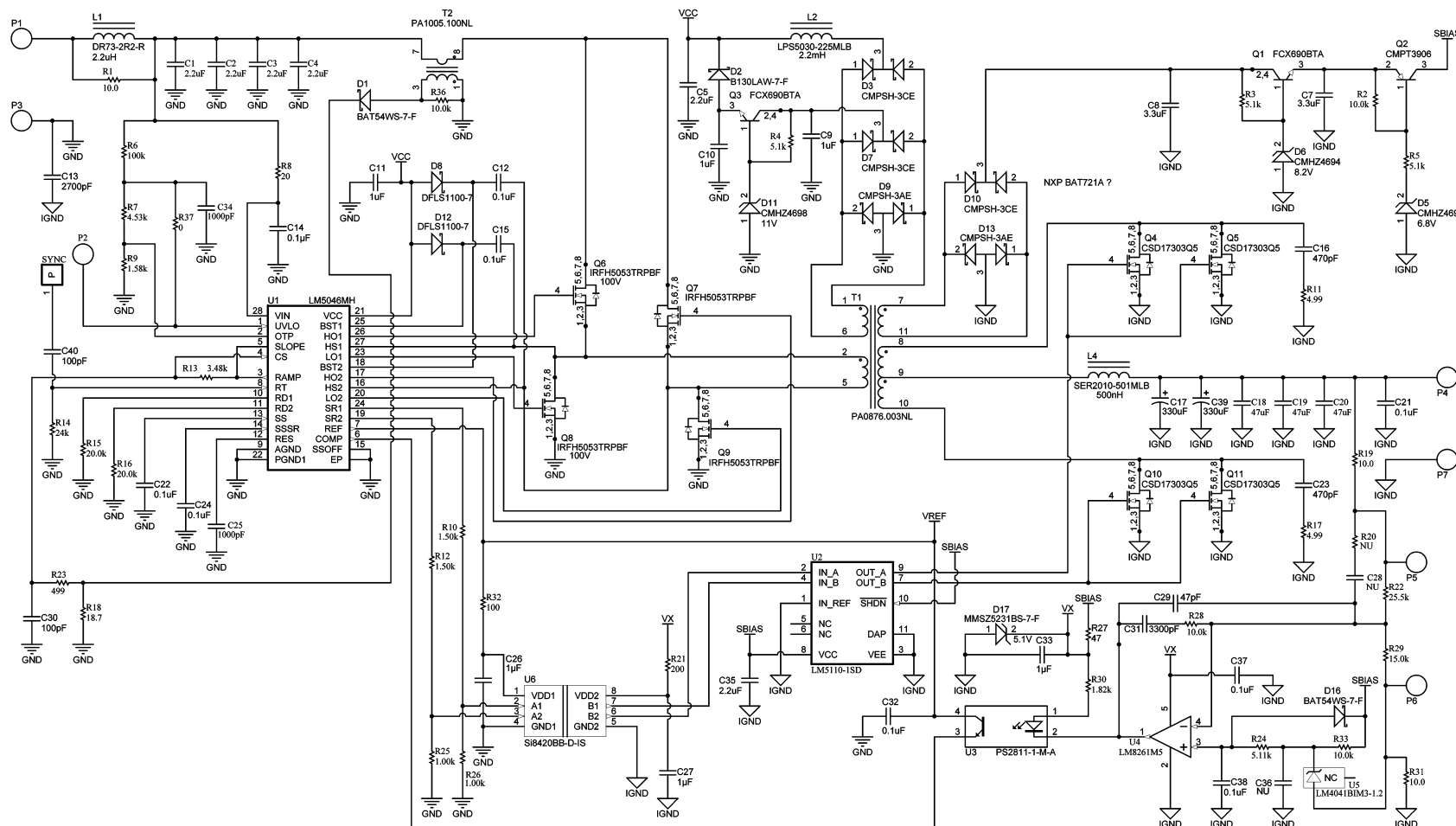


Figure 18. Application Circuit: Input 36V to 75V, Output 3.3V at 30A

STANDARD TERMS FOR EVALUATION MODULES

1. *Delivery:* TI delivers TI evaluation boards, kits, or modules, including any accompanying demonstration software, components, and/or documentation which may be provided together or separately (collectively, an "EVM" or "EVMs") to the User ("User") in accordance with the terms set forth herein. User's acceptance of the EVM is expressly subject to the following terms.
 - 1.1 EVMs are intended solely for product or software developers for use in a research and development setting to facilitate feasibility evaluation, experimentation, or scientific analysis of TI semiconductors products. EVMs have no direct function and are not finished products. EVMs shall not be directly or indirectly assembled as a part or subassembly in any finished product. For clarification, any software or software tools provided with the EVM ("Software") shall not be subject to the terms and conditions set forth herein but rather shall be subject to the applicable terms that accompany such Software
 - 1.2 EVMs are not intended for consumer or household use. EVMs may not be sold, sublicensed, leased, rented, loaned, assigned, or otherwise distributed for commercial purposes by Users, in whole or in part, or used in any finished product or production system.
2. *Limited Warranty and Related Remedies/Disclaimers:*
 - 2.1 These terms do not apply to Software. The warranty, if any, for Software is covered in the applicable Software License Agreement.
 - 2.2 TI warrants that the TI EVM will conform to TI's published specifications for ninety (90) days after the date TI delivers such EVM to User. Notwithstanding the foregoing, TI shall not be liable for a nonconforming EVM if (a) the nonconformity was caused by neglect, misuse or mistreatment by an entity other than TI, including improper installation or testing, or for any EVMs that have been altered or modified in any way by an entity other than TI, (b) the nonconformity resulted from User's design, specifications or instructions for such EVMs or improper system design, or (c) User has not paid on time. Testing and other quality control techniques are used to the extent TI deems necessary. TI does not test all parameters of each EVM. User's claims against TI under this Section 2 are void if User fails to notify TI of any apparent defects in the EVMs within ten (10) business days after delivery, or of any hidden defects with ten (10) business days after the defect has been detected.
 - 2.3 TI's sole liability shall be at its option to repair or replace EVMs that fail to conform to the warranty set forth above, or credit User's account for such EVM. TI's liability under this warranty shall be limited to EVMs that are returned during the warranty period to the address designated by TI and that are determined by TI not to conform to such warranty. If TI elects to repair or replace such EVM, TI shall have a reasonable time to repair such EVM or provide replacements. Repaired EVMs shall be warranted for the remainder of the original warranty period. Replaced EVMs shall be warranted for a new full ninety (90) day warranty period.

WARNING

Evaluation Kits are intended solely for use by technically qualified, professional electronics experts who are familiar with the dangers and application risks associated with handling electrical mechanical components, systems, and subsystems.

User shall operate the Evaluation Kit within TI's recommended guidelines and any applicable legal or environmental requirements as well as reasonable and customary safeguards. Failure to set up and/or operate the Evaluation Kit within TI's recommended guidelines may result in personal injury or death or property damage. Proper set up entails following TI's instructions for electrical ratings of interface circuits such as input, output and electrical loads.

NOTE:

EXPOSURE TO ELECTROSTATIC DISCHARGE (ESD) MAY CAUSE DEGRADATION OR FAILURE OF THE EVALUATION KIT; TI RECOMMENDS STORAGE OF THE EVALUATION KIT IN A PROTECTIVE ESD BAG.

3 Regulatory Notices:

3.1 United States

3.1.1 Notice applicable to EVMs not FCC-Approved:

FCC NOTICE: This kit is designed to allow product developers to evaluate electronic components, circuitry, or software associated with the kit to determine whether to incorporate such items in a finished product and software developers to write software applications for use with the end product. This kit is not a finished product and when assembled may not be resold or otherwise marketed unless all required FCC equipment authorizations are first obtained. Operation is subject to the condition that this product not cause harmful interference to licensed radio stations and that this product accept harmful interference. Unless the assembled kit is designed to operate under part 15, part 18 or part 95 of this chapter, the operator of the kit must operate under the authority of an FCC license holder or must secure an experimental authorization under part 5 of this chapter.

3.1.2 For EVMs annotated as FCC – FEDERAL COMMUNICATIONS COMMISSION Part 15 Compliant:

CAUTION

This device complies with part 15 of the FCC Rules. Operation is subject to the following two conditions: (1) This device may not cause harmful interference, and (2) this device must accept any interference received, including interference that may cause undesired operation.

Changes or modifications not expressly approved by the party responsible for compliance could void the user's authority to operate the equipment.

FCC Interference Statement for Class A EVM devices

NOTE: This equipment has been tested and found to comply with the limits for a Class A digital device, pursuant to part 15 of the FCC Rules. These limits are designed to provide reasonable protection against harmful interference when the equipment is operated in a commercial environment. This equipment generates, uses, and can radiate radio frequency energy and, if not installed and used in accordance with the instruction manual, may cause harmful interference to radio communications. Operation of this equipment in a residential area is likely to cause harmful interference in which case the user will be required to correct the interference at his own expense.

FCC Interference Statement for Class B EVM devices

NOTE: This equipment has been tested and found to comply with the limits for a Class B digital device, pursuant to part 15 of the FCC Rules. These limits are designed to provide reasonable protection against harmful interference in a residential installation. This equipment generates, uses and can radiate radio frequency energy and, if not installed and used in accordance with the instructions, may cause harmful interference to radio communications. However, there is no guarantee that interference will not occur in a particular installation. If this equipment does cause harmful interference to radio or television reception, which can be determined by turning the equipment off and on, the user is encouraged to try to correct the interference by one or more of the following measures:

- *Reorient or relocate the receiving antenna.*
- *Increase the separation between the equipment and receiver.*
- *Connect the equipment into an outlet on a circuit different from that to which the receiver is connected.*
- *Consult the dealer or an experienced radio/TV technician for help.*

3.2 Canada

3.2.1 For EVMs issued with an Industry Canada Certificate of Conformance to RSS-210 or RSS-247

Concerning EVMs Including Radio Transmitters:

This device complies with Industry Canada license-exempt RSSs. Operation is subject to the following two conditions:

(1) this device may not cause interference, and (2) this device must accept any interference, including interference that may cause undesired operation of the device.

Concernant les EVMs avec appareils radio:

Le présent appareil est conforme aux CNR d'Industrie Canada applicables aux appareils radio exempts de licence. L'exploitation est autorisée aux deux conditions suivantes: (1) l'appareil ne doit pas produire de brouillage, et (2) l'utilisateur de l'appareil doit accepter tout brouillage radioélectrique subi, même si le brouillage est susceptible d'en compromettre le fonctionnement.

Concerning EVMs Including Detachable Antennas:

Under Industry Canada regulations, this radio transmitter may only operate using an antenna of a type and maximum (or lesser) gain approved for the transmitter by Industry Canada. To reduce potential radio interference to other users, the antenna type and its gain should be so chosen that the equivalent isotropically radiated power (e.i.r.p.) is not more than that necessary for successful communication. This radio transmitter has been approved by Industry Canada to operate with the antenna types listed in the user guide with the maximum permissible gain and required antenna impedance for each antenna type indicated. Antenna types not included in this list, having a gain greater than the maximum gain indicated for that type, are strictly prohibited for use with this device.

Concernant les EVMs avec antennes détachables

Conformément à la réglementation d'Industrie Canada, le présent émetteur radio peut fonctionner avec une antenne d'un type et d'un gain maximal (ou inférieur) approuvé pour l'émetteur par Industrie Canada. Dans le but de réduire les risques de brouillage radioélectrique à l'intention des autres utilisateurs, il faut choisir le type d'antenne et son gain de sorte que la puissance isotrope rayonnée équivalente (p.i.r.e.) ne dépasse pas l'intensité nécessaire à l'établissement d'une communication satisfaisante. Le présent émetteur radio a été approuvé par Industrie Canada pour fonctionner avec les types d'antenne énumérés dans le manuel d'usage et ayant un gain admissible maximal et l'impédance requise pour chaque type d'antenne. Les types d'antenne non inclus dans cette liste, ou dont le gain est supérieur au gain maximal indiqué, sont strictement interdits pour l'exploitation de l'émetteur.

3.3 Japan

3.3.1 *Notice for EVMs delivered in Japan:* Please see http://www.tij.co.jp/sds/ti_ja/general/eStore/notice_01.page 日本国内に輸入される評価用キット、ボードについては、次のところをご覧ください。

<https://www.ti.com/ja-jp/legal/notice-for-evaluation-kits-delivered-in-japan.html>

3.3.2 *Notice for Users of EVMs Considered "Radio Frequency Products" in Japan:* EVMs entering Japan may not be certified by TI as conforming to Technical Regulations of Radio Law of Japan.

If User uses EVMs in Japan, not certified to Technical Regulations of Radio Law of Japan, User is required to follow the instructions set forth by Radio Law of Japan, which includes, but is not limited to, the instructions below with respect to EVMs (which for the avoidance of doubt are stated strictly for convenience and should be verified by User):

1. Use EVMs in a shielded room or any other test facility as defined in the notification #173 issued by Ministry of Internal Affairs and Communications on March 28, 2006, based on Sub-section 1.1 of Article 6 of the Ministry's Rule for Enforcement of Radio Law of Japan,
2. Use EVMs only after User obtains the license of Test Radio Station as provided in Radio Law of Japan with respect to EVMs, or
3. Use of EVMs only after User obtains the Technical Regulations Conformity Certification as provided in Radio Law of Japan with respect to EVMs. Also, do not transfer EVMs, unless User gives the same notice above to the transferee. Please note that if User does not follow the instructions above, User will be subject to penalties of Radio Law of Japan.

【無線電波を送信する製品の開発キットをお使いになる際の注意事項】 開発キットの中には技術基準適合証明を受けていないものがあります。技術適合証明を受けていないもののご使用に際しては、電波法遵守のため、以下のいずれかの措置を取っていただく必要がありますのでご注意ください。

1. 電波法施行規則第6条第1項第1号に基づく平成18年3月28日総務省告示第173号で定められた電波暗室等の試験設備でご使用いただく。
2. 実験局の免許を取得後ご使用いただく。
3. 技術基準適合証明を取得後ご使用いただく。

なお、本製品は、上記の「ご使用にあたっての注意」を譲渡先、移転先に通知しない限り、譲渡、移転できないものとします。

上記を遵守頂けない場合は、電波法の罰則が適用される可能性があることをご留意ください。 日本テキサス・インスツルメンツ株式会社
東京都新宿区西新宿 6 丁目 2 4 番 1 号
西新宿三井ビル

3.3.3 *Notice for EVMs for Power Line Communication:* Please see http://www.tij.co.jp/sds/ti_ja/general/eStore/notice_02.page

電力線搬送波通信についての開発キットをお使いになる際の注意事項については、次のところをご覧ください。<https://www.ti.com/ja-jp/legal/notice-for-evaluation-kits-for-power-line-communication.html>

3.4 European Union

3.4.1 *For EVMs subject to EU Directive 2014/30/EU (Electromagnetic Compatibility Directive):*

This is a class A product intended for use in environments other than domestic environments that are connected to a low-voltage power-supply network that supplies buildings used for domestic purposes. In a domestic environment this product may cause radio interference in which case the user may be required to take adequate measures.

4 *EVM Use Restrictions and Warnings:*

4.1 EVMS ARE NOT FOR USE IN FUNCTIONAL SAFETY AND/OR SAFETY CRITICAL EVALUATIONS, INCLUDING BUT NOT LIMITED TO EVALUATIONS OF LIFE SUPPORT APPLICATIONS.

4.2 User must read and apply the user guide and other available documentation provided by TI regarding the EVM prior to handling or using the EVM, including without limitation any warning or restriction notices. The notices contain important safety information related to, for example, temperatures and voltages.

4.3 *Safety-Related Warnings and Restrictions:*

4.3.1 User shall operate the EVM within TI's recommended specifications and environmental considerations stated in the user guide, other available documentation provided by TI, and any other applicable requirements and employ reasonable and customary safeguards. Exceeding the specified performance ratings and specifications (including but not limited to input and output voltage, current, power, and environmental ranges) for the EVM may cause personal injury or death, or property damage. If there are questions concerning performance ratings and specifications, User should contact a TI field representative prior to connecting interface electronics including input power and intended loads. Any loads applied outside of the specified output range may also result in unintended and/or inaccurate operation and/or possible permanent damage to the EVM and/or interface electronics. Please consult the EVM user guide prior to connecting any load to the EVM output. If there is uncertainty as to the load specification, please contact a TI field representative. During normal operation, even with the inputs and outputs kept within the specified allowable ranges, some circuit components may have elevated case temperatures. These components include but are not limited to linear regulators, switching transistors, pass transistors, current sense resistors, and heat sinks, which can be identified using the information in the associated documentation. When working with the EVM, please be aware that the EVM may become very warm.

4.3.2 EVMs are intended solely for use by technically qualified, professional electronics experts who are familiar with the dangers and application risks associated with handling electrical mechanical components, systems, and subsystems. User assumes all responsibility and liability for proper and safe handling and use of the EVM by User or its employees, affiliates, contractors or designees. User assumes all responsibility and liability to ensure that any interfaces (electronic and/or mechanical) between the EVM and any human body are designed with suitable isolation and means to safely limit accessible leakage currents to minimize the risk of electrical shock hazard. User assumes all responsibility and liability for any improper or unsafe handling or use of the EVM by User or its employees, affiliates, contractors or designees.

4.4 User assumes all responsibility and liability to determine whether the EVM is subject to any applicable international, federal, state, or local laws and regulations related to User's handling and use of the EVM and, if applicable, User assumes all responsibility and liability for compliance in all respects with such laws and regulations. User assumes all responsibility and liability for proper disposal and recycling of the EVM consistent with all applicable international, federal, state, and local requirements.

5. *Accuracy of Information:* To the extent TI provides information on the availability and function of EVMs, TI attempts to be as accurate as possible. However, TI does not warrant the accuracy of EVM descriptions, EVM availability or other information on its websites as accurate, complete, reliable, current, or error-free.

6. *Disclaimers:*

6.1 EXCEPT AS SET FORTH ABOVE, EVMS AND ANY MATERIALS PROVIDED WITH THE EVM (INCLUDING, BUT NOT LIMITED TO, REFERENCE DESIGNS AND THE DESIGN OF THE EVM ITSELF) ARE PROVIDED "AS IS" AND "WITH ALL FAULTS." TI DISCLAIMS ALL OTHER WARRANTIES, EXPRESS OR IMPLIED, REGARDING SUCH ITEMS, INCLUDING BUT NOT LIMITED TO ANY EPIDEMIC FAILURE WARRANTY OR IMPLIED WARRANTIES OF MERCHANTABILITY OR FITNESS FOR A PARTICULAR PURPOSE OR NON-INFRINGEMENT OF ANY THIRD PARTY PATENTS, COPYRIGHTS, TRADE SECRETS OR OTHER INTELLECTUAL PROPERTY RIGHTS.

6.2 EXCEPT FOR THE LIMITED RIGHT TO USE THE EVM SET FORTH HEREIN, NOTHING IN THESE TERMS SHALL BE CONSTRUED AS GRANTING OR CONFERRING ANY RIGHTS BY LICENSE, PATENT, OR ANY OTHER INDUSTRIAL OR INTELLECTUAL PROPERTY RIGHT OF TI, ITS SUPPLIERS/LICENSORS OR ANY OTHER THIRD PARTY, TO USE THE EVM IN ANY FINISHED END-USER OR READY-TO-USE FINAL PRODUCT, OR FOR ANY INVENTION, DISCOVERY OR IMPROVEMENT, REGARDLESS OF WHEN MADE, CONCEIVED OR ACQUIRED.

7. *USER'S INDEMNITY OBLIGATIONS AND REPRESENTATIONS.* USER WILL DEFEND, INDEMNIFY AND HOLD TI, ITS LICENSORS AND THEIR REPRESENTATIVES HARMLESS FROM AND AGAINST ANY AND ALL CLAIMS, DAMAGES, LOSSES, EXPENSES, COSTS AND LIABILITIES (COLLECTIVELY, "CLAIMS") ARISING OUT OF OR IN CONNECTION WITH ANY HANDLING OR USE OF THE EVM THAT IS NOT IN ACCORDANCE WITH THESE TERMS. THIS OBLIGATION SHALL APPLY WHETHER CLAIMS ARISE UNDER STATUTE, REGULATION, OR THE LAW OF TORT, CONTRACT OR ANY OTHER LEGAL THEORY, AND EVEN IF THE EVM FAILS TO PERFORM AS DESCRIBED OR EXPECTED.

8. *Limitations on Damages and Liability:*

8.1 *General Limitations.* IN NO EVENT SHALL TI BE LIABLE FOR ANY SPECIAL, COLLATERAL, INDIRECT, PUNITIVE, INCIDENTAL, CONSEQUENTIAL, OR EXEMPLARY DAMAGES IN CONNECTION WITH OR ARISING OUT OF THESE TERMS OR THE USE OF THE EVMS, REGARDLESS OF WHETHER TI HAS BEEN ADVISED OF THE POSSIBILITY OF SUCH DAMAGES. EXCLUDED DAMAGES INCLUDE, BUT ARE NOT LIMITED TO, COST OF REMOVAL OR REINSTALLATION, ANCILLARY COSTS TO THE PROCUREMENT OF SUBSTITUTE GOODS OR SERVICES, RETESTING, OUTSIDE COMPUTER TIME, LABOR COSTS, LOSS OF GOODWILL, LOSS OF PROFITS, LOSS OF SAVINGS, LOSS OF USE, LOSS OF DATA, OR BUSINESS INTERRUPTION. NO CLAIM, SUIT OR ACTION SHALL BE BROUGHT AGAINST TI MORE THAN TWELVE (12) MONTHS AFTER THE EVENT THAT GAVE RISE TO THE CAUSE OF ACTION HAS OCCURRED.

8.2 *Specific Limitations.* IN NO EVENT SHALL TI'S AGGREGATE LIABILITY FROM ANY USE OF AN EVM PROVIDED HEREUNDER, INCLUDING FROM ANY WARRANTY, INDEMNITY OR OTHER OBLIGATION ARISING OUT OF OR IN CONNECTION WITH THESE TERMS, EXCEED THE TOTAL AMOUNT PAID TO TI BY USER FOR THE PARTICULAR EVM(S) AT ISSUE DURING THE PRIOR TWELVE (12) MONTHS WITH RESPECT TO WHICH LOSSES OR DAMAGES ARE CLAIMED. THE EXISTENCE OF MORE THAN ONE CLAIM SHALL NOT ENLARGE OR EXTEND THIS LIMIT.

9. *Return Policy.* Except as otherwise provided, TI does not offer any refunds, returns, or exchanges. Furthermore, no return of EVM(s) will be accepted if the package has been opened and no return of the EVM(s) will be accepted if they are damaged or otherwise not in a resalable condition. If User feels it has been incorrectly charged for the EVM(s) it ordered or that delivery violates the applicable order, User should contact TI. All refunds will be made in full within thirty (30) working days from the return of the components(s), excluding any postage or packaging costs.
10. *Governing Law:* These terms and conditions shall be governed by and interpreted in accordance with the laws of the State of Texas, without reference to conflict-of-laws principles. User agrees that non-exclusive jurisdiction for any dispute arising out of or relating to these terms and conditions lies within courts located in the State of Texas and consents to venue in Dallas County, Texas. Notwithstanding the foregoing, any judgment may be enforced in any United States or foreign court, and TI may seek injunctive relief in any United States or foreign court.

Mailing Address: Texas Instruments, Post Office Box 655303, Dallas, Texas 75265
Copyright © 2023, Texas Instruments Incorporated

IMPORTANT NOTICE AND DISCLAIMER

TI PROVIDES TECHNICAL AND RELIABILITY DATA (INCLUDING DATASHEETS), DESIGN RESOURCES (INCLUDING REFERENCE DESIGNS), APPLICATION OR OTHER DESIGN ADVICE, WEB TOOLS, SAFETY INFORMATION, AND OTHER RESOURCES "AS IS" AND WITH ALL FAULTS, AND DISCLAIMS ALL WARRANTIES, EXPRESS AND IMPLIED, INCLUDING WITHOUT LIMITATION ANY IMPLIED WARRANTIES OF MERCHANTABILITY, FITNESS FOR A PARTICULAR PURPOSE OR NON-INFRINGEMENT OF THIRD PARTY INTELLECTUAL PROPERTY RIGHTS.

These resources are intended for skilled developers designing with TI products. You are solely responsible for (1) selecting the appropriate TI products for your application, (2) designing, validating and testing your application, and (3) ensuring your application meets applicable standards, and any other safety, security, regulatory or other requirements.

These resources are subject to change without notice. TI grants you permission to use these resources only for development of an application that uses the TI products described in the resource. Other reproduction and display of these resources is prohibited. No license is granted to any other TI intellectual property right or to any third party intellectual property right. TI disclaims responsibility for, and you fully indemnify TI and its representatives against any claims, damages, costs, losses, and liabilities arising out of your use of these resources.

TI's products are provided subject to [TI's Terms of Sale](#), [TI's General Quality Guidelines](#), or other applicable terms available either on [ti.com](#) or provided in conjunction with such TI products. TI's provision of these resources does not expand or otherwise alter TI's applicable warranties or warranty disclaimers for TI products. Unless TI explicitly designates a product as custom or customer-specified, TI products are standard, catalog, general purpose devices.

TI objects to and rejects any additional or different terms you may propose.

Copyright © 2026, Texas Instruments Incorporated

Last updated 10/2025