



INDEX

Sheet 1: Title
Sheet 2: Flex Connector Interface
Sheet 3: Power
Sheet 4: DMD
Sheet 5: Important Notice
Sheet 6: Revisions

COMPUTER GENERATED DRAWING - DO NOT REVISE MANUALLY			
REVISIONS			
REV	DESCRIPTION	DATE	APPROVED
A	Production Release	02/24/2021	
B	Addition of DLP472NE/TE DMDs	03/01/2024	
C	Updated L502 from 22uH to 4.7uH	05/29/2025	

Revisions

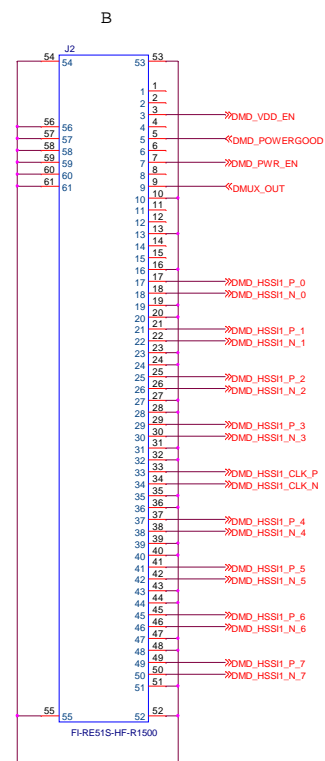
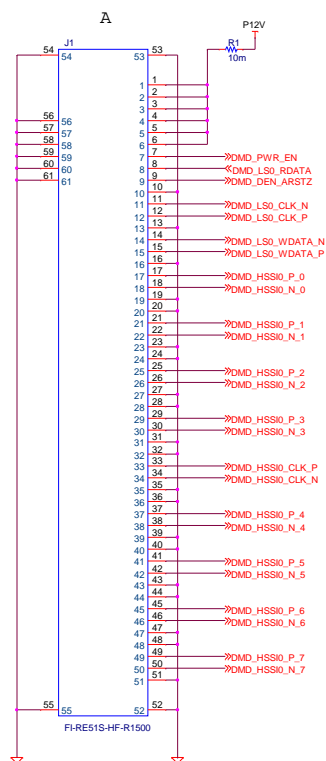
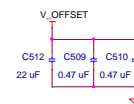
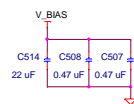
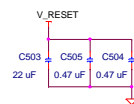
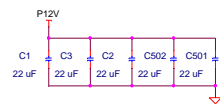
Rev A
Production Release

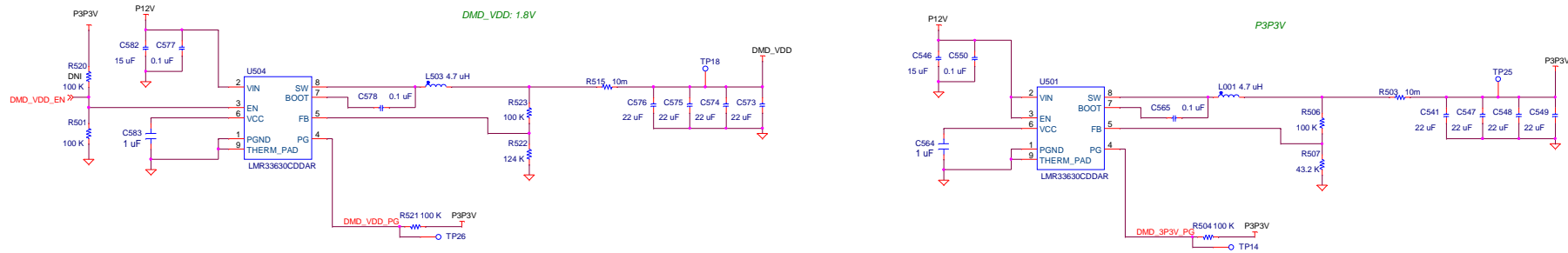
Rev B
Addition of DLP472NE/TE DMDs

Rev C
Updated L502 from 22uH to 4.7uH

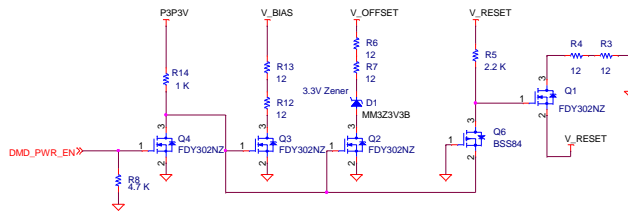
		DWN	M. Vega	DATE	02/24/2021	TEXAS INSTRUMENTS (C) COPYRIGHT 2024 TEXAS INSTRUMENTS ALL RIGHTS RESERVED	
		ENGR	L. Wang		07/09/2025		
		SYST	R. Matcovschi		07/09/2025		
		PRJ					
		QA	---		---	TITLE DLP471TE, DLP472NE/TE and DLP650TE EVMs	
NEXT ASSY	USED ON					A3	DRAWING NO DLP057
APPLICATION		SW	Cadence Capture V.17.2			SCALE	SHEET 1 of 6
							REV C

TI Confidential - Selective Disclosure

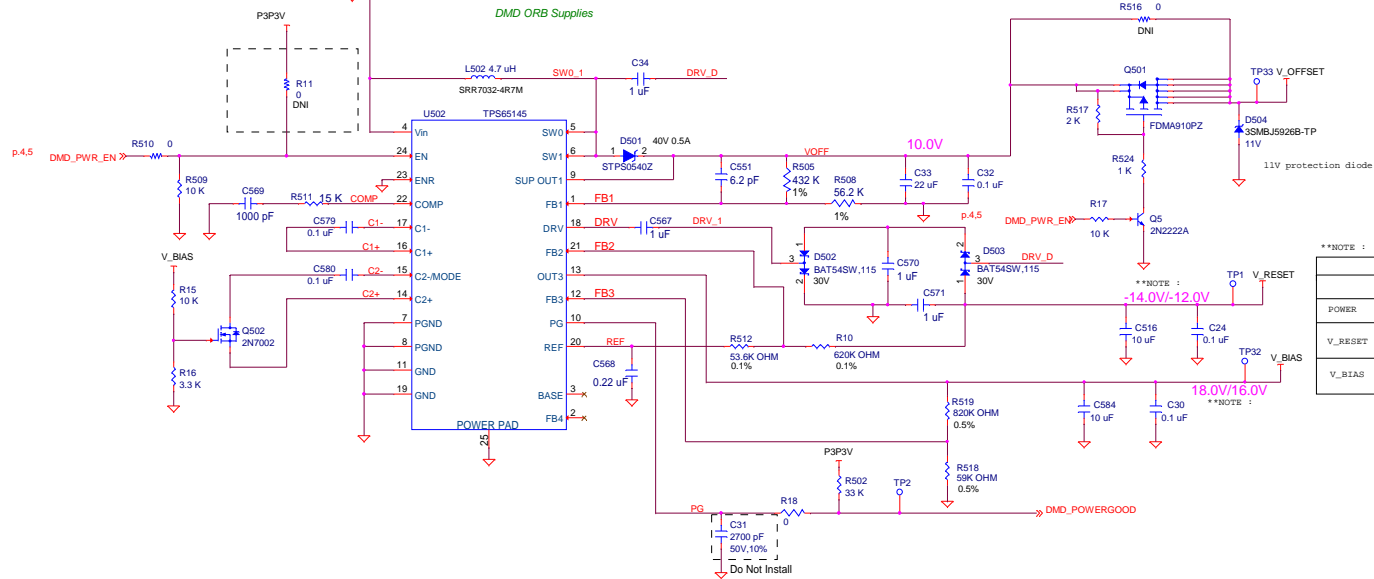




DMD ORB Supply Power Off Drains

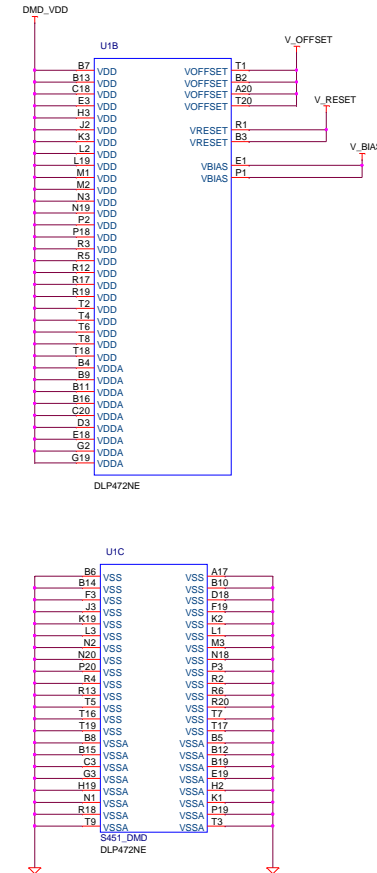


DMD ORB Supplies



**NOTE :

	VARIANT VOLTAGE DIFFERENCES			
	DLP057-001	DLP057-002	DLP057-003	DLP057-004
POWER	DLP471ITERVM	DLP650TEVM	DLP472NEEVM	DLP472TEVM
V_RESET	-14.0V	-12.0V	-14.0V	-14.0V
V_BIAS	18.0V	16.0V	18.0V	18.0V



*** NOTE :	
VARIANT PIN NAME DIFFERENCES FOR U1	
DLP057-001, -003, -004	DLP057-002
DLP471TEEVM, DLP472[NE/TE]EVM	DLP650TEEVM
Pin A3 - D_AP<4> Pin A4 - D_AN<2> Pin F2 - D_AP<2> Pin E2 - D_AN<2>	Pin A3 - D_AP<2> Pin A4 - D_AN<2> Pin F2 - D_AP<4> Pin E2 - D_AN<4>

IMPORTANT NOTICE AND DISCLAIMER

TI PROVIDES TECHNICAL AND RELIABILITY DATA (INCLUDING DATASHEETS), DESIGN RESOURCES (INCLUDING REFERENCE DESIGNS), APPLICATION OR OTHER DESIGN ADVICE, WEB TOOLS, SAFETY INFORMATION, AND OTHER RESOURCES "AS IS" AND WITH ALL FAULTS, AND DISCLAIMS ALL WARRANTIES, EXPRESS AND IMPLIED, INCLUDING WITHOUT LIMITATION ANY IMPLIED WARRANTIES OF MERCHANTABILITY, FITNESS FOR A PARTICULAR PURPOSE OR NON-INFRINGEMENT OF THIRD PARTY INTELLECTUAL PROPERTY RIGHTS.

These resources are intended for skilled developers designing with TI products. You are solely responsible for (1) selecting the appropriate TI products for your application, (2) designing, validating and testing your application, and (3) ensuring your application meets applicable standards, and any other safety, security, or other requirements. These resources are subject to change without notice. TI grants you permission to use these resources only for development of an application that uses the TI products described in the resource. Other reproduction and display of these resources is prohibited. No license is granted to any other TI intellectual property right or to any third party intellectual property right. TI disclaims responsibility for, and you will fully indemnify TI and its representatives against, any claims, damages, costs, losses, and liabilities arising out of your use of these resources.

TI's products are provided subject to TI's Terms of Sale (www.ti.com/legal/termsofsale.html) or other applicable terms available either on ti.com or provided in conjunction with such TI products. TI's provision of these resources does not expand or otherwise alter TI's applicable warranties or warranty disclaimers for TI products.

Mailing Address: Texas Instruments, Post Office Box 655303, Dallas, Texas 75265
Copyright © 2024, Texas Instruments Incorporated

TEXAS INSTRUMENTS	DWN M. Vega	DATE 02/24/21	A3	DRAWING NO DLP057	REV C
	ISSUE DATE 07/09/25				
			SCALE	SHEET 5 OF 6	

A --- Production Release

PCB LOGO:
Texas Instruments



PCB LOGO:
WEEE and CE



PCB LOGO:
FCC disclaimer

*For evaluation only; not
FCC approved for resale*

LBL1
PCB LABEL
THT-1-423-10
LABEL 0.25"HX0.75"W WH

Z_BOARD1
Printed Circuit Board, DLP057

Z_MECH2
CABLE ASSY HI SPEED 51POS 20CM
JF08R0R051020UA

Z_MECH3
CABLE ASSY HI SPEED 51POS 20CM
JF08R0R051020UA

VARIANT LABEL - LBL1	
DLP057-001	DLP471TEEVM
DLP057-002	DLP650TEEVM
DLP057-003	DLP472NEEVM
DLP057-004	DLP472TEEVM

TI Confidential - Selective Disclosure

TEXAS INSTRUMENTS	DWN M. Vega	DATE 02/24/21	A3	DRAWING NO DLP057	REV C
	ISSUE DATE 07/09/25				
			SCALE	SHEET 6 OF 6	