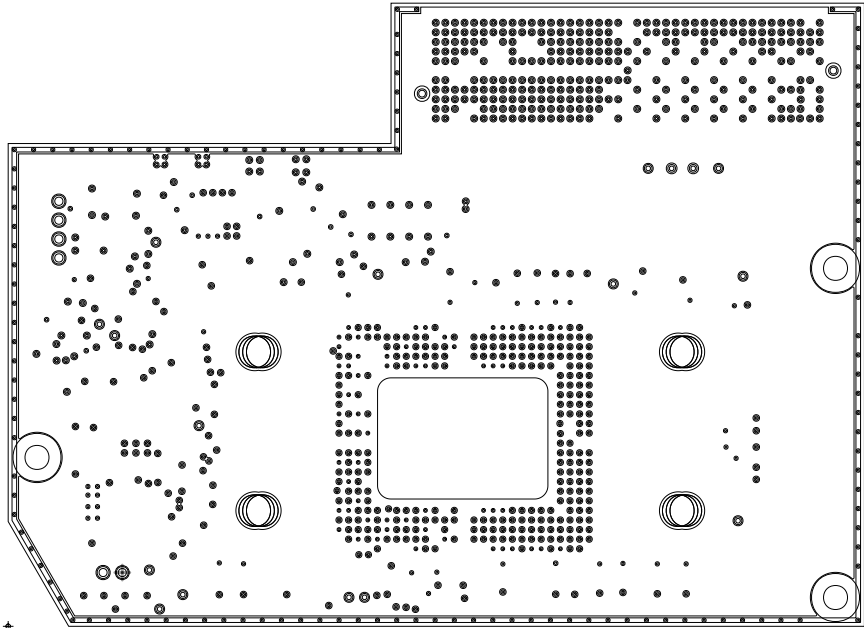
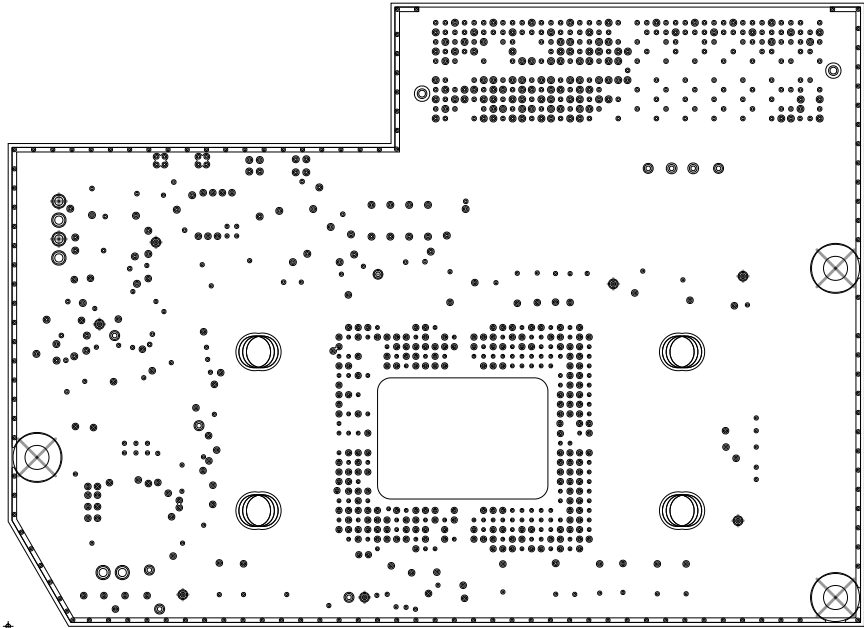




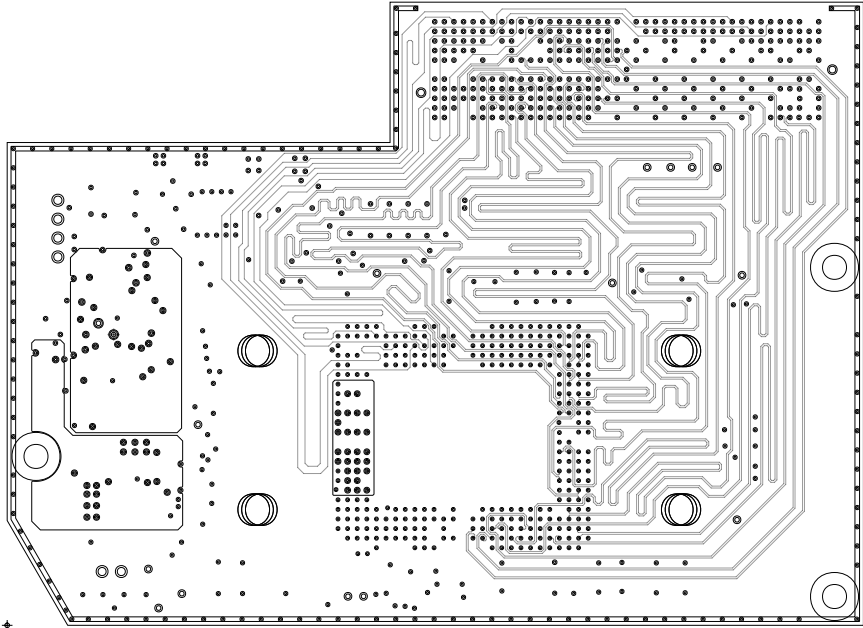
ART FILM - 01_TOP



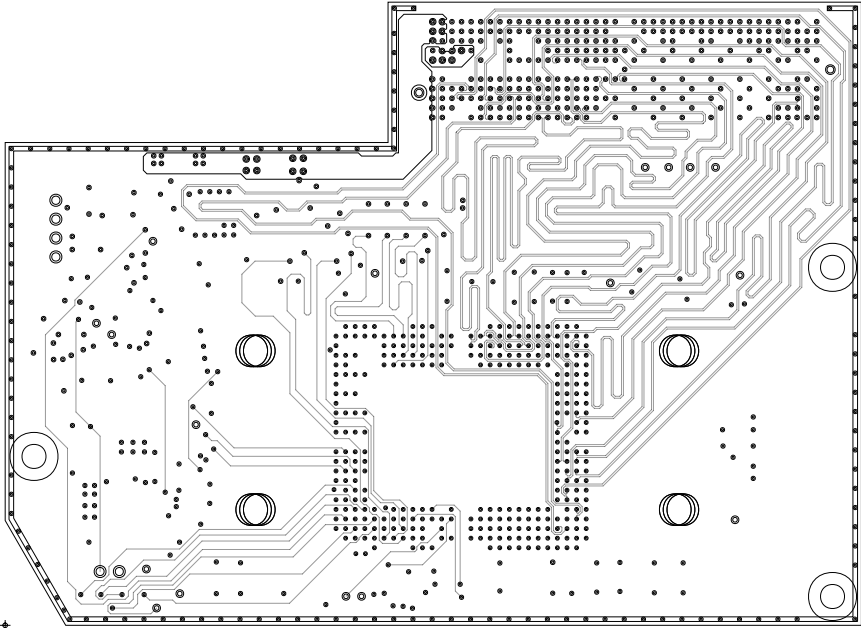
CUSTOMER NAME				TEXAS INSTRUMENTS			
BOARD NAME			DESCRIPTION				
DLP650NE_DLP670RE_Board_Rev1			02_PWR				
BOARD NO.		REV	DATE		SH		
305-PD-23-0423		1	MAY 2023		2 OF 15		



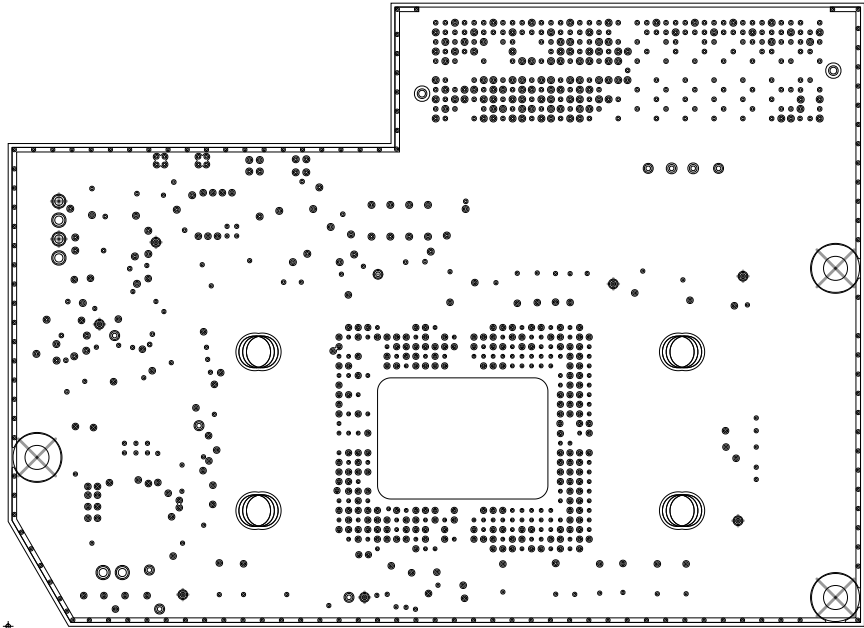
CUSTOMER NAME				TEXAS INSTRUMENTS			
BOARD NAME					DESCRIPTION		
DLP650NE_DLP670RE_Board_Rev1					03_GND1		
BOARD NO.		REV	DATE	SH		3 OF 15	
305-PD-23-0423		1	MAY 2023				



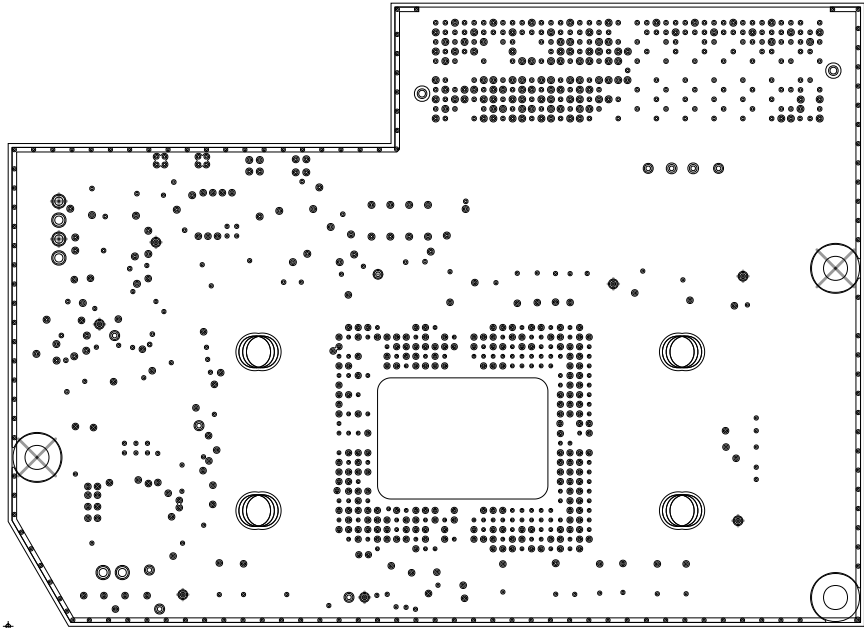
CUSTOMER NAME				TEXAS INSTRUMENTS			
BOARD NAME			DESCRIPTION				
DLP650NE_DLP670RE_Board_Rev1			04_SIG1				
BOARD NO.		REV	DATE		SH 4 OF 15		
305-PD-23-0423		1	MAY 2023				



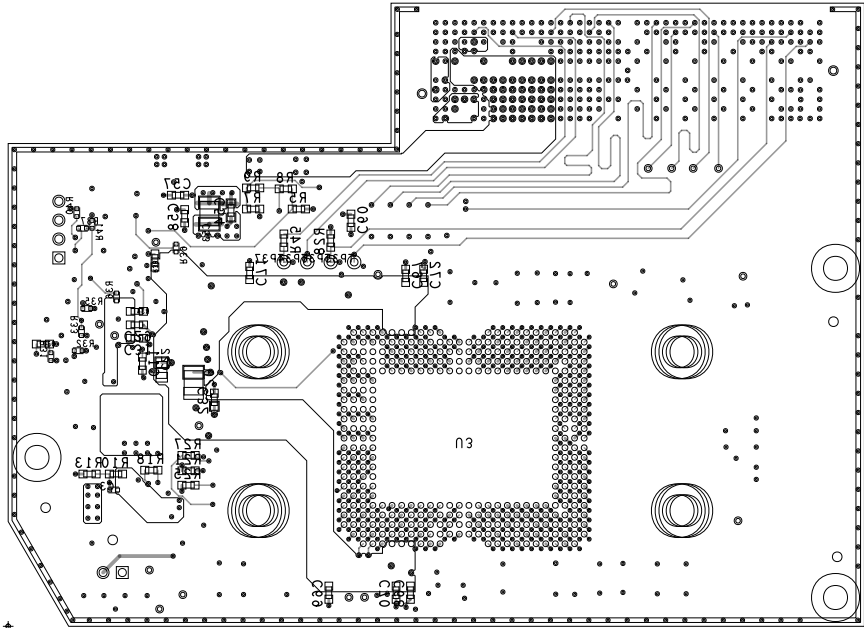
CUSTOMER NAME				TEXAS INSTRUMENTS			
BOARD NAME			DESCRIPTION				
DLP650NE_DLP670RE_Board_Rev1			06_SIG2				
BOARD NO.		REV	DATE		SH 6 OF 15		
305-PD-23-0423		1	MAY 2023				



CUSTOMER NAME				TEXAS INSTRUMENTS			
BOARD NAME					DESCRIPTION		
DLP650NE_DLP670RE_Board_Rev1					07_GND3		
BOARD NO.		REV	DATE	SH		7 OF 15	
305-PD-23-0423		1	MAY 2023				



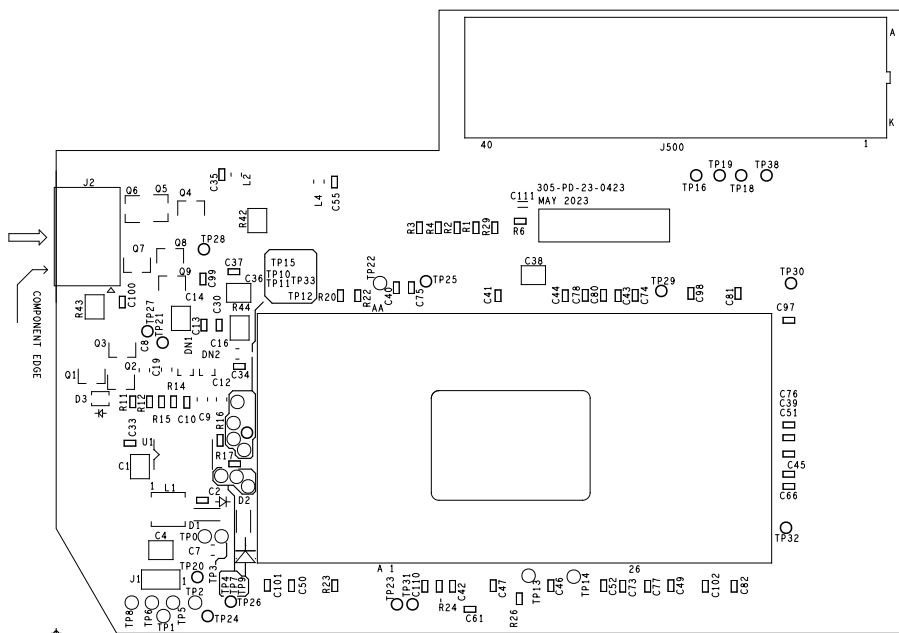
CUSTOMER NAME					TEXAS INSTRUMENTS									
BOARD NAME				DESCRIPTION										
DLP650NE_DLP670RE_Board_Rev1				05_GND2										
BOARD NO.			REV	DATE		SH			5		OF		15	
305-PD-23-0423			1	MAY 2023										

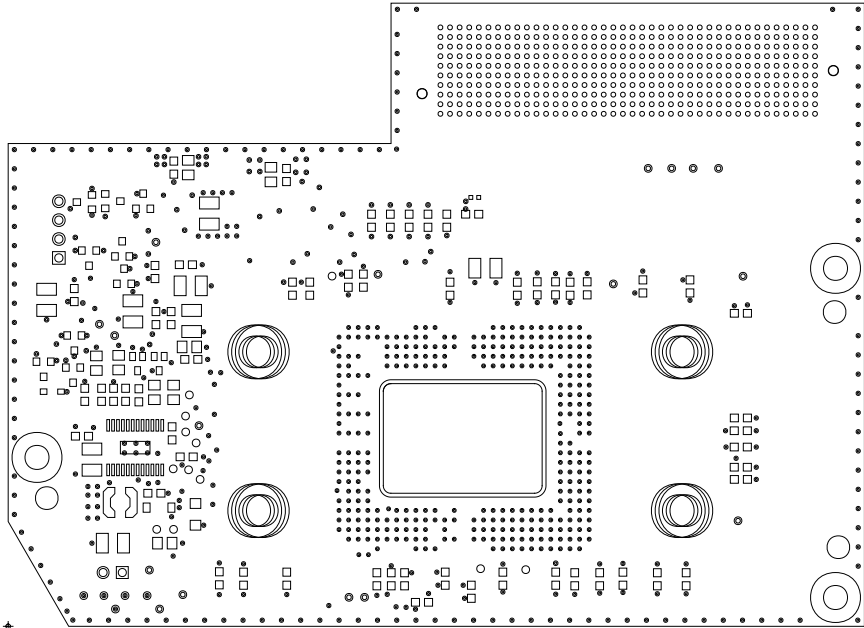


CUSTOMER NAME						TEXAS INSTRUMENTS					
BOARD NAME				DESCRIPTION				ASSEMBLY			
DLP650NE_DLP670RE_Board_Rev1				08_BOTTOM							
BOARD NO.			REV	DATE		SH			8	OF	15
305-PD-23-0423			1	MAY 2023					2	OF	2

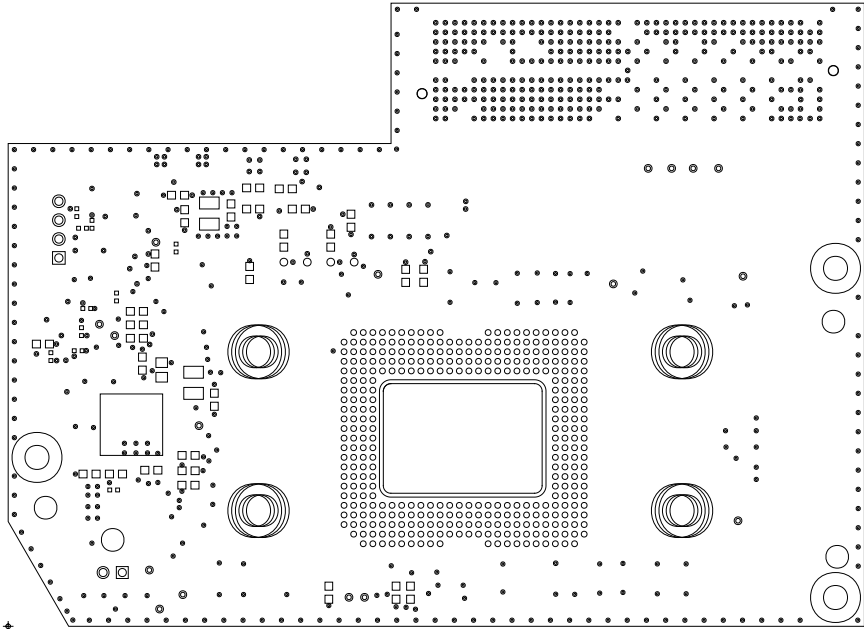


ART FILM - SILK_BOTTOM





CUSTOMER NAME				TEXAS INSTRUMENTS			
BOARD NAME					DESCRIPTION		
DLP650NE_DLP670RE_Board_Rev1					MASK_TOP		
BOARD NO.		REV	DATE	SH			9 OF 15
305-PD-23-0423		1	MAY 2023				



CUSTOMER NAME				TEXAS INSTRUMENTS			
BOARD NAME			DESCRIPTION				
DLP650NE_DLP670RE_Board_Rev1			MASK_BOTTOM				
BOARD NO.		REV	DATE		SH 10 OF 15		
305-PD-23-0423		1	MAY 2023				

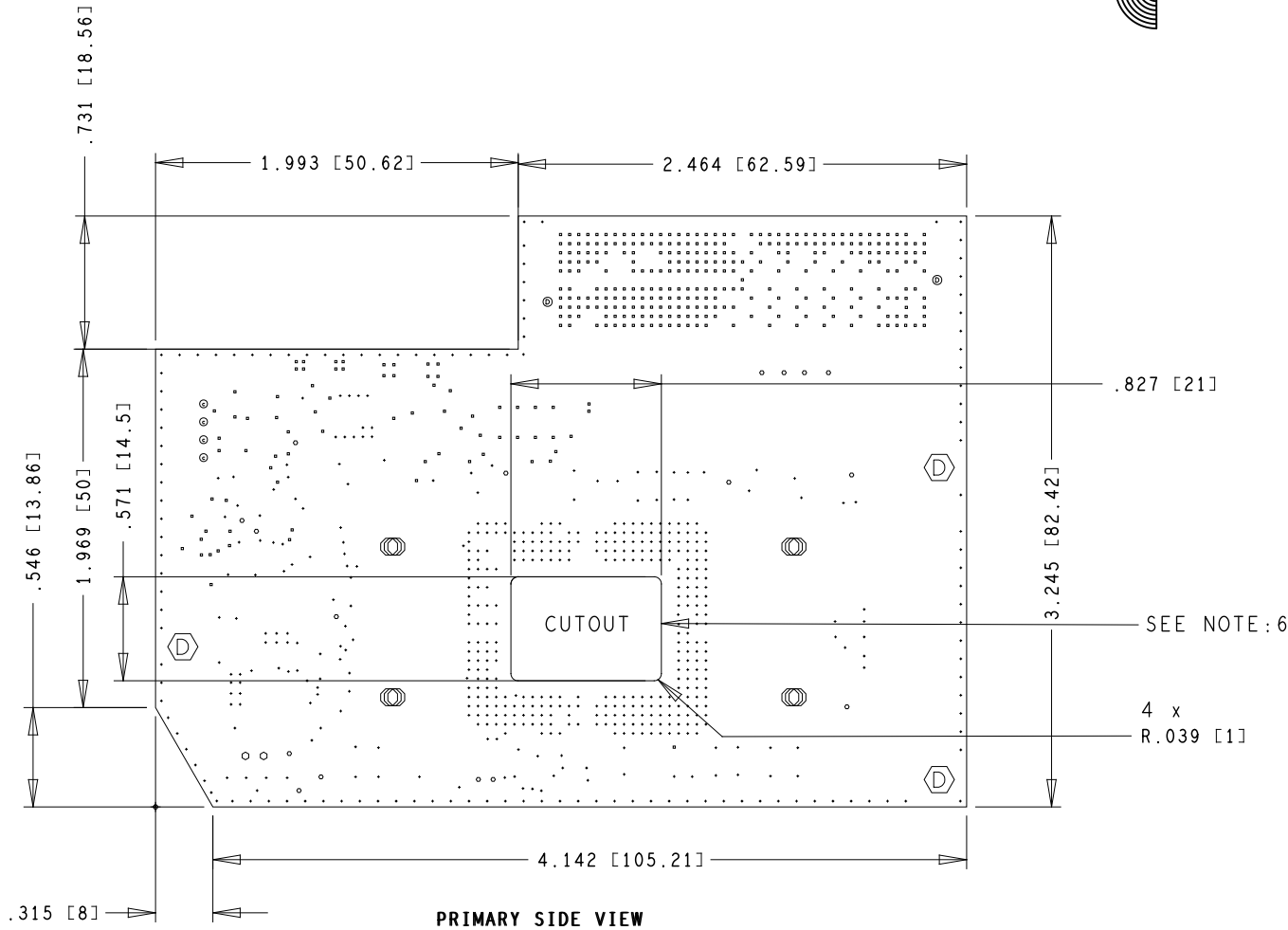
PROCESS NOTES:

1. GENERAL PLATING-ENIG
2. CLIP SILKSCREEN ON NO MASK AREA
3. APPLY LPI SOLDERMASK.SOLDERMASK SHALL CONFORM TO IPC-SM-840, CLASS H. CURRENT REV. COLOR: GLOSSY RED.
4. APPLY LPI SILKSCREEN OR EQUIVALENT PER THE ARTWORK. COLOR: WHITE.
5. BOARD MUST BE ELECTRICALLY TESTED USING SUPPLIED IPC-D-356 NETLIST.
6. NEED TO CUT THE BOARD AS PER MARKED DIMENSION
7. ALL 10 ,12 MIL VIAS NEED TO BE SOLDERMASK PLUGGING ON BOTTOM SIDE
8. REMOVE UNUSED PADS IN ALL INNER LAYERS
9. DEBURR ALL SHARP EDGES

FAB NOTES:

1. ALL DIMENSIONS ARE IN INCHES[MILLIMETERS] UNLESS OTHERWISE SPECIFIED
2. THE PWB SHALL BE FABRICATED TO IPC-6011 AND IPC-6012, CLASS 2, TYPE 3. WORKMANSHIP SHALL CONFORM TO IPC-A-600, CLASS 2. CURRENT REVISIONS.
3. BOARD MATERIAL -REFER STACKUP BOARD MATERIAL SHALL MEET OR EXCEED IPC-4101B. COLOR: NATURAL.
4. ALL BOARDS MUST MEET OR EXCEED UL94V - 0 REQUIREMENTS. PCB MUST BEAR THE UL94V - 0 UL REGISTERED MATERIAL ID NUMBER.
5. IONIC CONTAMINATION LEVEL 10 uG/IN SQ MAXIMUM.
6. VERIFICATION OF GOLD AND NICKEL PLATING THICKNESS REQUIRED FOR EACH FABRICATION LOT.
7. MINIMUM COPPER WALL THICKNESS OF PLATED-THRU HOLES TO BE .001 INCH, WITH A MINIMUM ANNULAR RING OF .002 INCH.
8. OVERALL BOARD THICKNESS TO BE .063 INCHES +/- 10% AND APPLIES AFTER ALL LAMINATION AND PLATING PROCESSES, MEASURED FROM COPPER TO COPPER.
9. MAX. WARP & TWIST TO BE .005 INCHES PER INCH.
10. MAXIMUM RATED VOLTAGE BETWEEN CONDUCTORS SHALL BE 65 VOLTS PEAK.
11. NO BREAKOUT ALLOWED ON PLATED THROUGH HOLES.
12. ALL HOLES IN DRILL CHART ARE FINISHED HOLE SIZES (FHS)
13. NO VENDOR LOGO, ART WORKS SHOULD NOT BE CHANGED WITHOUT PRIOR APPROVAL FROM TEXAS INSTRUMENTS
14. TEARDROPS SHOULD NOT BE ADDED ON ANY AREA WITHOUT PRIOR APPROVAL FROM TEXAS INSTRUMENTS
15. SEE DETAIL A FOR IMPEDANCE REQUIREMENTS AND COPPER WEIGHTS
16. THIS IS A ROHS COMPLIANT BOARD

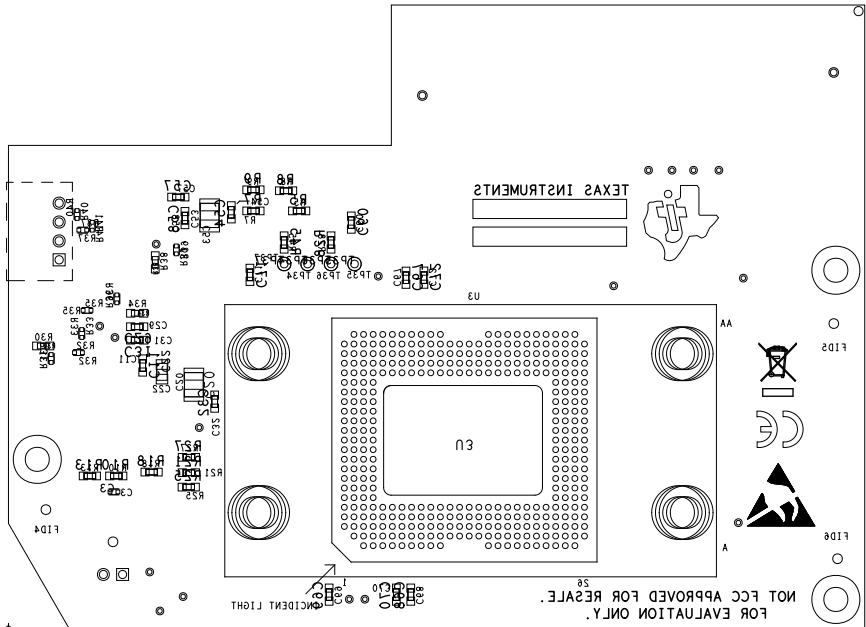
DRILL CHART: TOP & BOTTOM				
ALL UNITS ARE IN MILS				
FIGURE	SIZE	TOLERANCE	PLATED	QTY
•	10.0	+3.0/-3.0	PLATED	582
"	12.0	+3.0/-3.0	PLATED	383
o	24.0	+3.0/-3.0	PLATED	17
○	42.0	+3.0/-3.0	PLATED	2
⊙	42.8	+3.0/-3.0	PLATED	4
⊕	125.0	+3.0/-3.0	PLATED	3
○	165.0	+3.0/-3.0	PLATED	12
⊗	50.0	+2.0/-0.0	NON-PLATED	2



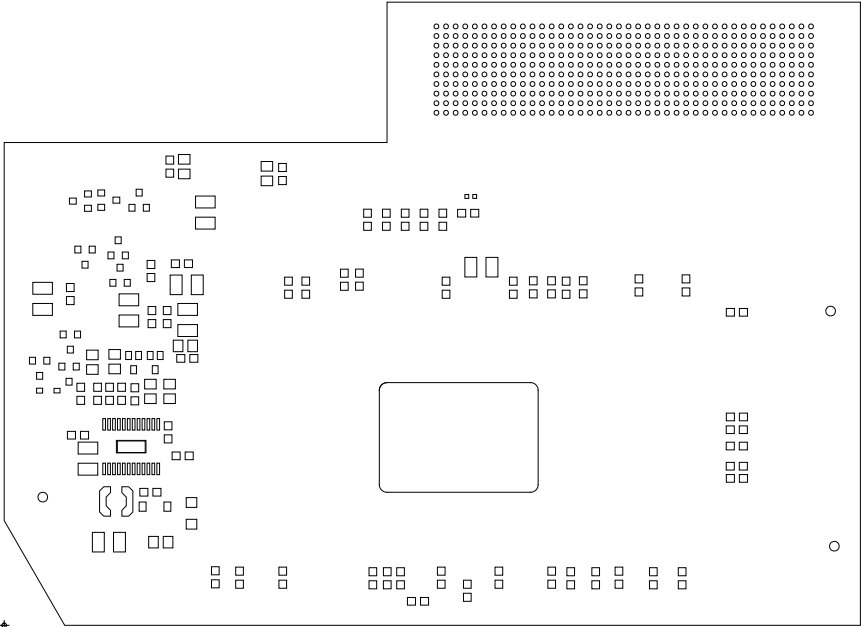
DETAIL: A

50ohm SINGLE ENDED IMPEDANCE CONTROL +/- 10%		100ohm DIFFERENTIAL IMPEDANCE CONTROL +/- 10%	
STACKUP: 8 LAYERS			
TU768	TOP (1 oz + PLATING)	7.37 MIL	-----
TU768	DIELECTRIC (4.24 mils)		
TU768	02_PWR (2 oz)		
TU768	DIELECTRIC (7.09 mils)		
TU768	03_GND1 (2 oz)		
TU768	DIELECTRIC (6.42 mils)		
TU768	04_SIG1 (1 oz)	5.3 MIL	3.71/6.29 MIL
TU768	DIELECTRIC (7.09 mils)		
TU768	05_GND2 (2 oz)		
TU768	DIELECTRIC (6.42 mils)		
TU768	06_SIG2 (1 oz)	5.3 MIL	3.71/6.29 MIL
TU768	DIELECTRIC (7.09 mils)		
TU768	07_GND3 (2 oz)		
TU768	DIELECTRIC (4.65 mils)		
TU768	BOTTOM (1 oz + PLATING)	8.37 MIL	-----
TOTAL THICKNESS: 63 mils +/-10%			

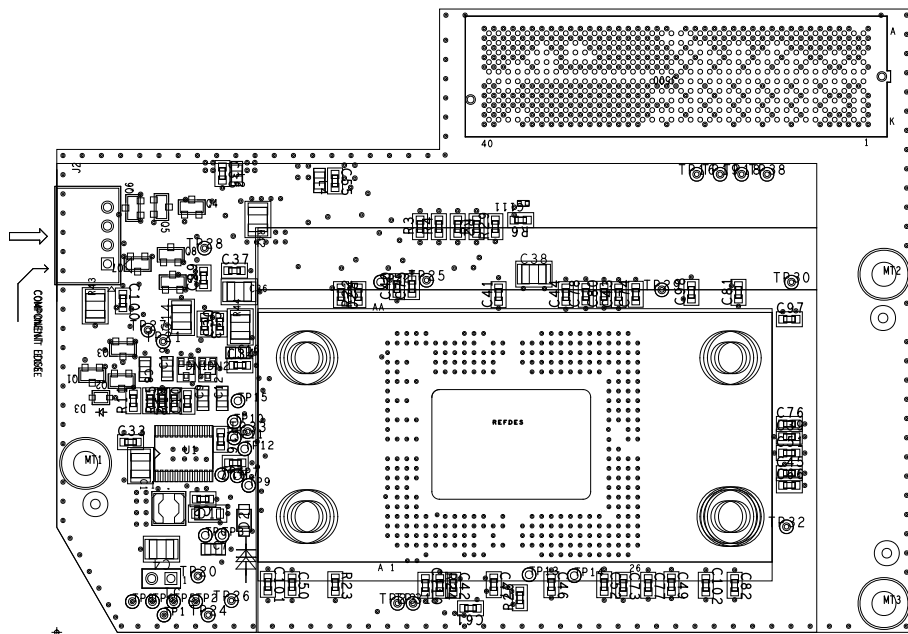
CUSTOMER NAME			
TEXAS INSTRUMENTS			
BOARD NAME		DESCRIPTION	
DLP650NE_DLP670RE_Board_Rev1		FABRICATION DRAWING	
BOARD NO.	REV	DATE	SH 15 OF 15
305-PD-23-0423	1	MAY 2023	



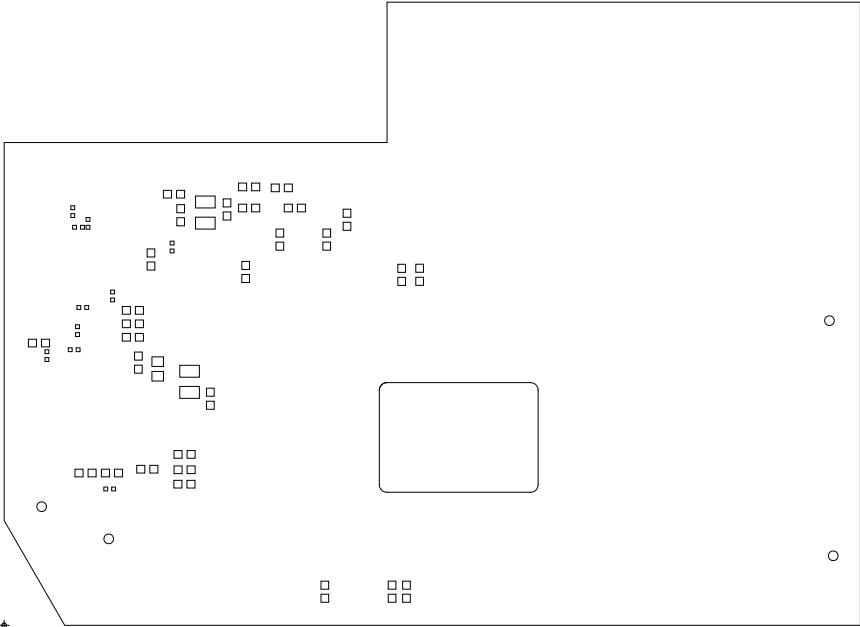
CUSTOMER NAME										
TEXAS INSTRUMENTS										
BOARD NAME					DESCRIPTION					
DLP650NE_DLP670RE_Board_Rev1					ASSEMBLY SILK_BOTTOM					
BOARD NO.			REV	DATE			SH	12	OF	15
305-PD-23-0423			1	MAY 2023			2	OF	2	



CUSTOMER NAME				TEXAS INSTRUMENTS			
BOARD NAME					DESCRIPTION		
DLP650NE_DLP670RE_Board_Rev1					PASTEMASK - PRIMARY SIDE		
BOARD NO.		REV	DATE	SH			13 OF 15
305-PD-23-0423		1	MAY 2023				



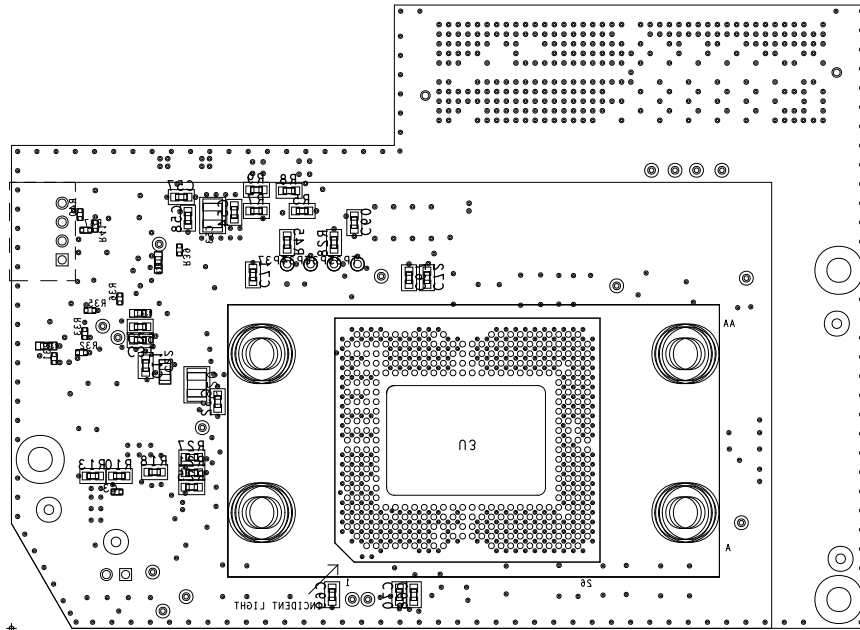
ASSEMBLY



+



CUSTOMER NAME				TEXAS INSTRUMENTS			
BOARD NAME			DESCRIPTION				
DLP650NE_DLP670RE_Board_Rev1			PASTEMASK - SECONDARY SIDE				
BOARD NO.		REV	DATE			SH 14 OF 15	
305-PD-23-0423		1	MAY 2023				



ASSEMBLY

2 OF 2