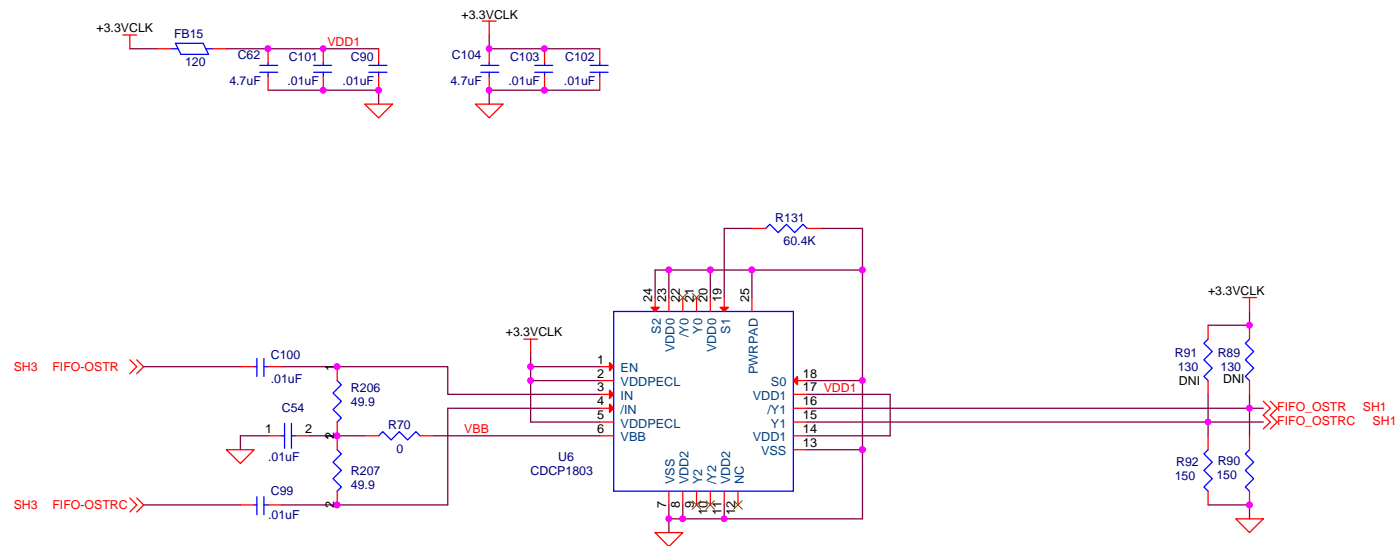
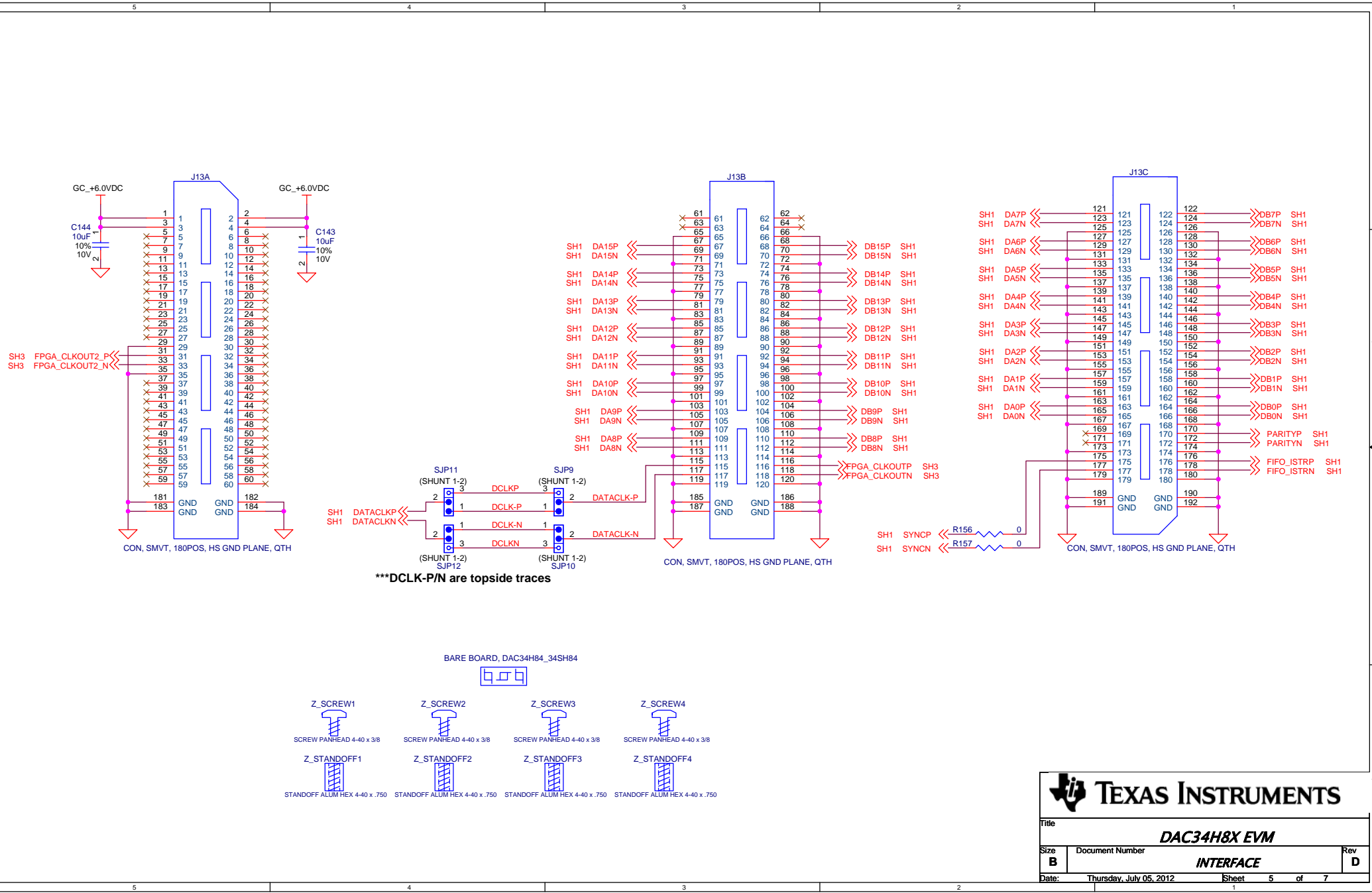
**TEXAS INSTRUMENTS**


Title			
DAC34H8X EVM			
Size	Document Number		Rev
B		CDC	D
Date:	Thursday, July 05, 2012	Sheet	3 of 7

Date: Thursday, July 05, 2012 Sheet 3 of 7

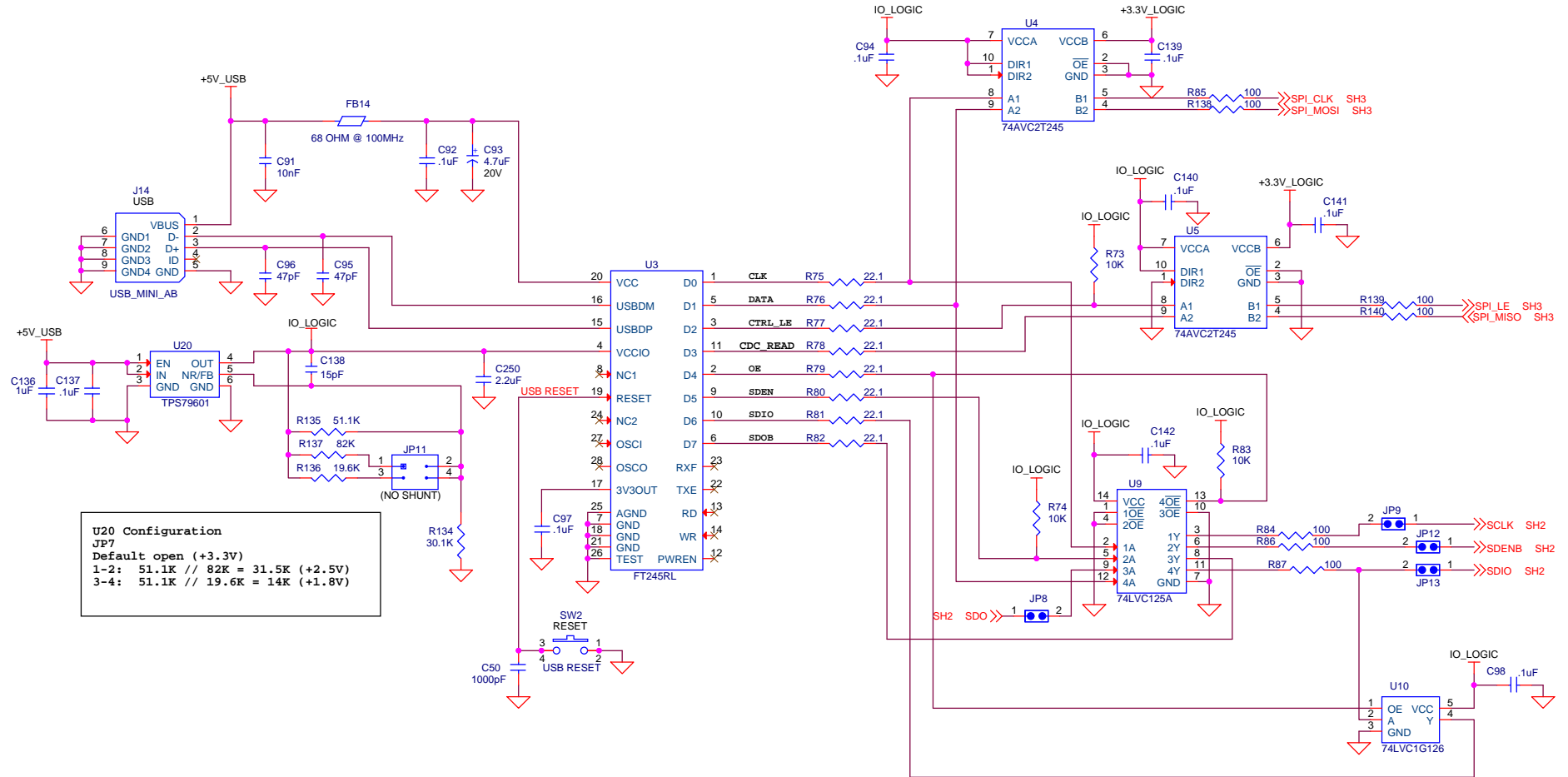




***DCLK-P/N are topside traces

**TEXAS INSTRUMENTS**

Title		
DAC34H8X EVM		
Size	Document Number	Rev
B		D
Date:	Thursday, July 05, 2012	Sheet 5 of 7



U20 Configuration
JP7
 Default open (+3.3V)
 1-2: 51.1K // 82K = 31.5K (+2.5V)
 3-4: 51.1K // 19.6K = 14K (+1.8V)

74AVC2T245

OE	DIR	OPERATION
L	L	B -> A
L	H	A -> B
H	X	ISOLATION

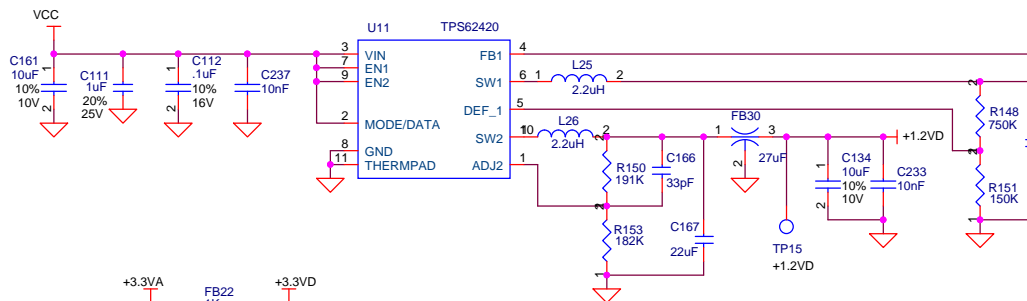
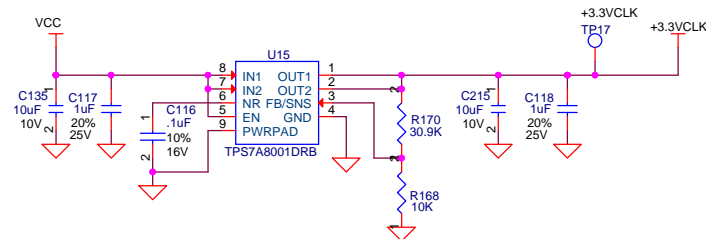
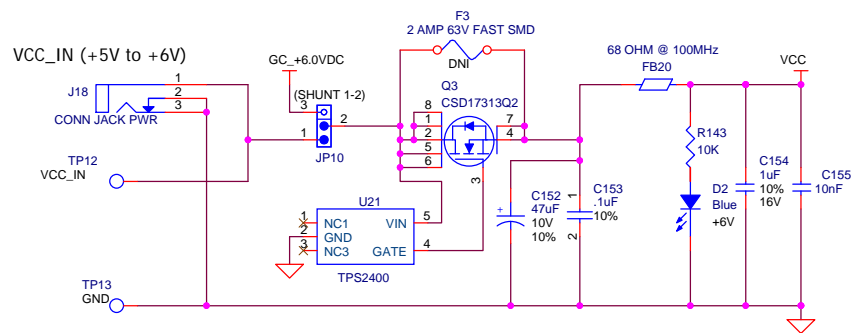
74LVC125A

OE	A	Y
L	H	H
L	L	L
H	X	Z

74LVC1G126

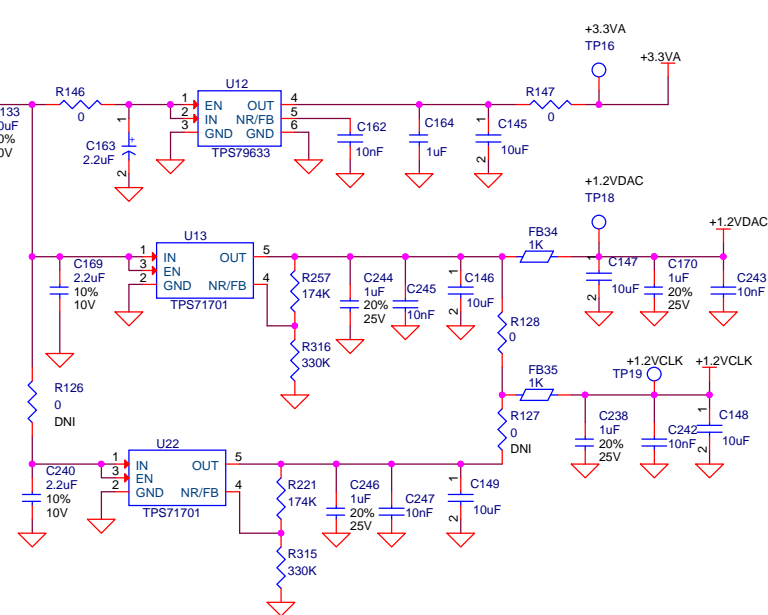
OE	A	Y
H	H	H
H	L	L
L	X	Z





To use Step Down Converter only (DNI LDO U12):
Install R145
DNI R146, R147
Change R148 to 820K
Change R151 to 180K

For DAC34SH84EVM:
Change R150 to 215K
Change R221 and R257 to 232K
DNI R128
Install R126, R127



Title		
DAC34H8X EVM		
Size	Document Number	Rev
B	DAC	D
Date:		
Thursday, July 05, 2012		
Sheet		
7 of 7		