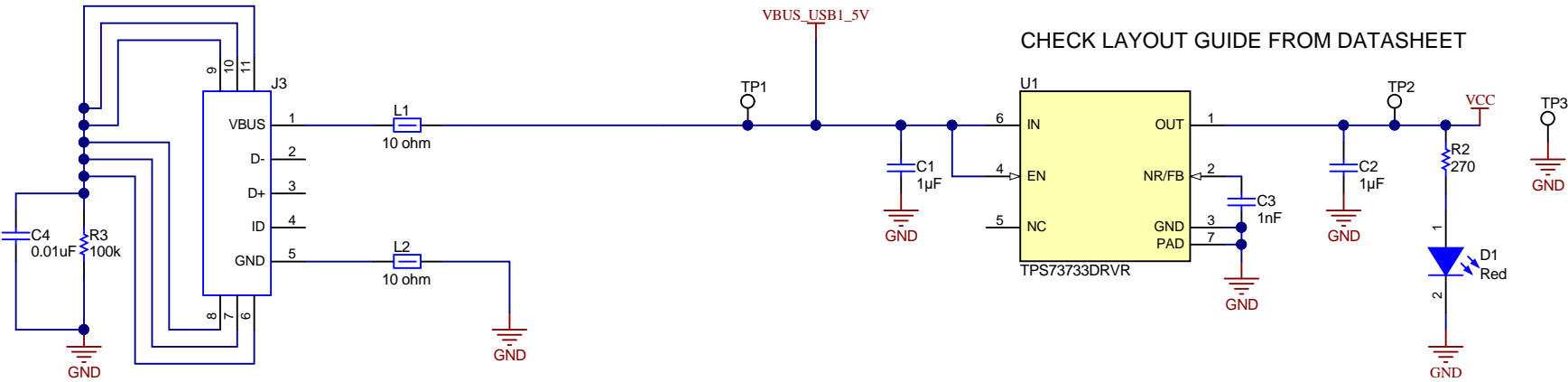
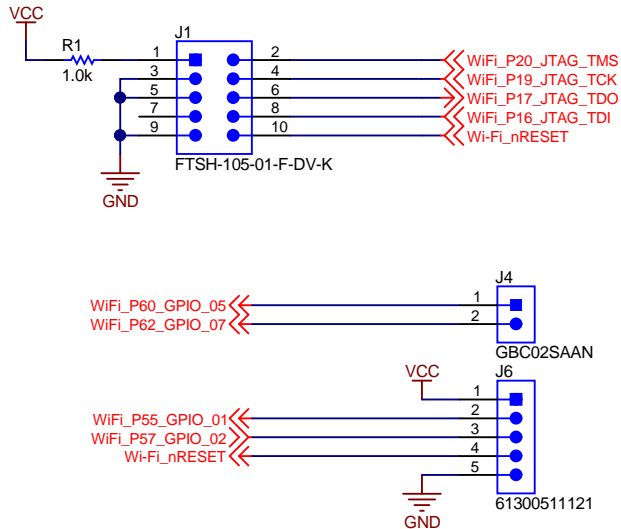


POWER MANAGEMENT

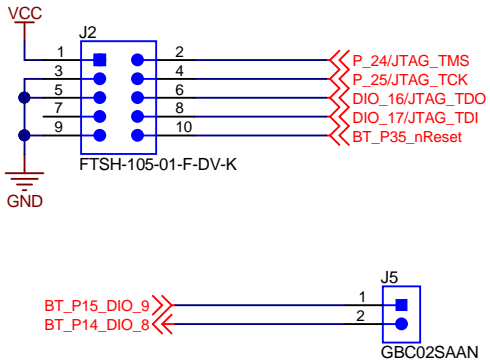


CHECK LAYOUT GUIDE FROM DATASHEET

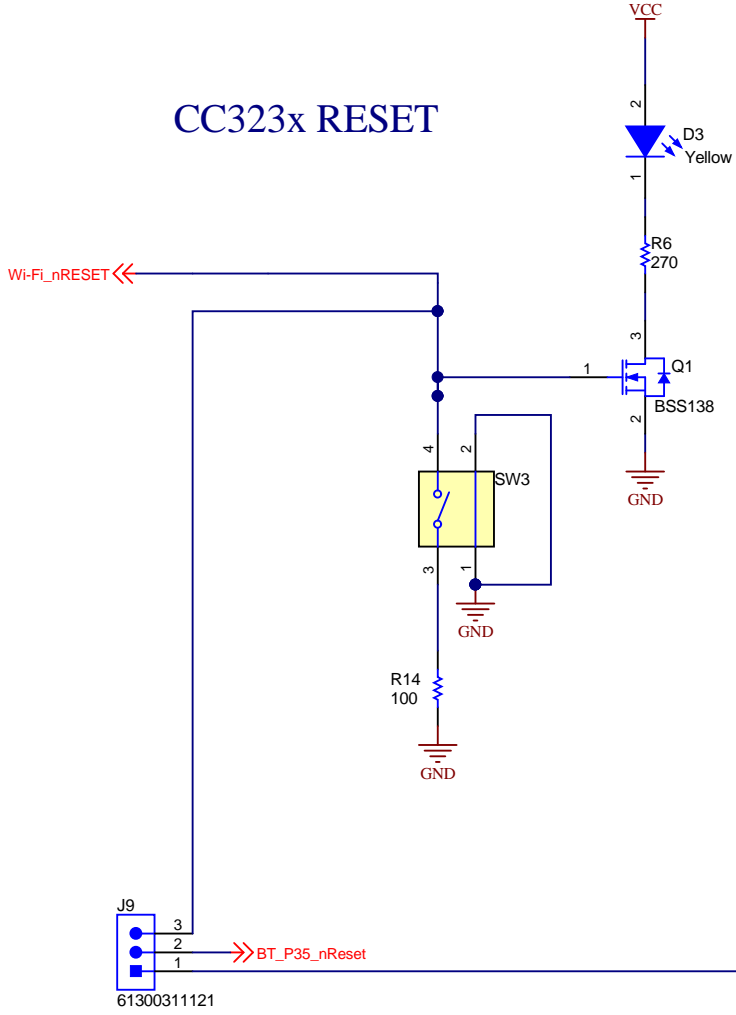
CC323x JTAG INTERFACE



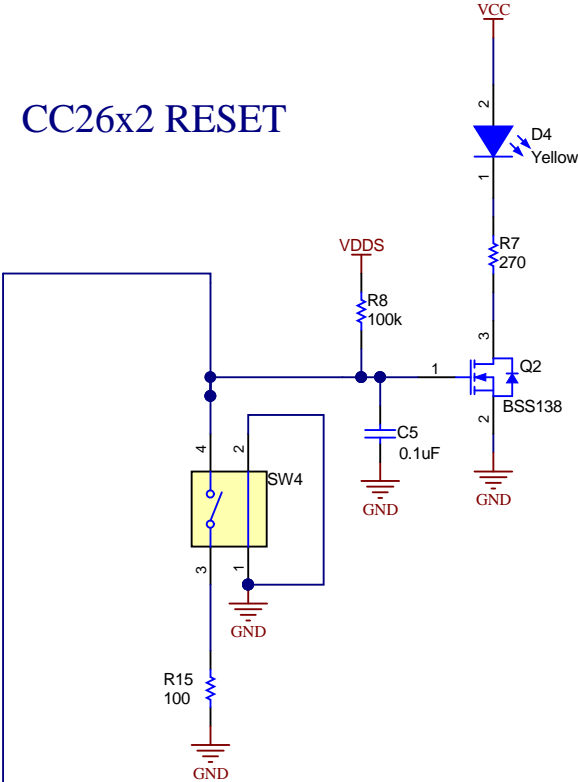
CC26x2 JTAG INTERFACE



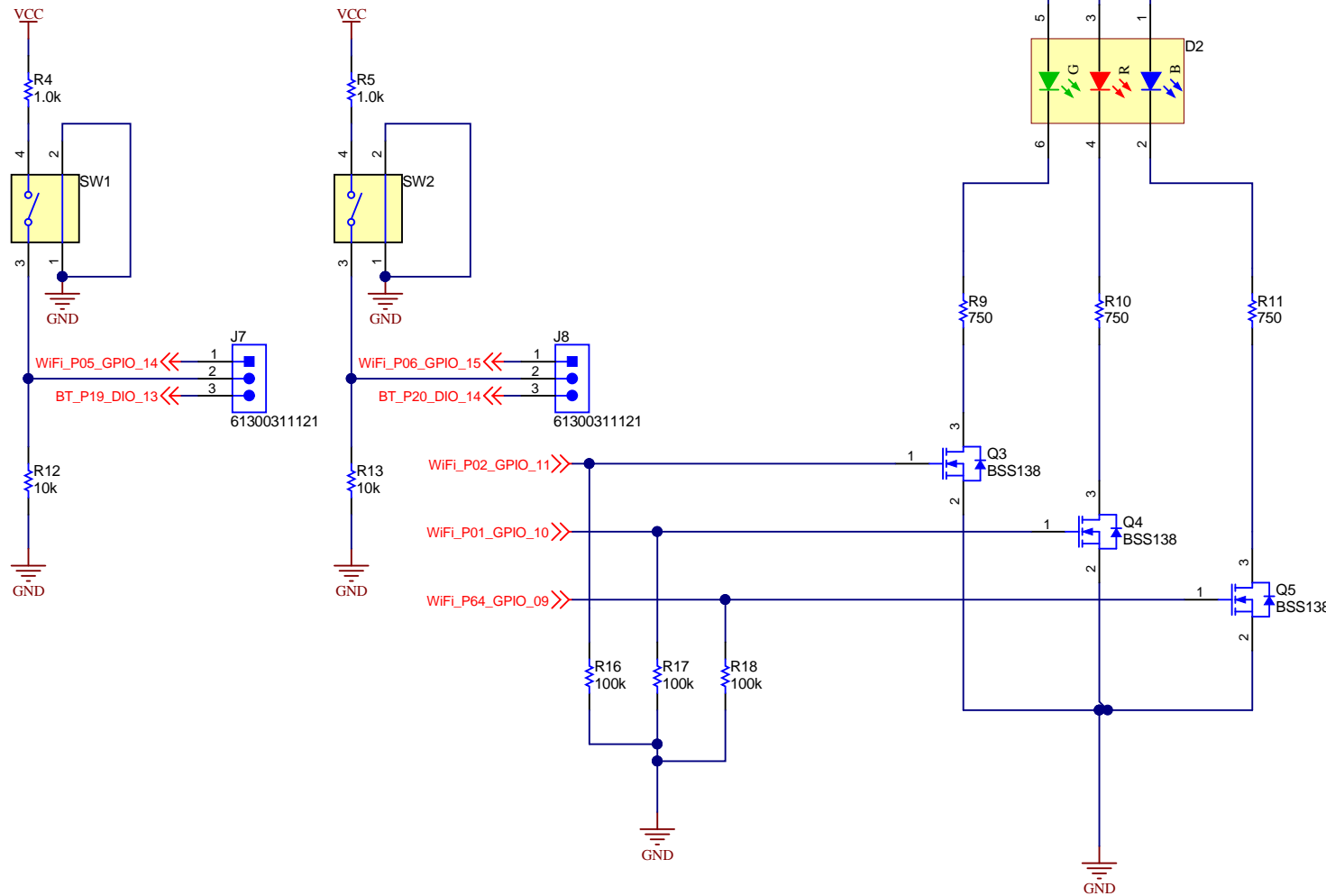
CC323x RESET

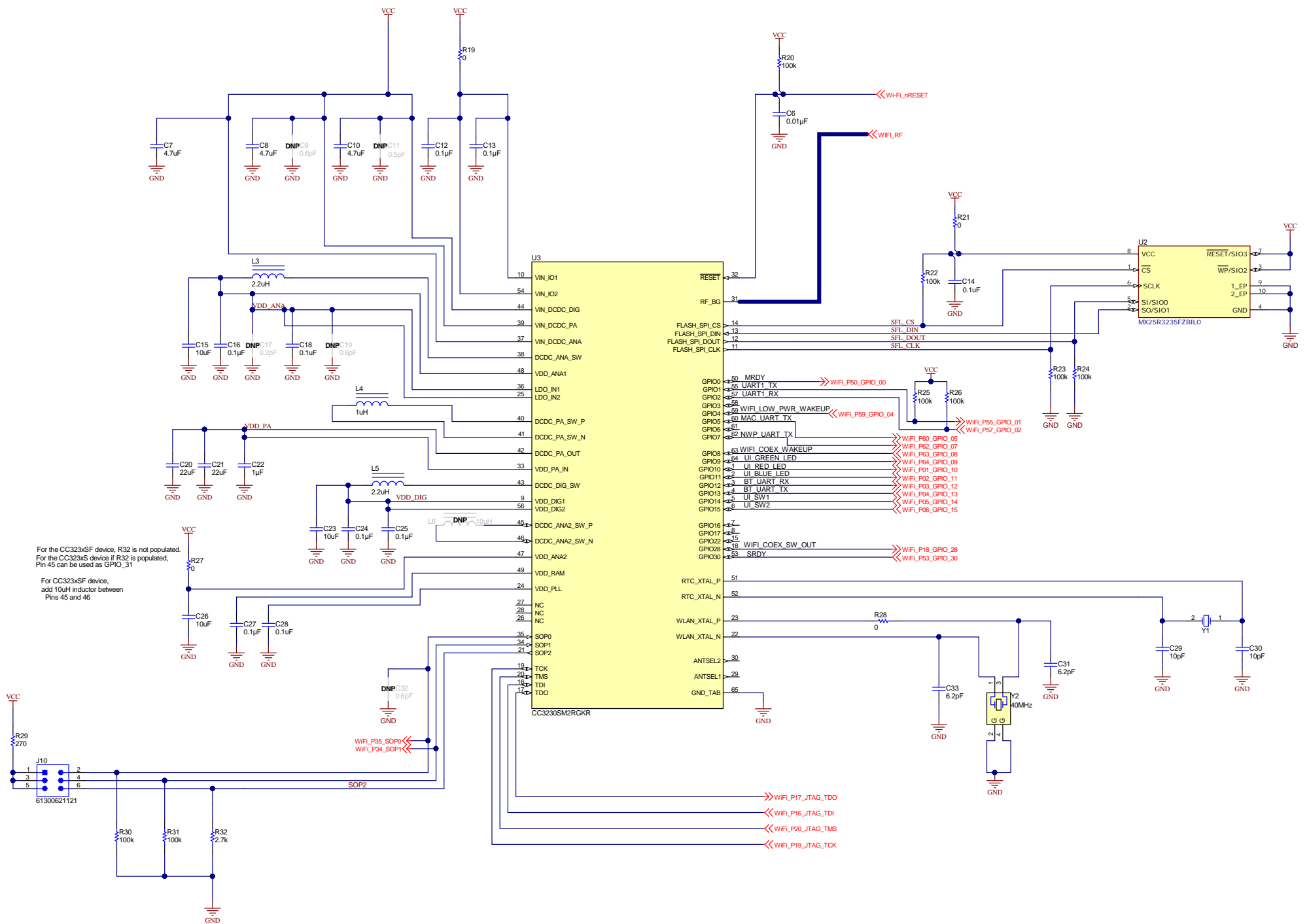


CC26x2 RESET



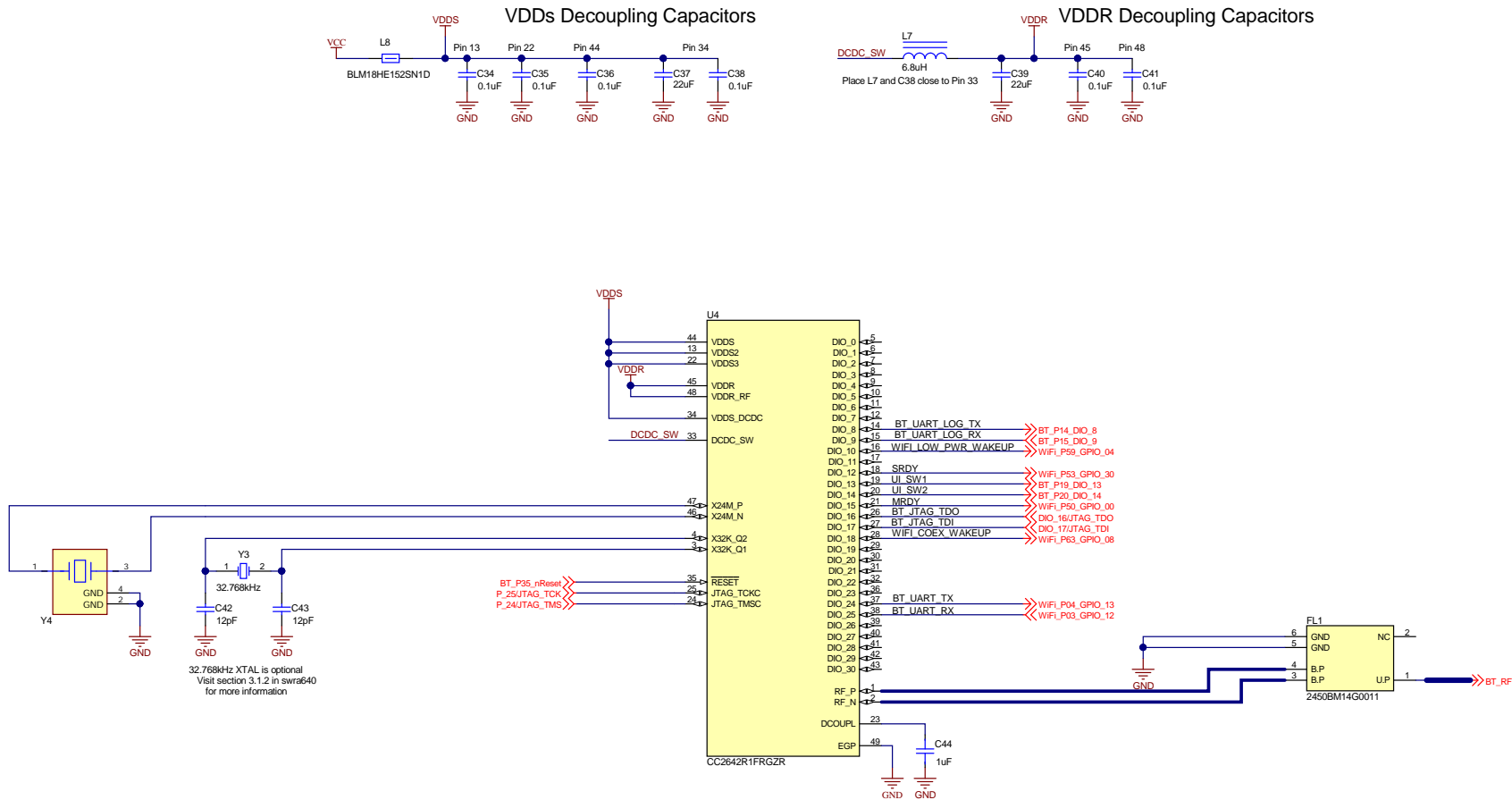
CC323xUSER INTERFACE

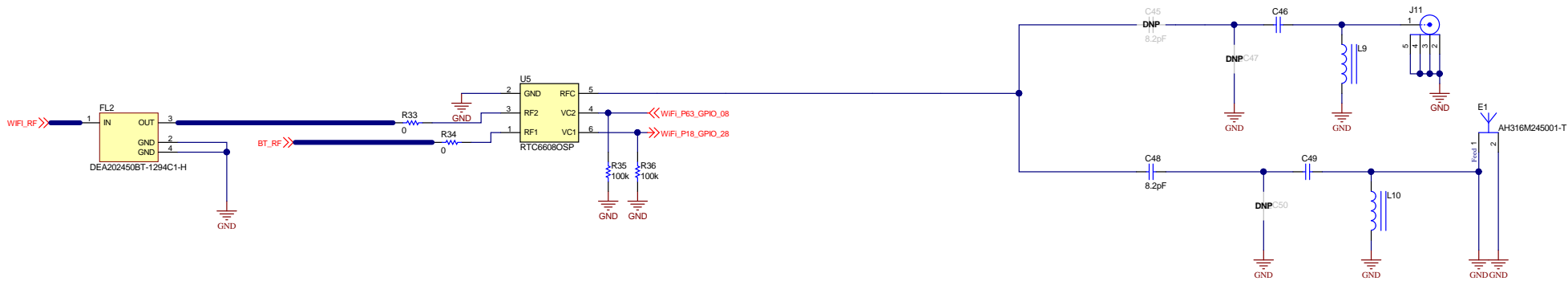




For the CC323xSF device, R32 is not populated.
For the CC323xS device if R32 is populated,
Pin 45 can be used as GPIO_31

For CC323xSF device,
add 10uH inductor between
Pins 45 and 46





Texas Instruments and/or its licensors do not warrant the accuracy or completeness of this specification or any information contained therein. Texas Instruments and/or its licensors do not warrant that this design will meet the specifications, will be suitable for your application or fit for any particular purpose, or will operate in an implementation. Texas Instruments and/or its licensors do not warrant that the design is production worthy. You should completely validate and test your design implementation to confirm the system functionality for your application.

Orderable: N/A	Designed for: Public Release	Mod. Date: 4/9/2021
TID #: N/A	Project Title: CC3230x-CC26x2EM-7ID	
Number: N/A	Rev: A	Sheet Title:
SVN Rev: Version control disabled	Assembly Variant: CC3230S	Sheet: 4 of 5
Drawn By:	File: CC3230x-CC26x2EM-7ID_AntennaRFSection.Sch	Star: C
Engineer: Alexis Rodriguez	Contact: http://www.ti.com/support	



© Texas Instruments 2020

