

ZZ2 ■Install label in silkscreened box after final wash. Text shall be 8 pt font. Text shall be per the Label Table in the PDF schematic.

ZZ4 ■This Assembly Note will show in the PcbDoc and associated outputs

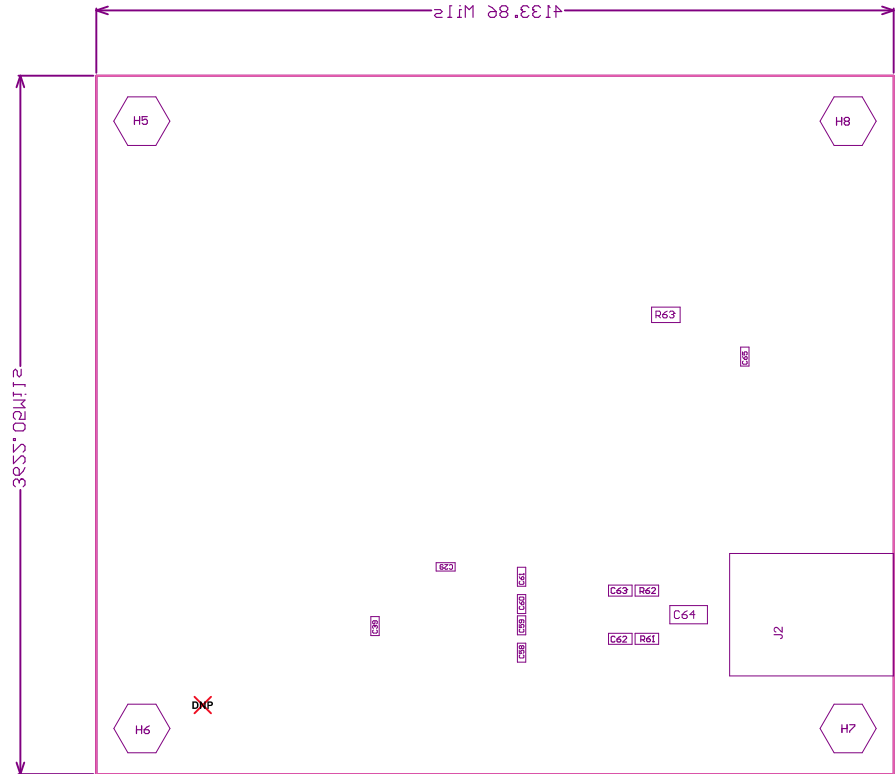
ZZ1 ■This Assembly Note will show in the PcbDoc and associated outputs

ZZ3 ■This Assembly Note will show in the PcbDoc and associated outputs



COMPONENTS MARKED 'DNP' SHOULD NOT BE POPULATED.
ASSEMBLY VARIANT: 001

PCB VIEWED FROM TOP SIDE	BOARD #: TIDA-010046	REV: E1	SVN REV: Not In VersionControl
M5 Assembly Top	TID #: TIDA-010046		
PLOT NAME = Top Assembly Drawing	GENERATED : 9/16/2019 12:45:35 PM	TEXAS INSTRUMENTS	



COMPONENTS MARKED 'DNP' SHOULD NOT BE POPULATED.
ASSEMBLY VARIANT: 001



PCB VIEWED FROM BOTTOM SIDE	BOARD #: TIDA-010046	REV: E1	SUN REV: Not In VersionControl
M6 Assembly Bottom	TID #: TIDA-010046		
PLOT NAME = Bottom Assembly Drawing	GENERATED : 9/16/2019 12:45:38 PM		TEXAS INSTRUMENTS